

# Crockford-Pigeon Mountain WMA

**Walker County (20,657 acres)**

## Legend

### Infrastructure

- Cemetery
- Check Station
- Information Kiosk
- Observation Point
- Trailhead
- Campgrounds

### Roads

- Mobility Impaired Access
- No Vehicular Access
- Open Road
- Seasonal Road

### Trails

- Atwood Trail
- Bear Lake Connector
- Bluebird Gap Connector
- Bluehole Trail
- Chamberlain Trail
- Cove Connector

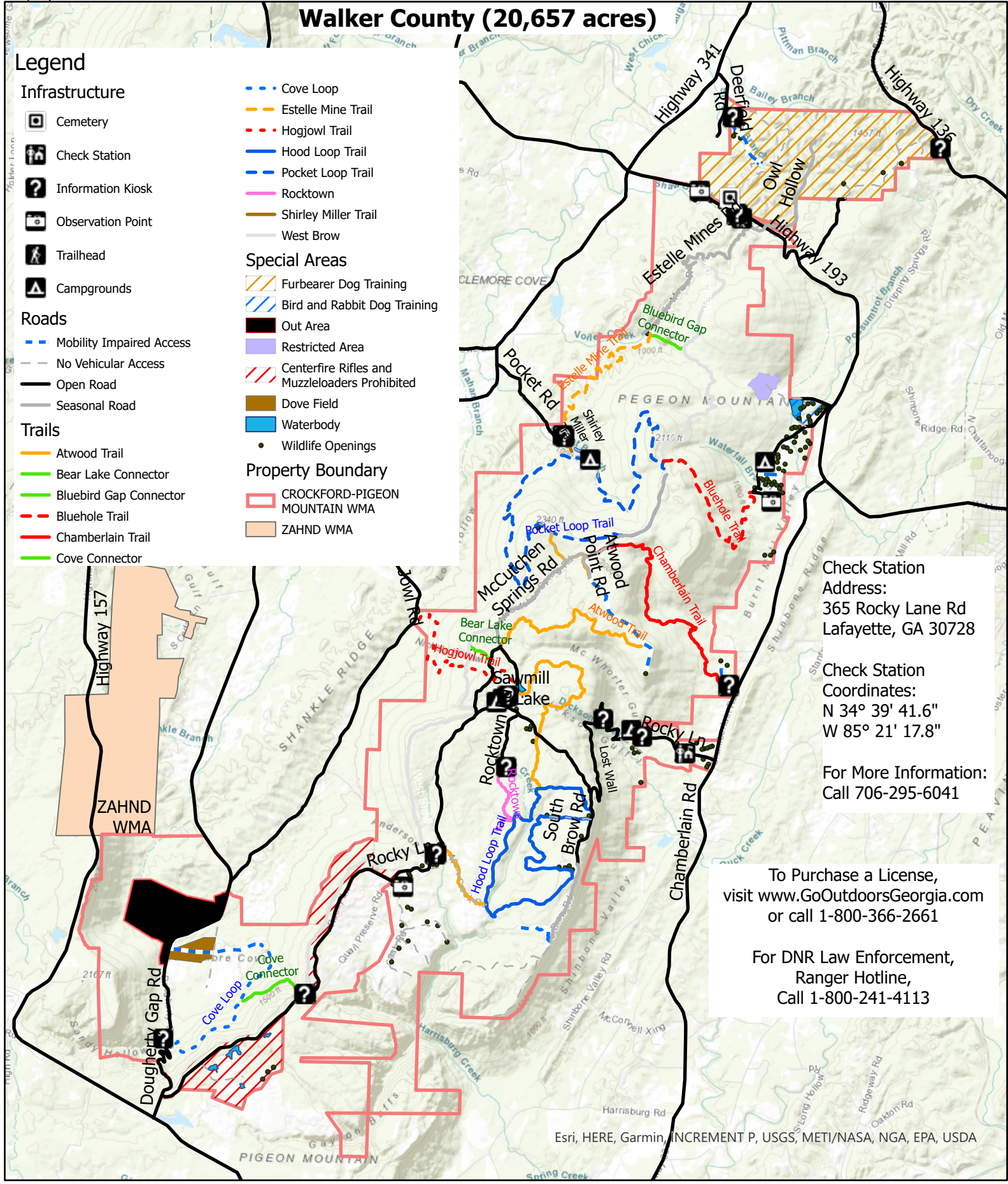
- Cove Loop
- Estelle Mine Trail
- Hogjowl Trail
- Hood Loop Trail
- Pocket Loop Trail
- Rocktown
- Shirley Miller Trail
- West Brow

### Special Areas

- Furbearer Dog Training
- Bird and Rabbit Dog Training
- Out Area
- Restricted Area
- Centerfire Rifles and Muzzleloaders Prohibited
- Dove Field
- Waterbody
- Wildlife Openings

### Property Boundary

- CROCKFORD-PIGEON MOUNTAIN WMA
- ZAHND WMA



Check Station  
Address:  
365 Rocky Lane Rd  
Lafayette, GA 30728

Check Station  
Coordinates:  
N 34° 39' 41.6"  
W 85° 21' 17.8"

For More Information:  
Call 706-295-6041

To Purchase a License,  
visit [www.GoOutdoorsGeorgia.com](http://www.GoOutdoorsGeorgia.com)  
or call 1-800-366-2661

For DNR Law Enforcement,  
Ranger Hotline,  
Call 1-800-241-4113

Esri, HERE, Garmin, INCREMENT P, USGS, METI/NASA, NGA, EPA, USDA

