

Conasauga River Wildlife Management Area



For WMA Information,
Call: 706-295-6041

Legend

- WMA Boundary
- County Boundary
- Parking
- No Vehicular Access Road
- Open Road
- Powerline
- River/Stream

Sign-In Kiosks
available at each
parking area.

Bryant Road North
34.8506353° -84.8366845°

Bryant Road South
34.8454403° -84.8368306°

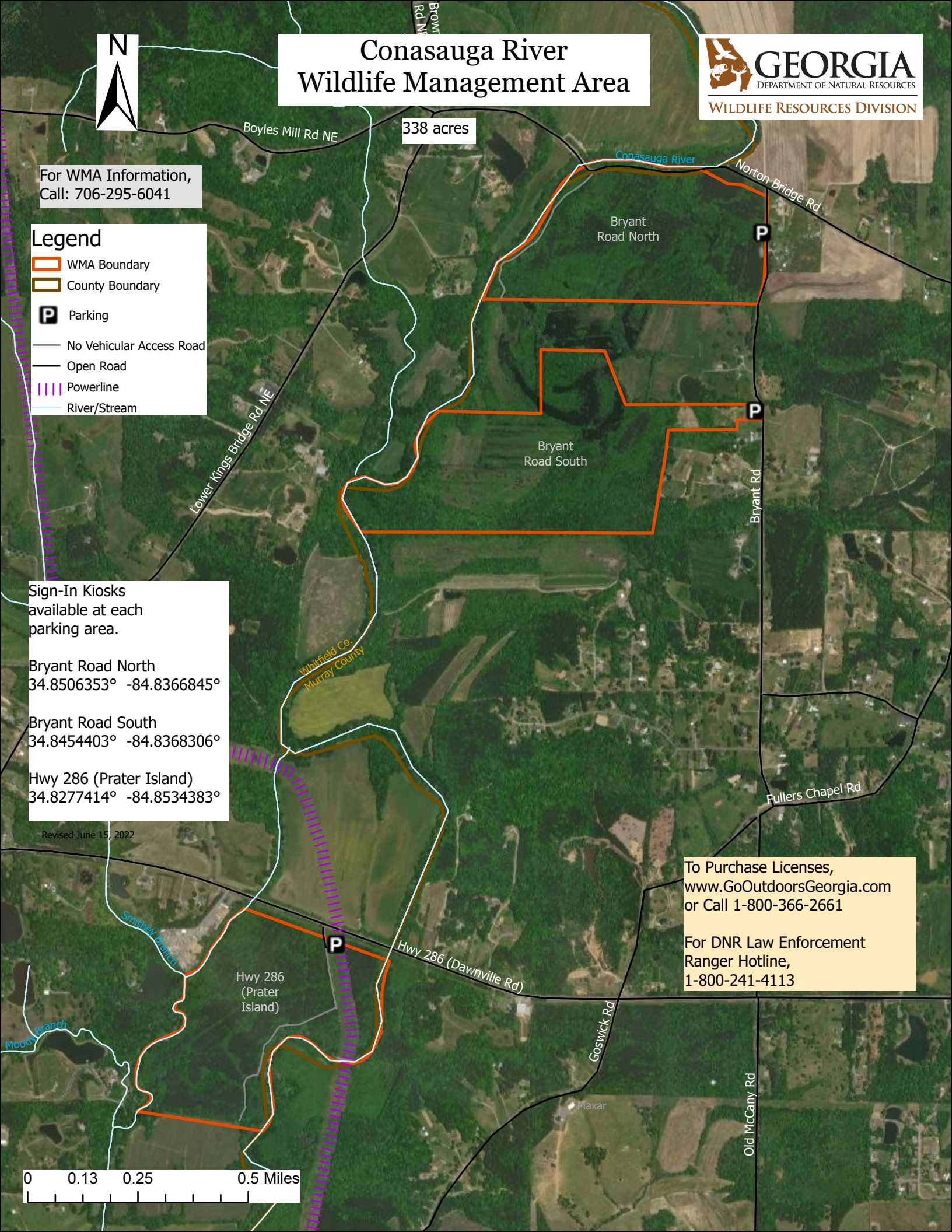
Hwy 286 (Prater Island)
34.8277414° -84.8534383°

Revised June 15, 2022

To Purchase Licenses,
www.GoOutdoorsGeorgia.com
or Call 1-800-366-2661

For DNR Law Enforcement
Ranger Hotline,
1-800-241-4113

0 0.13 0.25 0.5 Miles



Conasauga River Wildlife Management Area



For WMA Information,
Call: 706-295-6041

Legend

- WMA Boundary
- County Boundary
- Parking
- No Vehicular Access Road
- Open Road
- Powerline
- River/Stream

Sign-In Kiosks
available at each
parking area.

Bryant Road North
34.8506353° -84.8366845°

Bryant Road South
34.8454403° -84.8368306°

Hwy 286 (Prater Island)
34.8277414° -84.8534383°

Revised June 15, 2022

To Purchase Licenses,
www.GoOutdoorsGeorgia.com
or Call 1-800-366-2661

For DNR Law Enforcement
Ranger Hotline,
1-800-241-4113

0 0.13 0.25 0.5 Miles

USGS The National Map: National Boundaries Dataset, 3DEP Elevation Program, Geographic Names Information System, National Hydrography Dataset, National Land Cover Database, National Structures Dataset, and National Transportation Dataset; USGS Global Ecosystems; U.S. Census Bureau TIGER/Line data; USFS Road Data; Natural Earth Data; U.S. Department of State Humanitarian Information Unit; and NOAA National Centers for Environmental Information, U.S. Coastal Relief Model. Data refreshed August, 2021.