



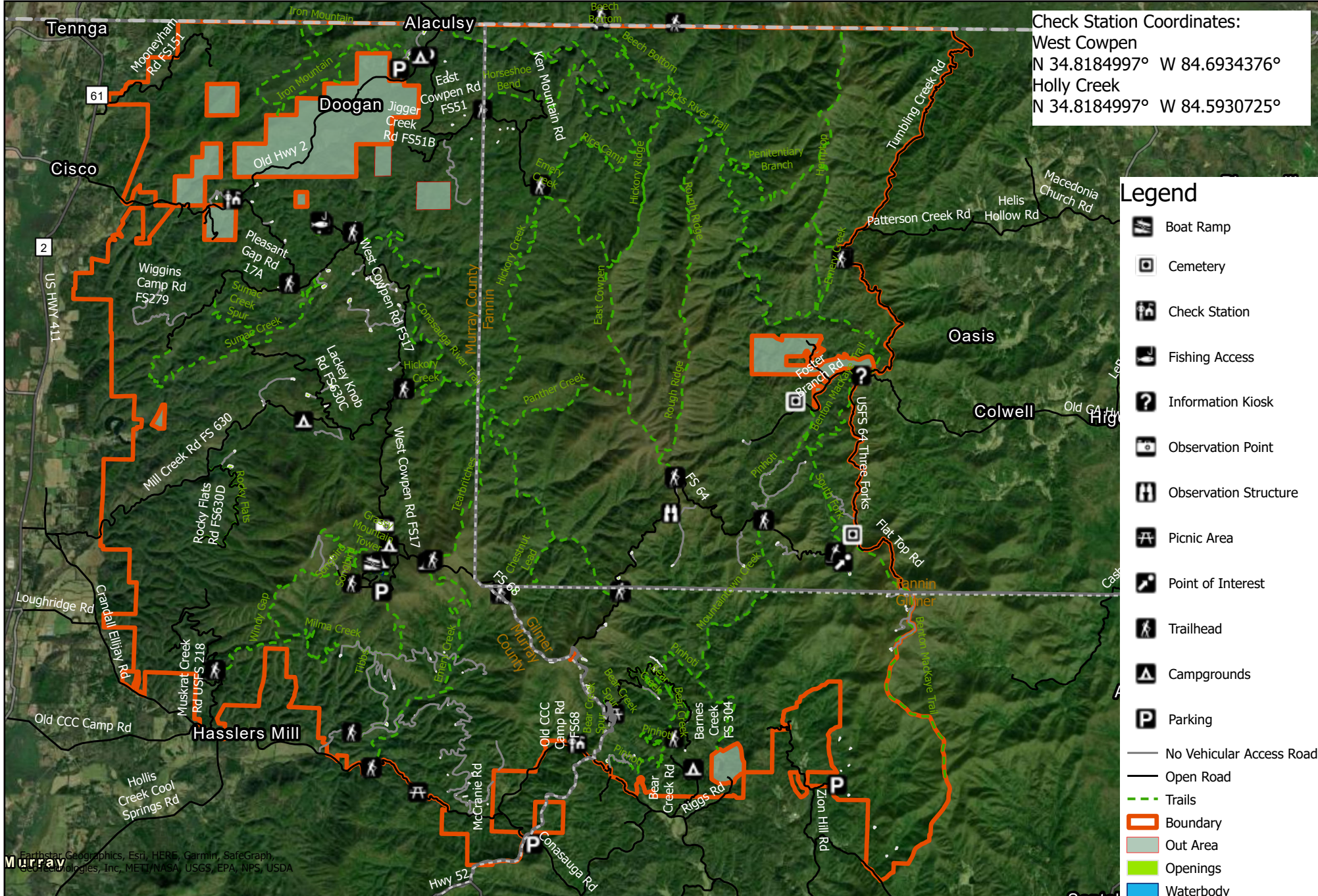
For More Information,
Contact: 706-295-6041

Cohutta Wildlife Management Area

Fannin, Gilmer, and Murray Counties (96,583 acres)



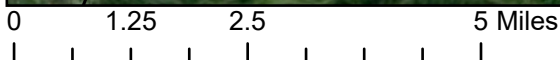
Check Station Coordinates:
West Cowpen
N 34.8184997° W 84.6934376°
Holly Creek
N 34.8184997° W 84.5930725°



Legend

- Boat Ramp
- Cemetery
- Check Station
- Fishing Access
- Information Kiosk
- Observation Point
- Observation Structure
- Picnic Area
- Point of Interest
- Trailhead
- Campgrounds
- Parking
- No Vehicular Access Road
- Open Road
- Trails
- Boundary
- Out Area
- Openings
- Waterbody

Earthstar Geographics, Esri, HERE, Garmin, SafeGraph, GeoTechnologies, Inc, METI/MASA, USGS, EPA, NPS, USDA



Prepared June 14, 2022



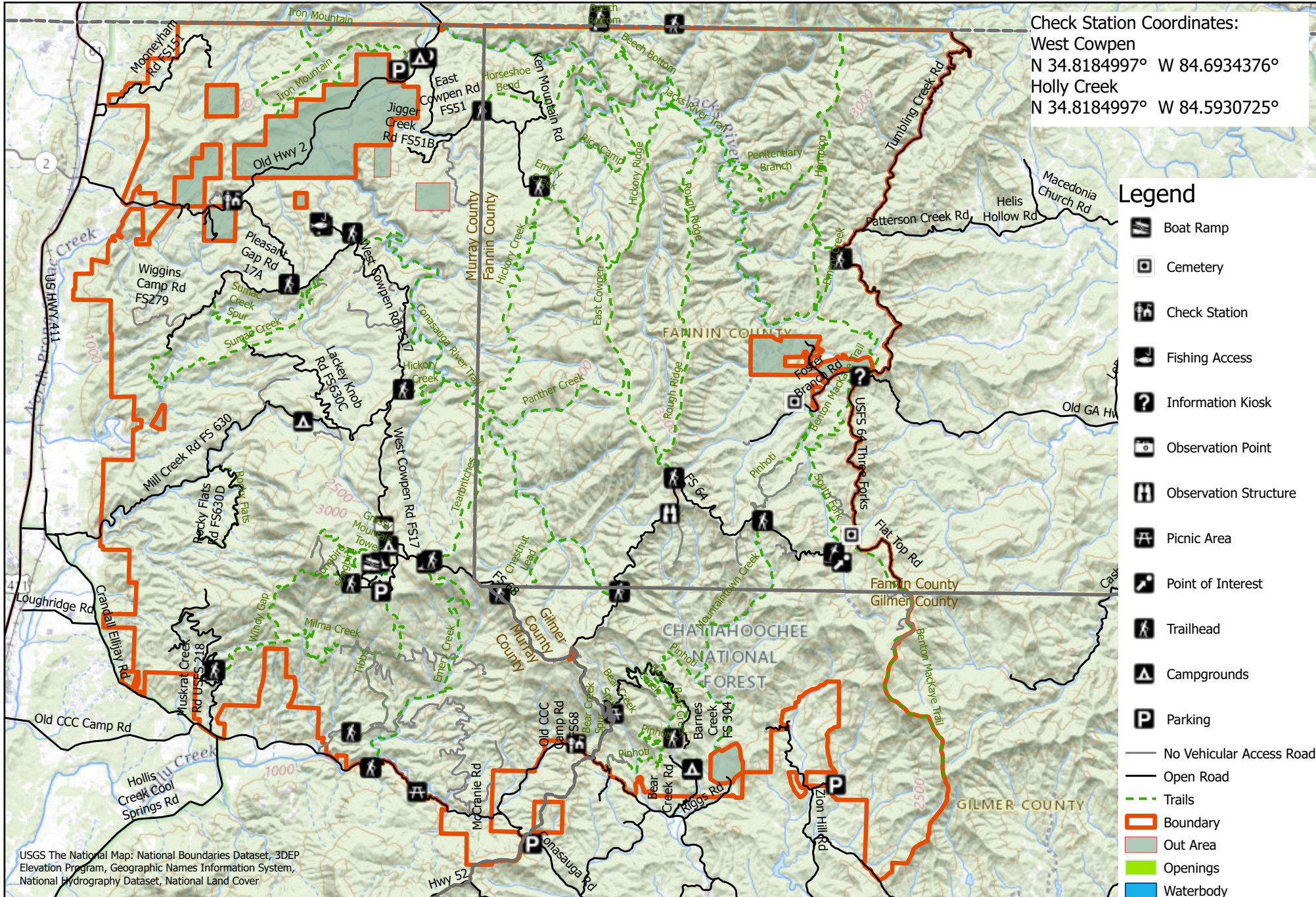
For More Information,
Contact: 706-295-6041

Cohutta Wildlife Management Area

Fannin, Gilmer, and Murray Counties (96,583 acres)

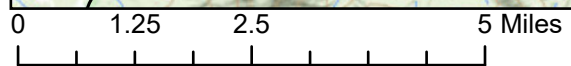


Check Station Coordinates:
West Cowpen
N 34.8184997° W 84.6934376°
Holly Creek
N 34.8184997° W 84.5930725°



- ### Legend
- Boat Ramp
 - Cemetery
 - Check Station
 - Fishing Access
 - Information Kiosk
 - Observation Point
 - Observation Structure
 - Picnic Area
 - Point of Interest
 - Trailhead
 - Campgrounds
 - Parking
 - No Vehicular Access Road
 - Open Road
 - Trails
 - Boundary
 - Out Area
 - Openings
 - Waterbody

USGS The National Map: National Boundaries Dataset, 3DEP Elevation Program, Geographic Names Information System, National Hydrography Dataset, National Land Cover



Prepared June 14, 2022