

# Carter's Lake Wildlife Management Area

3,300 acres (Gilmer & Murray Counties)



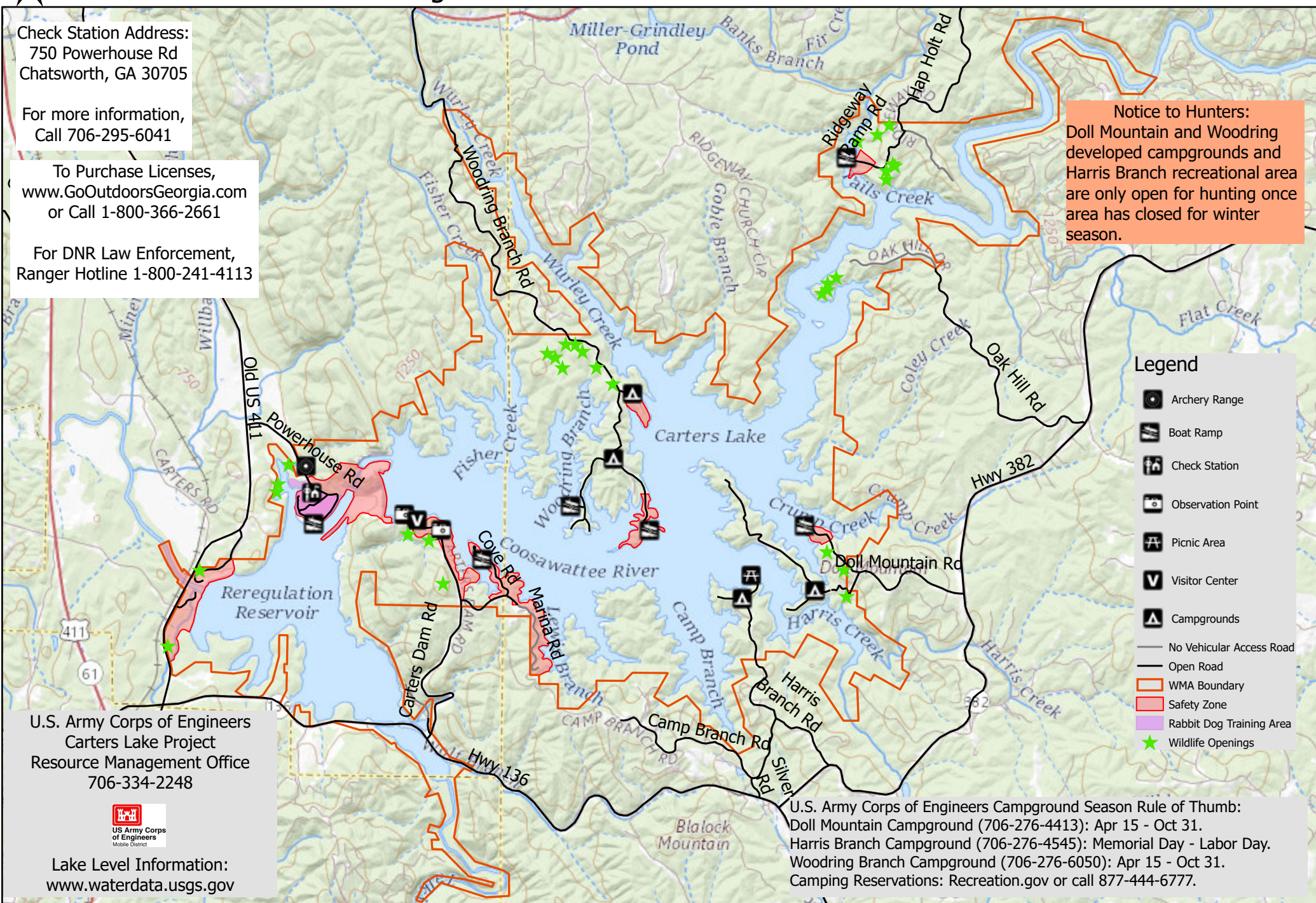
Check Station Address:  
750 Powerhouse Rd  
Chatsworth, GA 30705

For more information,  
Call 706-295-6041

To Purchase Licenses,  
[www.GoOutdoorsGeorgia.com](http://www.GoOutdoorsGeorgia.com)  
or Call 1-800-366-2661

For DNR Law Enforcement,  
Ranger Hotline 1-800-241-4113

**Notice to Hunters:**  
Doll Mountain and Woodring developed campgrounds and Harris Branch recreational area are only open for hunting once area has closed for winter season.



- ### Legend
- Archery Range
  - Boat Ramp
  - Check Station
  - Observation Point
  - Picnic Area
  - Visitor Center
  - Campgrounds
  - No Vehicular Access Road
  - Open Road
  - WMA Boundary
  - Safety Zone
  - Rabbit Dog Training Area
  - Wildlife Openings

U.S. Army Corps of Engineers  
Carter's Lake Project  
Resource Management Office  
706-334-2248



Lake Level Information:  
[www.waterdata.usgs.gov](http://www.waterdata.usgs.gov)

U.S. Army Corps of Engineers Campground Season Rule of Thumb:  
Doll Mountain Campground (706-276-4413): Apr 15 - Oct 31.  
Harris Branch Campground (706-276-4545): Memorial Day - Labor Day.  
Woodring Branch Campground (706-276-6050): Apr 15 - Oct 31.  
Camping Reservations: [Recreation.gov](http://Recreation.gov) or call 877-444-6777.

