



Allatoona Wildlife Management Area

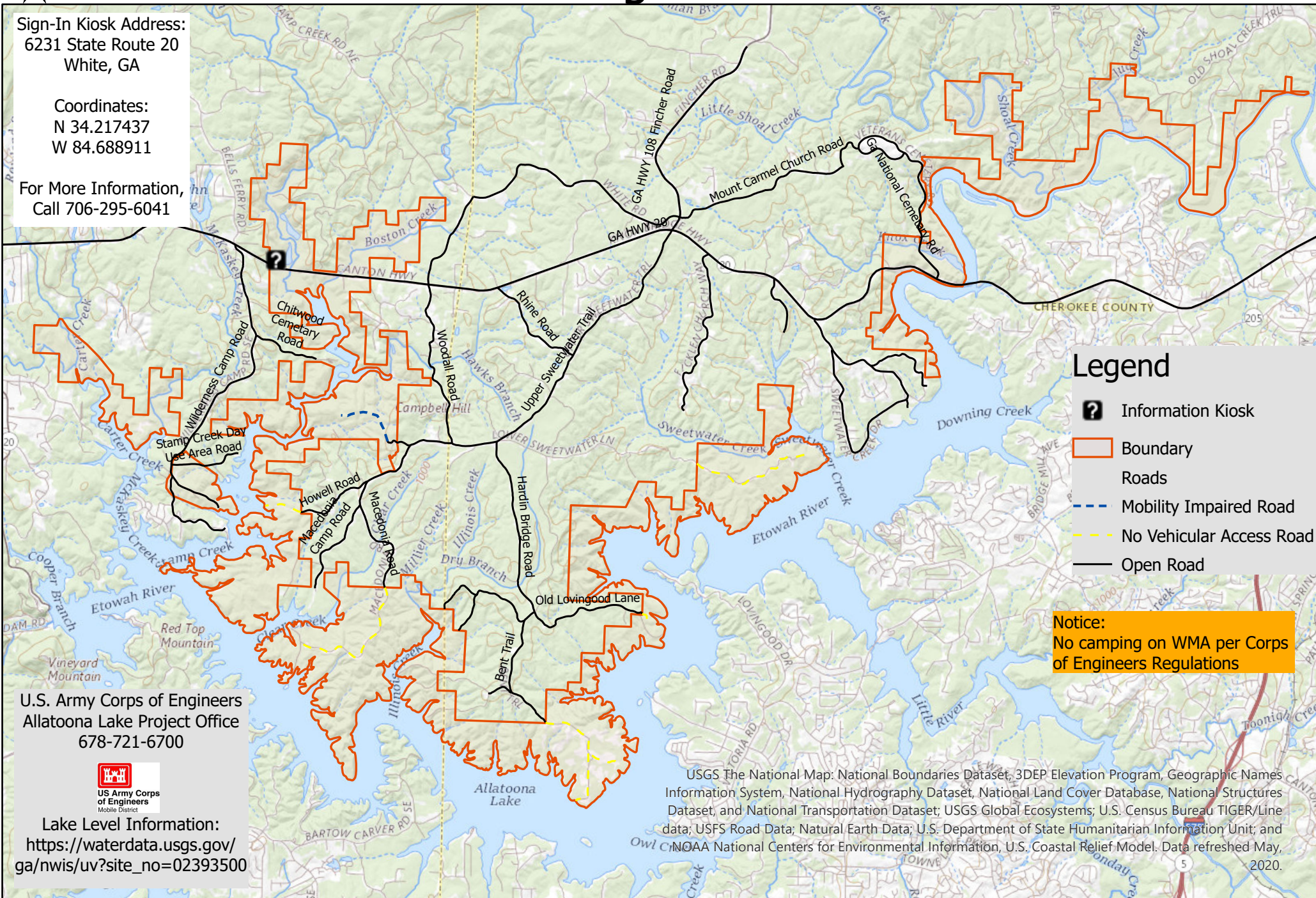
Bartow and Cherokee Counties
(6,818 acres)



Sign-In Kiosk Address:
6231 State Route 20
White, GA

Coordinates:
N 34.217437
W 84.688911

For More Information,
Call 706-295-6041



Legend

- Information Kiosk
- Boundary
- Roads
- Mobility Impaired Road
- No Vehicular Access Road
- Open Road

Notice:
No camping on WMA per Corps
of Engineers Regulations

U.S. Army Corps of Engineers
Allatoona Lake Project Office
678-721-6700



Lake Level Information:
https://waterdata.usgs.gov/ga/nwis/uv?site_no=02393500

USGS The National Map: National Boundaries Dataset, 3DEP Elevation Program, Geographic Names Information System, National Hydrography Dataset, National Land Cover Database, National Structures Dataset, and National Transportation Dataset; USGS Global Ecosystems; U.S. Census Bureau TIGER/Line data; USFS Road Data; Natural Earth Data; U.S. Department of State Humanitarian Information Unit; and NOAA National Centers for Environmental Information, U.S. Coastal Relief Model. Data refreshed May, 2020.

