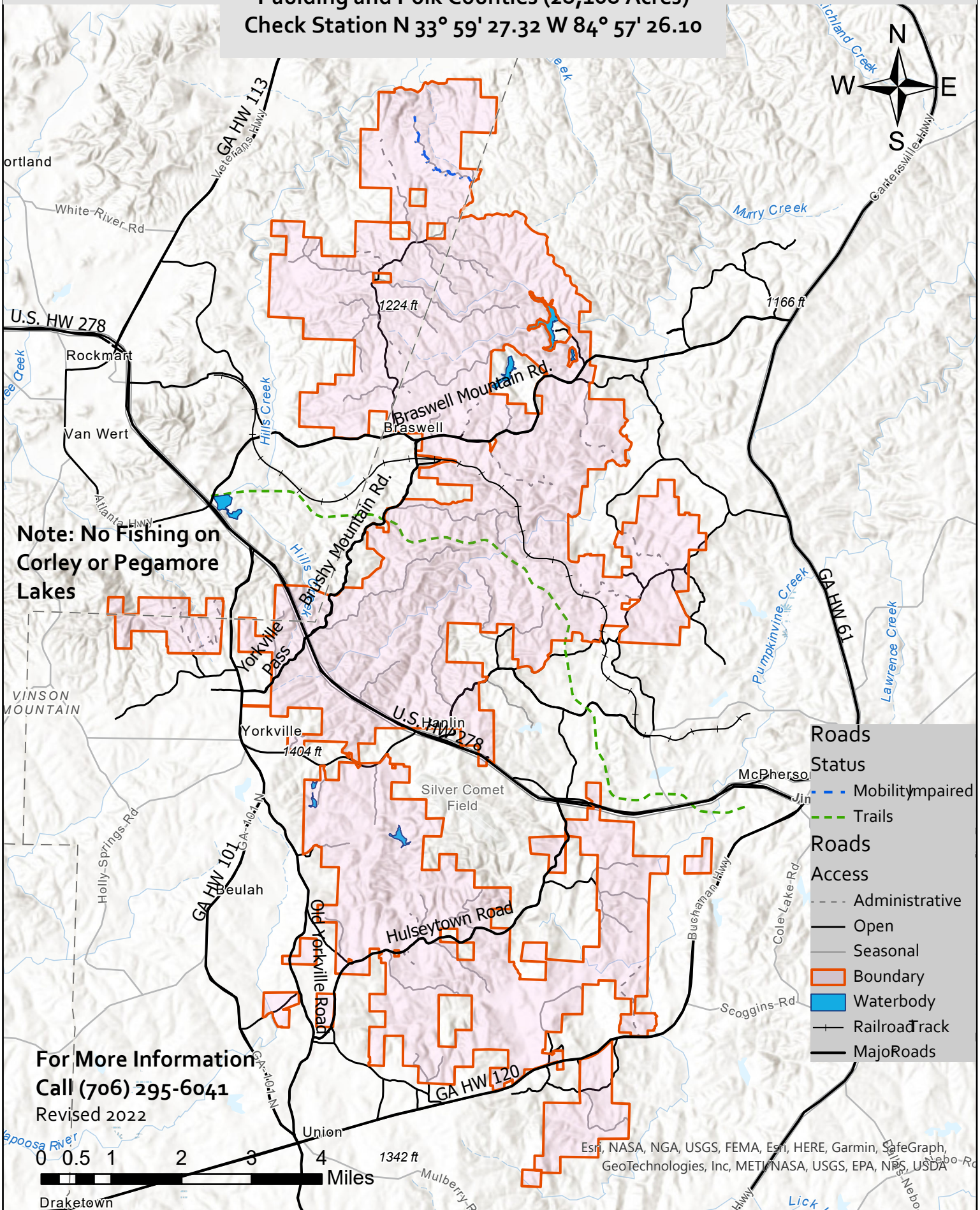


Paulding Forest Wildlife Management Area

Paulding and Polk Counties (28,108 Acres)
 Check Station N 33° 59' 27.32" W 84° 57' 26.10"



Note: No Fishing on Corley or Pegamore Lakes

**For More Information
 Call (706) 295-6041**
 Revised 2022



- Roads Status**
- Mobilityimpaired
- Trails
- Roads Access**
- Administrative
- Open
- Seasonal
- Boundary
- Waterbody
- Railroad track
- Major Roads

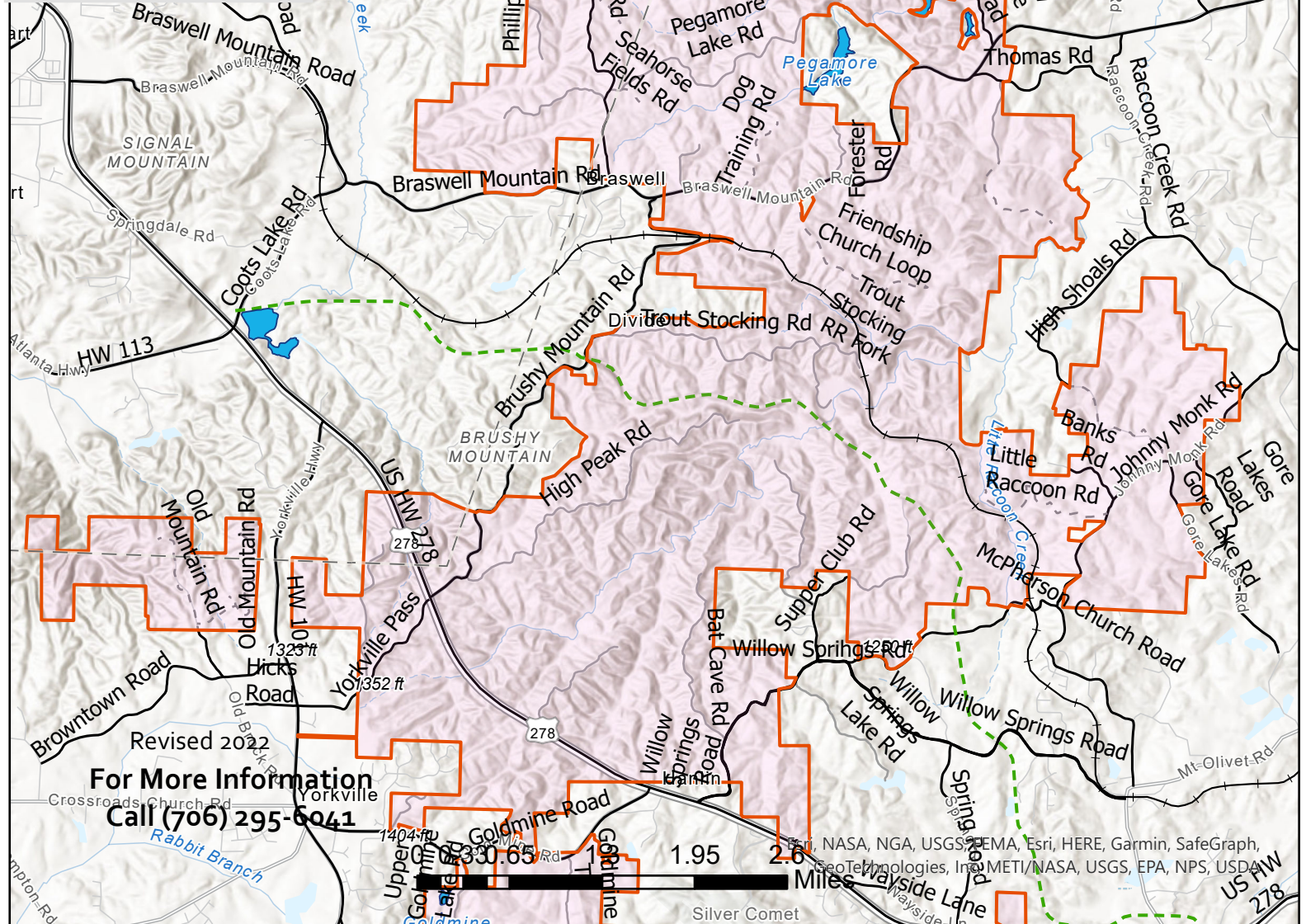
Esri, NASA, NGA, USGS, FEMA, Esri, HERE, Garmin, SafeGraph, GeoTechnologies, Inc, METI, NASA, USGS, EPA, NPS, USDA

Paulding Forest North Wildlife Management Area



**Note: No Fishing, on
Corley or Pegamore
Lakes**

- Roads
- Status
- - Mobility Impaired
- - Trails
- Roads Access
- - Administrative
- - Open
- - Seasonal
- Boundary
- Waterbody
- Railroad Track



Revised 2022
**For More Information
Call (706) 295-6041**

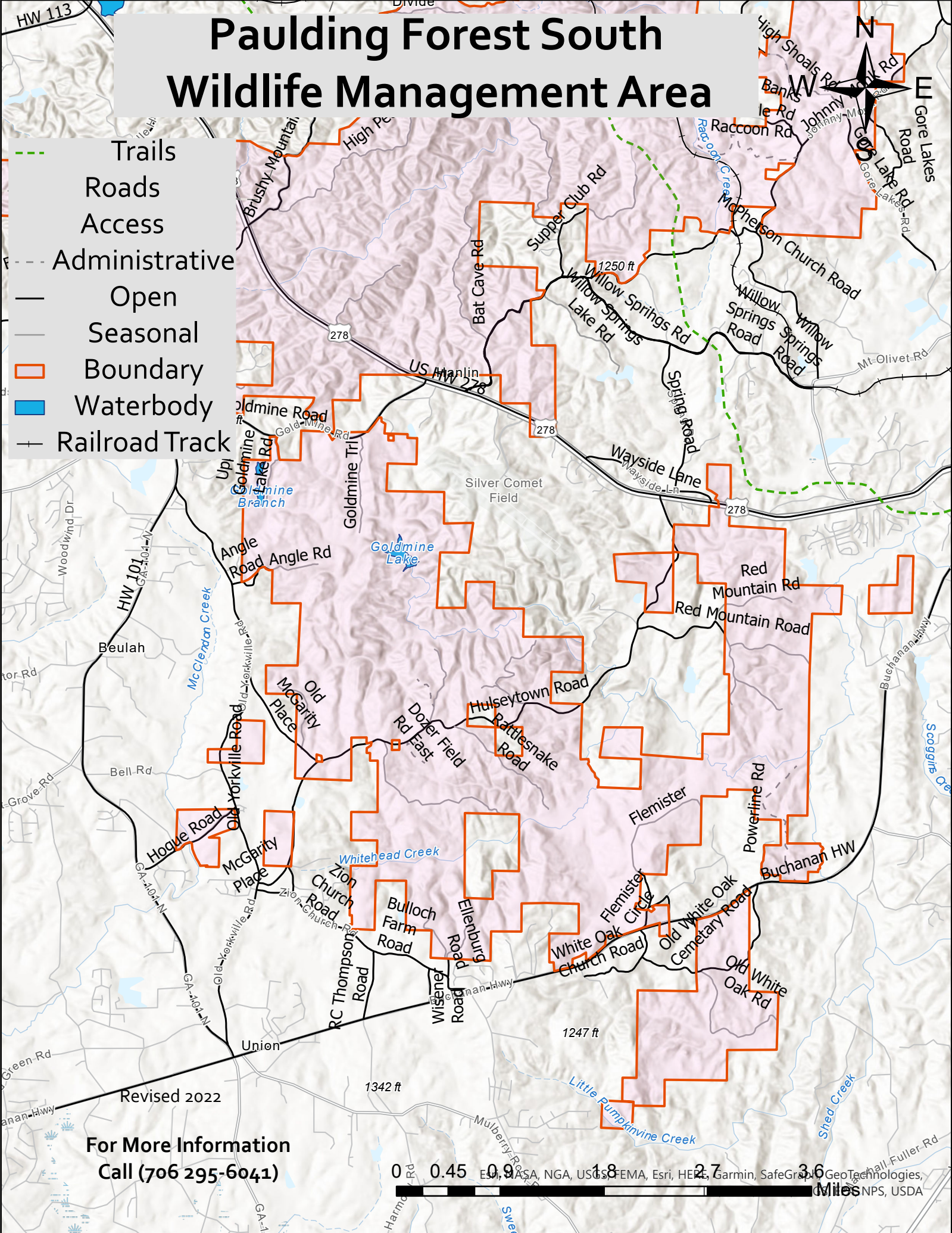
1.95 2.6 Miles
Silver Comet
US HW 278

© 2022, NASA, NGA, USGS, FEMA, Esri, HERE, Garmin, SafeGraph, GeoTechnologies, Inc, METI/NASA, USGS, EPA, NPS, USDA

Paulding Forest South Wildlife Management Area

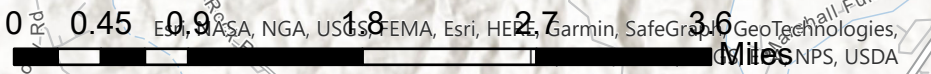


- - - Trails
- Roads
- Access
- - - Administrative
- Open
- Seasonal
- Boundary
- Waterbody
- + Railroad Track



Revised 2022

**For More Information
Call (706 295-6041)**



ESRI, NASA, NGA, USGS, FEMA, Esri, HERE, Garmin, SafeGraph, GeoTechnologies, NPS, USDA