



# Sprewell Bluff Wildlife Management Area

To Purchase Licenses,  
[www.GoOutdoorsGeorgia.com](http://www.GoOutdoorsGeorgia.com)  
or Call 1-800-366-2661

For DNR Law Enforcement,  
Ranger Hotline 1-800-241-4113

Meriwether, Talbot, Upson Counties

For WMA Information,  
Call 706-295-6041

West Track (5,304 acres)

Coordinates:  
N 32.8725646° W 84.5101704°

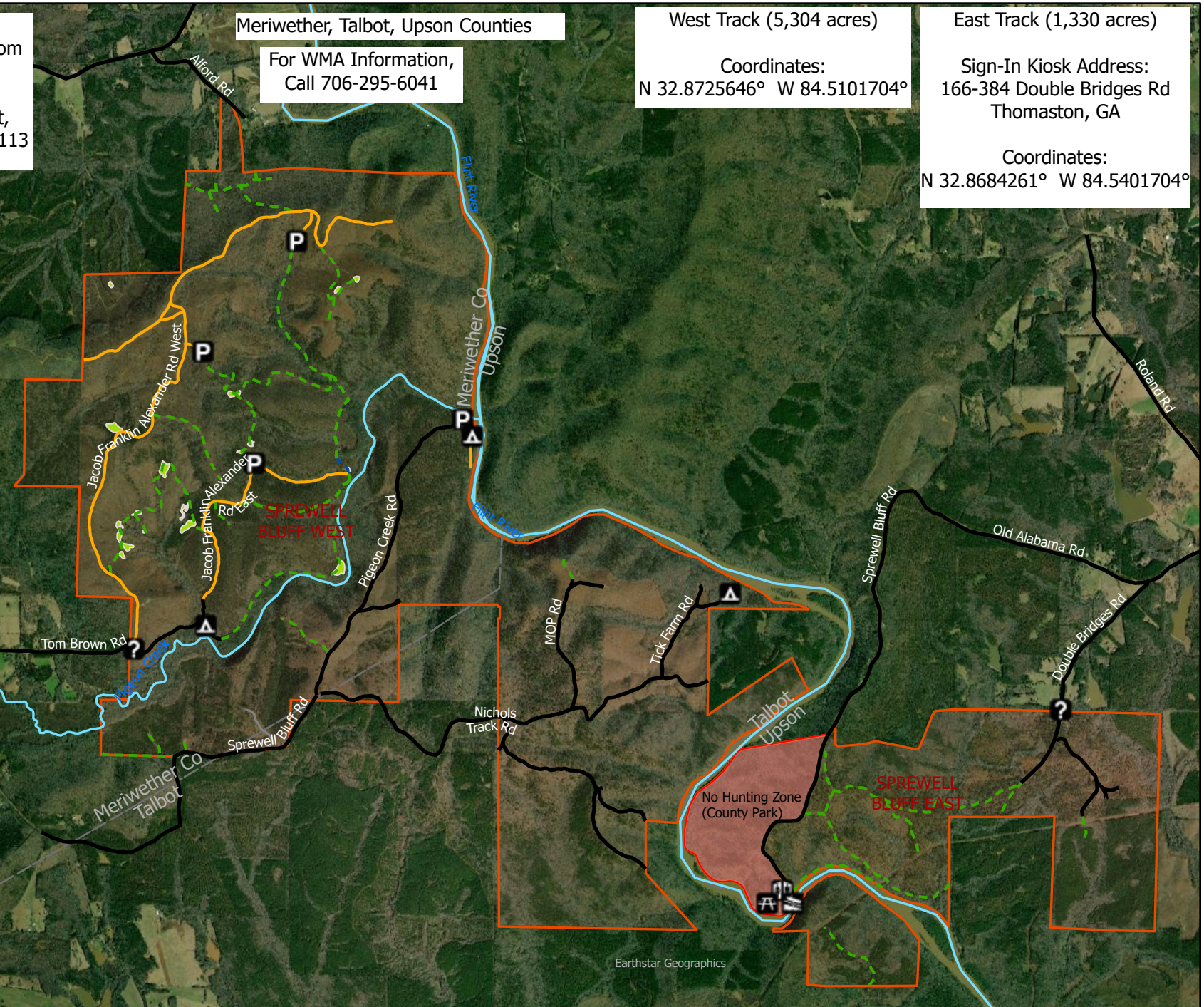
East Track (1,330 acres)

Sign-In Kiosk Address:  
166-384 Double Bridges Rd  
Thomaston, GA

Coordinates:  
N 32.8684261° W 84.5401704°

### Legend

- Bathroom
- Boat Ramp
- Information Kiosk
- Picnic Area
- Campgrounds
- Parking
- Open Road
- Seasonal Road
- Mobility Impaired Road
- No Vehicular Access Road
- River/Stream
- No Hunting Zone
- Trails
- Counties
- WMA Boundary
- Openings



Earthstar Geographics

