



Treat Mountain WMA

~7,259 acres Haralson and Polk Counties

Notice:

Deer & bear harvested during quota hunts
must be checked out at J.L. Lester WMA.
Hunter sign-in available at J.L. Lester WMA

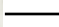
Legend

WMA Boundary

 Treat Mountain

Roads

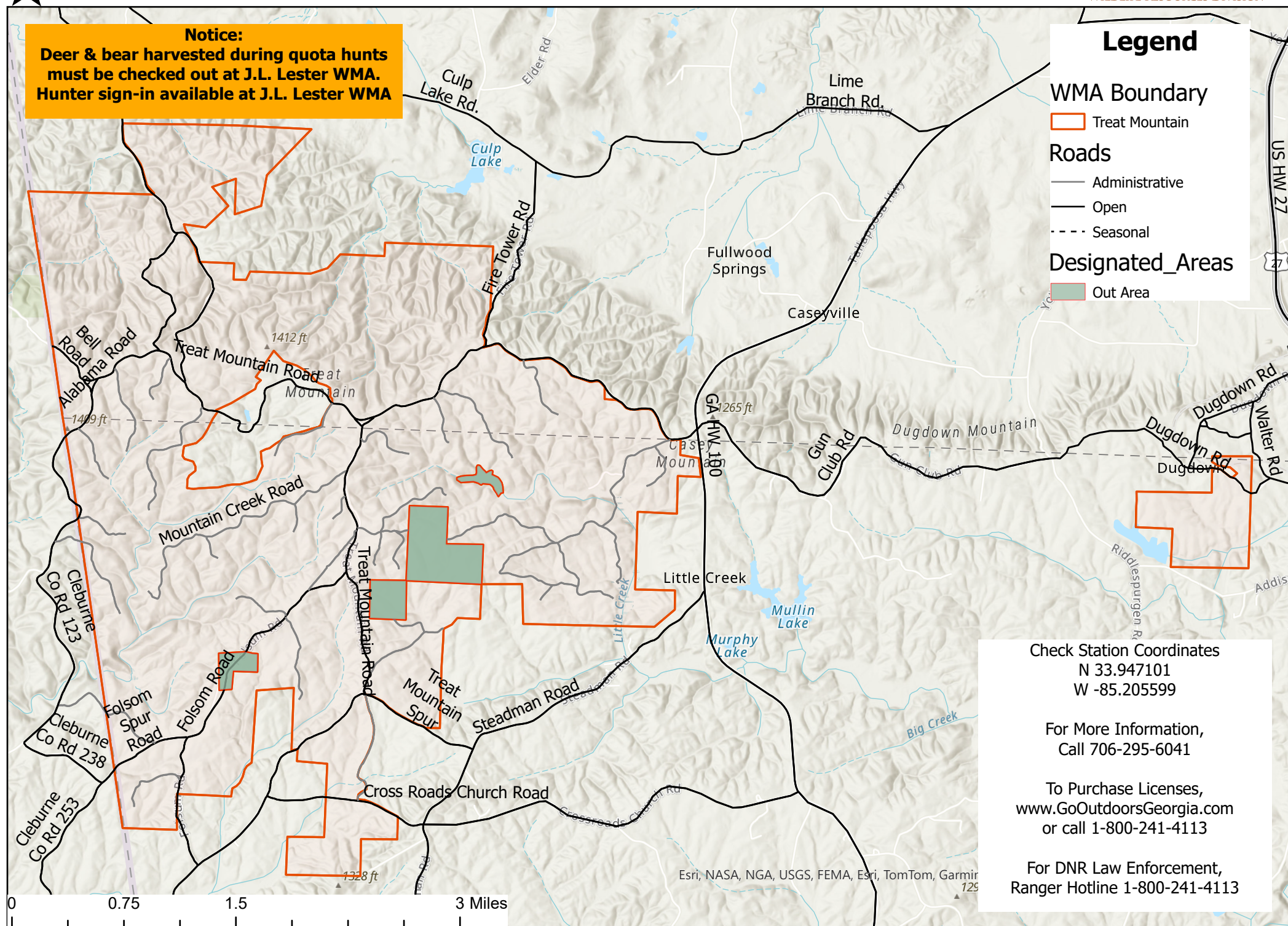
 Administrative

 Open

 Seasonal

Designated_Areas

 Out Area



Check Station Coordinates

N 33.947101

W -85.205599

For More Information,
Call 706-295-6041

To Purchase Licenses,
www.GoOutdoorsGeorgia.com
or call 1-800-241-4113

For DNR Law Enforcement,
Ranger Hotline 1-800-241-4113

Esri, NASA, NGA, USGS, FEMA, Esri, TomTom, Garmin