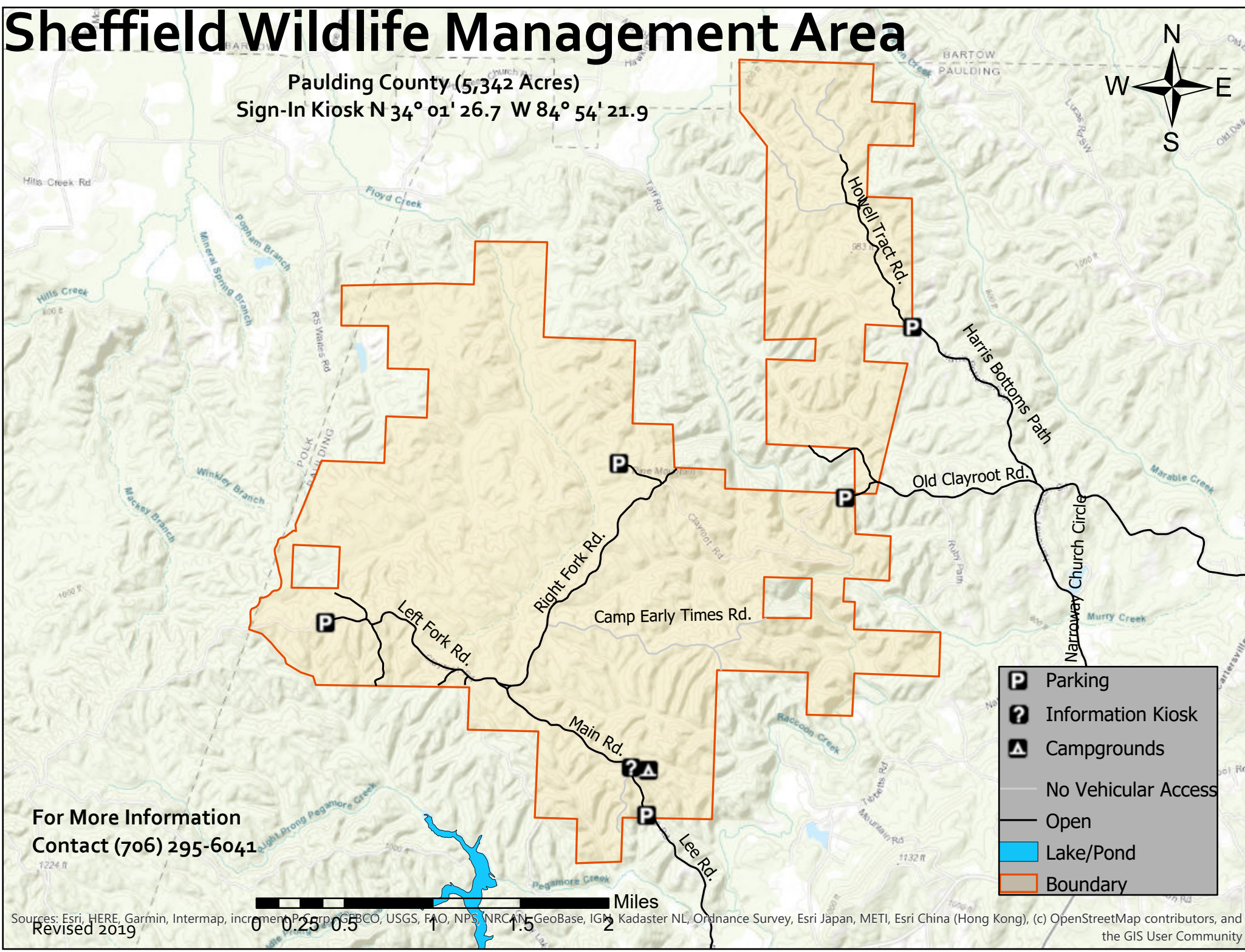
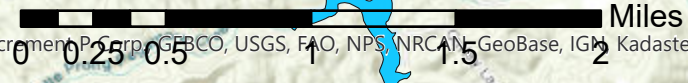


Sheffield Wildlife Management Area

Paulding County (5,342 Acres)
Sign-In Kiosk N 34° 01' 26.7 W 84° 54' 21.9



For More Information
Contact (706) 295-6041



Sources: Esri, HERE, Garmin, Intermap, increment P Corp., GEBCO, USGS, FAO, NPS, NRCAN, GeoBase, IGN, Kadaster NL, Ordnance Survey, Esri Japan, METI, Esri China (Hong Kong), (c) OpenStreetMap contributors, and the GIS User Community
Revised 2019