



# Clybel Wildlife Management Area Marben Public Fishing Area

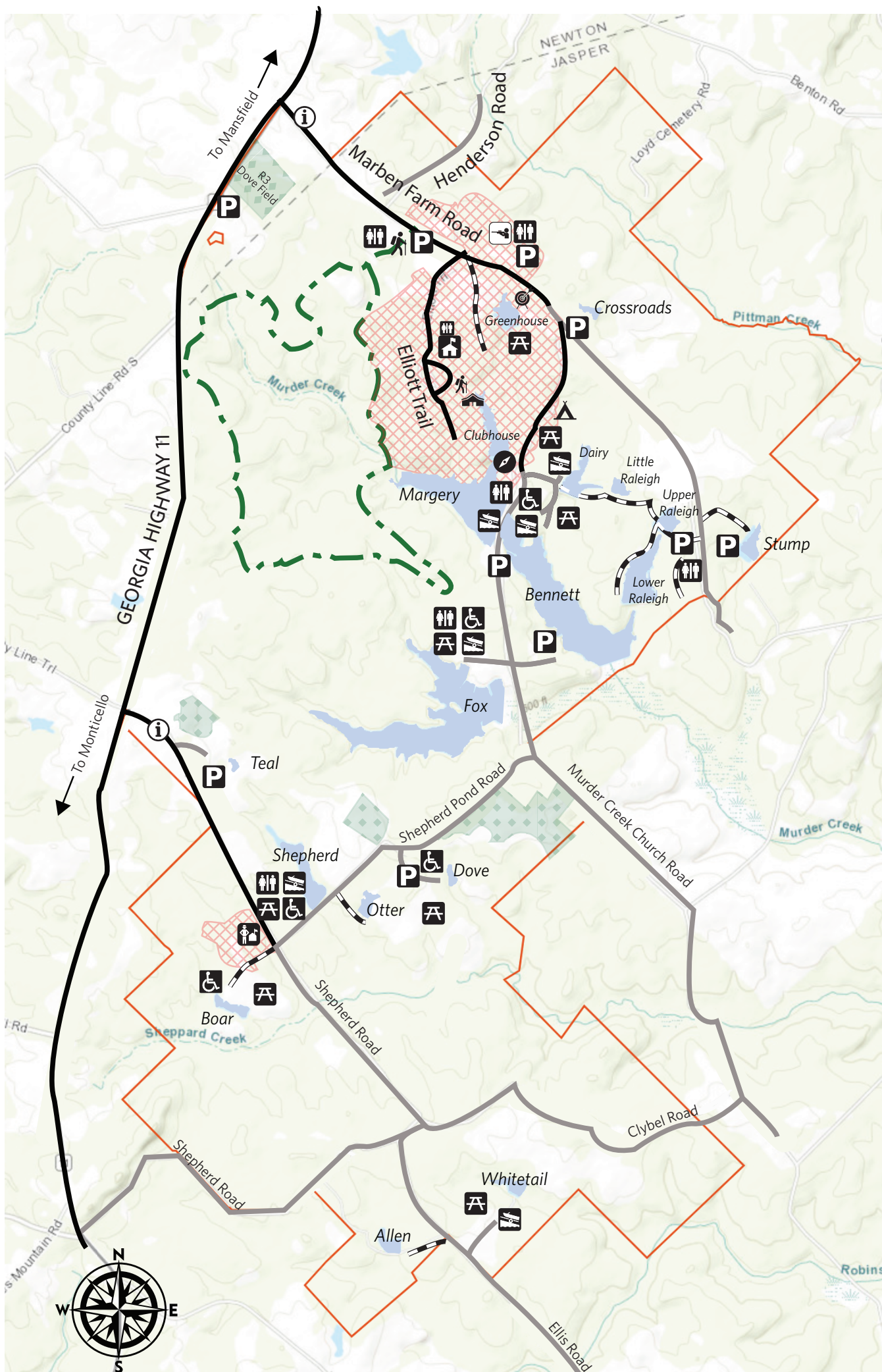
## Map

543 Elliott Trail  
Mansfield, GA 30055  
770-784-3059

[georgiawildlife.com/charlie-elliott-wildlife-center](http://georgiawildlife.com/charlie-elliott-wildlife-center)

12 miles south of I-20 at Exit 98 (Hwy. 11)  
Jasper & Newton Counties

This state-owned property is managed by the GA Department of Natural Resources' Wildlife Resources Division. Named in honor of Charles Newton Elliott (1906–2000), Governor Zell Miller set aside these 6,700 acres for your enjoyment in 1993. Fishing, hunting, and wildlife education opportunities abound.



- Boundary
- Road (paved)
- Road (gravel)
- Access Road
- Multiuse Trail (5.7 miles)
- P Parking
- Lake
- ▲ Campground
- ♿ Restrooms
- i Information
- 🚶 Trailhead
- 🏹 Shooting Ranges
- 🏹 Archery Range
- 🏠 Office/Visitor Center
- 🏠 Conference Center
- 🚰 Check Station
- 🔍 Joe Tanner Discovery Center
- A Picnic Area
- 🚤 Boat Ramp
- ♿ ADA Pier & Parking
- Safety Zone
- Dove Field

**Greenhouse and Clubhouse  
Lakes and the Visitor &  
Conference Centers are  
located in the Safety Zone.**



Revised March 2025

## Marben Public Fishing Area (PFA)

Refer to the Georgia Hunting & Fishing Regulations booklet for license requirements, and specific rules pertaining to Public Fishing Areas (PFAs).

Licenses are available from any hunting/fishing license dealer including the Charlie Elliott Visitors Center during operating hours. Licenses are also available 24 hours a day at [www.gofishgeorgia.com](http://www.gofishgeorgia.com), or by calling 800-366-2661.

### General Fishing Rules

- Open 24-hours/day
- Gear other than pole and line are prohibited.
- Children under 14 years old must be supervised by an adult.
- Alcohol is prohibited.
- Swimming is prohibited.
- Pets must be on a leash.
- Horses are restricted to open improved roads or the multi-use trail only.
- Vehicles are restricted to open improved roads only. Do not block roads or gates.

### Daily Limits

Largemouth Bass:	5
Hybrid Bass:	5
Channel Catfish:	5
Bream (Bluegill/Red-Ear Sunfish):	15
Black Crappie:	30

Boats: Gas-powered motors may only be run in Fox Lake and Bennett Lake at idle speed only. Gas-powered motors are allowed in all other lakes, but they may not be used to propel the vessel. All boats must carry the required safety equipment, including but not limited to appropriate personal flotation devices. All boats using gas or electric motors must be registered.

**Check information kiosks for the most up-to-date list of ponds open for fishing.**

## Clybel Wildlife Management Area (WMA)

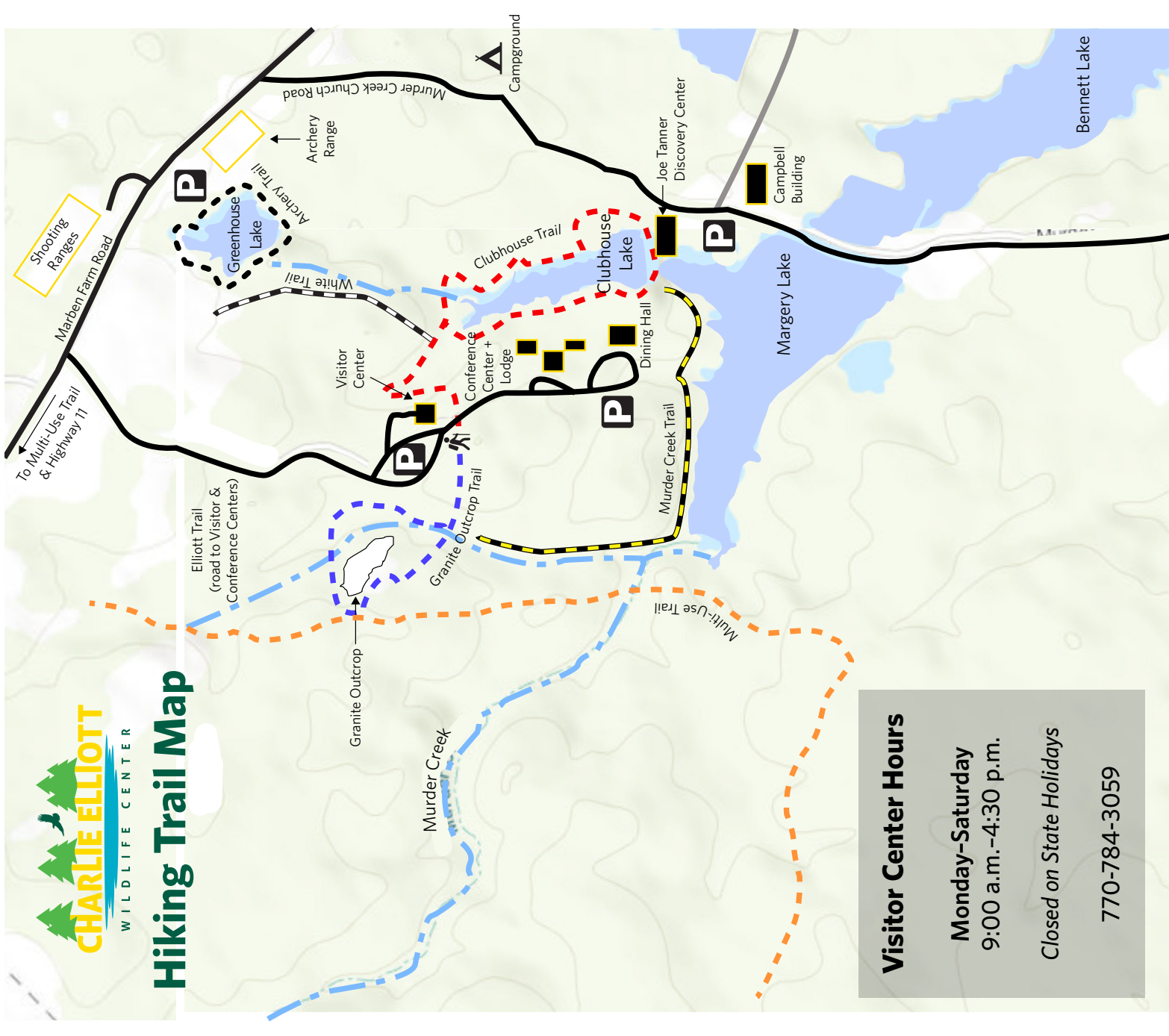
Location:	Jasper and Newton Counties
Acreage:	6,700
Landowner:	GA. Dept. of Natural Resources
Topography:	Moderately rolling; Elevation 500'-700'

### Game Populations

Deer:	Approximately 35 per square mile
Turkey:	Excellent
Squirrel:	Good
Rabbit:	Good
Quail:	Low
Dove:	Good
Ducks:	Moderate

Habitat types include upland pine, upland pine/hardwood, upland hardwood, bottomland hardwood, cutover, and oldfield.

The Department of Natural Resources is subject to Title VI of the Civil Rights Act of 1964 and the Rehabilitation Act of 1973 and offers all persons the opportunity to participate in its public programs regardless of race, color, national origin, age, sex, or handicap. As a recipient of federal funds from the Department of the Interior, the Department's programs must be operated free from discrimination. If you believe that you have been discriminated against in any program or activity, or if you desire further information regarding the prohibition of discrimination, please write to: The Office of Equal Opportunity, U.S. Department of the Interior, Office of the Secretary, Washington, DC 20240



### Visitor Center Hours

**Monday-Saturday**  
9:00 a.m.-4:30 p.m.

Closed on State Holidays

770-784-3059

### Key

- Granite Outcrop Trail (Blue): 1.1 miles
- Clubhouse Trail (Red): 1.5 miles
- Murder Creek Trail (Yellow): 0.9 miles
- Multi-Use Trail (Orange): 5.7 miles
- White Trail (White): 0.5 miles

- Trailhead
- Road (paved)
- Road (gravel)
- Lake
- Creek
- Parking
- Archery Trail (0.5 miles)

