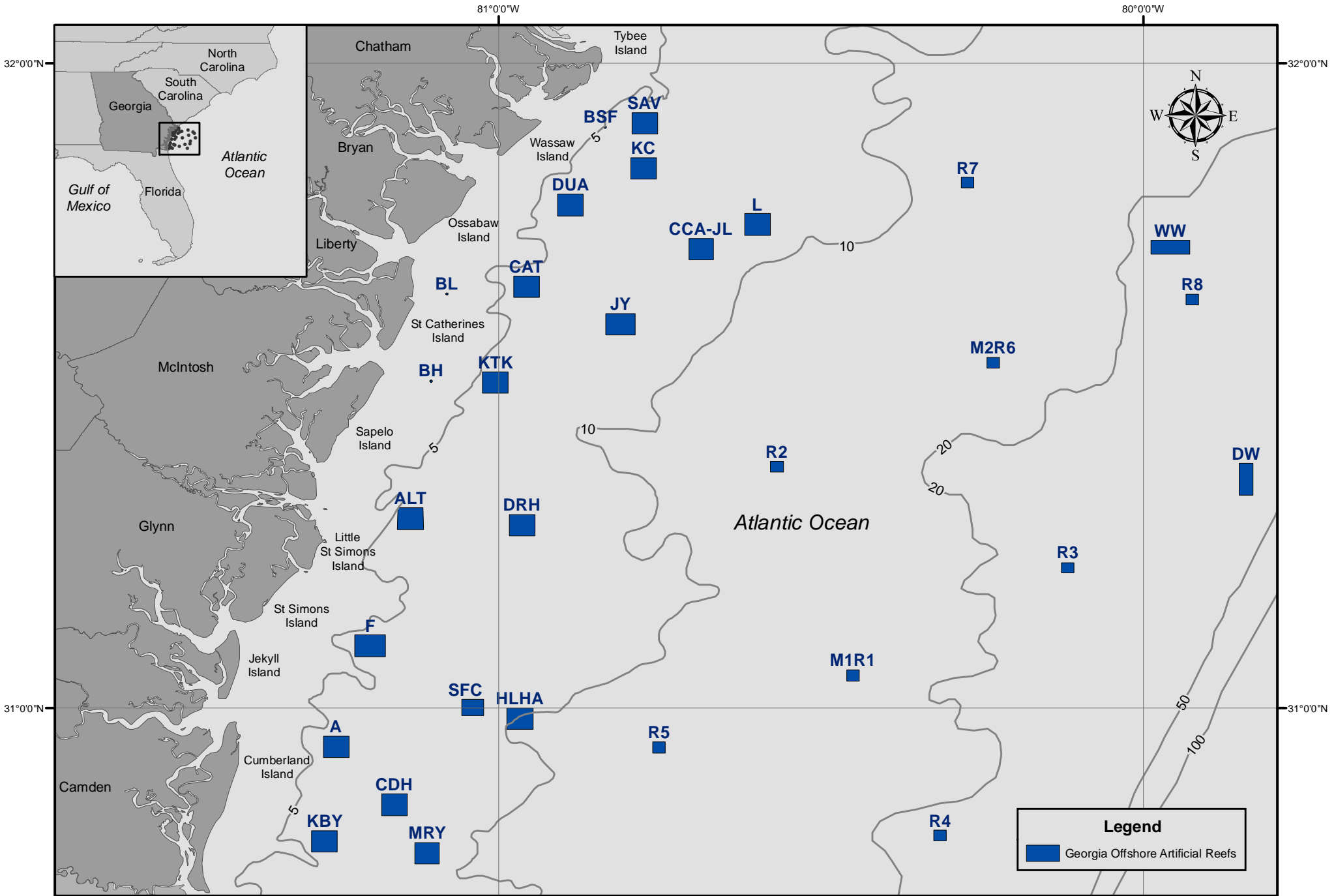
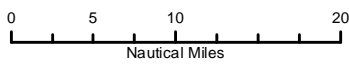


# Georgia Offshore Artificial Reefs



**Legend**

Georgia Offshore Artificial Reefs



1 inch equals 12 nautical miles  
Contour depths in fathoms.  
(1 fathom = 6 feet)

Map Date: 02/24/2017

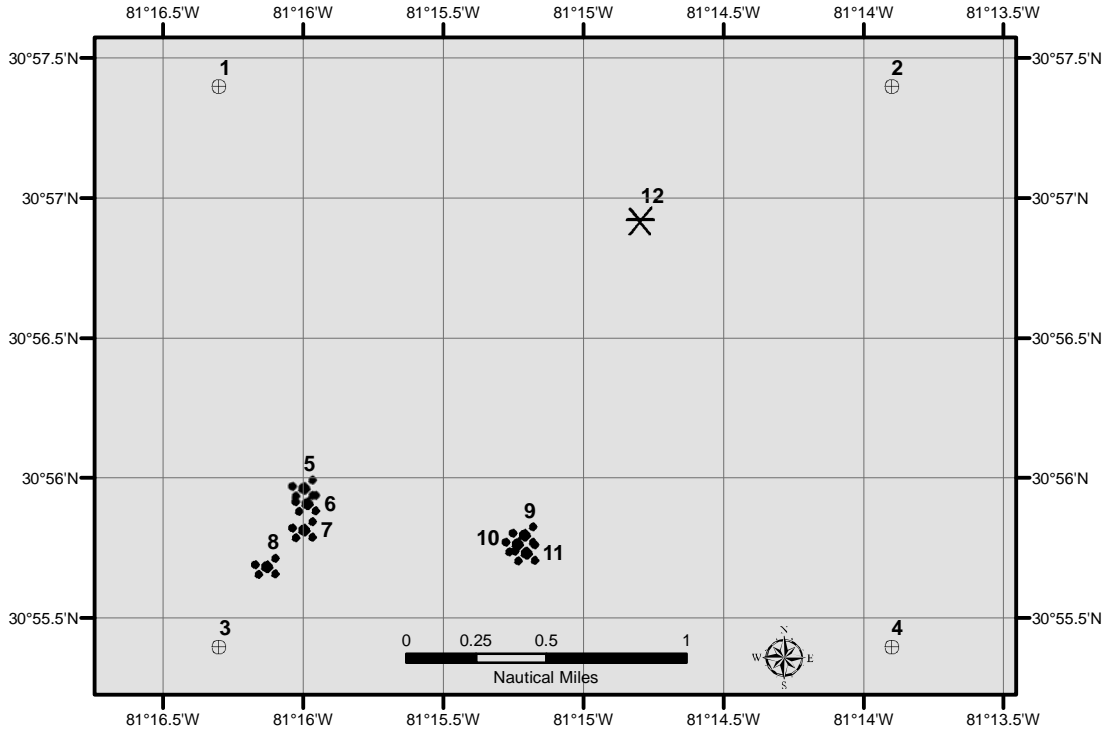
# Georgia Offshore Artificial Reef A

7 nm East of Little Cumberland



Depth: 30 - 45 feet

[www.CoastalGaDNR.com](http://www.CoastalGaDNR.com)



Label	Description	Latitude	Longitude	Deploy Date
1	Corner of Reef Area	30 57.400	-81 16.300	Oct-76
2	Corner of Reef Area	30 57.400	-81 13.900	Oct-76
3	Corner of Reef Area	30 55.400	-81 16.300	Oct-76
4	Corner of Reef Area	30 55.400	-81 13.900	Oct-76
5	Wharf Rubble	30 55.964	-81 15.998	Jun-86
6	Wharf Rubble	30 55.910	-81 15.987	Jun-86
7	Wharf Rubble	30 55.817	-81 15.999	Jul-91
8	Wharf Rubble	30 55.686	-81 16.130	Jul-91
9	Wharf Rubble	30 55.797	-81 15.212	Oct-03
10	Wharf Rubble	30 55.767	-81 15.237	Oct-03
11	Wharf Rubble	30 55.735	-81 15.205	Oct-03
12	Concrete Poles	30 56.922	-81 14.795	Jul-10

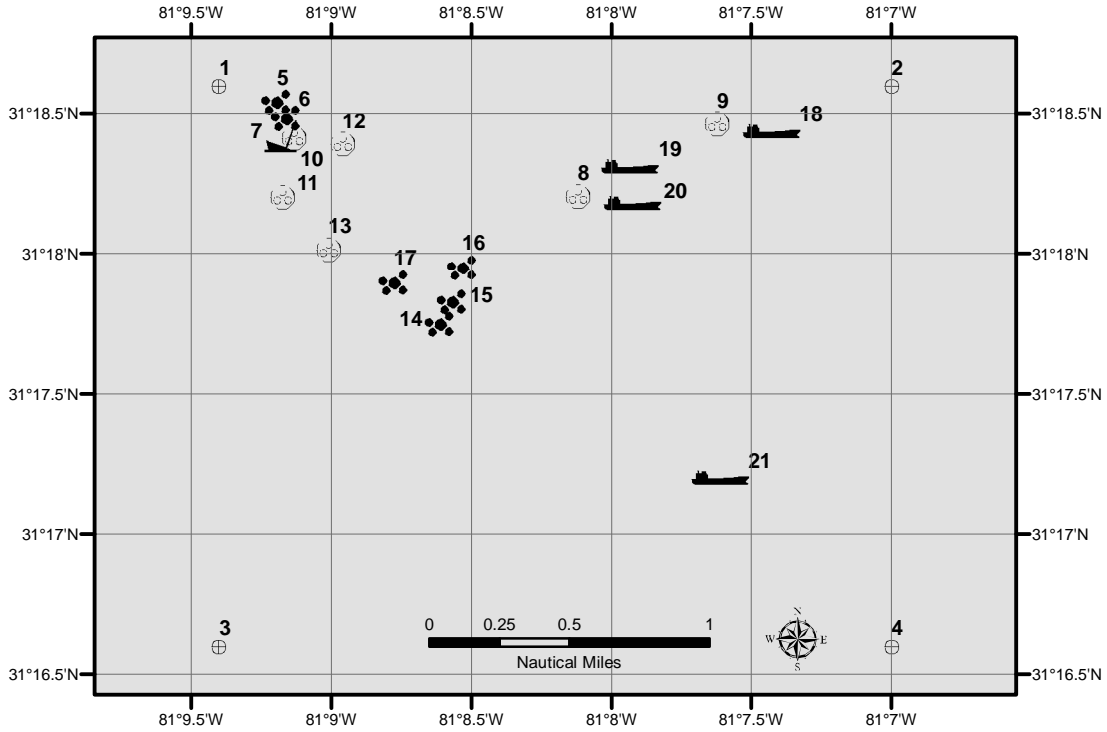
# Georgia Offshore Artificial Reef ALT

6 nm East of Little St Simons

Depth: 30 - 40 feet



www.CoastalGaDNR.com



Label	Description	Latitude	Longitude	Deploy Date
1	Corner of Reef Area	31 18.600	-81 09.400	Feb-90
2	Corner of Reef Area	31 18.600	-81 07.000	Feb-90
3	Corner of Reef Area	31 16.600	-81 09.400	Feb-90
4	Corner of Reef Area	31 16.600	-81 07.000	Feb-90
5	Concrete Bridge Rubble	31 18.542	-81 09.195	May-90
6	Concrete Bridge Rubble	31 18.486	-81 09.159	Sep-91
7	40' Steel Crew Boat "Mary Lou"	31 18.422	-81 09.180	Jan-92
8	Pallet Balls	31 18.210	-81 08.120	Apr-98
9	Pallet Balls	31 18.467	-81 07.623	Apr-98
10	Pallet Balls	31 18.418	-81 09.132	Apr-98
11	Pallet Balls	31 18.206	-81 09.173	Apr-98
12	Pallet Balls	31 18.396	-81 08.959	Apr-98
13	Modified Pallet Balls	31 18.020	-81 09.010	Mar-03
14	Bridge Rubble	31 17.750	-81 08.612	Dec-03
15	Bridge Rubble	31 17.830	-81 08.567	Jan-04
16	Bridge Rubble	31 17.954	-81 08.532	Feb-04
17	Bridge Rubble	31 17.898	-81 08.777	Mar-04
18	100' Deck Barge "LLM"	31 18.439	-81 07.430	Jul-04
19	100' Deck Barge	31 18.315	-81 07.934	Jul-04
20	110' Deck Barge "TIC"	31 18.185	-81 07.926	Mar-09
21	110' Deck Barge w Concrete Poles	31 17.202	-81 07.613	Jun-13

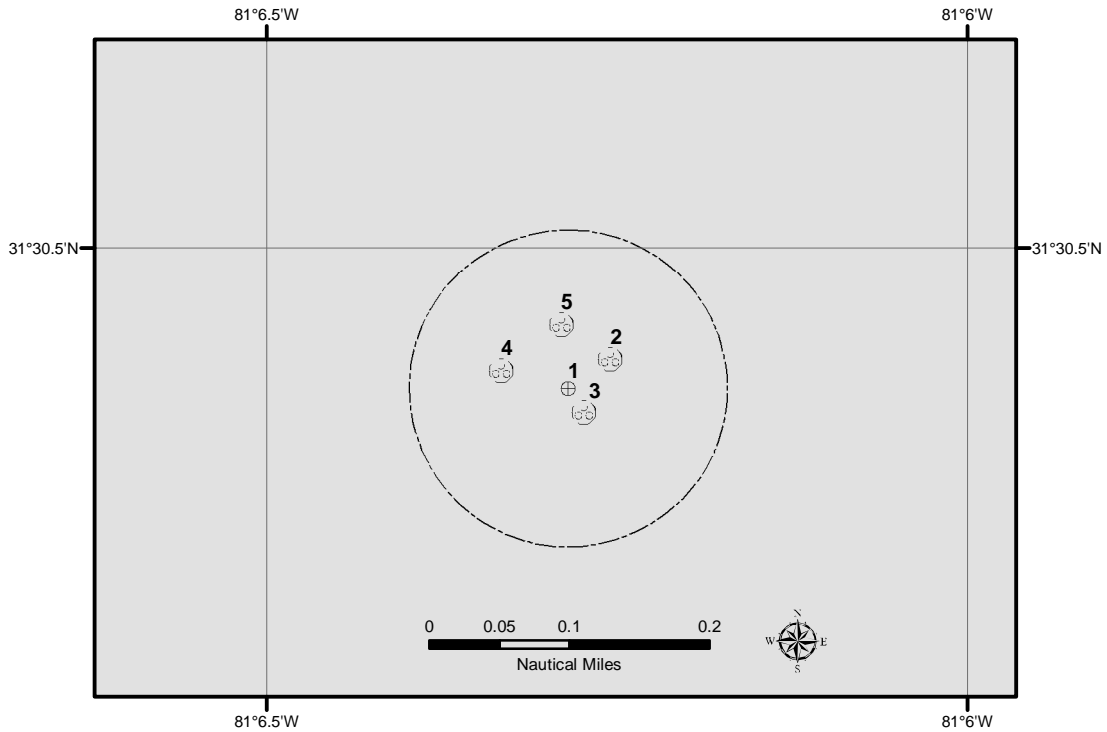
Updated  
12/04/2015

# Georgia Offshore Artificial Reef BH

2.5 nm East of Blackbeard Island

Depth: 10 - 16 feet

[www.CoastalGaDNR.com](http://www.CoastalGaDNR.com)



Label	Description	Latitude	Longitude	Deploy Date
1	Center of Reef	31 30.400	-81 06.285	May-01
2	Concrete Tetrahedrons	31 30.421	-81 06.255	Aug-01
3	Concrete Tetrahedrons	31 30.383	-81 06.274	Aug-01
4	Concrete Tetrahedrons	31 30.413	-81 06.333	Aug-01
5	Concrete Tetrahedrons	31 30.446	-81 06.290	Aug-01

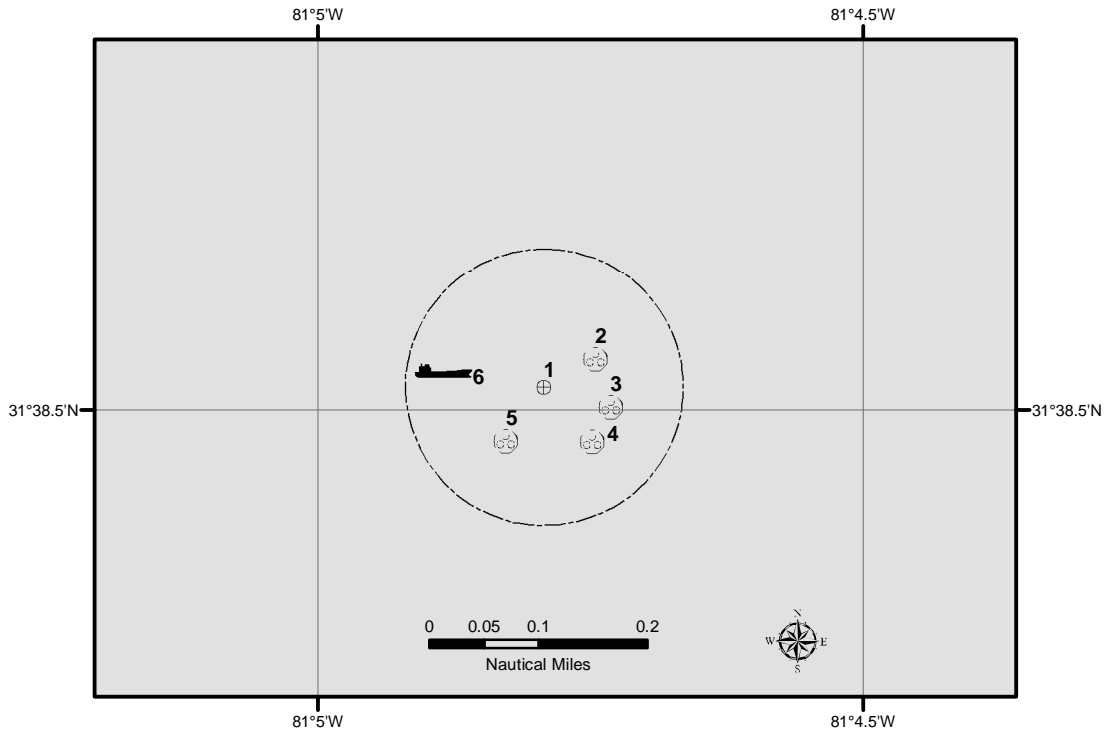
# Georgia Offshore Artificial Reef BL

3.0 nm East of St Catherines Island



Depth: 9 - 15 feet

[www.CoastalGaDNR.com](http://www.CoastalGaDNR.com)



Label	Description	Latitude	Longitude	Deploy Date
1	Center of Reef Area	31 38.521	-81 04.793	May-01
2	Concrete Tetrahedrons	31 38.547	-81 04.746	Aug-01
3	Concrete Tetrahedrons	31 38.503	-81 04.732	Aug-01
4	Concrete Tetrahedrons	31 38.471	-81 04.749	Aug-01
5	Concrete Tetrahedrons	31 38.472	-81 04.828	Aug-01
6	Barge Wreckage	31 38.536	-81 04.885	Unknown

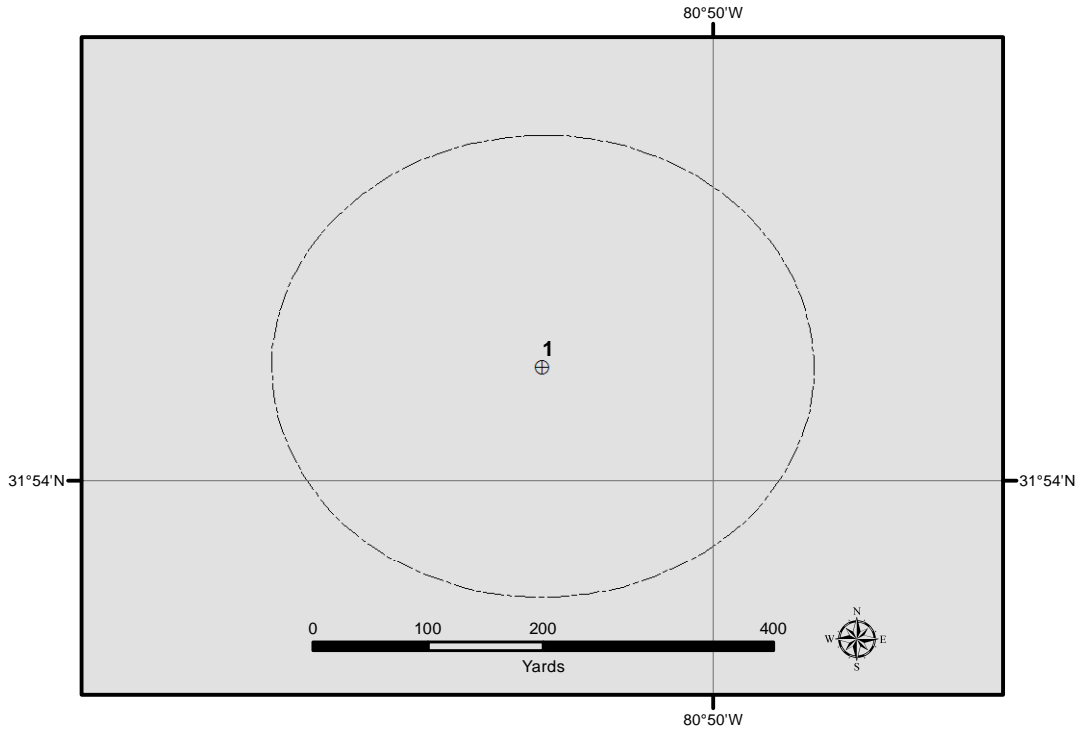
# Georgia Offshore Artificial Reef BSF

4.0 nm Southeast of Little Tybee Island



Depth:

[www.CoastalGaDNR.com](http://www.CoastalGaDNR.com)



Label	Description	Latitude	Longitude	Deploy Date
1	Center of Reef	31 54.089	-80 50.073	

Updated  
12/04/2015

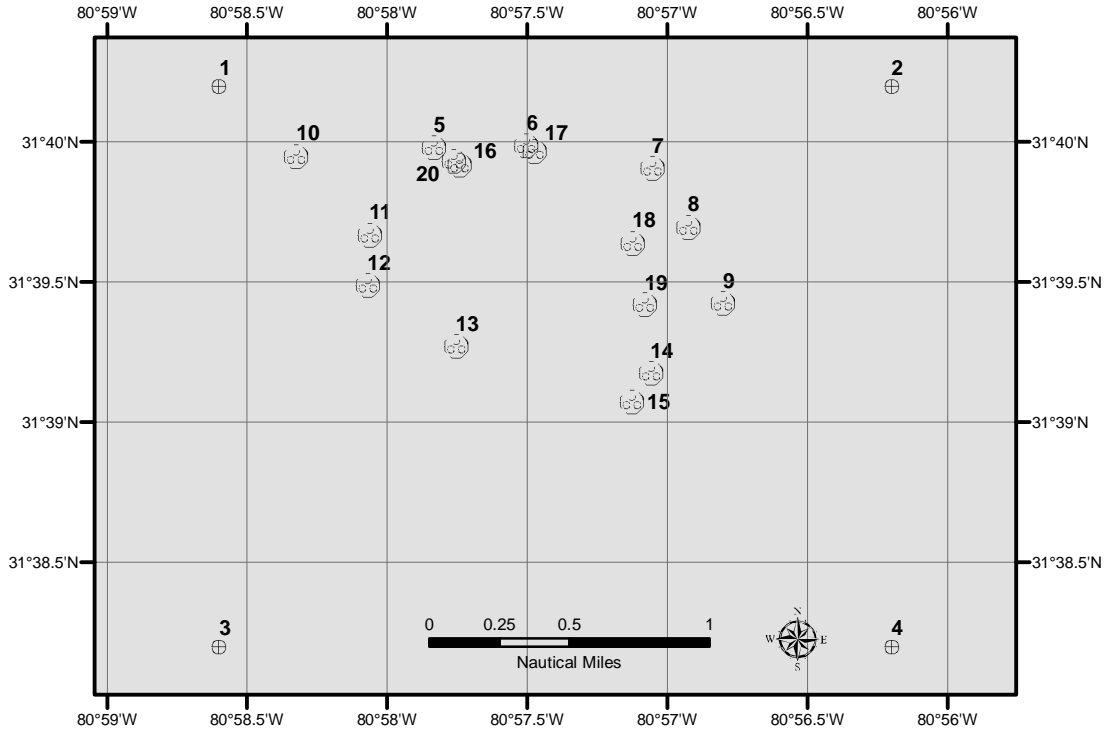
# Georgia Offshore Artificial Reef CAT

7.0 nm East of St Catherines Island



Depth: 35 - 45 feet

www.CoastalGaDNR.com



Label	Description	Latitude	Longitude	Deploy Date
1	Corner of Reef Area	31 40.200	-80 58.600	Feb-90
2	Corner of Reef Area	31 40.200	-80 56.200	Feb-90
3	Corner of Reef Area	31 38.200	-80 58.600	Feb-90
4	Corner of Reef Area	31 38.200	-80 56.200	Feb-90
5	Pallet Balls	31 39.983	-80 57.835	Aug-95
6	Pallet Balls	31 39.990	-80 57.504	Aug-95
7	Pallet Balls	31 39.909	-80 57.056	Aug-95
8	Pallet Balls	31 39.700	-80 56.928	Aug-95
9	Pallet Balls	31 39.425	-80 56.803	Aug-95
10	Concrete Culverts	31 39.951	-80 58.325	Aug-95
11	Concrete Culverts	31 39.671	-80 58.063	Aug-95
12	Concrete Culverts	31 39.490	-80 58.070	Aug-95
13	Concrete Culverts	31 39.272	-80 57.755	Aug-95
14	Stevens Cone Units	31 39.175	-80 57.060	Feb-03
15	Stevens Cone Units	31 39.074	-80 57.127	Feb-03
16	Stevens Cone Units	31 39.920	-80 57.742	Feb-03
17	Stevens Cone Units	31 39.970	-80 57.475	Feb-03
18	Pallet Balls	31 39.642	-80 57.125	Apr-03
19	Pallet Balls	31 39.420	-80 57.082	Apr-03
20	Stevens Cone Units	31 39.934	-80 57.763	Mar-07

Updated  
12/04/2015

# Georgia Offshore Artificial Reef CCA-JL

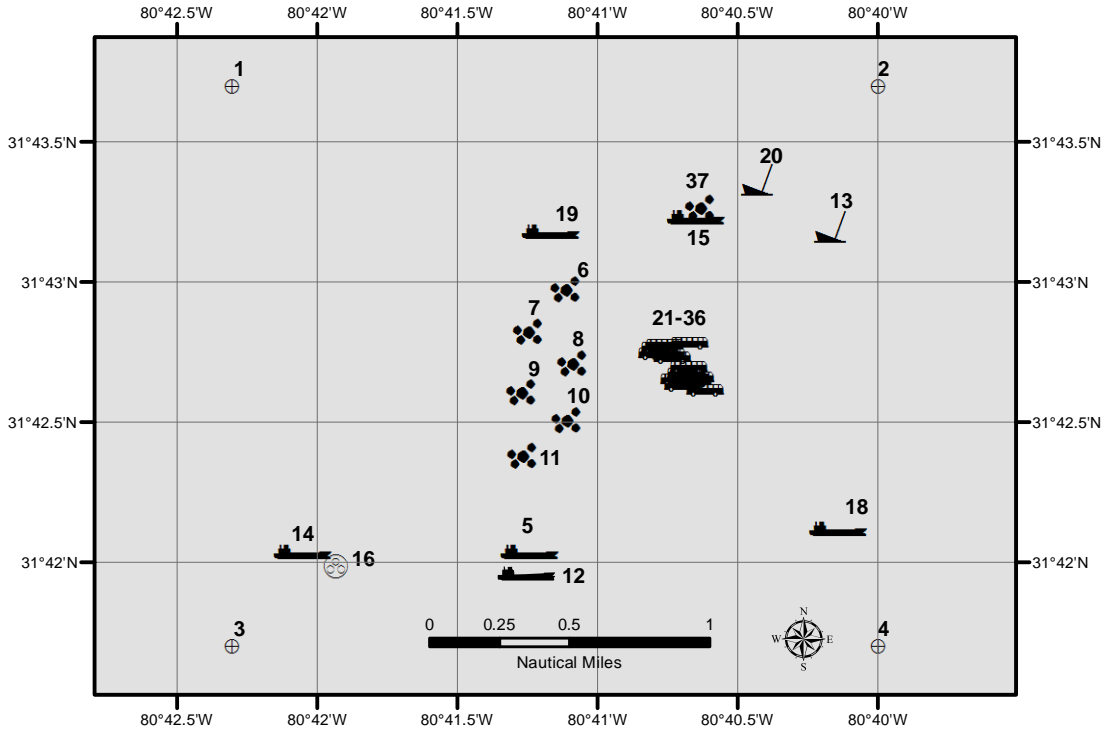
Formerly "CCA"

22 nm East of St Catherines Island



Depth: 50 - 60 feet

[www.CoastalGaDNR.com](http://www.CoastalGaDNR.com)



Label	Description	Latitude	Longitude	Deploy Date	Label	Description	Latitude	Longitude	Deploy Date
1	Corner of Reef Area	31 43.700	-80 42.300	May-91	20	100' Tug "Devon"	31 43.367	-80 40.432	Feb-04
2	Corner of Reef Area	31 43.700	-80 40.000	May-91	21	Subway Car	31 42.746	-80 40.751	Dec-10
3	Corner of Reef Area	31 41.700	-80 42.300	May-91	22	Subway Car	31 42.654	-80 40.661	Dec-10
4	Corner of Reef Area	31 41.700	-80 40.000	May-91	23	Subway Car	31 42.745	-80 40.787	Dec-10
5	95' Deck Barge	31 42.039	-80 41.241	Jan-92	24	Subway Car	31 42.632	-80 40.693	Dec-10
6	Bridge Supports	31 42.976	-80 41.112	Jun-92	25	Subway Car	31 42.768	-80 40.777	Dec-10
7	Bridge Supports	31 42.826	-80 41.246	Jun-92	26	Subway Car	31 42.784	-80 40.669	Dec-10
8	Bridge Supports	31 42.712	-80 41.089	Jun-92	27	Subway Car	31 42.655	-80 40.709	Dec-10
9	Bridge Supports	31 42.609	-80 41.269	Jun-92	28	Subway Car	31 42.658	-80 40.672	Dec-10
10	Bridge Supports	31 42.509	-80 41.110	Jun-92	29	Subway Car	31 42.646	-80 40.684	Dec-10
11	Bridge Supports	31 42.384	-80 41.267	Jun-92	30	Subway Car	31 42.699	-80 40.673	Dec-10
12	110' Deck Barge "TM 1157"	31 42.039	-80 41.241	Jun-92	31	Subway Car	31 42.674	-80 40.685	Dec-10
13	85' Tug "Matt Turecamo"	31 43.200	-80 40.170	May-96	32	5 Subway Cars	31 42.661	-80 40.651	Dec-10
14	130' Deck Barge w/ Culvert	31 42.039	-80 42.052	Mar-01	33	Subway Car	31 42.617	-80 40.617	Dec-10
15	200' Warehouse Barge w/ Culvert	31 43.232	-80 40.650	Mar-01	34	Subway Car	31 42.778	-80 40.760	Dec-10
16	Concrete Culvert	31 41.986	-80 41.930	May-01	35	1 Subway Car	31 42.649	-80 40.660	Dec-10
17	Subway Car	31 42.007	-80 40.006		36	2 Subway Cars	31 42.731	-80 40.733	Dec-10
18	195' Hopper Barge	31 42.121	-80 40.142	Apr-03	37	Concrete Culvert	31 43.266	-80 40.632	Mar-01
19	Deck Barge	31 43.180	-80 41.166	Jul-03					

Updated  
12/05/2016



# Georgia Offshore Artificial Reef CDH

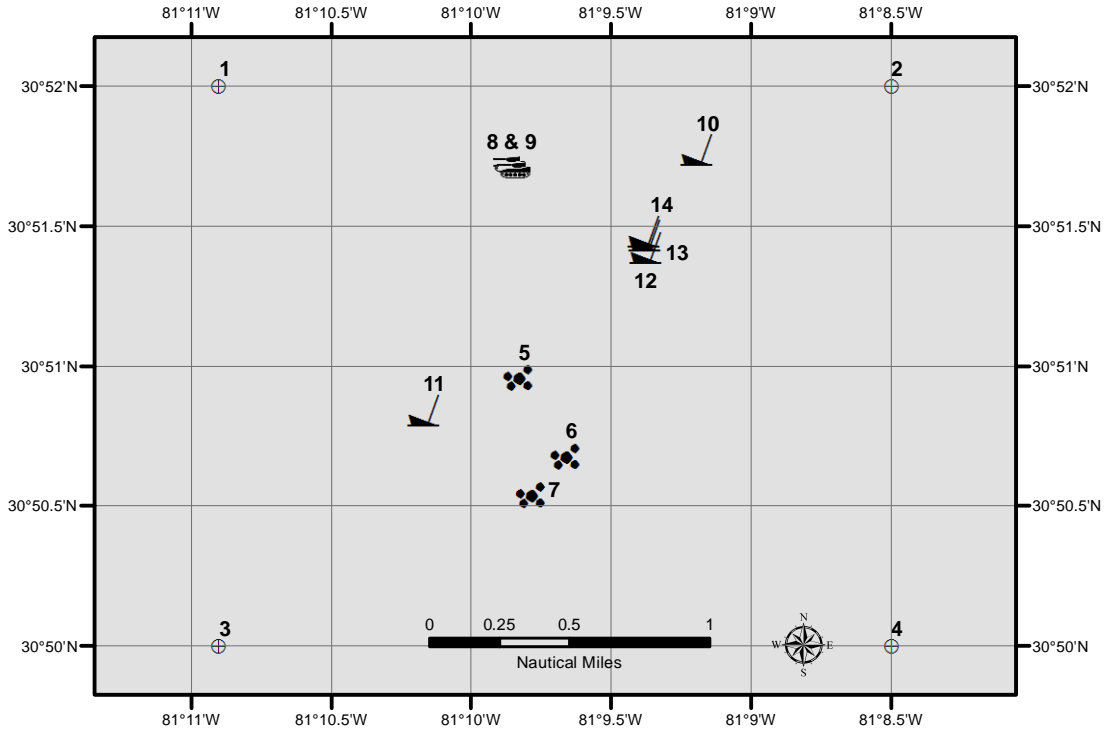
Formerly "C"

13.5 nm East of Cumberland Island



Depth: 45 - 55 feet

[www.CoastalGaDNR.com](http://www.CoastalGaDNR.com)



Label	Description	Latitude	Longitude	Deploy Date
1	Corner of Reef Area	30 52.000	-81 10.900	Apr-69
2	Corner of Reef Area	30 52.000	-81 08.500	Apr-69
3	Corner of Reef Area	30 50.000	-81 10.900	Apr-69
4	Corner of Reef Area	30 50.000	-81 08.500	Apr-69
5	Wharf Rubble	30 50.962	-81 09.831	May-86
6	Wharf Rubble	30 50.681	-81 09.663	Jul-91
7	Wharf Rubble	30 50.541	-81 09.784	Jul-91
8	M-60 Battle Tanks	30 51.701	-81 09.846	Aug-95
9	1 M-60 Battle Tank	30 51.720	-81 09.867	Aug-95
10	105' Tug "Euwin St. Phillips"	30 51.773	-81 09.197	Oct-04
11	Cargo Ship "Esparta" WWII Shipwreck	30 50.845	-81 10.171	Dec-04
12	82' Steel Trawler "Rachael"	30 51.424	-81 09.378	Jan-06
13	45' Steel-Hull Sailboat	30 51.466	-81 09.382	Apr-07
14	55' Steel-Hull Powerboat	30 51.483	-81 09.386	Apr-07

Updated  
12/05/2016

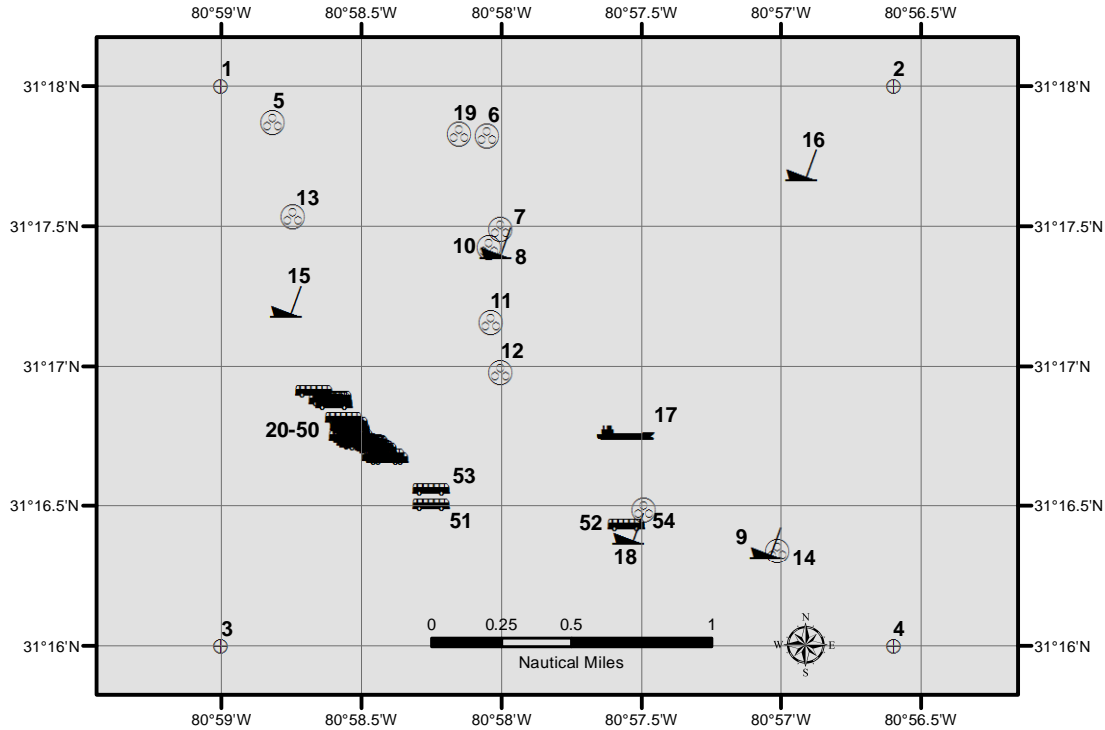
# Georgia Offshore Artificial Reef DRH

15 nm East of Little St Simons Island



Depth: 45 - 55 feet

www.CoastalGaDNR.com



Label	Description	Latitude	Longitude	Deploy Date	Label	Description	Latitude	Longitude	Deploy Date
1	Corner of Reef Area	31 18.000	-80 59.000	Jun-97	28	Subway Car	31 16.778	-80 58.534	Jul-09
2	Corner of Reef Area	31 18.000	-80 56.600	Jun-97	29	Subway Car	31 16.750	-80 58.546	Jul-09
3	Corner of Reef Area	31 16.000	-80 59.000	Jun-97	30	Subway Car	31 16.745	-80 58.531	Jul-09
4	Corner of Reef Area	31 16.000	-80 56.600	Jun-97	31	Subway Car	31 16.754	-80 58.522	Jul-09
5	Modified Pallet Balls	31 17.868	-80 58.815	May-98	32	Subway Car	31 16.734	-80 58.521	Jul-09
6	Modified Pallet Balls	31 17.822	-80 58.049	Dec-99	33	Subway Car	31 16.743	-80 58.505	Jul-09
7	Modified Pallet Balls	31 17.487	-80 58.001	Mar-00	34	Subway Car	31 16.737	-80 58.506	Jul-09
8	65' R/V "Zapala"	31 17.441	-80 58.021	Oct-00	35	Subway Car	31 16.732	-80 58.504	Jul-09
9	85' Tug "Rio Caroni"	31 16.370	-80 57.058	Oct-00	36	Subway Car	31 16.727	-80 58.508	Jul-09
10	Modified Pallet Balls	31 17.422	-80 58.043	Nov-00	37	Subway Car	31 16.725	-80 58.489	Jul-09
11	Modified Pallet Balls	31 17.157	-80 58.038	Nov-00	38	Subway Car	31 16.737	-80 58.486	Jul-09
12	Modified Pallet Balls	31 16.979	-80 58.003	Nov-00	39	Subway Car	31 16.737	-80 58.482	Jul-09
13	Modified Pallet Balls	31 17.533	-80 58.742	Nov-00	40	Subway Car	31 16.735	-80 58.481	Jul-09
14	Modified Pallet Balls	31 16.341	-80 57.014	Nov-00	41	Subway Car	31 16.735	-80 58.473	Jul-09
15	Wreck "John Bird"	31 17.232	-80 58.765	Unknown	42	Subway Car	31 16.731	-80 58.475	Jul-09
16	110' Tug "Vincent Turecamo"	31 17.717	-80 56.928	Apr-04	43	Subway Car	31 16.730	-80 58.469	Jul-09
17	80' Barge "Sapelo II" w Chicken Coops	31 16.764	-80 57.558	Jun-06	44	Subway Car	31 16.717	-80 58.456	Jul-09
18	140' Cargo Vessel "Oriental Trader"	31 16.421	-80 57.547	Sep-06	45	Subway Car	31 16.714	-80 58.448	Jul-09
19	Stevens Cone Units	31 17.829	-80 58.149	Dec-06	46	Subway Car	31 16.708	-80 58.439	Jul-09
20	1 Subway Car	31 16.911	-80 58.667	Jul-09	47	Subway Car	31 16.679	-80 58.429	Jul-09
21	2 Subway Cars	31 16.881	-80 58.619	Jul-09	48	Subway Car	31 16.685	-80 58.409	Jul-09
22	Subway Car	31 16.888	-80 58.604	Jul-09	49	Subway Car	31 16.673	-80 58.412	Jul-09
23	Subway Car	31 16.891	-80 58.597	Jul-09	50	Subway Car	31 16.672	-80 58.396	Jul-09
24	Subway Car	31 16.869	-80 58.595	Jul-09	51	Subway Car	31 16.509	-80 58.250	Jul-09
25	Subway Car	31 16.815	-80 58.562	Jul-09	52	Subway Car	31 16.435	-80 57.555	Jul-09
26	Subway Car	31 16.798	-80 58.540	Jul-09	53	Subway Car	31 16.563	-80 58.249	Jul-09
27	Subway Car	31 16.790	-80 58.544	Jul-09	54	Pallet Balls	31 16.489	-80 57.492	Oct-12

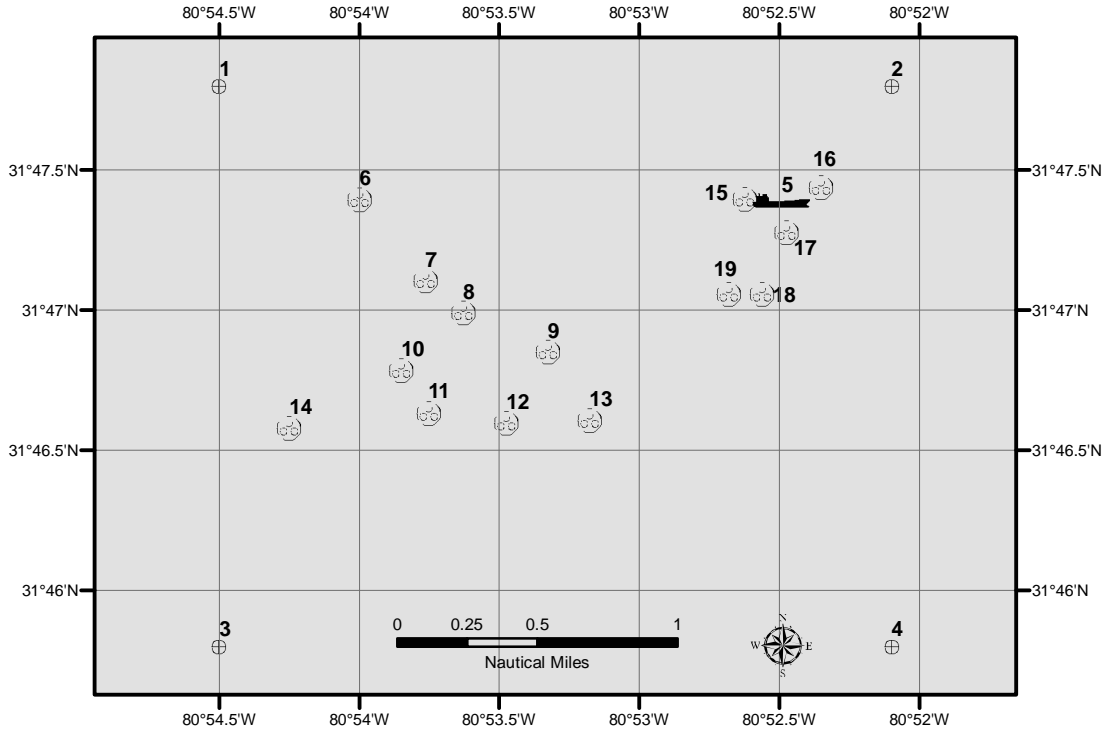
# Georgia Offshore Artificial Reef DUA

7 nm East of Ossabaw Island

Depth: 35 - 45 feet



www.CoastalGaDNR.com



Label	Description	Latitude	Longitude	Deploy Date
1	Corner of Reef Area	31 47.800	-80 54.500	Feb-90
2	Corner of Reef Area	31 47.800	-80 52.100	Feb-90
3	Corner of Reef Area	31 45.800	-80 54.500	Feb-90
4	Corner of Reef Area	31 45.800	-80 52.100	Feb-90
5	35' Barge "Ansley"	31 47.393	-80 52.496	Aug-91
6	Concrete Boxes	31 47.397	-80 54.000	Jul-96
7	Concrete Boxes	31 47.104	-80 53.765	Jul-96
8	Concrete Boxes	31 46.990	-80 53.629	Jul-96
9	Concrete Culvert	31 46.852	-80 53.327	Aug-96
10	Concrete Culvert	31 46.785	-80 53.850	Aug-96
11	Concrete Culvert	31 46.633	-80 53.753	Aug-96
12	Concrete Culvert	31 46.597	-80 53.475	Sep-96
13	Concrete Culvert	31 46.606	-80 53.178	Sep-96
14	Concrete Culvert	31 46.580	-80 54.250	Sep-96
15	Pallet Balls	31 47.399	-80 52.626	Feb-98
16	Pallet Balls	31 47.442	-80 52.354	Feb-98
17	Concrete Culvert	31 47.282	-80 52.477	Jun-02
18	Stevens Cone Units	31 47.058	-80 52.564	Mar-04
19	Stevens Cone Units	31 47.057	-80 52.683	Dec-06

Updated  
12/04/2015

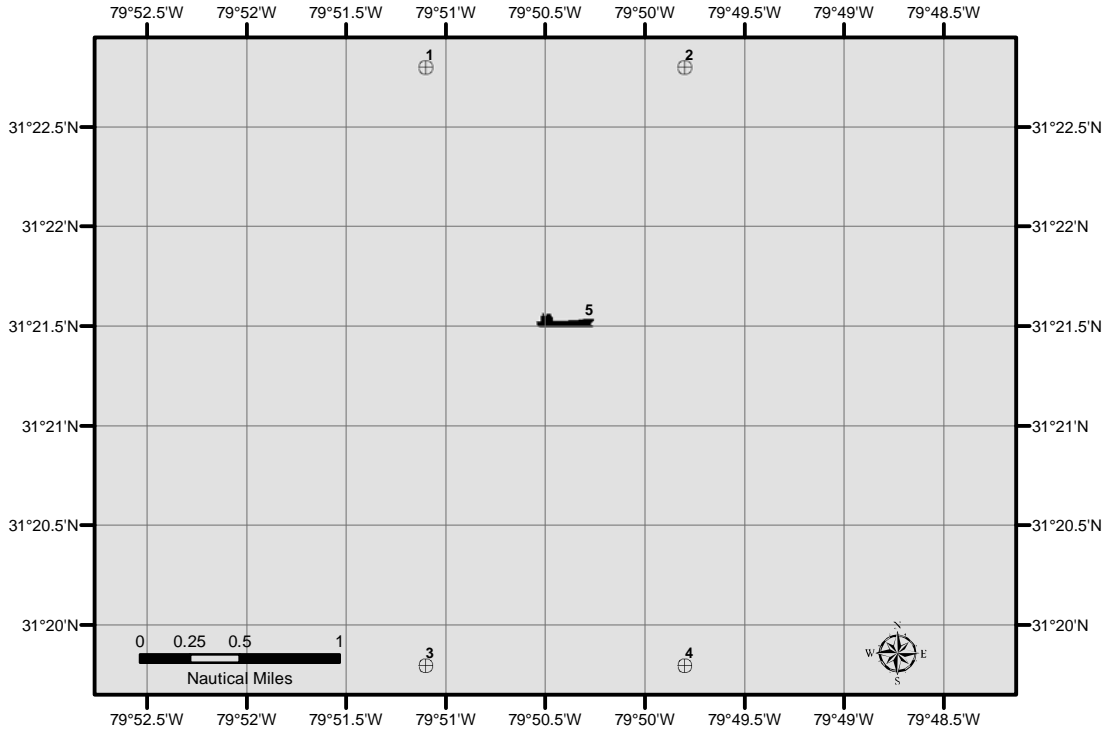
# Georgia Offshore Artificial Reef DW



70 nm East of Sapelo Island

Depth: 150-170 feet

[www.CoastalGaDNR.com](http://www.CoastalGaDNR.com)



Label	Description	Latitude	Longitude	Deploy Date
1	Corner of Reef Area	31 22.800	-79 51.100	Dec-98
2	Corner of Reef Area	31 22.800	-79 49.800	Dec-98
3	Corner of Reef Area	31 19.800	-79 51.100	Dec-98
4	Corner of Reef Area	31 19.800	-79 49.800	Dec-98
5	300' Dump Scow	31 21.525	-79 50.403	Jun-98

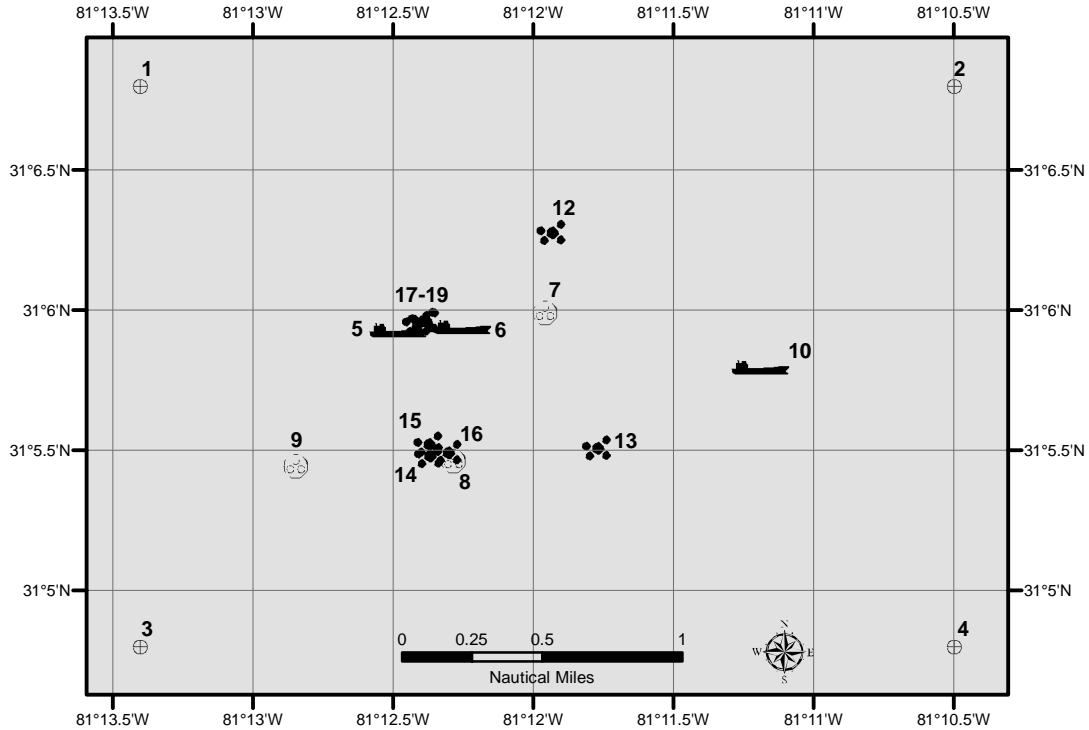
Updated  
12/04/2015

# Georgia Offshore Artificial Reef F

9 nm East of Jekyll Island

Depth: 35 - 45 feet

www.CoastalGaDNR.com



Label	Description	Latitude	Longitude	Deploy Date
1	Corner of Reef Area	31 06.800	-81 13.400	Jun-71
2	Corner of Reef Area	31 06.800	-81 10.500	Jun-71
3	Corner of Reef Area	31 04.800	-81 13.400	Jun-71
4	Corner of Reef Area	31 04.800	-81 10.500	Jun-71
5	55' Landing Craft "LCM-1"	31 05.926	-81 12.483	Mar-87
6	55' Landing Craft "LCM-6"	31 05.939	-81 12.255	Sep-87
7	Tire Units	31 05.990	-81 11.959	Feb-94
8	Pallet Balls	31 05.463	-81 12.286	May-98
9	Pallet Balls	31 05.445	-81 12.847	May-98
10	200' Deck Barge "Recchi GLF"	31 05.794	-81 11.191	May-98
11	Concrete Bridge Rubble	Confirmed not present (retired)		
12	Concrete Bridge Rubble	31 06.281	-81 11.933	Aug-03
13	Concrete Bridge Rubble	31 05.508	-81 11.771	Sep-03
14	Bridge Rubble	31 05.481	-81 12.371	Nov-03
15	Bridge Rubble	31 05.523	-81 12.373	Dec-03
16	Bridge Rubble	31 05.493	-81 12.304	Dec-03
17	Concrete Culvert	31 05.953	-81 12.415	Aug-15
18	Concrete Culvert	31 05.963	-81 12.394	Aug-15
19	Concrete Culvert	31 05.962	-81 12.384	Aug-15

Updated  
12/04/2015

# Georgia Offshore Artificial Reef HLHA

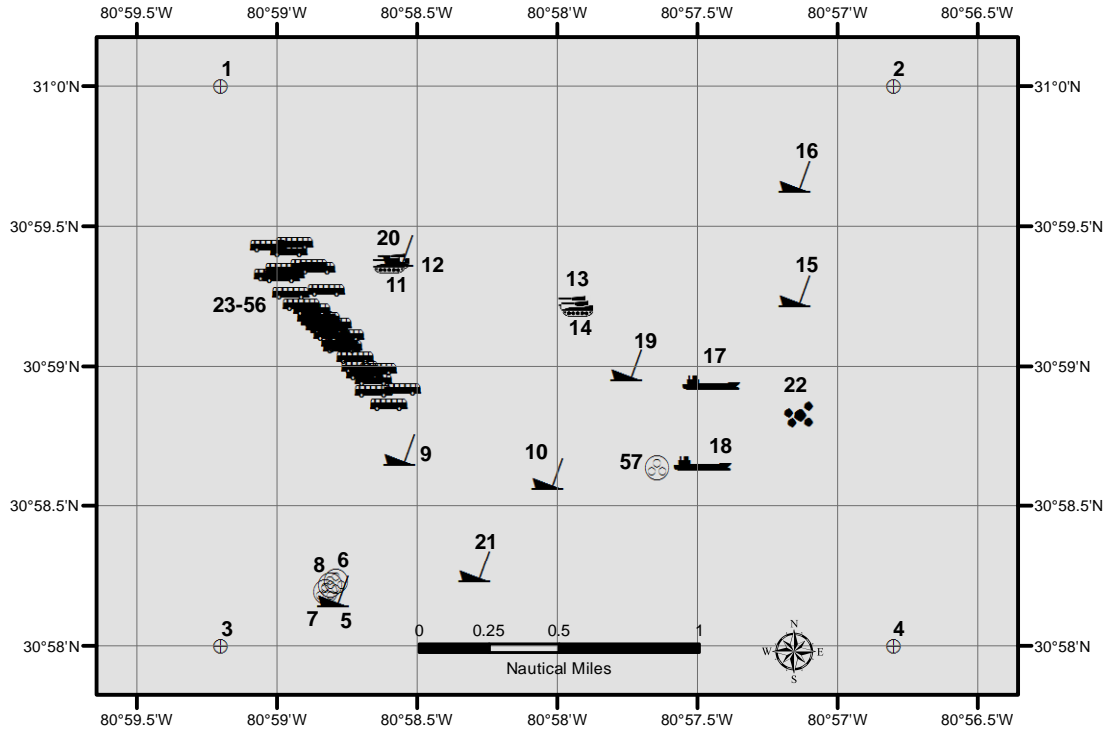
## Formerly "G"

23 nm East of Little Cumberland Island



Depth: 55 - 75 feet

www.CoastalGaDNR.com



Label	Description	Latitude	Longitude	Deploy Date	Label	Description	Latitude	Longitude	Deploy Date
1	Corner of Reef Area	31 00.000	-80 59.200	Jun-71	30	Subway Cars	30 59.362	-80 58.885	Nov-08
2	Corner of Reef Area	31 00.000	-80 56.800	Jun-71	31	1 Subway Car	30 58.954	-80 58.655	Nov-08
3	Corner of Reef Area	30 58.000	-80 59.200	Jun-71	32	1 Subway Car	30 59.033	-80 58.719	Nov-08
4	Corner of Reef Area	30 58.000	-80 56.800	Jun-71	33	2 Subway Cars	30 59.075	-80 58.759	Nov-08
5	100' Steel Tug "Tampa" w Tires	30 58.198	-80 58.800	Jul-73	34	1 Subway Car	30 59.114	-80 58.802	Nov-08
6	700 Tire Units	30 58.230	-80 58.787	Jan-74	35	2 Subway Cars	30 59.165	-80 58.845	Nov-08
7	700 Tire Units	30 58.192	-80 58.825	Jan-74	36	2 Subway Cars	30 59.222	-80 58.911	Nov-08
8	500 Tire Units	30 58.216	-80 58.809	Feb-74	37	Subway Cars	30 59.262	-80 58.948	Nov-08
9	447' Liberty Ship "Edwin Nettleton"	30 58.704	-80 58.562	May-75	38	Subway Cars	30 59.326	-80 59.015	Nov-08
10	103' x 23' Tug "Recife"	30 58.617	-80 58.034	Apr-86	39	Subway Cars	30 59.429	-80 59.027	Nov-08
11	M-60 Battle Tanks	30 59.361	-80 58.603	Aug-95	40	Subway Cars	30 59.414	-80 58.956	Nov-08
12	2 M-60 Battle Tanks	30 59.374	-80 58.586	Aug-95	41	Subway Cars	30 59.350	-80 58.857	Nov-08
13	1 M-60 Battle Tank	30 59.226	-80 57.943	Aug-95	42	Subway Cars	30 59.272	-80 58.821	Nov-08
14	2 M-60 Battle Tanks	30 59.208	-80 57.930	Aug-95	43	1 Subway Car	30 59.154	-80 58.799	Nov-08
15	110' Tug "Mac Tide 21"	30 59.269	-80 57.153	Oct-00	44	1 Subway Car	30 59.112	-80 58.753	Nov-08
16	110' Tug "McAllister"	30 59.678	-80 57.153	Nov-03	45	1 Subway Car	30 58.973	-80 58.684	Nov-08
17	190' Northern Hopper Barge "MOBRO"	30 58.944	-80 57.452	Jun-02	46	1 Subway Car	30 58.911	-80 58.653	Nov-08
18	190' Southern Hopper Barge "MOBRO"	30 58.655	-80 57.483	Jun-02	47	1 Subway Car	30 58.919	-80 58.553	Nov-08
19	152' Research Vessel "Bowstring"	30 59.005	-80 57.752	Nov-03	48	2 Subway Cars	30 58.990	-80 58.636	Nov-08
20	45' Sailboat "Grace"	30 59.414	-80 58.568	Aug-05	49	1 Subway Car	30 59.089	-80 58.773	Nov-08
21	95' Tugboat "Kinsale"	30 58.284	-80 58.296	Aug-07	50	Subway Cars	30 59.137	-80 58.813	Nov-08
22	Jacksonville Concrete Rubble	30 58.829	-80 57.138	Aug-07	51	2 Subway Cars	30 59.178	-80 58.860	Nov-08
23	1 Subway Car	30 58.865	-80 58.601	Nov-08	52	Subway Cars	30 59.331	-80 58.967	Nov-08
24	2 Subway Cars	30 58.998	-80 58.701	Nov-08	54	1 Subway Car	30 59.172	-80 58.840	Nov-08
25	4 Subway Cars	30 59.070	-80 58.768	Nov-08	55	2 Subway Cars	30 59.163	-80 58.846	Nov-08
26	2-4 Subway Cars	30 59.144	-80 58.829	Nov-08	56	Subway Cars	30 59.347	-80 58.973	Nov-08
27	1 Subway Car	30 59.203	-80 58.874	Nov-08	57	Stevens Cones	30 58.639	-80 57.642	Unknown
28	Subway Cars	30 59.320	-80 58.984	Nov-08	58	Stevens Cones	30 58.634	-80 58.698	Unknown
29	Subway Cars	30 59.442	-80 58.934	Nov-08	59	Stevens Cones	30 58.656	-80 58.766	Unknown

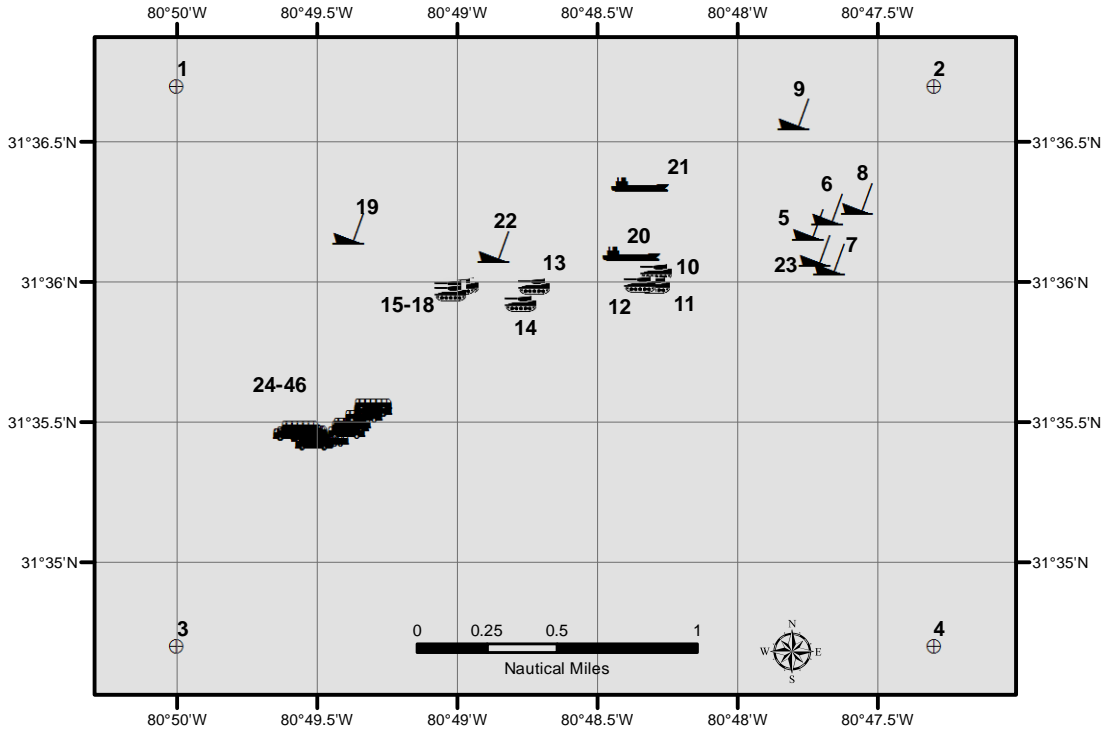
# Georgia Offshore Artificial Reef JY Formerly "J"

17.5 nm East of St Catherines Island



Depth: 55 - 75 feet

www.CoastalGaDNR.com



Label	Description	Latitude	Longitude	Deploy Date	Label	Description	Latitude	Longitude	Deploy Date
1	Corner of Reef Area	31 36.700	-80 50.000	Jun-71	25	3-4 Subway Cars	31 35.466	-80 49.574	Dec-09
2	Corner of Reef Area	31 36.700	-80 47.300	Jun-71	26	Subway Cars	31 35.459	-80 49.587	Dec-09
3	Corner of Reef Area	31 34.700	-80 50.000	Jun-71	27	Subway Cars	31 35.469	-80 49.528	Dec-09
4	Corner of Reef Area	31 34.700	-80 47.300	Jun-71	28	Subway Cars	31 35.486	-80 49.379	Dec-09
5	442' Liberty Ship "SS Addie Bagley Daniels"	31 36.207	-80 47.750	Jul-75	29	Subway Cars	31 35.462	-80 49.542	Dec-09
6	442' Liberty Ship "SS Addie Bagley Daniels"	31 36.260	-80 47.680	Jul-75	30	Subway Cars	31 35.473	-80 49.545	Dec-09
7	99' Tug "El Mira"	31 36.082	-80 47.673	Feb-80	31	Subway Cars	31 35.439	-80 49.474	Dec-09
8	65' Ferry Boat "Janet"	31 36.298	-80 47.575	Jun-87	32	Subway Cars	31 35.486	-80 49.558	Dec-09
9	185' USGC Buoy Tender "Sagebrush"	31 36.600	-80 47.800	Jun-89	33	Subway Cars	31 35.460	-80 49.589	Dec-09
10	2 M-60 Battle Tanks	31 36.036	-80 48.295	Aug-95	34	Subway Cars	31 35.462	-80 49.546	Dec-09
11	2 M-60 Battle Tanks	31 35.990	-80 48.300	Aug-95	35	Subway Cars	31 35.438	-80 49.497	Dec-09
12	3 M-60 Battle Tanks	31 35.993	-80 48.352	Aug-95	36	Subway Cars	31 35.469	-80 49.534	Dec-09
13	1 M-60 Battle Tank	31 35.987	-80 48.728	Aug-95	37	Subway Cars	31 35.456	-80 49.525	Dec-09
14	2 M-60 Battle Tanks	31 35.924	-80 48.777	Aug-95	38	Subway Cars	31 35.447	-80 49.523	Dec-09
15	M-60 Battle Tanks	31 35.989	-80 48.982	Aug-95	39	Subway Cars	31 35.428	-80 49.505	Dec-09
16	M-60 Battle Tanks	31 35.987	-80 48.996	Aug-95	40	Subway Cars	31 35.464	-80 49.394	Dec-09
17	M-60 Battle Tanks	31 35.978	-80 49.026	Aug-95	41	Subway Cars	31 35.497	-80 49.374	Dec-09
18	M-60 Battle Tanks	31 35.962	-80 49.027	Aug-95	42	Subway Cars	31 35.523	-80 49.331	Dec-09
19	110' Tug "Rio Apon"	31 36.193	-80 49.385	Oct-00	43	Subway Cars	31 35.437	-80 49.453	Dec-09
20	195' Hopper Barge with 15' Tug	31 36.103	-80 48.378	Aug-02	44	Subway Cars	31 35.544	-80 49.300	Dec-09
21	115' Landing Craft	31 36.350	-80 48.350	Jul-04	45	1 Subway Car	31 35.544	-80 49.296	Dec-09
22	97' Tug "Margaret Turecamo"	31 36.128	-80 48.871	Jan-07	46	Subway Cars	31 35.535	-80 49.726	Dec-09
23	65' Steel Hull RV "Jane Yarn"	31 36.114	-80 47.725	Aug-07	47	5 Subway Cars	31 35.425	-80 49.511	Dec-09
24	1 Subway Car	31 35.566	-80 49.297	Dec-09					

Updated 12/05/2016

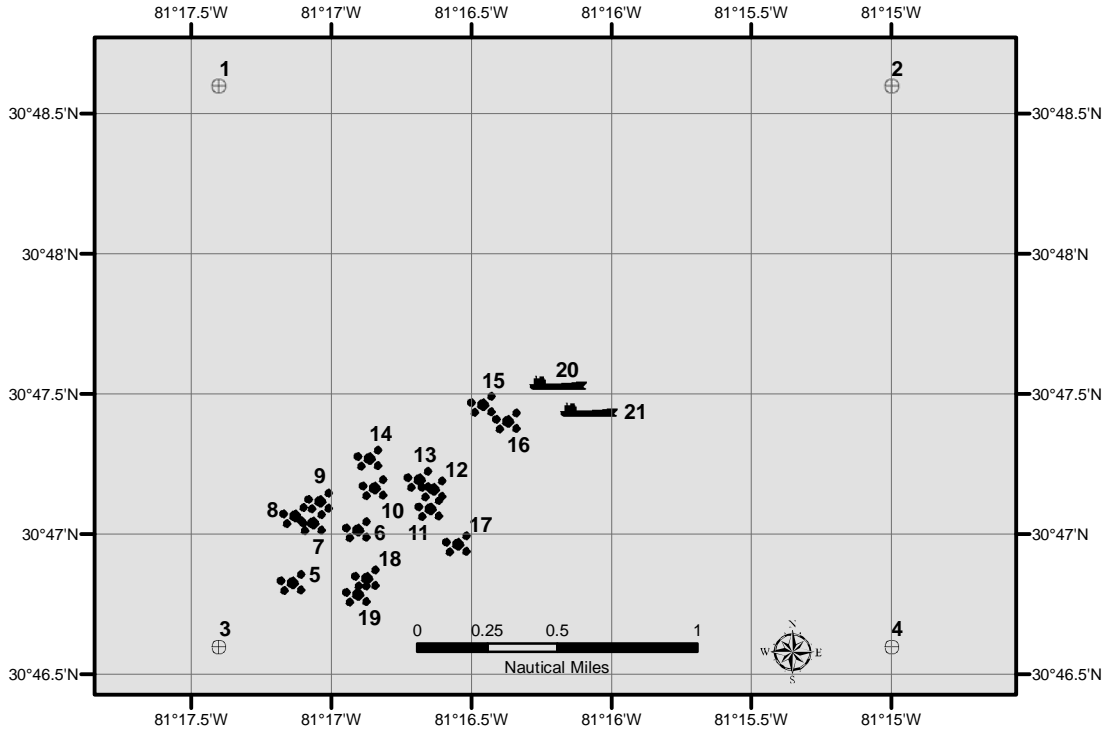
# Georgia Offshore Artificial Reef KBY

8 nm East of Cumberland Island



Depth: 35 - 45 feet

www.CoastalGaDNR.com



Label	Description	Latitude	Longitude	Deploy Date
1	Corner of Reef Area	30 48.600	-81 17.400	May-91
2	Corner of Reef Area	30 48.600	-81 15.000	May-91
3	Corner of Reef Area	30 46.600	-81 17.400	May-91
4	Corner of Reef Area	30 46.600	-81 15.000	May-91
5	Wharf Rubble	30 46.829	-81 17.140	Aug-91
6	Wharf Rubble	30 47.016	-81 16.907	Aug-91
7	Wharf Rubble	30 47.041	-81 17.066	Aug-91
8	Wharf Rubble	30 47.066	-81 17.131	Aug-91
9	Wharf Rubble	30 47.120	-81 17.042	Aug-91
10	Wharf Rubble	30 47.166	-81 16.846	Aug-91
11	Wharf Rubble	30 47.092	-81 16.647	Sep-91
12	Wharf Rubble	30 47.163	-81 16.636	Sep-91
13	Wharf Rubble	30 47.197	-81 16.686	Sep-91
14	Wharf Rubble	30 47.273	-81 16.865	Oct-91
15	Wharf Rubble	30 47.465	-81 16.461	Oct-91
16	Wharf Rubble	30 47.405	-81 16.372	Oct-91
17	Wharf Rubble	30 46.967	-81 16.549	Nov-91
18	Wharf Rubble	30 46.844	-81 16.874	Nov-91
19	Wharf Rubble	30 46.788	-81 16.905	Nov-91
20	150' Dredge Barge	30 47.540	-81 16.192	Aug-03
21	90' Section Barge	30 47.443	-81 16.081	Apr-04

Updated  
12/04/2015



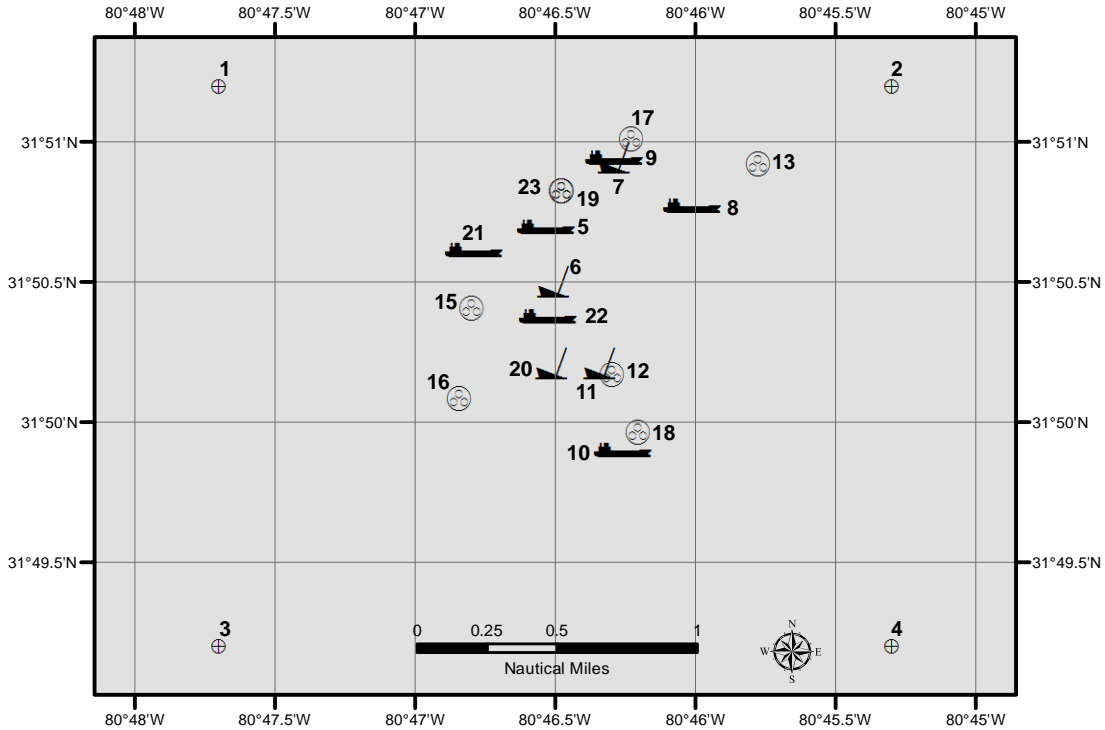
# Georgia Offshore Artificial Reef KC

9 nm Southeast of Wassaw Island



Depth: 40 - 50 feet

www.CoastalGaDNR.com



Label	Description	Latitude	Longitude	Deploy Date
1	Corner of Reef Area	31 51.200	-80 47.700	Jun-72
2	Corner of Reef Area	31 51.200	-80 45.300	Jun-72
3	Corner of Reef Area	31 49.200	-80 47.700	Jun-72
4	Corner of Reef Area	31 49.200	-80 45.300	Jun-72
5	80' Landing Craft "Motherlode"	31 50.699	-80 46.533	Dec-84
6	118' Dump Scow "TMI 100"	31 50.502	-80 46.507	Mar-92
7	120' Gravel Scow	31 50.944	-80 46.290	May-92
8	95' Booster Barge "TMI 115"	31 50.775	-80 46.015	Jun-92
9	Barge "Honey"	31 50.944	-80 46.290	Aug-92
10	110' Deck Barge "Olympics- YC-1117"	31 49.904	-80 46.260	Jun-97
11	29' Sailboat "Jupiter"	31 50.211	-80 46.343	Aug-98
12	Pallet Balls	31 50.171	-80 46.297	Nov-99
13	Pallet Balls	31 50.920	-80 45.777	Nov-99
14	Concrete Culvert	Confirmed not present (retired)		
15	Concrete Culvert	31 50.409	-80 46.798	Dec-01
16	Concrete Culvert	31 50.086	-80 46.842	Dec-01
17	Stevens Cone Units	31 51.010	-80 46.231	May-04
18	Stevens Cone Units	31 49.964	-80 46.205	May-04
19	Concrete Rubble	31 50.827	-80 46.477	Unknown
20	70' Tug Hull "Pegasus"	31 50.213	-80 46.515	Sep-06
21	110' Deck Barge	31 50.617	-80 46.792	Sep-06
22	254' Hopper Barge w Poultry Transport Cages	31 50.381	-80 46.527	Nov-13
23	Tire Units	31 50.824	-80 46.480	Unknown

dated  
5/2016

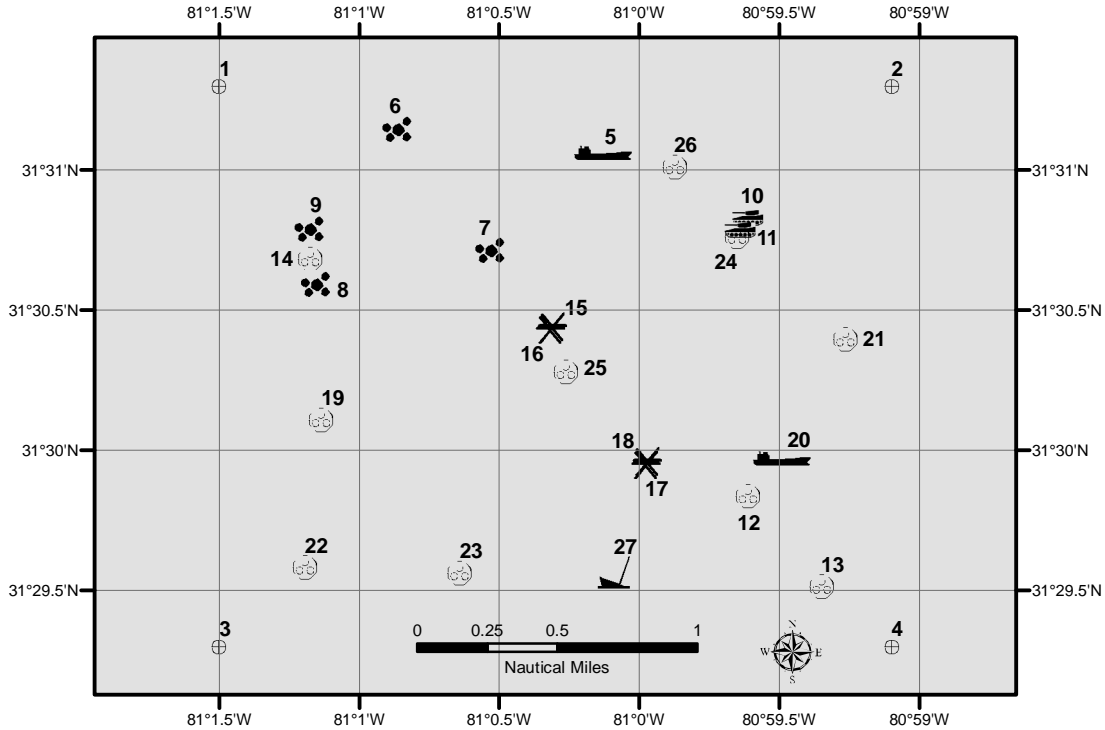
# Georgia Offshore Artificial Reef KTK

7 nm East of Blackbeard Island

Depth: 35 - 45 feet



www.CoastalGaDNR.com



Label	Description	Latitude	Longitude	Deploy Date	Label	Description	Latitude	Longitude	Deploy Date
1	Corner Reef Area	31 31.300	-81 01.500	May-90	15	Concrete Pipe	31 30.440	-81 00.310	Nov-98
2	Corner Reef Area	31 31.300	-80 59.100	May-90	16	Concrete Pipe	31 30.431	-81 00.317	Nov-98
3	Corner Reef Area	31 29.300	-81 01.500	May-90	17	Concrete Pipe	31 29.950	-80 59.976	Dec-98
4	Corner Reef Area	31 29.300	-80 59.100	May-90	18	Concrete Pipe	31 29.961	-80 59.971	Dec-98
5	90' Barge "Modena"	31 31.061	-81 00.132	Oct-90	19	Pallet Balls	31 30.109	-81 01.136	Oct-00
6	Concrete Rubble	31 31.146	-81 00.863	Sep-91	20	150' Barge	31 29.970	-80 59.494	Aug-02
7	Concrete Rubble	31 30.718	-81 00.530	Sep-91	21	Cone Units	31 30.396	-80 59.267	Dec-06
8	Concrete Rubble	31 30.591	-81 01.152	Aug-95	22	Pallet Balls	31 29.584	-81 01.194	Mar-09
9	Concrete Rubble	31 30.792	-81 01.175	Aug-95	23	Pallet Balls	31 29.562	-81 00.642	Mar-09
10	M-60 Battle Tanks	31 30.831	-80 59.614	Aug-95	24	Pallet Balls	31 30.767	-80 59.653	Jul-09
11	M-60 Battle Tanks	31 30.788	-80 59.643	Aug-95	25	Pallet Balls	31 30.280	-81 00.264	Jul-09
12	Pallet Balls	31 29.838	-80 59.614	Aug-95	26	Pallet Balls	31 31.014	-80 59.876	May-11
13	Pallet Balls	31 29.515	-80 59.351	Aug-95	27	39' Vessel	31 29.564	-81 00.091	Sep-12
14	Pallet Balls	31 30.688	-81 01.175	Mar-98					

Updated  
12/04/2015

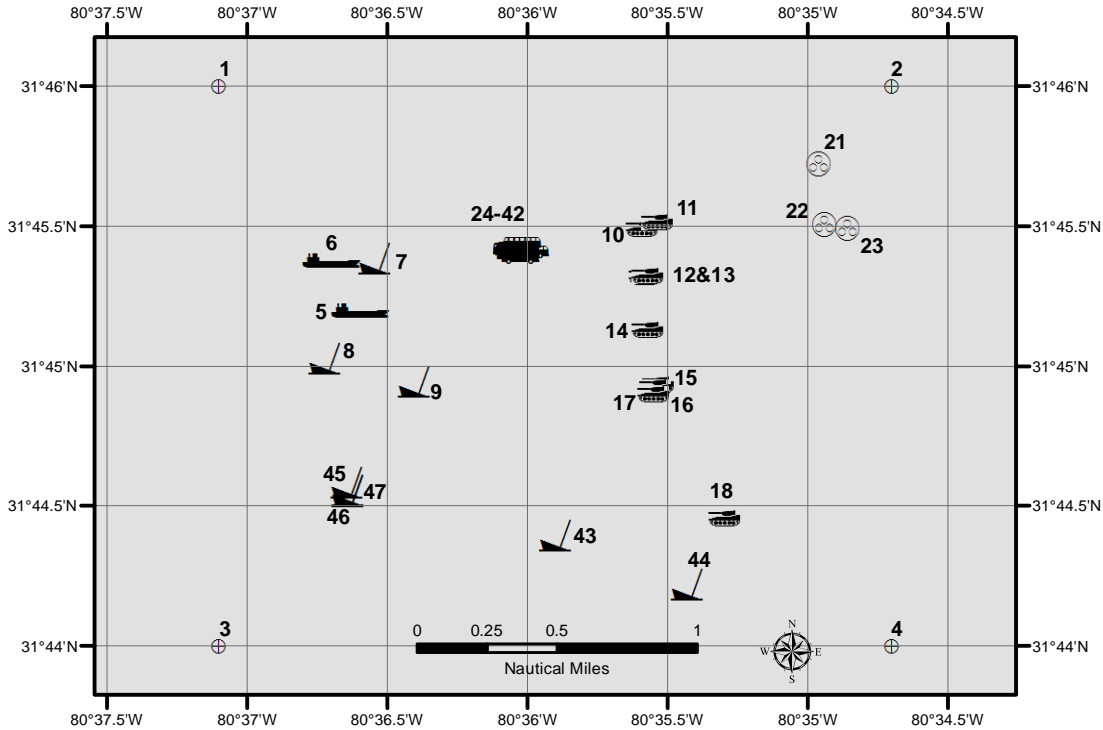
# Georgia Offshore Artificial Reef L

23 nm East of Ossabaw Island



Depth: 55 - 65 feet

www.CoastalGaDNR.com



Label	Description	Latitude	Longitude	Deploy Date	Label	Description	Latitude	Longitude	Deploy Date
1	Corner of Reef Area	31 46.000	-80 37.100	Sep-76	25	1 Subway Car	31 45.427	-80 36.024	Dec-02
2	Corner of Reef Area	31 46.000	-80 34.700	Sep-76	26	Subway Car	31 45.423	-80 36.030	Dec-02
3	Corner of Reef Area	31 44.000	-80 37.100	Sep-76	27	Subway Car	31 45.422	-80 36.027	Dec-02
4	Corner of Reef Area	31 44.000	-80 34.700	Sep-76	28	8-9 Subway Cars	31 45.423	-80 36.037	Dec-02
5	140' Steel Barge "Sayler - CBC 601"	31 45.200	-80 36.596	Mar-77	29	5-6 Subway Cars	31 45.422	-80 36.042	Dec-02
6	110' Deck Barge "YFN 321"	31 45.379	-80 36.700	Jun-77	30	3-5 Subway Cars	31 45.419	-80 36.054	Dec-02
7	180' Dredge "Henry Bacon"	31 45.385	-80 36.543	Aug-78	31	Subway Car	31 45.415	-80 36.054	Dec-02
8	100' Tug "Senasqua" YTM 523	31 45.030	-80 36.721	Jul-85	32	Subway Car	31 45.413	-80 36.046	Dec-02
9	55' Tug "Delta Diamond"	31 44.948	-80 36.405	Dec-88	33	Subway Car	31 45.415	-80 36.037	Dec-02
10	M-60 Battle Tanks	31 45.492	-80 35.595	Aug-95	34	Subway Car	31 45.411	-80 36.038	Dec-02
11	M-60 Battle Tanks	31 45.515	-80 35.539	Aug-95	35	Subway Car	31 45.405	-80 36.040	Dec-02
12	M-60 Battle Tanks	31 45.319	-80 35.586	Aug-95	36	Subway Car	31 45.399	-80 36.040	Dec-02
13	M-60 Battle Tanks	31 45.325	-80 35.576	Aug-95	37	Subway Car	31 45.404	-80 36.033	Dec-02
14	M-60 Battle Tanks	31 45.133	-80 35.573	Aug-95	38	Subway Car	31 45.406	-80 36.028	Dec-02
15	M-60 Battle Tanks	31 44.938	-80 35.538	Aug-95	39	Subway Car	31 45.408	-80 36.025	Dec-02
16	M-60 Battle Tanks	31 44.928	-80 35.546	Aug-95	40	3-4 Subway Cars	31 45.408	-80 36.036	Unknown
17	M-60 Battle Tanks	31 44.902	-80 35.553	Aug-95	41	Subway Car	31 45.388	-80 36.023	Unknown
18	1 M-60 Battle Tank	31 44.462	-80 35.300	Aug-95	42	Subway Car	31 45.411	-80 35.988	Unknown
19	M-60 Battle Tanks	31 44.471	-80 35.306	Aug-95	43	100' Tug "Reid McAllister"	31 44.400	-80 35.900	Oct-04
20	M-60 Battle Tanks	31 44.465	-80 35.302	Aug-95	44	100' Tug "Barbara McAllister"	31 44.219	-80 35.430	Oct-04
21	Pallet Balls	31 45.721	-80 34.960	Mar-98	45	38' Sailboat	31 44.587	-80 36.645	May-08
22	Pallet Balls	31 45.504	-80 34.942	Mar-98	46	65' Steel Vessel	31 44.559	-80 36.639	May-08
23	Pallet Balls	31 45.492	-80 34.858	Mar-98	47	85' Tug "Jupiter"	31 44.557	-80 36.641	May-08
24	1 Subway Car	31 45.441	-80 36.016	Dec-02					

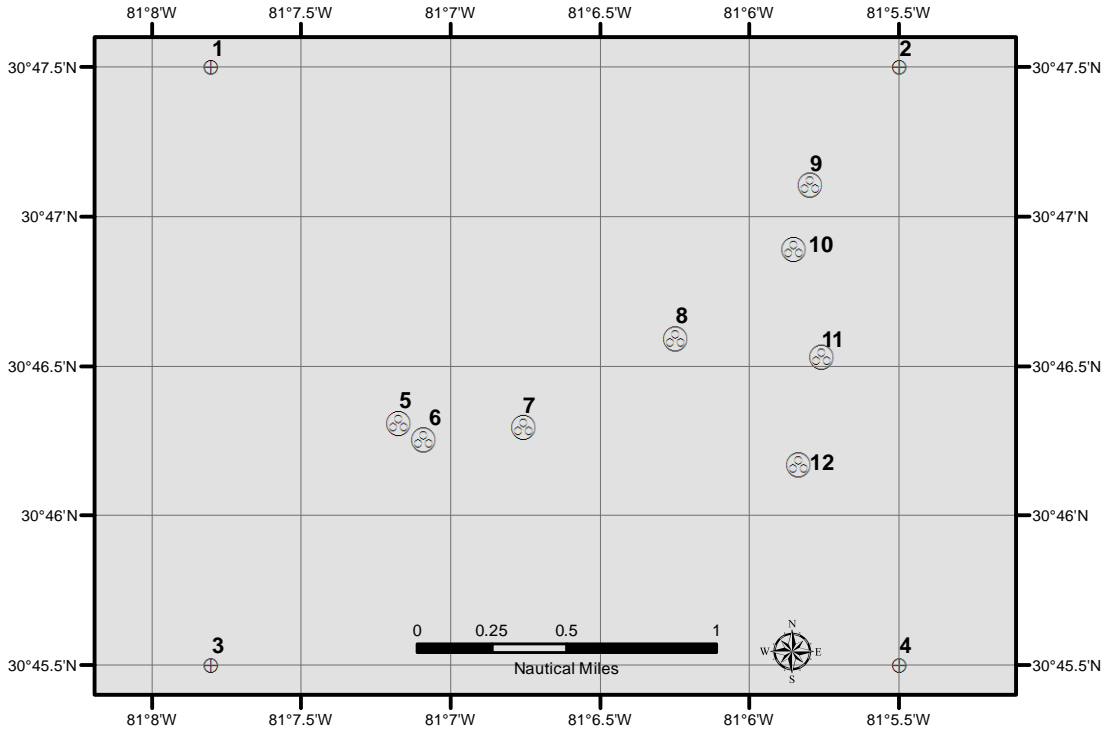
# Georgia Offshore Artificial Reef MRY

18 nm East of Cumberland Island

Depth: 50 - 60 feet



www.CoastalGaDNR.com



Label	Description	Latitude	Longitude	Deploy Date
1	Corner of Reef Area	30 47.500	-81 07.800	May-97
2	Corner of Reef Area	30 47.500	-81 05.500	May-97
3	Corner of Reef Area	30 45.500	-81 07.800	May-97
4	Corner of Reef Area	30 45.500	-81 05.500	May-97
5	Pallet Balls	30 46.310	-81 07.172	Jun-98
6	Pallet Balls	30 46.255	-81 07.091	Jun-98
7	Pallet Balls	30 46.295	-81 06.757	Jun-98
8	Pallet Balls	30 46.591	-81 06.248	Apr-00
9	Pallet Balls	30 47.104	-81 05.798	Apr-00
10	Pallet Balls	30 46.890	-81 05.855	Apr-00
11	Modified Pallet Balls	30 46.532	-81 05.760	May-01
12	Modified Pallet Balls	30 46.172	-81 05.837	May-01

Updated  
12/05/2016

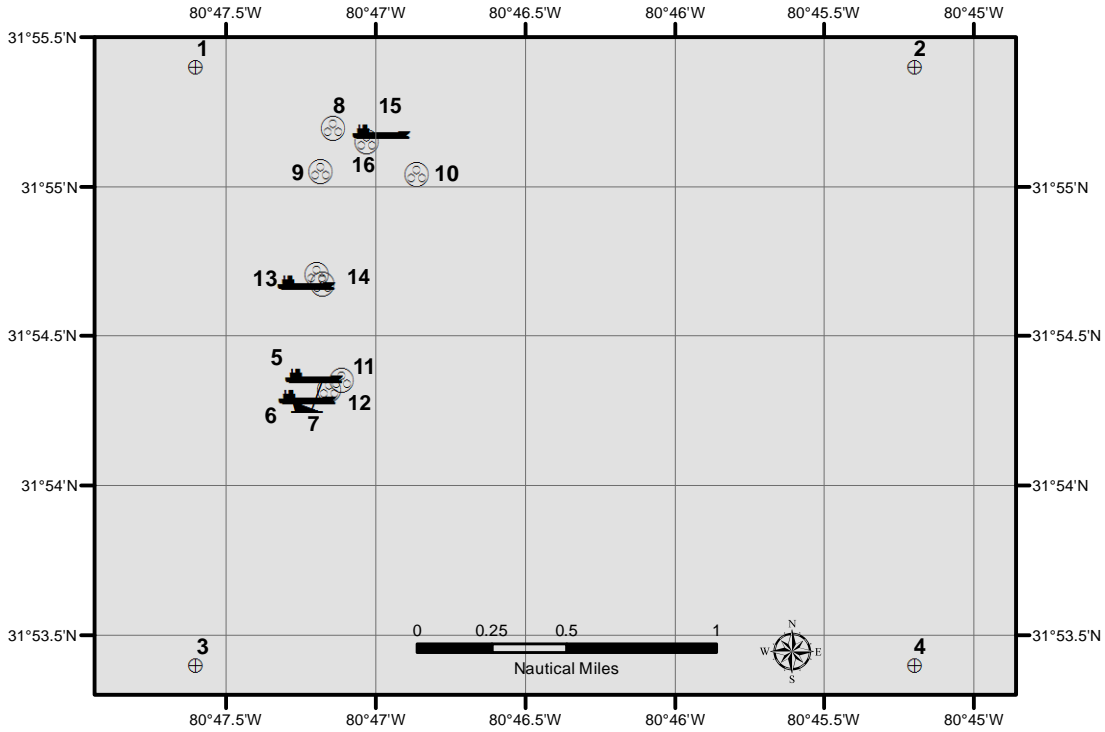
# Georgia Offshore Artificial Reef SAV

6 nm Southeast of Tybee Island

Depth: 30 - 40 feet



[www.CoastalGaDNR.com](http://www.CoastalGaDNR.com)



Label	Description	Latitude	Longitude	Deploy Date
1	Corner of Reef Area	31 55.400	-80 47.600	Feb-90
2	Corner of Reef Area	31 55.400	-80 45.200	Feb-90
3	Corner of Reef Area	31 53.400	-80 47.600	Feb-90
4	Corner of Reef Area	31 53.400	-80 45.200	Feb-90
5	90' Gravel Barge "Latex 118"	31 54.370	-80 47.207	Mar-91
6	100' Gravel Barge "Latex 112" w Work Boat	31 54.299	-80 47.229	Jan-92
7	34' Harbor Tug "Thunderbolt"	31 54.299	-80 47.229	Jan-92
8	Concrete Culvert	31 55.196	-80 47.142	Jan-01
9	Concrete Culvert	31 55.051	-80 47.182	Jan-01
10	Concrete Culvert	31 55.042	-80 46.863	Jan-01
11	Concrete Culvert	31 54.352	-80 47.113	Jun-01
12	Concrete Culvert	31 54.322	-80 47.153	Jun-01
13	110' Deck Barge "Myrick Marine"	31 54.681	-80 47.230	Feb-14
14	Culverts, Coops, Steel Structures	31 54.674	-80 47.178	Jun-14
15	110' Barge with Cages	31 55.184	-80 46.981	Jun-15
16	Poultry Transport Cages	31 55.150	-80 47.029	Sep-15
17	Poultry Transport Cages, Concrete Culvert & Boxes	31 54.705	-80 47.195	Jun-16

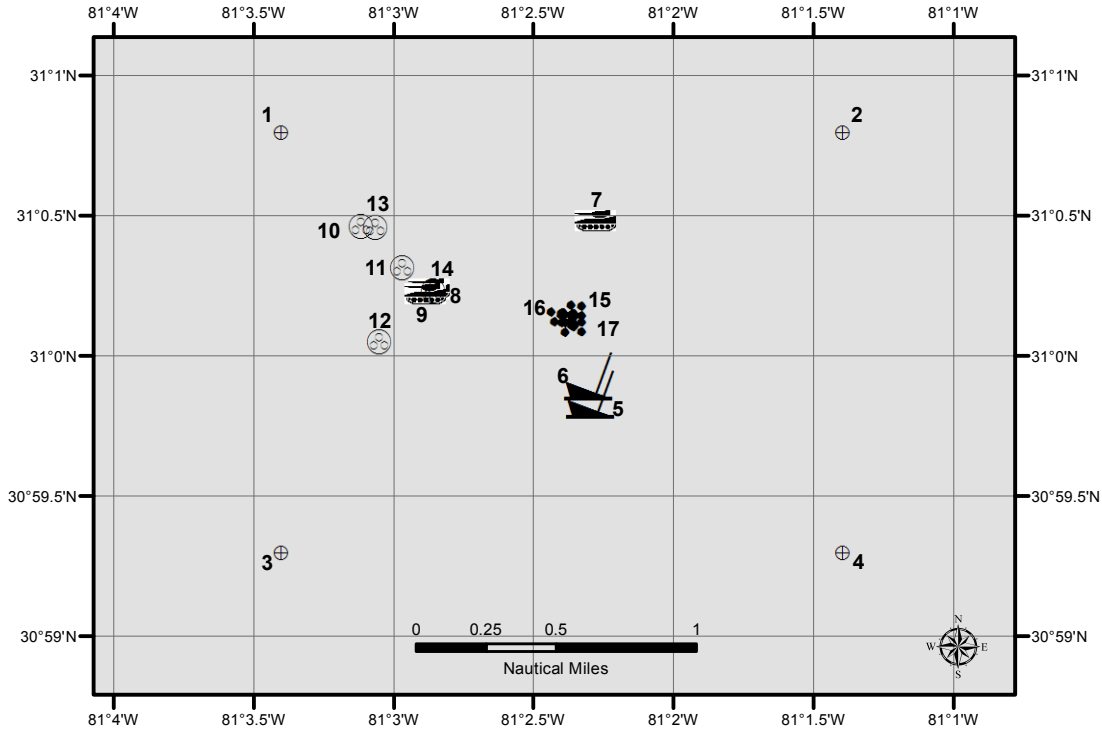
# Georgia Offshore Artificial Reef SFC

18 nm East of Little Cumberland Island



Depth: 45 - 55 feet

[www.CoastalGaDNR.com](http://www.CoastalGaDNR.com)



Label	Description	Latitude	Longitude	Deploy Date
1	Corner of Reef Area	31 00.800	-81 03.400	Apr-93
2	Corner of Reef Area	31 00.800	-81 01.400	Apr-93
3	Corner of Reef Area	30 59.300	-81 03.400	Apr-93
4	Corner of Reef Area	30 59.300	-81 01.400	Apr-93
5	55' LCM "Optimist"	30 59.862	-81 02.298	Mar-83
6	55' LCM "Scalper"	30 59.928	-81 02.308	Apr-84
7	1 M-60 Battle Tank	31 00.483	-81 02.283	Aug-95
8	1 M-60 Battle Tank w Ultra Balls & Culvert	31 00.240	-81 02.874	Aug-95
9	3 M-60 Battle Tanks	31 00.224	-81 02.890	Aug-95
10	Modified Pallet Balls	31 00.317	-81 02.968	Apr-01
11	Modified Pallet Balls	31 00.463	-81 03.116	Apr-01
12	Modified Pallet Balls	31 00.050	-81 03.050	Apr-01
13	Ultra Balls	31 00.460	-81 03.065	Aug-02
14	Ultra Balls / Concrete Pipe	31 00.234	-81 02.859	Aug-02
15	Bridge Rubble	31 00.151	-81 02.362	Dec-03
16	Bridge Rubble	31 00.153	-81 02.398	Jan-04
17	Bridge Rubble	31 00.116	-81 02.361	Jan-04

Updated  
05/24/2017

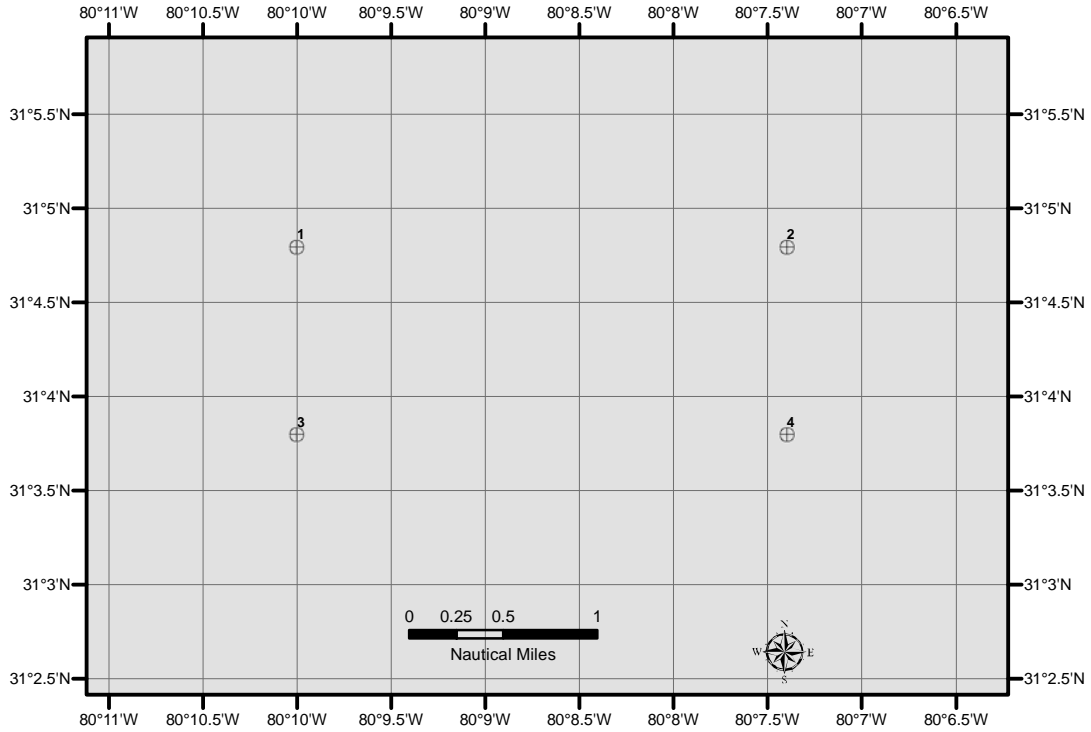
# Georgia Offshore Artificial Reef TW



63 nm East of Jekyll Island

Depth: 120 - 130 feet

[www.CoastalGaDNR.com](http://www.CoastalGaDNR.com)



Label	Description	Latitude	Longitude	Deploy Date
1	Corner of Reef Area	31 04.800	-80 10.000	Nov-05
2	Corner of Reef Area	31 04.800	-80 07.400	Nov-05
3	Corner of Reef Area	31 03.800	-80 10.000	Nov-05
4	Corner of Reef Area	31 03.800	-80 07.400	Nov-05

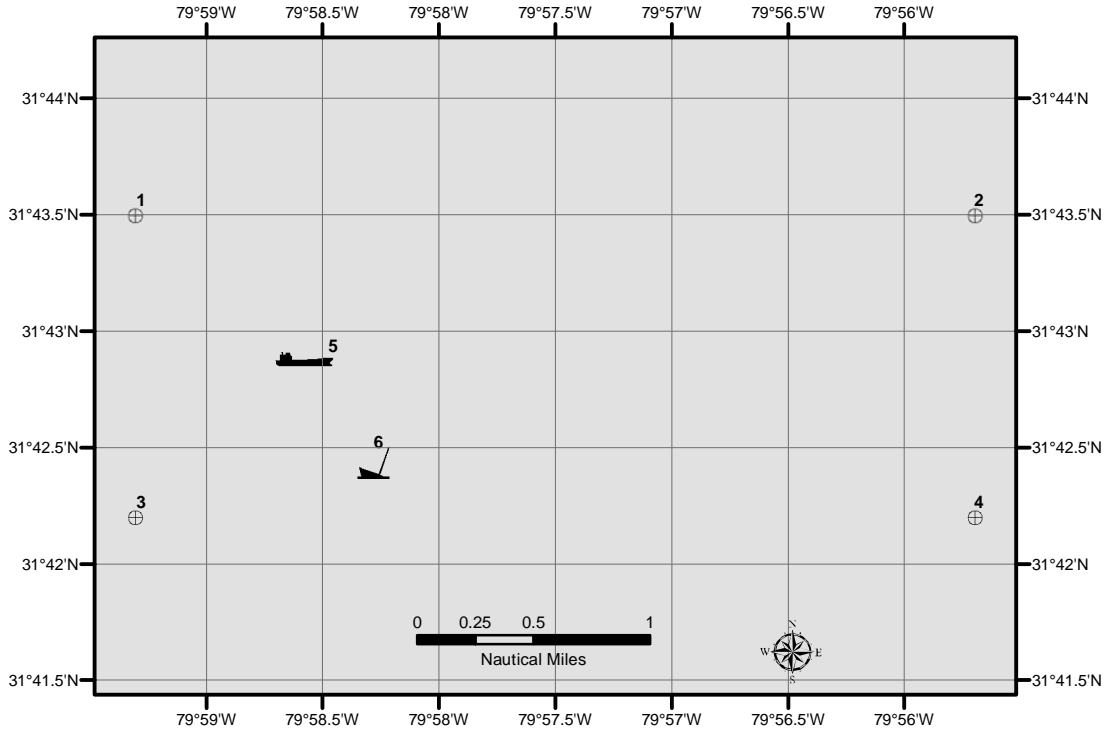
# Georgia Offshore Artificial Reef WW

50 nm Southeast of Wassaw Island



Depth: 120 - 130 feet

[www.CoastalGaDNR.com](http://www.CoastalGaDNR.com)



Label	Description	Latitude	Longitude	Deploy Date
1	Corner of Reef Area	31 43.500	-79 59.300	Dec-98
2	Corner of Reef Area	31 43.500	-79 55.700	Dec-98
3	Corner of Reef Area	31 42.200	-79 59.300	Dec-98
4	Corner of Reef Area	31 42.200	-79 55.700	Dec-98
5	195' Hopper Barge	31 42.878	-79 58.577	Aug-99
6	40' Tug "Semarca 40"	31 42.434	-79 58.281	Oct-00

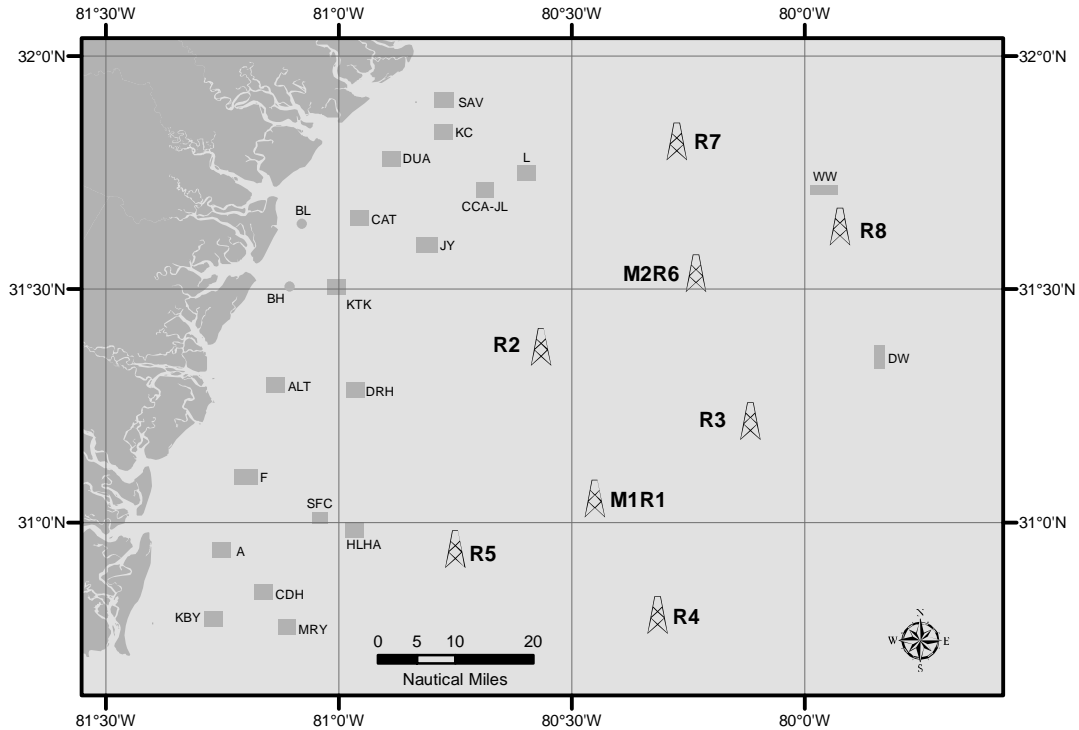


# Georgia Offshore Artificial Reef Navy Towers



30 - 60 nm Offshore

www.CoastalGaDNR.com



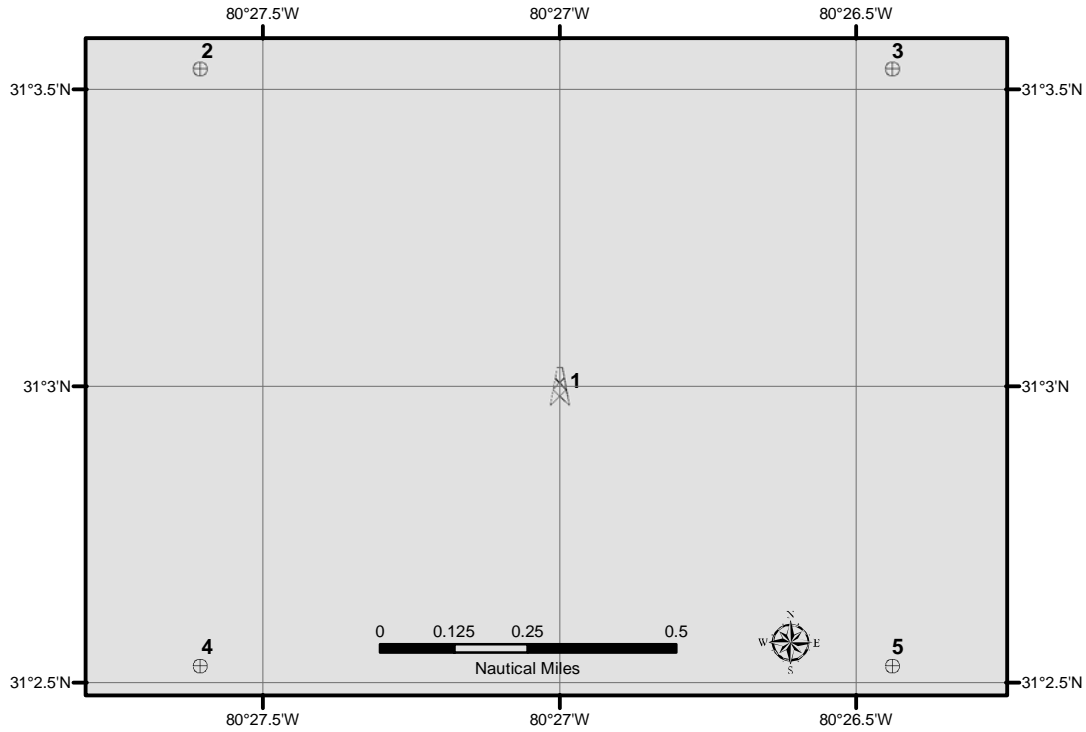
Label	Description	Latitude	Longitude	Deploy Date	Label	Description	Latitude	Longitude	Deploy Date
M1R1	Navy Tower "M1R1"	31 03.000	-80 27.000	Jul-11	R4	Navy Tower "R4"	30 48.000	-80 19.000	Jul-11
2	NW Corner of Permitted Reef Area	31 03.535	-80 27.605	Jul-11	2	NW Corner of Permitted Reef Area	30 48.625	-80 19.515	Jul-11
3	NE Corner of Permitted Reef Area	31 03.535	-80 26.440	Jul-11	3	NE Corner of Permitted Reef Area	30 48.625	-80 18.350	Jul-11
4	SW Corner of Permitted Reef Area	31 02.530	-80 27.605	Jul-11	4	SW Corner of Permitted Reef Area	30 47.630	-80 19.515	Jul-11
5	SE Corner of Permitted Reef Area	31 02.530	-80 26.440	Jul-11	5	SE Corner of Permitted Reef Area	30 47.630	-80 18.350	Jul-11
M2R6	Navy Tower "M2R6"	31 32.000	-80 14.000	Jul-11	R5	Navy Tower "R5"	30 56.500	-80 45.000	Jul-11
2	NW Corner of Permitted Reef Area	31 32.600	-80 14.575	Jul-11	2	NW Corner of Permitted Reef Area	30 56.830	-80 45.635	Jul-11
3	NE Corner of Permitted Reef Area	31 32.600	-80 13.415	Jul-11	3	NE Corner of Permitted Reef Area	30 56.830	-80 44.470	Jul-11
4	SW Corner of Permitted Reef Area	31 31.610	-80 14.575	Jul-11	4	SW Corner of Permitted Reef Area	30 55.830	-80 45.635	Jul-11
5	SE Corner of Permitted Reef Area	31 31.610	-80 13.415	Jul-11	5	SE Corner of Permitted Reef Area	30 55.830	-80 44.470	Jul-11
R2	Navy Tower "R2"	31 22.500	-80 34.000	Jul-11	R7	Navy Tower "R7"	31 49.000	-80 16.500	Jul-11
2	NW Corner of Permitted Reef Area	31 22.975	-80 34.700	Jul-11	2	NW Corner of Permitted Reef Area	31 49.375	-80 16.960	Jul-11
3	NE Corner of Permitted Reef Area	31 22.975	-80 33.510	Jul-11	3	NE Corner of Permitted Reef Area	31 49.375	-80 15.795	Jul-11
4	SW Corner of Permitted Reef Area	31 21.975	-80 34.700	Jul-11	4	SW Corner of Permitted Reef Area	31 48.390	-80 16.960	Jul-11
5	SE Corner of Permitted Reef Area	31 21.975	-80 33.510	Jul-11	5	SE Corner of Permitted Reef Area	31 48.390	-80 15.795	Jul-11
R3	Navy Tower "R3"	31 13.000	-80 07.000	Jul-11	R8	Navy Tower "R8"	31 38.000	-79 55.500	Jul-11
2	NW Corner of Permitted Reef Area	31 13.540	-80 07.615	Jul-11	2	NW Corner of Permitted Reef Area	31 38.505	-79 56.060	Jul-11
3	NE Corner of Permitted Reef Area	31 13.540	-80 06.450	Jul-11	3	NE Corner of Permitted Reef Area	31 38.505	-79 54.895	Jul-11
4	SW Corner of Permitted Reef Area	31 12.570	-80 07.615	Jul-11	4	SW Corner of Permitted Reef Area	31 37.515	-79 56.060	Jul-11
5	SE Corner of Permitted Reef Area	31 12.570	-80 06.450	Jul-11	5	SE Corner of Permitted Reef Area	31 37.515	-79 54.895	Jul-11

# Navy Tactical AirCrew Training System (TACTS) Towers M1R1

50 nm East of Jekyll Island

Depth: 102 feet

[www.CoastalGaDNR.com](http://www.CoastalGaDNR.com)



Label	Description	Latitude	Longitude	Deploy Date
1	Navy Tower "M1R1"	31 03.000	-80 27.000	Jul-11
2	NW Corner of Permitted Reef Area	31 03.535	-80 27.605	Jul-11
3	NE Corner of Permitted Reef Area	31 03.535	-80 26.440	Jul-11
4	SW Corner of Permitted Reef Area	31 02.530	-80 27.605	Jul-11
5	SE Corner of Permitted Reef Area	31 02.530	-80 26.440	Jul-11

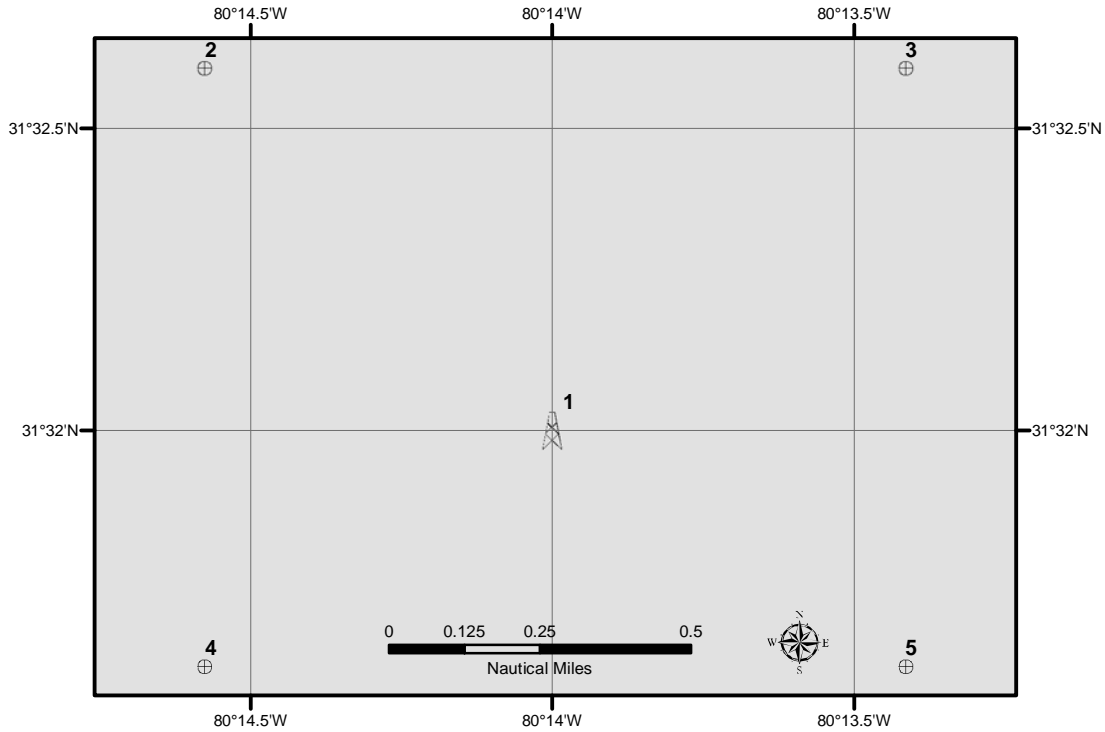
# Navy Tactical AirCrew Training System (TACTS) Towers M2R6

49 nm East of Blackbeard Island



Depth: 102 feet

[www.CoastalGaDNR.com](http://www.CoastalGaDNR.com)



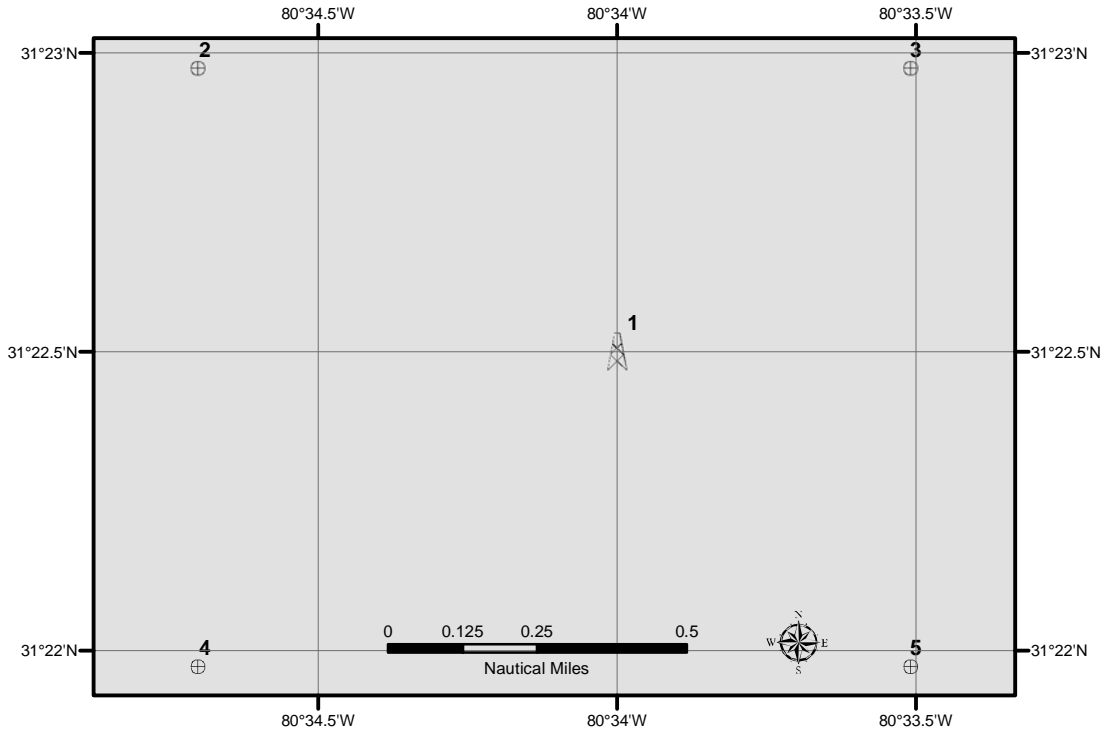
Label	Description	Latitude	Longitude	Deploy Date
1	Navy Tower "M2R6"	31 32.000	-80 14.000	Jul-11
2	NW Corner of Permitted Reef Area	31 32.600	-80 14.575	Jul-11
3	NE Corner of Permitted Reef Area	31 32.600	-80 13.415	Jul-11
4	SW Corner of Permitted Reef Area	31 31.610	-80 14.575	Jul-11
5	SE Corner of Permitted Reef Area	31 31.610	-80 13.415	Jul-11

# Navy Tactical AirCrew Training System (TACTS) Towers R2

38 nm East of Sapelo Island

Depth: 72 feet

[www.CoastalGaDNR.com](http://www.CoastalGaDNR.com)



Label	Description	Latitude	Longitude	Deploy Date
1	Navy Tower "R2"	31 22.500	-80 34.000	Jul-11
2	NW Corner of Permitted Reef Area	31 22.975	-80 34.700	Jul-11
3	NE Corner of Permitted Reef Area	31 22.975	-80 33.510	Jul-11
4	SW Corner of Permitted Reef Area	31 21.975	-80 34.700	Jul-11
5	SE Corner of Permitted Reef Area	31 21.975	-80 33.510	Jul-11

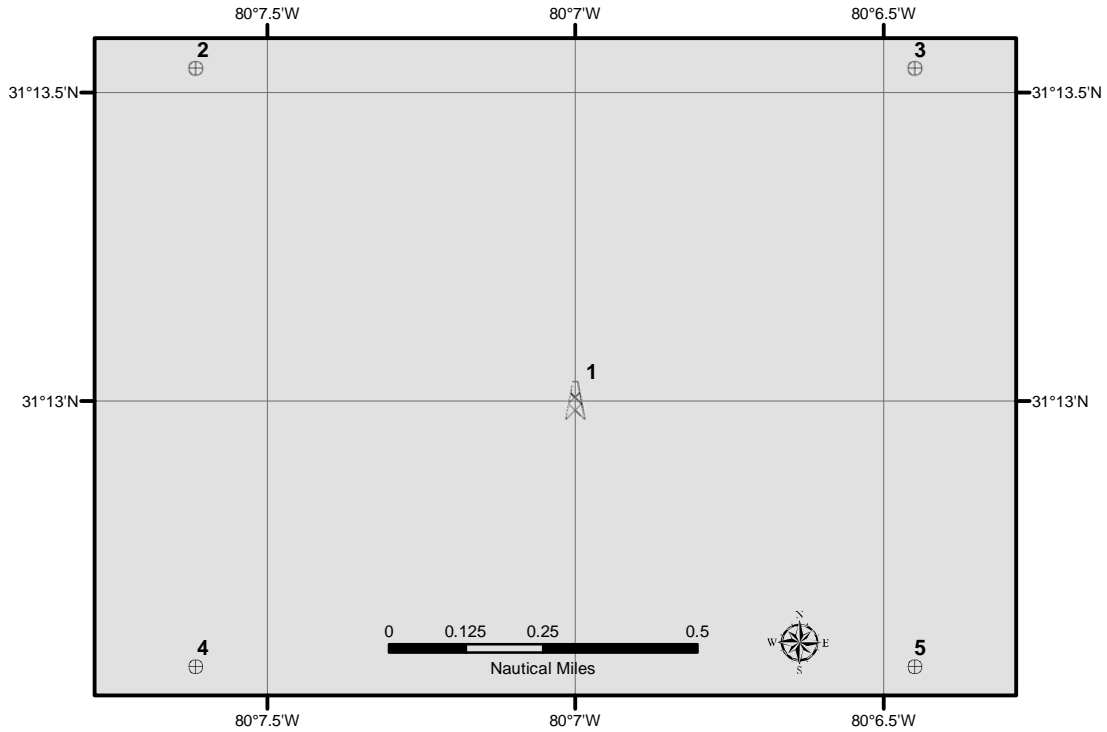
# Navy Tactical AirCrew Training System (TACTS) Towers R3

62 nm East of St Simons Island



Depth: 102 feet

[www.CoastalGaDNR.com](http://www.CoastalGaDNR.com)



Label	Description	Latitude	Longitude	Deploy Date
1	Navy Tower "R3"	31 13.000	-80 07.000	Jul-11
2	NW Corner of Permitted Reef Area	31 13.540	-80 07.615	Jul-11
3	NE Corner of Permitted Reef Area	31 13.540	-80 06.450	Jul-11
4	SW Corner of Permitted Reef Area	31 12.570	-80 07.615	Jul-11
5	SE Corner of Permitted Reef Area	31 12.570	-80 06.450	Jul-11

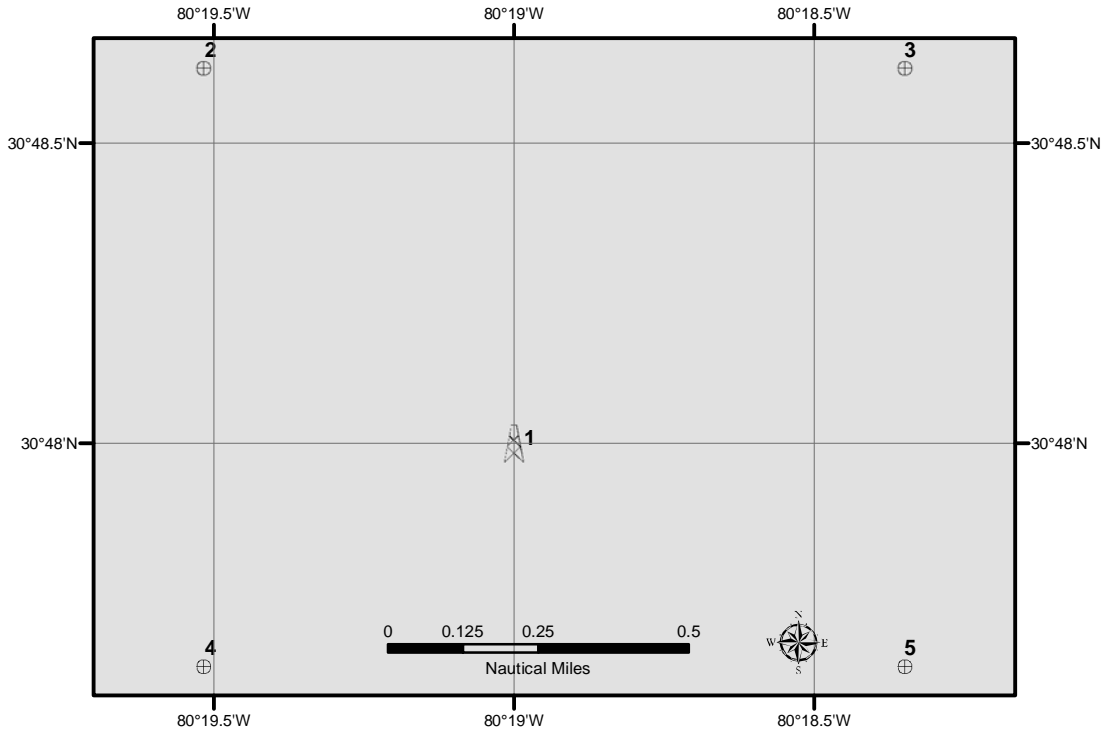
# Navy Tactical AirCrew Training System (TACTS) Towers R4

59 nm East of Cumberland Island



Depth: 60 feet

[www.CoastalGaDNR.com](http://www.CoastalGaDNR.com)



Label	Description	Latitude	Longitude	Deploy Date
1	Navy Tower "R4"	30 48.000	-80 19.000	Jul-11
2	NW Corner of Permitted Reef Area	30 48.625	-80 19.515	Jul-11
3	NE Corner of Permitted Reef Area	30 48.625	-80 18.350	Jul-11
4	SW Corner of Permitted Reef Area	30 47.630	-80 19.515	Jul-11
5	SE Corner of Permitted Reef Area	30 47.630	-80 18.350	Jul-11

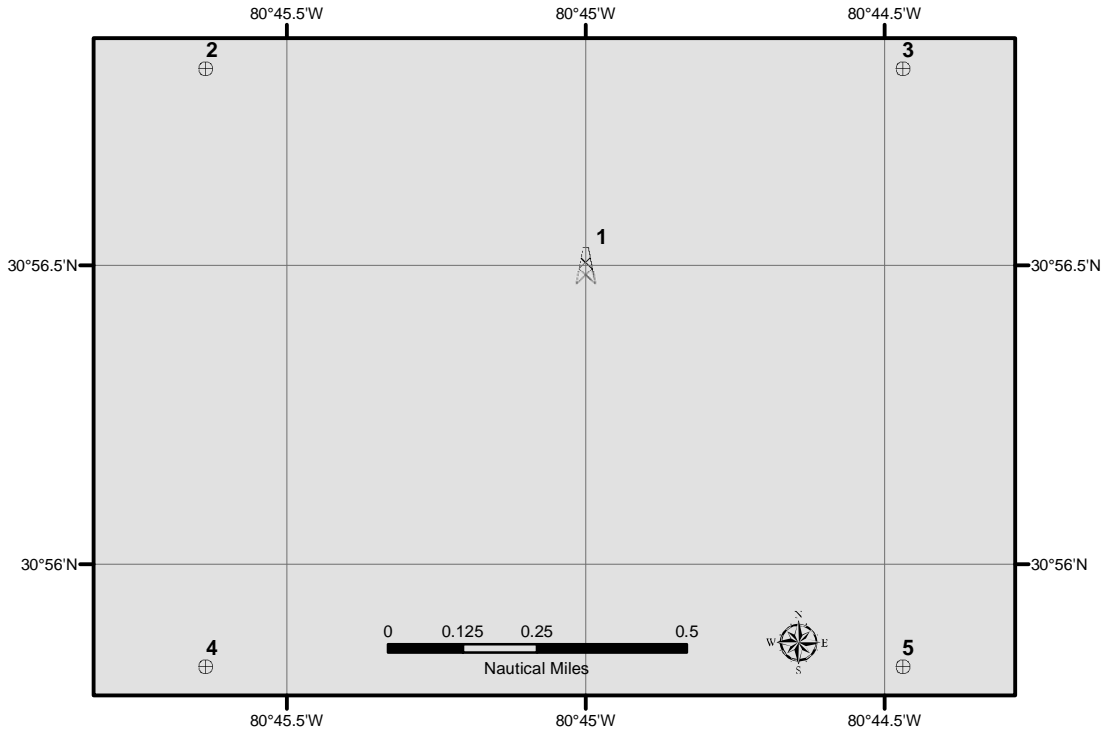
# Navy Tactical AirCrew Training System (TACTS) Towers R5

34 nm East of Cumberland Island



Depth: 72 feet

[www.CoastalGaDNR.com](http://www.CoastalGaDNR.com)



Label	Description	Latitude	Longitude	Deploy Date
1	Navy Tower "R5"	30 56.500	-80 45.000	Jul-11
2	NW Corner of Permitted Reef Area	30 56.830	-80 45.635	Jul-11
3	NE Corner of Permitted Reef Area	30 56.830	-80 44.470	Jul-11
4	SW Corner of Permitted Reef Area	30 55.830	-80 45.635	Jul-11
5	SE Corner of Permitted Reef Area	30 55.830	-80 44.470	Jul-11

Updated  
12/04/2015

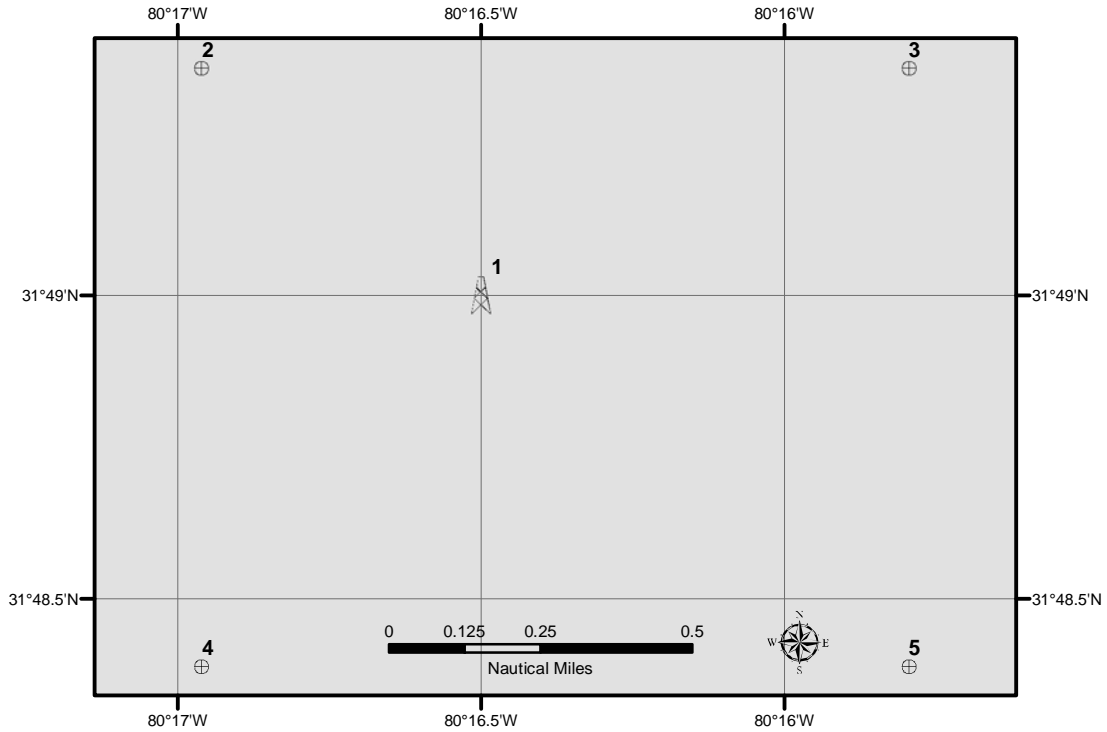
# Navy Tactical AirCrew Training System (TACTS) Towers R7

40 nm East of Ossabaw Island



Depth: 84 feet

[www.CoastalGaDNR.com](http://www.CoastalGaDNR.com)



Label	Description	Latitude	Longitude	Deploy Date
1	Navy Tower "R7"	31 49.000	-80 16.500	Jul-11
2	NW Corner of Permitted Reef Area	31 49.375	-80 16.960	Jul-11
3	NE Corner of Permitted Reef Area	31 49.375	-80 15.795	Jul-11
4	SW Corner of Permitted Reef Area	31 48.390	-80 16.960	Jul-11
5	SE Corner of Permitted Reef Area	31 48.390	-80 15.795	Jul-11



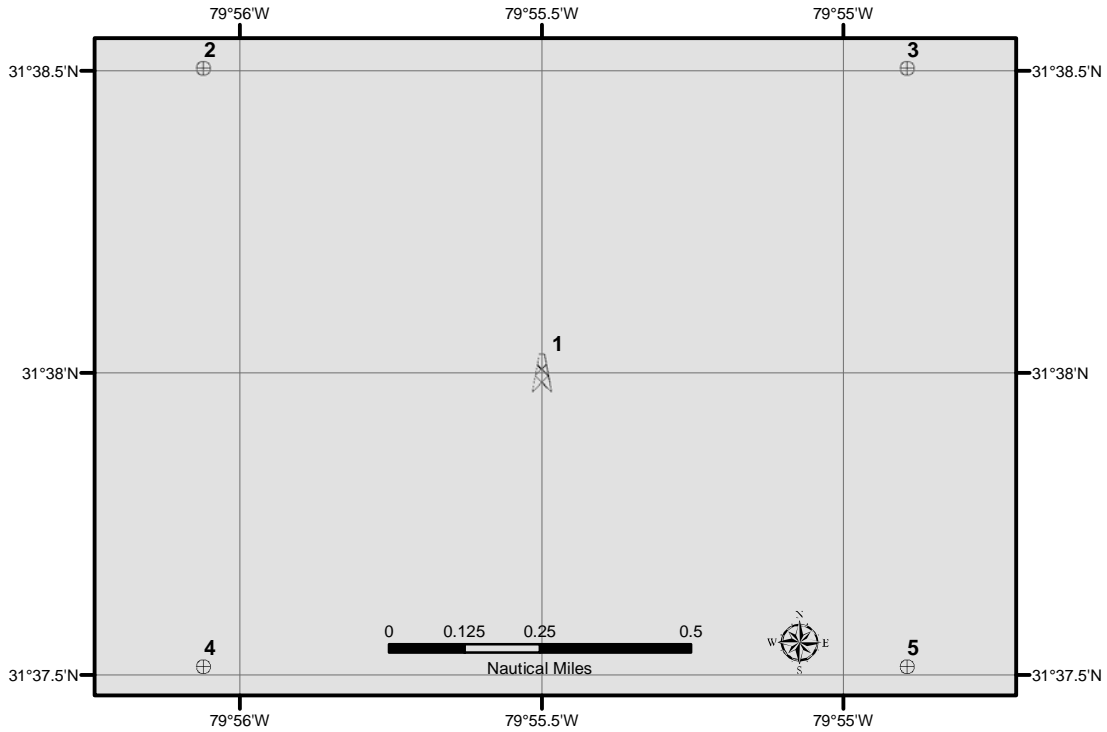
# Navy Tactical AirCrew Training System (TACTS) Towers R8

64 nm East of St Catherine Island



Depth: 144 feet

[www.CoastalGaDNR.com](http://www.CoastalGaDNR.com)



Label	Description	Latitude	Longitude	Deploy Date
1	Navy Tower "R8"	31 38.000	-79 55.500	Jul-11
2	NW Corner of Permitted Reef Area	31 38.505	-79 56.060	Jul-11
3	NE Corner of Permitted Reef Area	31 38.505	-79 54.895	Jul-11
4	SW Corner of Permitted Reef Area	31 37.515	-79 56.060	Jul-11
5	SE Corner of Permitted Reef Area	31 37.515	-79 54.895	Jul-11