

# Guide to Fishing the Lower Conasauga River



"takemefishing"



**The Lower Conasauga River** is that portion of the river running southward from the Tennessee/Georgia state line to the confluence with the Coosawattee River near Calhoun. The river habitat changes dramatically during this 62 miles run. The upper stretch is relatively clear and contains cool water species such as redeye bass. The lower portion is not as clear and contains species more typical of big river habitats. The only boat ramp is at Hwy 225 near the river's mouth. Common fish species in this river include: carp, smallmouth buffalo, redhorse suckers, channel catfish, redbreast sunfish, bluegill, longear sunfish, redear sunfish, redeye bass, spotted bass, largemouth bass, black crappie and freshwater drum. Anglers wishing to consume their catch should pay attention to the fish consumption guidelines as described in the sport fishing regulations or at [www.dnr.state.ga.us/dnr/enviro/](http://www.dnr.state.ga.us/dnr/enviro/).

## √ Boating Check List

- Each person on board must have a readily accessible U.S. Coast Guard (USCG) approved Type I, II, III, or V (hybrid) Personal Floatation Device (life jacket) in good condition (no rips/tears). Type V (hybrid) devices are acceptable only when worn and securely fastened. Each vessel, except for Class A vessels, canoes, and kayaks must be equipped with at least one type IV (throwable) device. All children under age 10 must wear an appropriately sized USCG approved life jacket while on a moving boat, whether it is by drifting, sailing, or mechanical power.
- Boats with enclosed areas that may trap gas or vapors are required to be equipped with a USCG approved fire extinguisher.
- Carry your fishing license and boat registration with you.
- Check your boat's trailer, navigation lights, and fuel before leaving home.
- Carry a first aid kit, insect repellent, sunscreen, extra clothing, food, and drinking water.
- Be aware of, and abide by all fishing regulations.
- Tell someone where you are going and when you expect to return.

## BE AN ETHICAL ANGLER!

Ethical anglers fish responsibly, consider the rights of others, portray a positive image, and help to protect and conserve our natural resources. Be an ethical angler, the future depends on it.

### Ethical Anglers:

- # Know and obey the fishing regulations.
- # Keep only the fish they can use and release all others.
- # Pass on the tradition by taking a child fishing.
- # Leave a place cleaner than it was found.
- # Do not transfer fish or plants between bodies of water.
- # Report violations and pollution.
- # Do not litter!
- # Dispose of fishing line properly.
- # Do not trespass.
- # Are courteous of others.
- # Lend a helping hand.

## Fishing Tips

**Bass and bream** are popular quarry from the state line down to near Dalton. This portion of stream is too small for travel by motorboat but is popular for bank and float fishing. Redeye bass are prevalent but spotted bass and largemouth bass are also found. Bream species include longear sunfish, redbreast sunfish, bluegill, shadow bass (rock bass) and redear sunfish.

**Catfish and carp** are found throughout the stream but are most popular in the slower, murkier waters below Dalton. Channel catfish are the most prevalent species but blue catfish, flathead catfish and bullheads can also be found. Anglers fishing for catfish may catch a **lake sturgeon** but they must be released unharmed immediately after being caught. Lake sturgeons are being reintroduced by the DNR into the Coosa River system and cannot be harvested. Sturgeon can be identified by its rounded snout, a toothless mouth on the bottom of its head, four "whiskers" in front of its mouth; bony plates on the side of its body and its shark-like tail. Anglers can help this reintroduction effort by reporting any sturgeon they see by calling the Calhoun Fisheries office at 706-624-1161. More information on this reintroduction project can be found at [www.gofishgeorgia.com](http://www.gofishgeorgia.com)

Some anglers have reported that good numbers of **white bass** can be found on the lower section along with a few **striped bass** during the March and April spawning runs.

## Tips on using the map

- The map is most useful if viewed in color.
- Maps in this series (Coosa, Oostanaula, Etowah, Coosawattee and Conasauga rivers) are of the same scale so they can be pasted together if desired.
- The mileage labels represent distance from the river's mouth.
- Boaters can use a GPS and the following GPS coordinates to estimate their position on the river.





Mile	Lat	Lon	Mile	Lat	Lon
0	N 34 32.598	W 84 54.158	32	N 34 44.535	W 84 51.074
2	N 34 34.281	W 84 54.021	34	N 34 45.336	W 84 52.061
4	N 34 35.394	W 84 55.150	36	N 34 46.708	W 84 52.735
6	N 34 36.115	W 84 56.523	38	N 34 47.220	W 84 51.748
8	N 34 37.176	W 84 55.516	40	N 34 48.093	W 84 50.359
10	N 34 38.396	W 84 54.802	42	N 34 48.879	W 84 51.707
12	N 34 39.877	W 84 55.616	44	N 34 50.081	W 84 51.067
14	N 34 40.701	W 84 56.377	46	N 34 51.196	W 84 50.649
16	N 34 40.742	W 84 54.532	48	N 34 51.603	W 84 49.768
18	N 34 40.155	W 84 53.289	50	N 34 52.756	W 84 49.379
20	N 34 41.352	W 84 54.370	52	N 34 53.923	W 84 49.649
22	N 34 42.387	W 84 56.008	54	N 34 55.020	W 84 50.472
24	N 34 42.670	W 84 54.551	56	N 34 55.918	W 84 49.504
26	N 34 42.882	W 84 52.982	58	N 34 56.467	W 84 48.308
28	N 34 43.085	W 84 51.519	60	N 34 57.180	W 84 47.236
30	N 34 44.236	W 84 52.283	62	N 34 58.408	W 84 46.947

Units are in degrees and decimal minutes

For more fishing information visit the Georgia DNR website at [www.gofishgeorgia.com](http://www.gofishgeorgia.com) or call (706) 624-1161. T.I.P (Turn in Poachers): To report game/fish law violations, fish kills, or hazardous spills: call (800) 241-4113

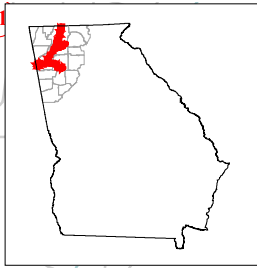
# Conasauga River (N)

## Coosa River Basin

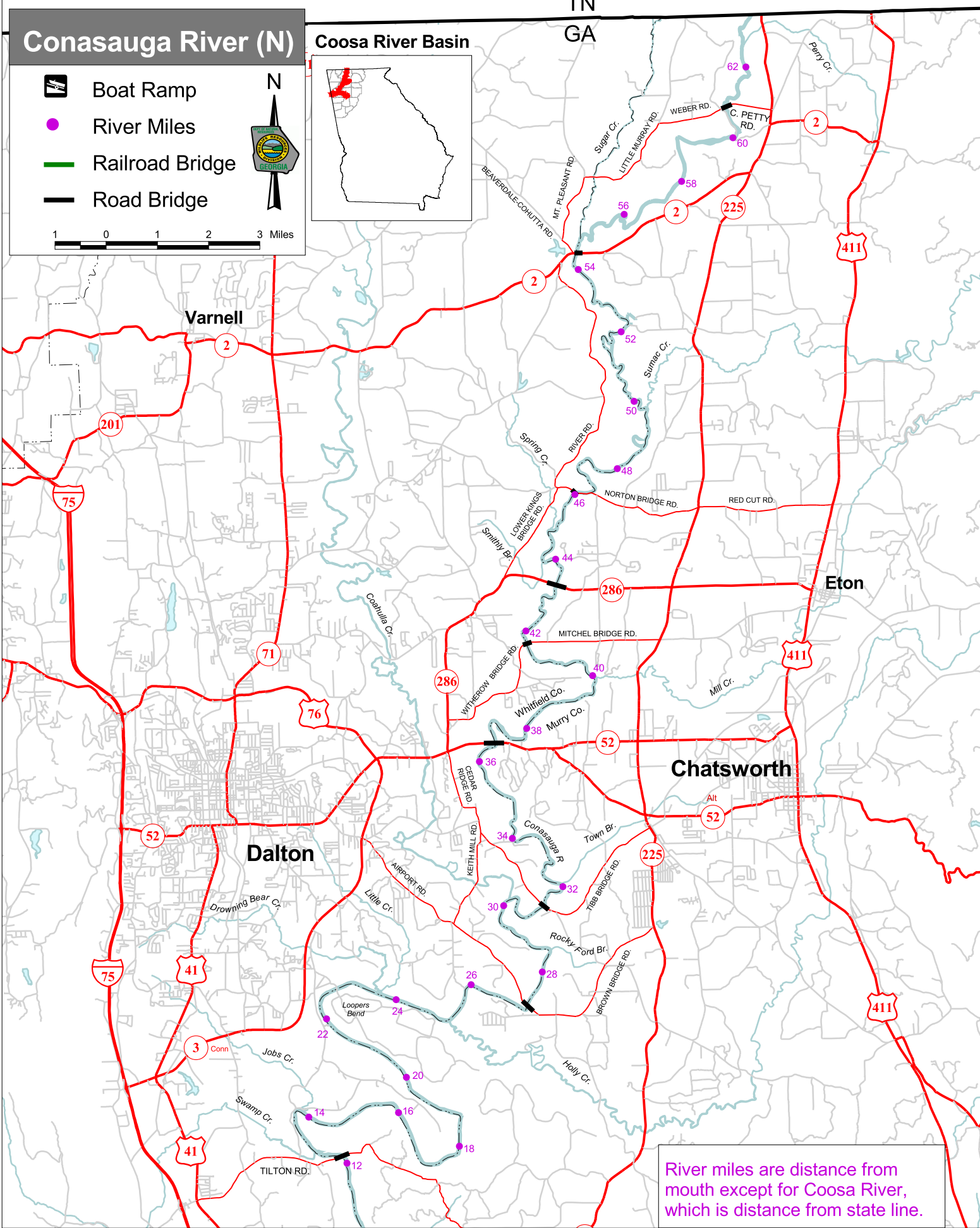
-  Boat Ramp
-  River Miles
-  Railroad Bridge
-  Road Bridge



1 0 1 2 3 Miles







TN  
GA



River miles are distance from mouth except for Coosa River, which is distance from state line.

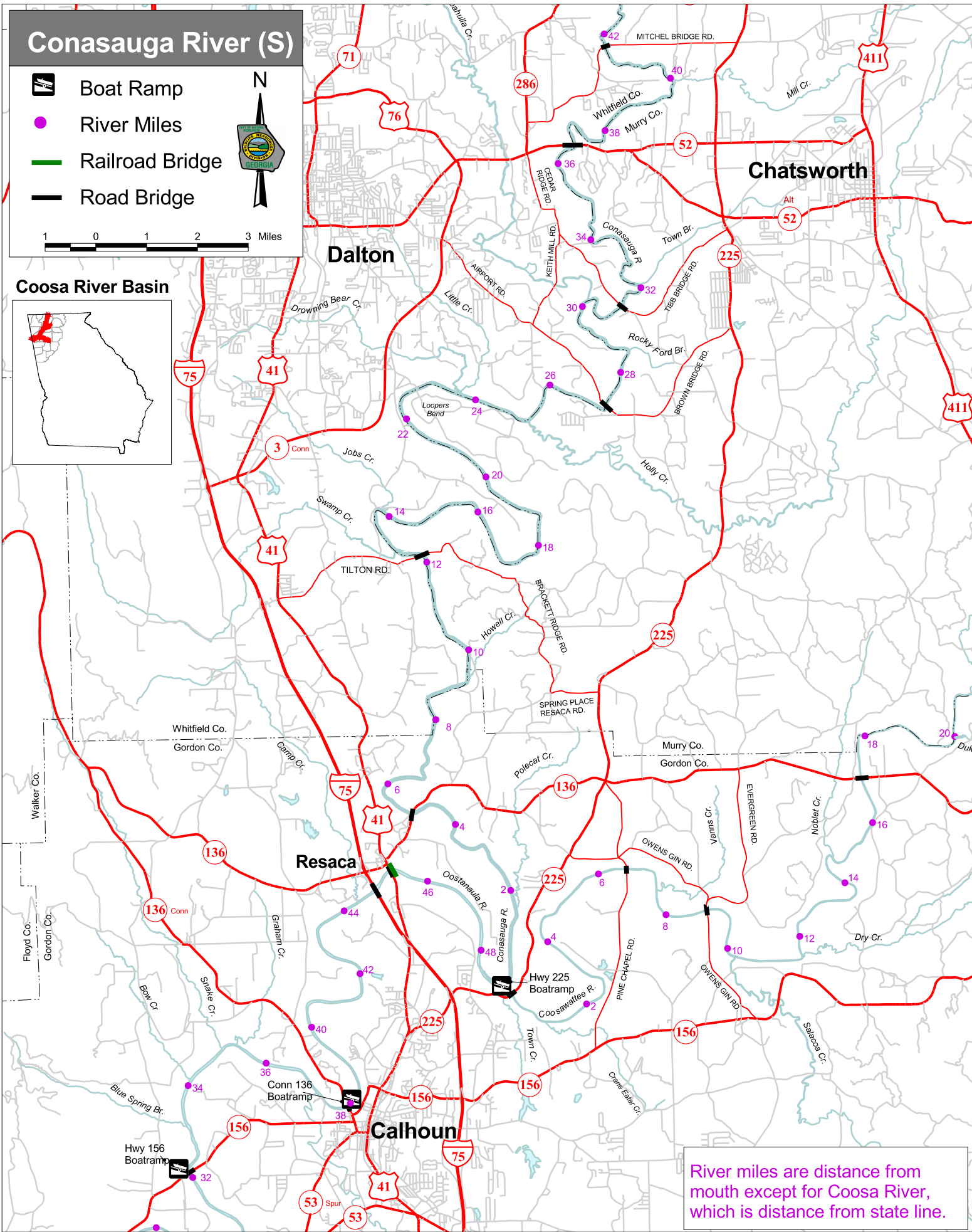
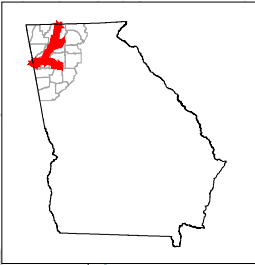
# Conasauga River (S)

-  Boat Ramp
-  River Miles
-  Railroad Bridge
-  Road Bridge



1 0 1 2 3 Miles

## Coosa River Basin



River miles are distance from mouth except for Coosa River, which is distance from state line.