

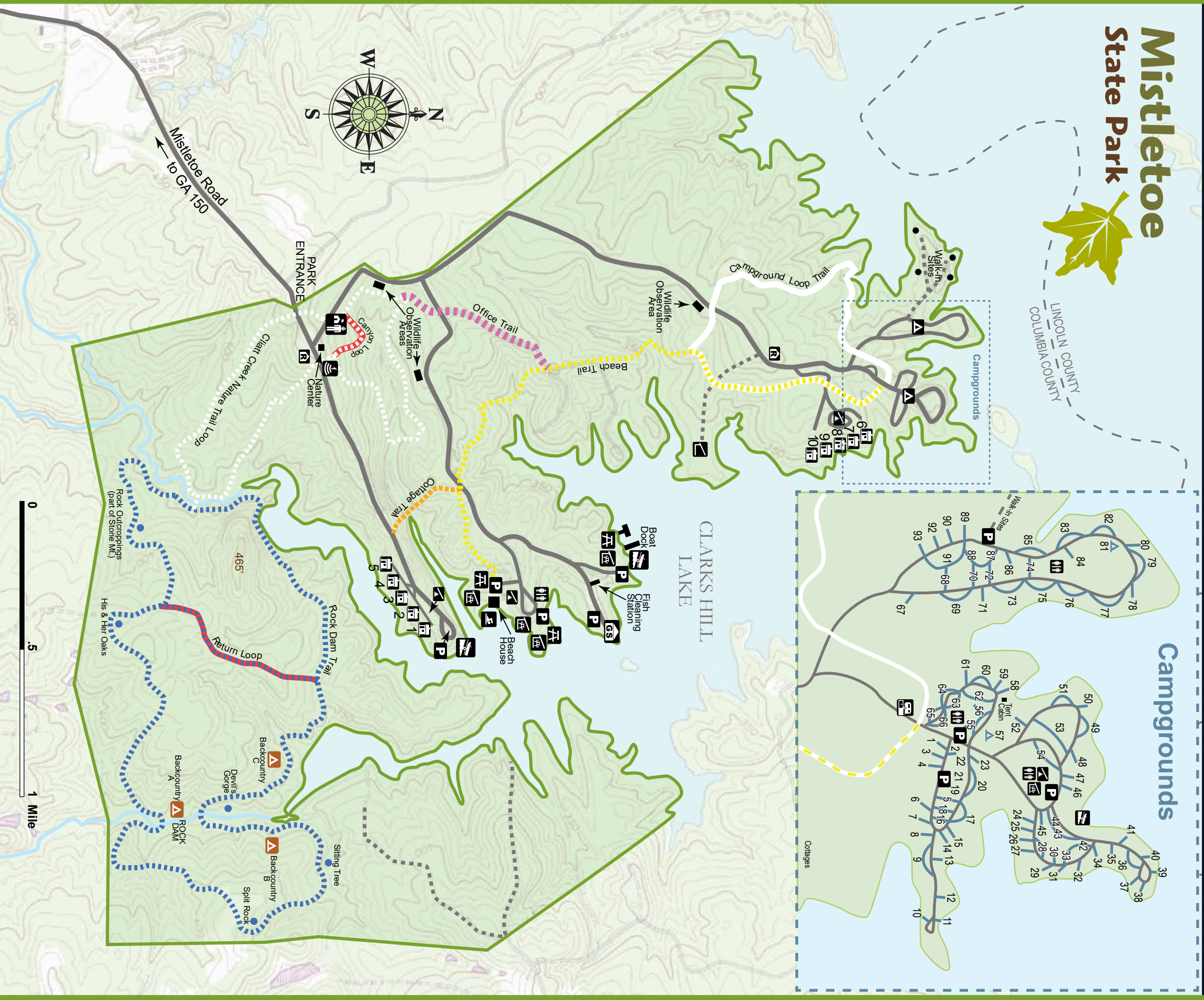
Mistletoe State Park Trail Map

3725 Mistletoe Road, Appling, Georgia 30802 • 706-541-0321 • Reservations: 800-864-7275 • Emergency: 911 • GaStateParks.org/Mistletoe

Mistletoe State Park



LINCOLN COUNTY
COLUMBIA COUNTY



LEGEND

- | | | | | | | | |
|--|----------------------------|--|----------------------------|--|-----------------------|--|--------------------------------|
| | Park Office & Registration | | Cottage | | Pioneer Campground | | Clatts Creek Nature Trail Loop |
| | Parking | | RV & Tent Camping | | Backcountry Campsites | | Canyon Loop Trail |
| | Group Shelter | | Dump Station | | Staff Residence | | Rock Dam Trail |
| | Picnic Shelter | | Comfort Station / Restroom | | Amphitheater | | Return Loop |
| | Picnic Area | | Boat Ramp | | Amphitheater | | Office Trail |
| | Beach Swimming | | Playground | | Amphitheater | | Cottage Trail |
| | | | | | | | Beach Trail |
| | | | | | | | Campground Loop Trail |



Located on 72,000-acre Clarks Hill Lake near Augusta, this park is one of the finest bass fishing spots in the nation. In summer, you can cool down at the beach, or throughout the year enjoy 15 miles of shaded nature trails. Why not rent a canoe or enjoy three wildlife observation areas located along park road? Four playgrounds and a hands-on nature center provide fun for the whole family. Ten fully equipped cottages are lake-front and five are log cabins. The campground is on a peninsula, offering spectacular views of both sunset and sunrise over open water. A four-bed tent cabin with electricity and water faces the lake.

Activities & Facilities

Camping - Mistletoe has 93 campsites with water and electrical hook-ups. Three comfort stations with hot showers and flush toilets are conveniently located in the campground. Four walk-in campsites are available with picnic tables, lantern hooks and pit privies. A pioneer camp with five tent sites, a shelter, fire-circle, water, and two privies is available for supervised groups. Three backcountry campsites are on the Rock Dam Hiking Trail.

Cottages - Ten fully equipped two-bedroom units are available to rent year-round. Units 6-10 are log structures featuring large sleeping lofts.

Picnicking - The large day-use area includes four picnic shelters and an enclosed group shelter and beach house. A fifth picnic shelter is located in the campground. Picnic shelters are reservable and are otherwise available on a first-come, first-serve basis. The beach house is available by reservation only. Please picnic in designated areas only.

Fishing - Clarks Hill Lake is open for legal fishing throughout the year. A courtesy dock and three launching ramps are provided. Persons 16 or older must have a valid Georgia/South Carolina resident/non-resident fishing license.

Boating - Private boats are permitted on reservoir waters without horsepower restrictions. Three boat launching ramps are provided. Water skiing is allowed and all boats must comply with the Georgia and South Carolina Boating Safety Laws. Canoes may be rented at the park office.

ParkPass - A parking fee is required at all state parks and proceeds go toward park maintenance. If you are a frequent visitor, you can save money with an Annual ParkPass or by joining the Friends of Georgia State Parks and get a free ParkPass. The daily ParkPass is valid at all state parks visited that day.

TRAIL DESCRIPTIONS

Each trail is unique. Some have streams and others spectacular ravines, overlooks and lake views. All offer the opportunity to view wildlife. Biking is allowed on trails but is difficult without wide tires. The cottage trail, southeastern parts of the Cliatt Creek Trail and the Rock Dam Trail are most challenging.

There are some obstacles you may encounter on any of these trails. These include exposed rock and tree roots, loose stones and leaf litter, fallen tree limbs, log water bars, uneven surfaces and mud/icing when wet.

Cliatt Creek Nature Trail Loop

This 3.75-mile trail has a maximum grade of 25% in 200 feet. The trail is blazed white. Parking and the trailhead are across from the office next to an information kiosk. The trail soon crosses a paved road, descends to the Cliatt Creek, follows the creek and then ascends and crosses a second paved park road. It continues its upland loop back to the office. This area was originally fields of cotton, corn and tobacco grown in rotation. Now fields are replaced by pines, oaks, sweetgum and beech. Stop to enjoy the cool temperatures and beauty along Cliatt Creek. In spring you may see a rare silky camellia in bloom. Along the uplands section of the trail, you are likely to see deer.

Canyon Trail Loop

This 1/3-mile trail has a maximum grade of 10% in 200 feet. The trail is blazed red and white. This is a loop trail off the Cliatt Creek Trail. Begin on the Cliatt Creek Trail between the office and the nature center. Follow the Cliatt Creek Trail (blazed white) behind the office for 1/10 mile. Watch for the Canyon Trail Loop red and white blazes to your right. Along this loop you'll come to a canyon caused by water run-off from poor farming practices in the 1920s. This is a good spot for a photo and to rest on benches.

Office Trail

This 1/2-mile trail has a maximum grade of 10% in 200 feet. The trail is blazed deep pink. This is a connector trail off the Beach Trail. From the Beach Trail, look for a sign designating a right turn onto the Office Trail. The Office Trail merges with an old dirt road, crosses a paved road and dead ends at the Cliatt Creek Trail (blazed white). Follow the Cliatt Creek Trail 1/4 mile back to the office. The beginning of the Office Trail is in deep woods and a good place to see deer, squirrel, and other woodland animals.

Beach Trail

This 1.9-mile trail has a maximum grade of 20% in 200 feet. The trail is blazed yellow. It begins just southwest of the campground opposite the dump station. Here it is blazed both yellow and white because it runs with the Campground Loop Trail for 3/4 mile. At the 3/4 mile point, the Campground Loop Trail turns right (west, white blaze only) while the Beach Trail (now blazed only yellow) continues straight south and then turns east to the beach. The Beach Trail provides a scenic way to access the beach. It goes through pines and hardwoods, across a bridge, then crosses a paved road and terminates at the beach. You'll catch glimpses of the lake, sharp eyes will spot mistletoe high in trees. This is a good place to look for songbirds and woodland animals.

Campground Loop Trail

This 1.5-mile trail has a maximum grade of 15% in 200 feet. The trail is blazed white. The Trailhead is just southwest of the campground opposite the dump station. Here it is blazed

both yellow and white because it runs with the Beach Trail for 3/4 mile. At the 3/4 mile point, the Campground Loop Trail turns right (west, white blaze only) while the Beach Trail (now blazed only yellow) continues straight. The Campground Loop Trail crosses a paved road and continues through a stand of American holly, descends to the lake, crosses a tributary by footbridge and back up to the campground. This heavily used trail offers opportunities to view both woodland and lakeshore wildlife.

Rock Dam Trail

This 6.25-mile trail has a maximum grade of 25% in 200 feet. The trail is blazed blue. The Rock Dam Trail requires 4 stream crossings and is the park's most challenging trail. To access this trail, start at the parking area across from the office to the left of an information kiosk. Follow the Cliatt Creek Trail (blazed white) across the paved road and descend to the Cliatt Creek. Now look for the Rock Dam Trailhead (blue blaze) on your right. Follow the blue blazes across the Cliatt Creek in a counterclockwise direction. In about 1.5 miles you will come to the intersection with the Rock Dam Return Loop Trail. To return to the office, follow the Return Loop (blazed red and blue) or continue on the Rock Dam Trail across the scenic Rock Dam and back to the office via the Cliatt Creek trail. (see map). The Rock Dam Trail runs into a deep ravine, near the highest point in the park (465 feet), and allows maximum opportunity to see wildlife and wildflowers. Refer to the map frequently and know where you are at all times.

Rock Dam Return Loop Trail

This 1-mile trail has a maximum grade of 15% in 200 feet. The trail is blazed red and blue. This is a shortcut on the Rock Dam Trail. It begins about 1.5 miles from the Rock Dam Trailhead. The Return Loop Trail is an old dirt road. Follow the red and blue blazes (north) and turn left (west) when you see blue blazes on your left. This is a wide trail and you may see plants and animals that prefer woods near open areas. Caution: the old road which makes up the Return Loop Trail continues past the intersection with the north portion of the Rock Dam Trail. If you no longer see red and blue blazes, you have gone too far.

Cottage Trail

This 1/3-mile trail has a maximum grade of 25% in 200 feet. The trail is blazed orange. This is a spur trail to the Beach Trail. From cottages 1-5, follow the paved road toward the park exit. The Cottage Trailhead is about 1/4 mile from the cottages on your right (north). Look for a trail sign and orange blazes. This trail is short but descends steeply to a bridge, across a stream, and up a gentler slope to the beach trail (blazed yellow). Turn right (east) following the yellow Beach Trail to the beach area. From the cottages to the beach is 1 mile one way. The stream crossing is a good place to see wetland animals.

SAFETY TIPS & ETIQUETTE

- Tell someone your itinerary and expected return time.
- Take a map, water, snacks, first aid kit, jacket, flashlight, insect repellent, rain gear, trash bag, cell phone, and whistle. Cell phones may not work in all areas, but if they do, be able to give details about your location. It is a good idea to carry a compass, especially on the more remote trails.
- Be prepared for unexpected rain and wind which can lead to hypothermia. If you get wet or cold, dry off and warm up as quickly as possible.
- Stay on the trails. If you become lost, stay in one location and wait for help. This will make it easier for rescuers to find you.
- Dress in layers and use clothing that wicks moisture away from your body.
- Carry a trash bag and pack out all trash.
- Watch out for poison ivy on the ground and as a vine on trees. Other hazards may include fire ants, wasps/bees, ticks, and copperheads.
- Keep pets on a leash at all times and clean up after them.
- Look but leave artifacts, plants, trees, flowers and wildlife alone. If you get too close to wildlife they may flee. Then they may use up precious energy they need to survive. Leave everything you find on the park for others to enjoy.
- Protect the park and help prevent erosion by staying on marked trails.

CLIMATE DATA FOR APPLING, GEORGIA

Month	Avg. High	Avg. Low	Mean	Avg. Precip.	Record High	Record Low
Jan	54°F	31°F	43°F	4.96 in	81°F (1975)	-4°F (1985)
Feb	59°F	33°F	46°F	4.23 in	83°F (1996)	6°F (1996)
Mar	67°F	40°F	54°F	4.91 in	88°F (1995)	6°F (1980)
Apr	75°F	46°F	61°F	3.37 in	93°F (1986)	22°F (1983)
May	82°F	55°F	69°F	3.48 in	100°F (1962)	32°F (1971)
Jun	88°F	64°F	76°F	4.08 in	103°F (1978)	40°F (1984)
Jul	92°F	68°F	80°F	4.03 in	106°F (1980)	52°F (1983)
Aug	90°F	67°F	78°F	4.09 in	105°F (1980)	52°F (1965)
Sep	85°F	61°F	73°F	3.75 in	102°F (1980)	32°F (1967)
Oct	76°F	47°F	62°F	3.46 in	93°F (1981)	25°F (1987)
Nov	67°F	39°F	53°F	3.24 in	90°F (1961)	13°F (1970)
Dec	57°F	33°F	45°F	3.73 in	80°F (1984)	1°F (1983)