

----- CMPA/Section 10 Line (OHWM)

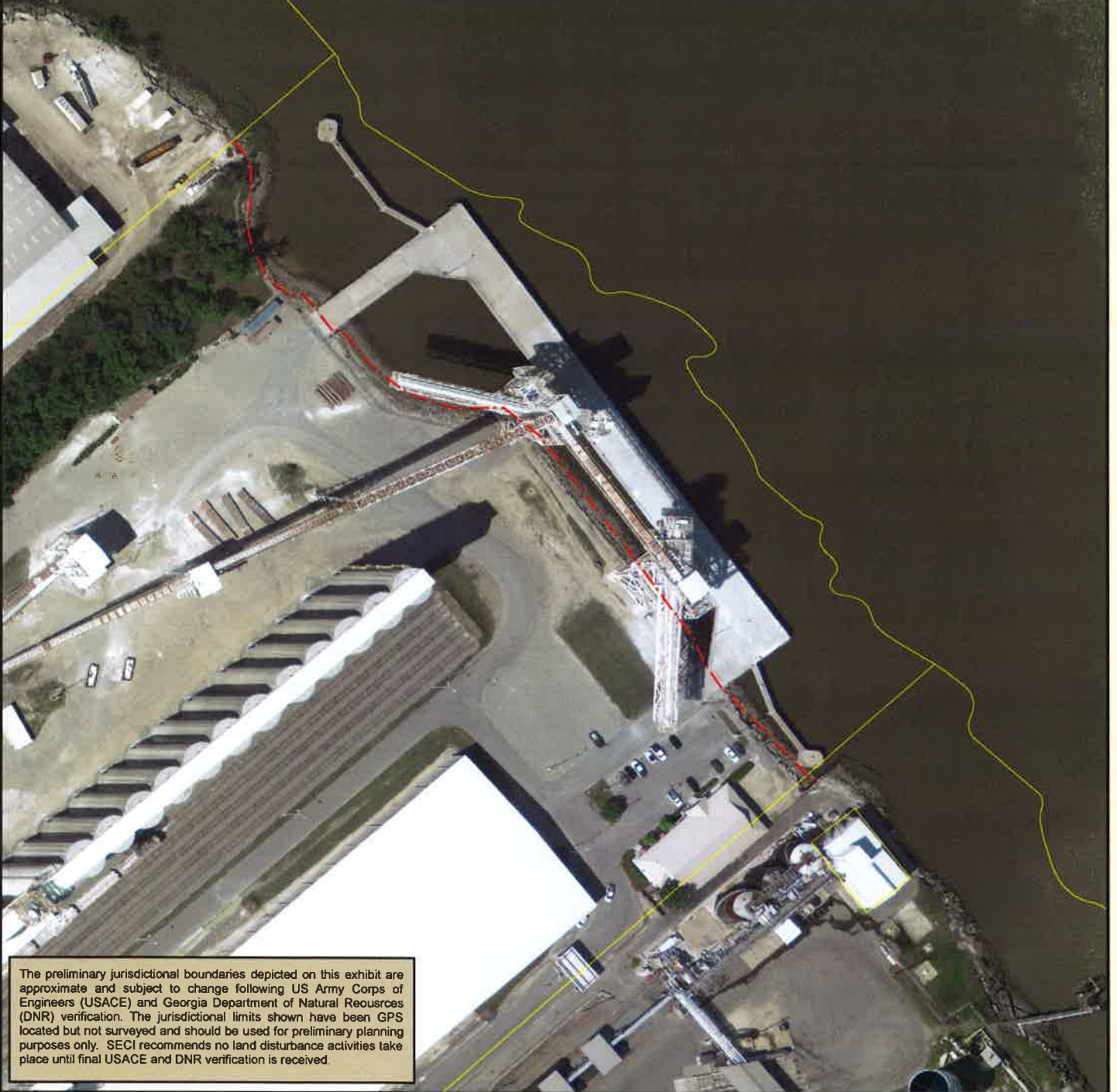
□ Parcel Lines

Prepared By:
sligh environmental consultants, inc.
 31 Park of Commerce Way, Suite 200B
 Savannah, Georgia 31405
 phone (912) 232-0451
 fax (912) 232-0453

US Geological Survey
 Colonial GKT Dock Improvements
 Chatham County, Georgia

1,000
 Feet

Exhibit Date: August 27, 2019
 Drawn By: BWW
 Reviewed By: DJP
 Job Number : 01-19-083



The preliminary jurisdictional boundaries depicted on this exhibit are approximate and subject to change following US Army Corps of Engineers (USACE) and Georgia Department of Natural Resources (DNR) verification. The jurisdictional limits shown have been GPS located but not surveyed and should be used for preliminary planning purposes only. SECI recommends no land disturbance activities take place until final USACE and DNR verification is received.

----- CMPA/Section 10 Line (OHWM)

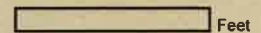
□ Parcel Lines

Prepared By:

sligh environmental consultants, inc.
 31 Park of Commerce Way, Suite 200B
 Savannah, Georgia 31405
 phone (912) 232-0451
 fax (912) 232-0453

Approximate Wetland Sketch
 Colonial GKT Dock
 Chatham County, Georgia

150



Feet

Exhibit Date: August 27, 2019

Drawn By: BWW

Reviewed By: DJP

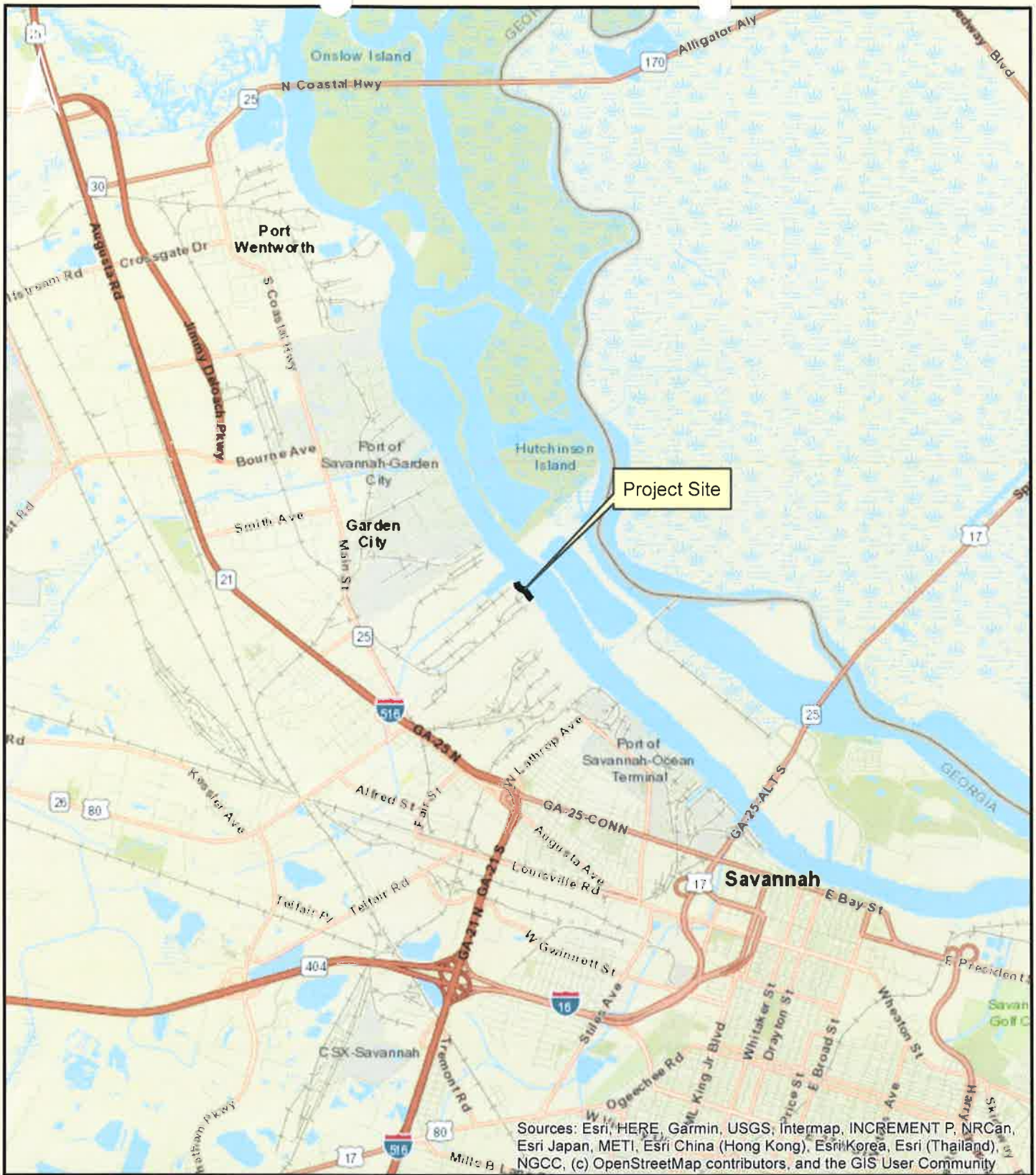
Job Number : 01-19-083

Photograph 1: Upstream End of Existing Facility. Photograph Shows the Location of New Proposed Decking on the Bottom of the Photograph and Proposed Conveyor Support Platforms on the Inside of the Existing Dock.



Photograph 2: Downstream View. Photograph Shows the Location of Proposed Deck Extension on the Downstream Side of the Dock. The Walkway on the Right Side will be Removed. The Mooring Dolphin will Remain.





Sources: Esri, HERE, Garmin, USGS, Intermap, INCREMENT P, NRCan, Esri Japan, METI, Esri China (Hong Kong), Esri Korea, Esri (Thailand), NGCC, (c) OpenStreetMap contributors, and the GIS User Community



Prepared By:
sligh environmental consultants, inc.
 31 Park of Commerce Way, Suite 200B
 Savannah, Georgia 31405
 phone (912) 232-0451
 fax (912) 232-0453

Project Location Map
Colonial GKT Dock Improvements
Chatham County, Georgia

<p>1</p> <p>Miles</p>
Exhibit Date: August 27, 2019
Drawn By: BWW
Reviewed By: DJP
Job Number : 01-19-083