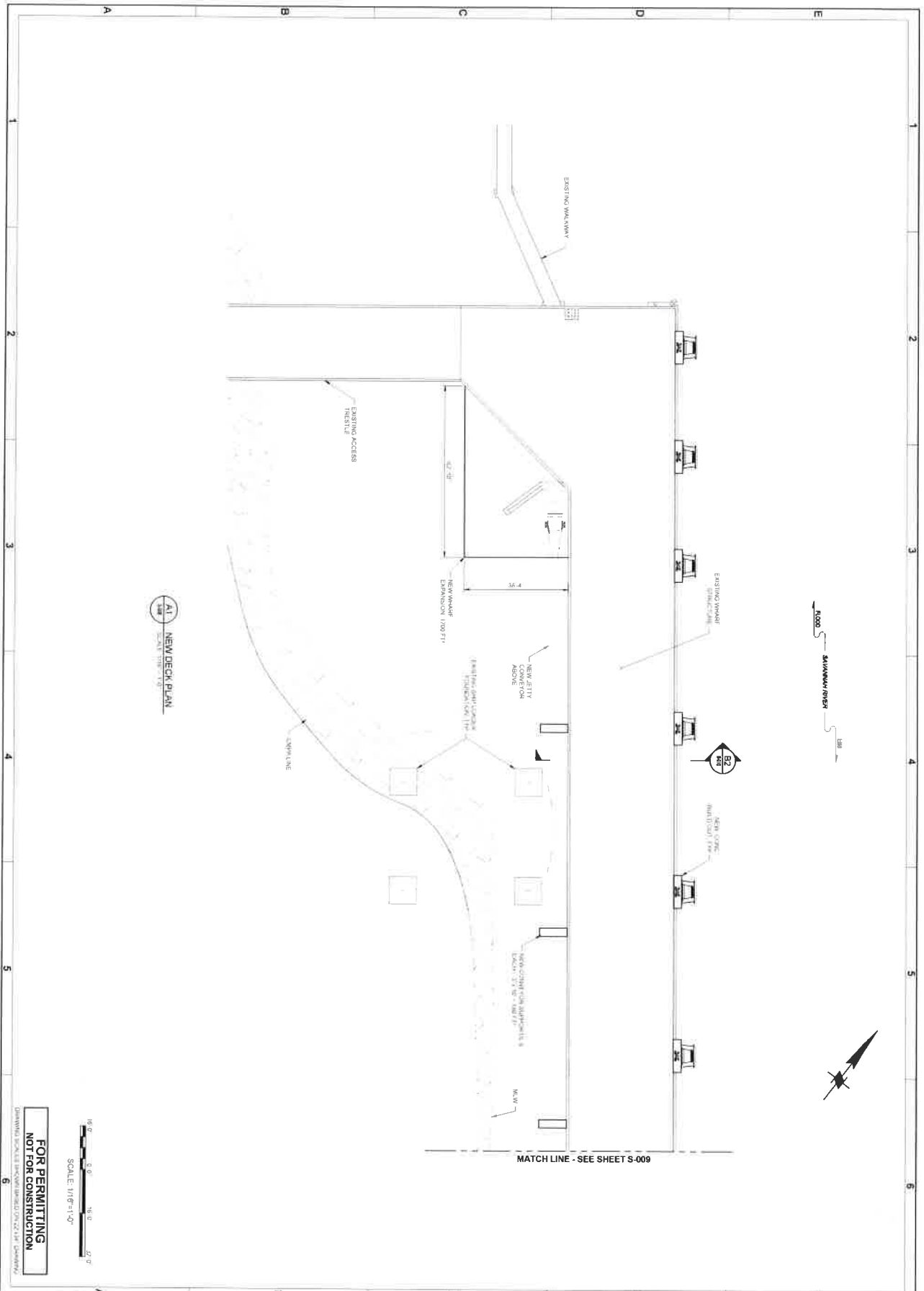


E2 EXISTING TYPICAL WHARF SECTION

SCALE: 1/8"=1'-0"

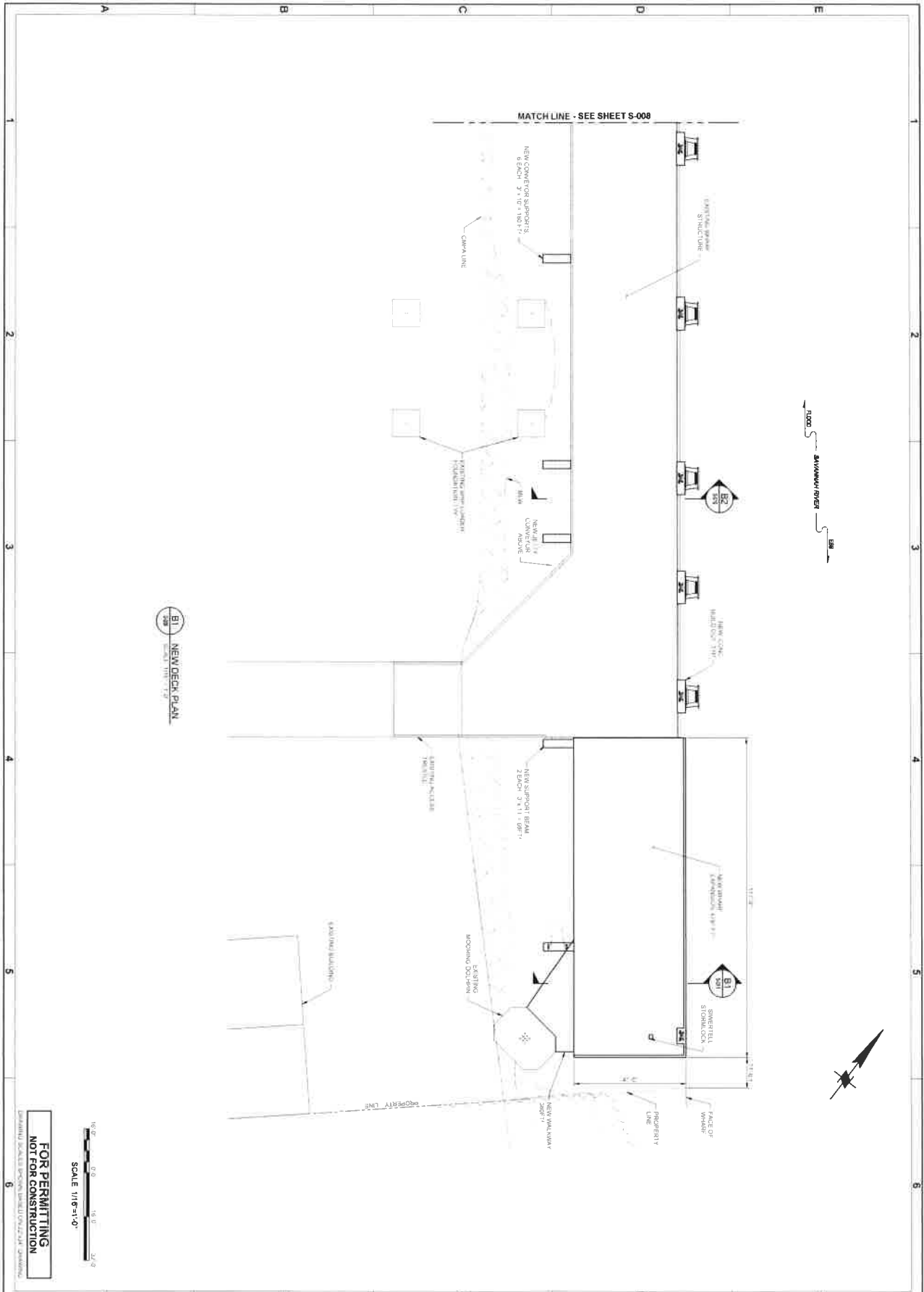
**FOR PERMITTING
NOT FOR CONSTRUCTION**

		Project No. 2020-001 Job No. 2020-001	Title: GEOTECHNICAL Date: 08/11/2020	Scale: 1/8"=1'-0" Sheet: 26 of 26	Client: COLONIAL TERMINALS, INC. SAVANNAH, GA	
	2 EAST BRUNN ST. 312 561 SAVANNAH, GA 31401 912.271.2044	Prepared by: J.S.W. Checked by: J.S.W. Drawn by: J.S.W. Date: 08/11/2020	Project No. 2020-001 Job No. 2020-001	Title: GEOTECHNICAL Date: 08/11/2020	Scale: 1/8"=1'-0" Sheet: 26 of 26	Client: COLONIAL TERMINALS, INC. SAVANNAH, GA

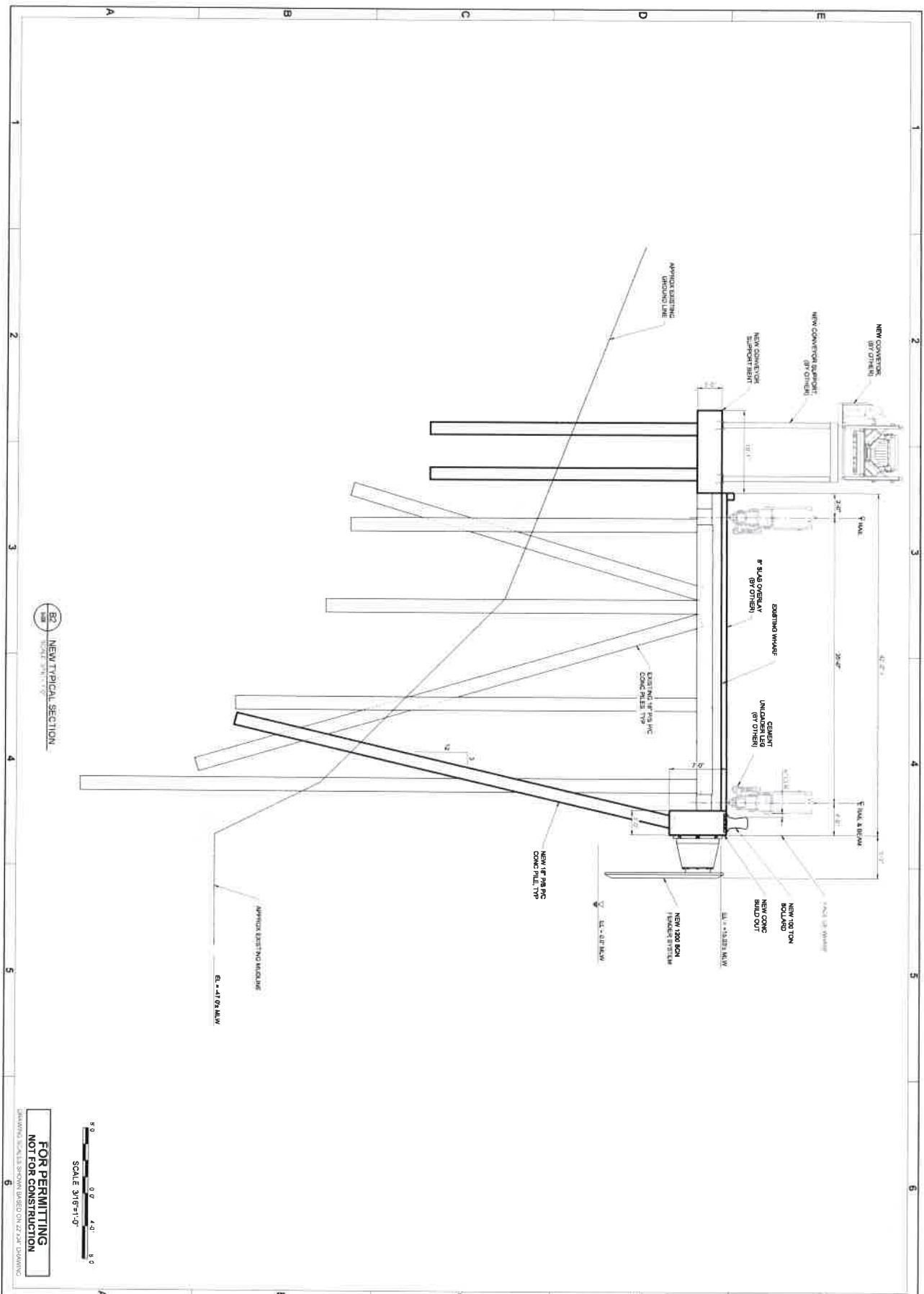


FOR PERMITTING NOT FOR CONSTRUCTION	SEAL PROFESSIONAL ENGINEER STATE OF GEORGIA No. 11283 DATE 08/11/2011	MYATT & RICHEL 2 EAST BRANLEY STE 201 SAVANNAH, GA 31401 912.771.0044	Designer: JPO Date: 06/15/2016 Drawn By: EBN Checked By: EBN Project No: 1603-02 Client: COLONIAL TERMINALS, INC. Project: SAVANNAH, GA GEORGIA KAGLIN TERMINALS DOCK IMPROVEMENTS	COLONIAL TERMINALS, INC. SAVANNAH, GA GEORGIA KAGLIN TERMINALS DOCK IMPROVEMENTS NEW DECK PLAN SHEET 1 OF 2	
--	--	---	--	---	--

File: 07/29/2016 1:17 PM C:\T\Drawings\1603-02\1603-02.dwg, Author: Pjerry, Plot Date: 26/06/2016 11:17 AM by SMLKX, Scale: 26/06/2016 11:17 AM by SMLKX



	 <p>2 EAST BRYAN ST. STE 501 SAVANNAH, GA 31401 912.331.0044</p>	Designed by: JRP Drawn by: BJS Checked by: BJS Date: 08/20/2018	Job No: 18-100-018 Match Printed to: 08/20/18 Scale: 1/8" = 1'-0"	COLGRIAL TERMINALS, INC. GEORGIA RAUEN TERMINALS DOCK IMPROVEMENTS NEW DECK PLAN SHEET 2 OF 2	
---	---	--	---	---	---

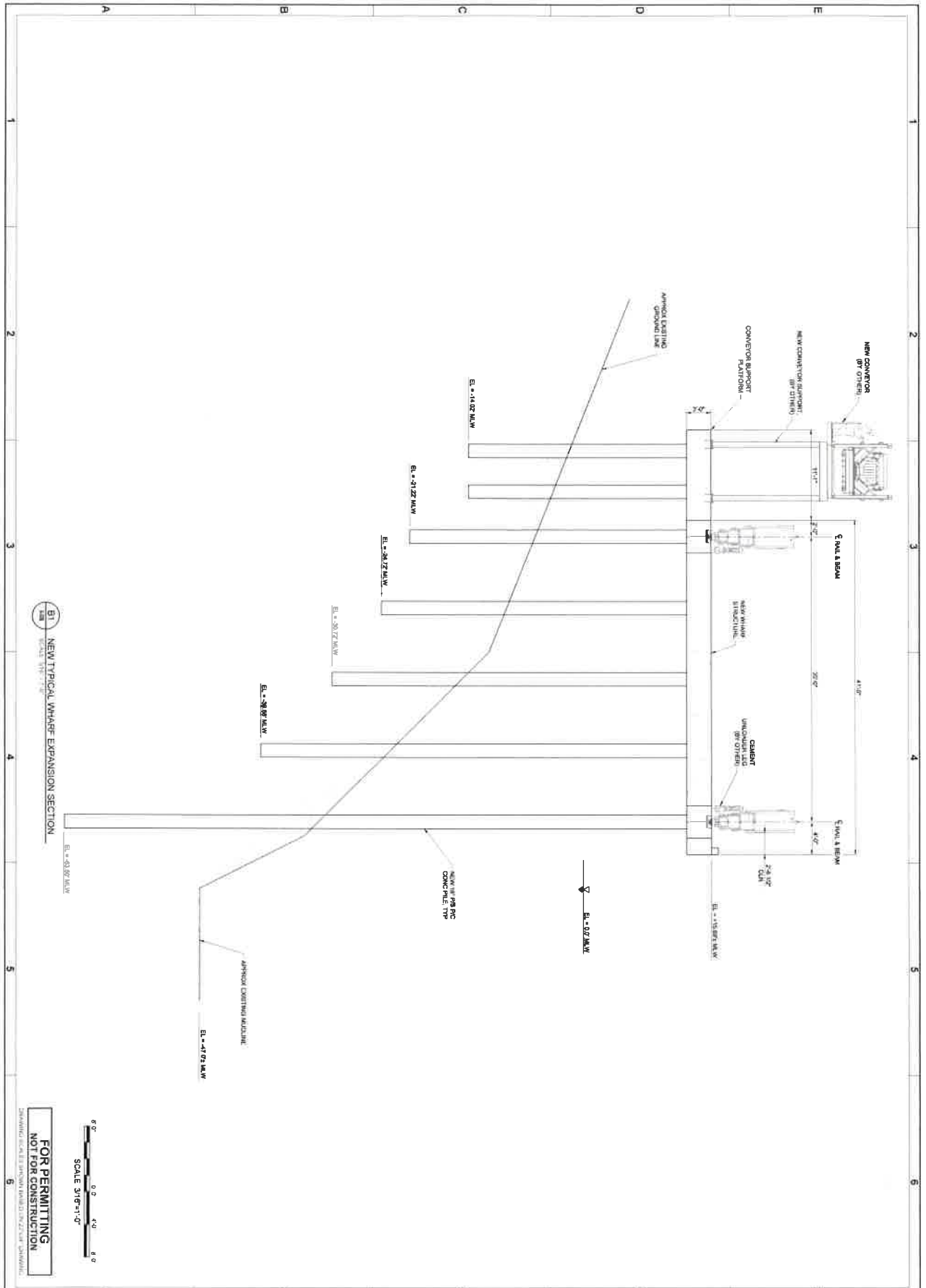


NEW TYPICAL SECTION

SCALE 3/16"=1'-0"

FOR PERMITTING
NOT FOR CONSTRUCTION

		Project No: 2020-0044 Date: 12/11/2020	COLONIAL TERMINALS, INC. SAVANNAH, GA GEORGIA KADLIN TERMINALS DOCK IMPROVEMENTS NEW TYPICAL SECTION	
	Prepared by: JMS Drawn by: JMS Checked by: JMS Date: 12/11/2020	Title: GE 500-9 Project No: 2020-0044 Date: 12/11/2020	Project Name: GE 500-9 Drawing No: 12/11/2020	Project Name: GEORGIA KADLIN TERMINALS DOCK IMPROVEMENTS Drawing No: NEW TYPICAL SECTION



BT NEW TYPICAL WHARF EXPANSION SECTION

FOR PERMITTING
NOT FOR CONSTRUCTION



		2 EAST BAYVIEW ST. STE 501 SAVANNAH, GA 31401 912-231-6004	Project No. 14-1001-11 Date: 1/14/15 Scale: 1/8"=1'-0" Drawn by: JPN Checked by: JPN Title: NEW TYPICAL WHARF EXPANSION SECTION	COLONIAL TERMINALS, INC. SAVANNAH, GA GEORGIA KAOLIN TERMINALS DOCK IMPROVEMENTS	
		NEW TYPICAL WHARF EXPANSION SECTION	SHEET NO. S-011 OF 11		

FILE: C:\13170594-01-GAT Dock Improvements\DWG\CAD\A_Wharf_Permitting\2500K-S-011_Plot.dwg 2/6/2015 7:27 AM by: SARKIS, MCK. Sheet: 2500K-S-011 OF 11