

DESIGN SOLUTION - CENTER STREET



DUNE RESTORATION & MAINTENANCE:

APPROXIMATE DIMENSIONS:
60' WIDE x 27' DEEP x 7' HT

SLOPE: 1.5:1

SAND VOLUME:
1,620 SF @ 7' HT =
+/- 1,500 TONS OF SAND
(+/- 300 CUYDS)

TYBEE ISLAND DUNE RESTORATION 2019

RECEIVED

JAN 07 2019
GA DNR / HMP

DESIGN SOLUTION - 3RD STREET



DUNE RESTORATION & MAINTENANCE:

APPROXIMATE DIMENSIONS:
50' WIDE x 130' DEEP x 8' HT

SLOPE: 8:1

SAND VOLUME:
6,500 SF @ 8' HT =
+/- 2,000 TONS OF SAND
(+/- 1,200 CUYDS)

DESIGN SOLUTION - 2ND STREET



DUNE RESTORATION & MAINTENANCE:

APPROXIMATE DIMENSIONS:
60' WIDE x 27' DEEP x 7' HT

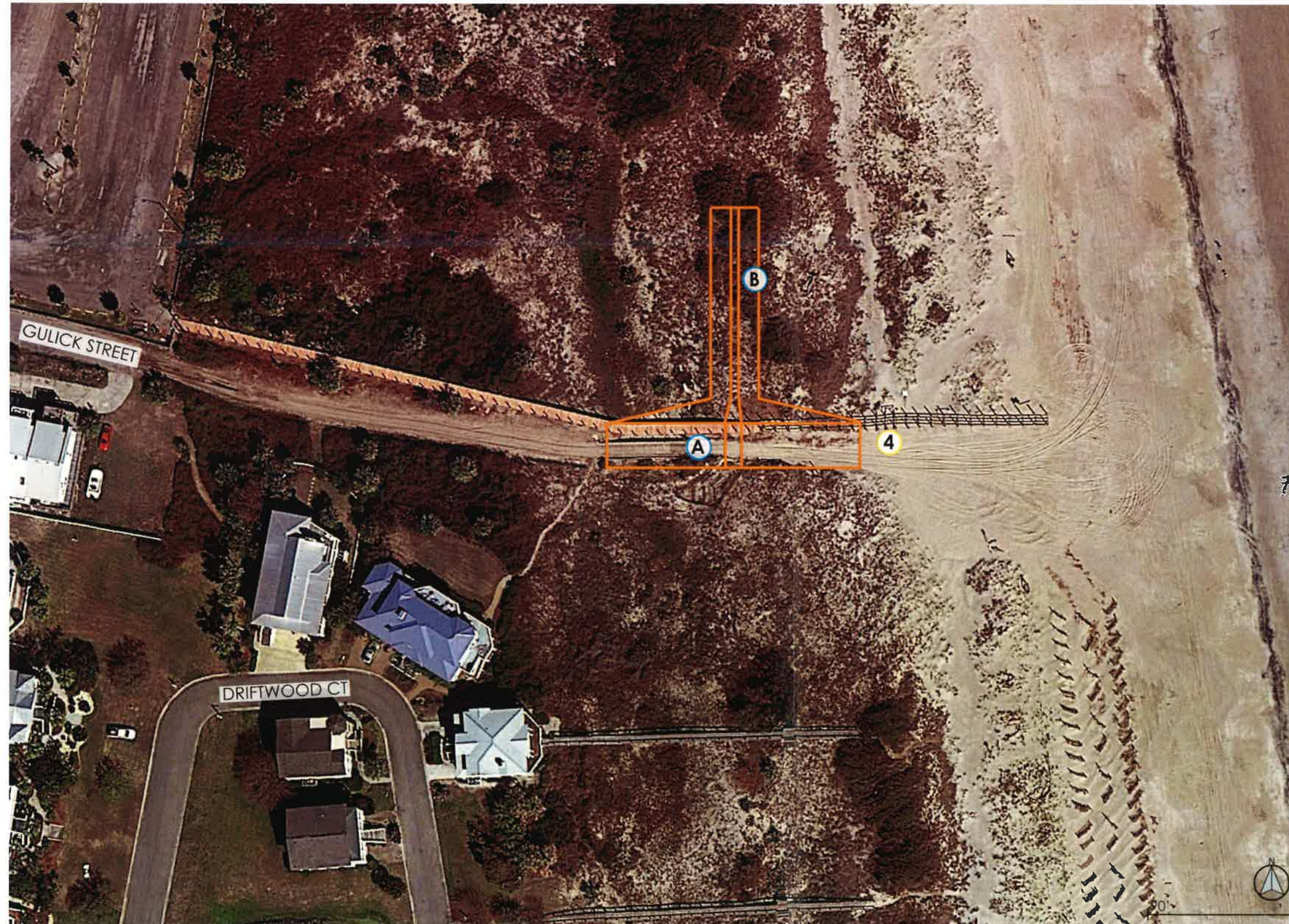
SLOPE: 1.5:1

SAND VOLUME:
1,620 SF @ 7' HT =
+/- 1,500 TONS OF SAND
(+/- 300 CUYDS)

TYBEE ISLAND DUNE RESTORATION 2019

RECEIVED
JAN 07 2019
GA DNR / HMP

DESIGN SOLUTION - GULICK STREET



DUNE RESTORATION & MAINTENANCE:

APPROXIMATE DIMENSIONS:
 SECTION A (VEHICULAR):
 30' WIDE x 200' DEEP x 12' HT
 SECTION B:
 135' WIDE x 34' DEEP x 10' HT

SLOPES:
 SECTION A (VEHICULAR) : 8:1
 SECTION B: 1.5:1

SAND VOLUME:
 SECTION A: 6,000 SF @ 12' HT =
 +/- 3,000 TONS OF SAND
 (+/- 2,000 CUYDS)
 SECTION B: 6,460 SF @ 10' HT =
 +/- 2,000 TONS OF SAND
 (+/- 1,200 CUYDS)
 TOTAL: +/- 5,000 TONS OF SAND
 (+/- 3,200 CUYDS)

TYBEE ISLAND DUNE RESTORATION 2019

RECEIVED
 JAN 07 2019
 GA DNR / HMP



SUMMARY

APPROXIMATE PROJECT LIMIT: +/- 48,250 SF (≈1.11 ACRES)

APPROXIMATE CENTER STREET, 3RD STREET & 2ND STREET AREA: +/- 15,250 SF (≈.35 ACRES)

APPROXIMATE GULICK STREET AREA: +/- 33,000 SF (≈.76 ACRES)

DUNE RESTORATION & MAINTENANCE:

CENTER STREET DUNE (#1): 1,620 SF @ 7' HEIGHT = +/- 1,500 TONS (+/-300 CUYDS) OF SAND

3RD STREET DUNE (#2): 6,500 SF @ 8' HEIGHT = +/- 2,000 TONS (+/- 1,200 CUYDS) OF SAND

2ND STREET DUNE (#3): 1,620 SF @ 7' HEIGHT = +/- 1,500 TONS (+/- 300 CUYDS) OF SAND

GULICK STREET DUNE (#4):

SECTION A: 6,000 SF @ 12' HEIGHT = +/- 3,000 TONS (+/- 2,000 CUYDS) OF SAND

SECTION B: 6,460 SF @ 10' HEIGHT = +/- 2,000 TONS (+/- 1,200 CUYDS) OF SAND

EQUIPMENT:

- BULLDOZERS
- DUMP TRUCKS
- BACKHOE LOADER
- SKID-STEER LOADER
- CEMENT TRUCKS (CROSSOVER)
- HAND SHOVELS
- RUBBER TIRE LOADERS
- VIBRATORY SMOOTH DRUM ROLLER

