

Z:\25803\25803.0000\Engineering\Drawings\permits\25803 - Riverwalk Permits - Revised II-15-17.dwg - Dec 8, 2017 - 10:40:49 AM

CITY OF *Savannah* GEORGIA

EAST RIVER WALK CONNECTION



DECEMBER 8, 2017

J-25803.0000



RIVERWALK CONNECTION

CLIENT:

CITY OF SAVANNAH

LOCATION: SAVANNAH, GEORGIA

DATE: DECEMBER 8, 2017

DRAWN BY: JWR

SHEET: 1

JOB NUMBER: J-25803.0000

REVIEWED BY: SHG

SCALE: As Shown



THOMAS & HUTTON
Engineering | Surveying | Planning | GIS | Consulting

50 Park of Commerce Way
Savannah, GA 31405 • 912.234.5300

www.thomasandhutton.com

RECEIVED

FEB 09 2018
GA DNR

Z:\25803\25803.0000\Engineering\Drawings\permits\25803 - Riverwalk Permit - Revised 11-15-17.dwg - Dec 8, 2017 - 10:42:05 AM



RIVERWALK CONNECTION

QUAD MAP

CLIENT:
CITY OF SAVANNAH

LOCATION: SAVANNAH, GEORGIA
 DATE: DECEMBER 8, 2017 DRAWN BY: JWR SHEET: 2
 JOB NUMBER: J-25803.0000 REVIEWED BY: SHG SCALE: 1"=2000'

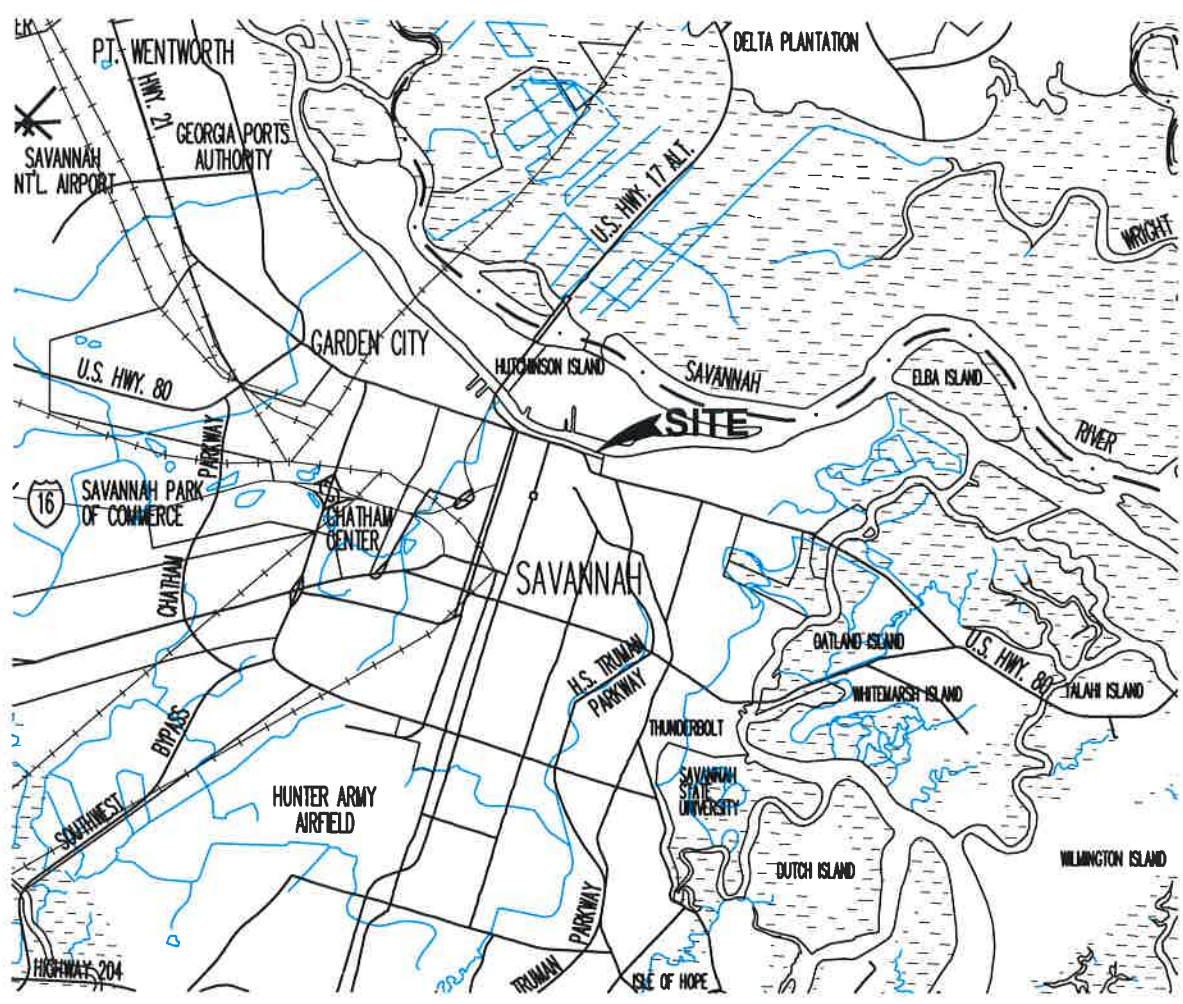
THOMAS & HUTTON
 Engineering | Surveying | Planning | GIS | Consulting

50 Park of Commerce Way
 Savannah, GA 31405 • 912.234.5300

www.thomasandhutton.com

RECEIVED
 FEB 09 2018
 GA DNR

Z:\25803\25803.0000\Engineering\Drawings\Permits\25803 - Riverwalk Permits - Revised 11-15-17.dwg - Dec 8, 2017 - 10:42:37 AM



RIVERWALK CONNECTION

VICINITY MAP

CLIENT:
CITY OF SAVANNAH

LOCATION: SAVANNAH, GEORGIA
DATE: DECEMBER 8, 2017 DRAWN BY: JWR SHEET: 3
JOB NUMBER: J-25803.0000 REVIEWED BY: SHG SCALE: 1" = 1000'



50 Park of Commerce Way
Savannah, GA 31405 • 912.234.5300

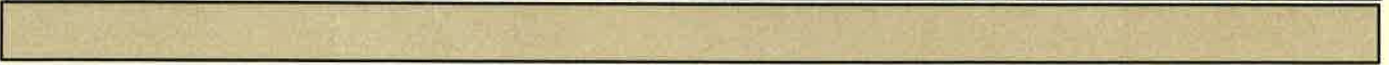
www.thomasandhutton.com

RECEIVED
FEB 09 2018

GA DNR



Project Area



Prepared By:
sligh environmental consultants, inc.
 31 Park of Commerce Way, Suite 200B
 Savannah, Georgia 31405
 phone (912) 232-0451
 fax (912) 232-0453

**2015 Aerial Photograph
 Riverwalk Connector
 Chatham County, Georgia**

300
 Feet

Exhibit Date: December 15, 2017

Drawn By: BWW

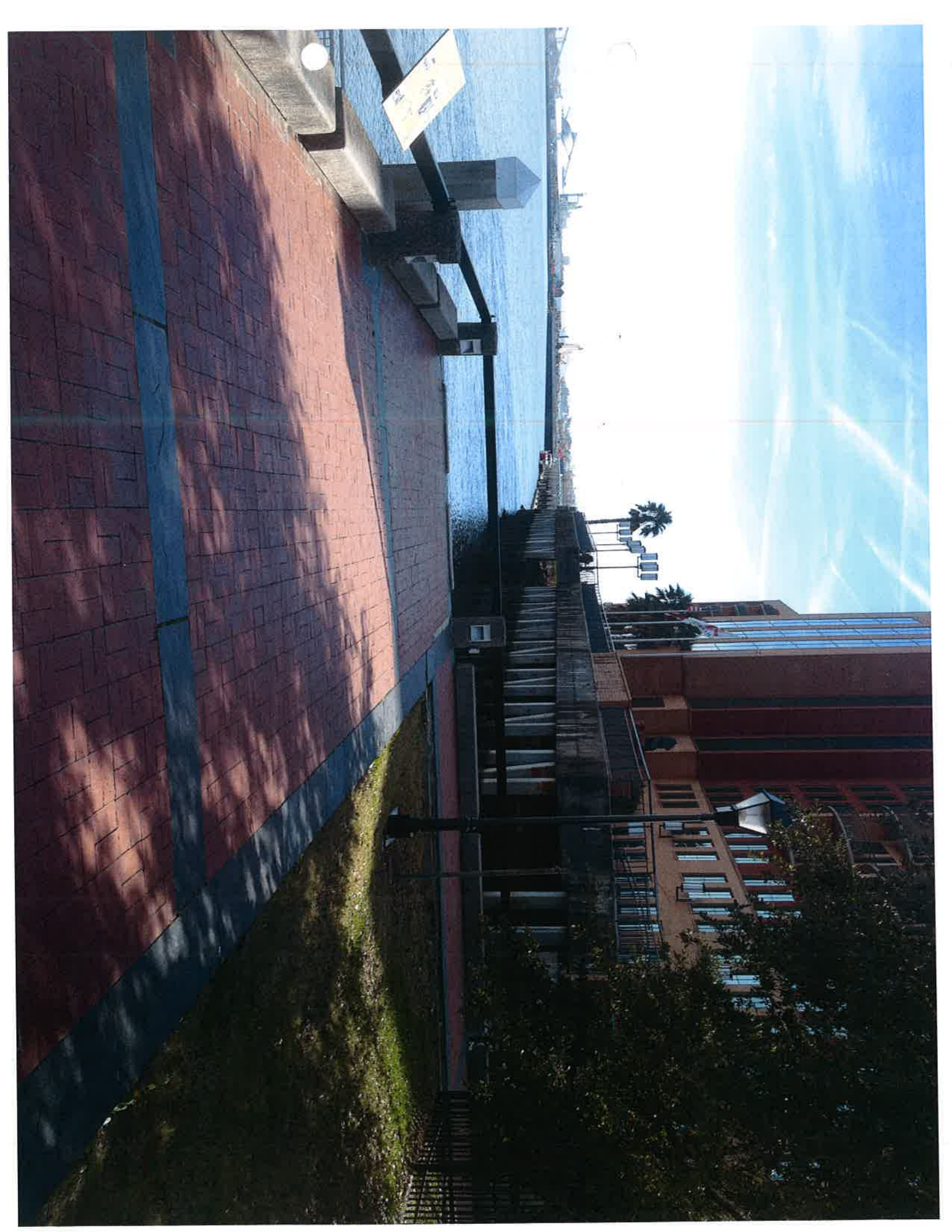
Reviewed By: JPW

Job Number : 01-15-053

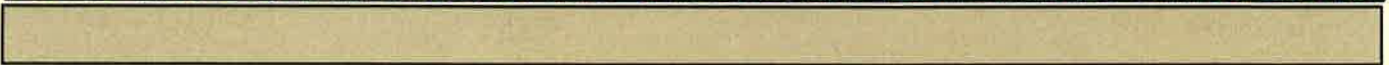
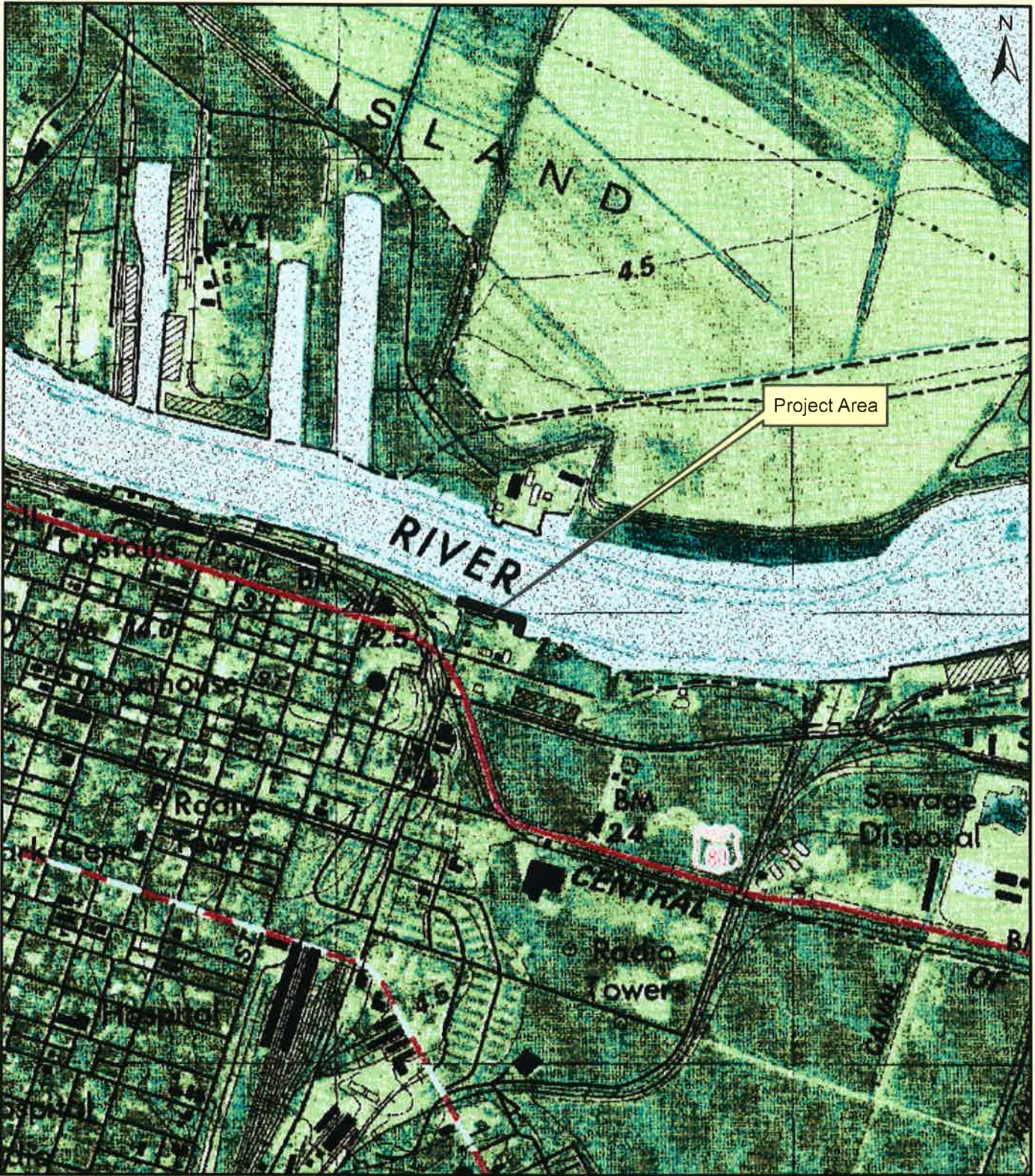
RECEIVED
 FEB 09 2017
 GA DNR











Prepared By:
sligh environmental consultants, inc.
 31 Park of Commerce Way, Suite 200B
 Savannah, Georgia 31405
 phone (912) 232-0451
 fax (912) 232-0453

US Geological Survey
 Riverwalk Connector
 Chatham County, Georgia

1,000
 Feet

Exhibit Date: December 15, 2017

Drawn By: BWW

Reviewed By: JPW

Job Number : 01-15-053

RECEIVED
 FEB 09 2017

GA DNR