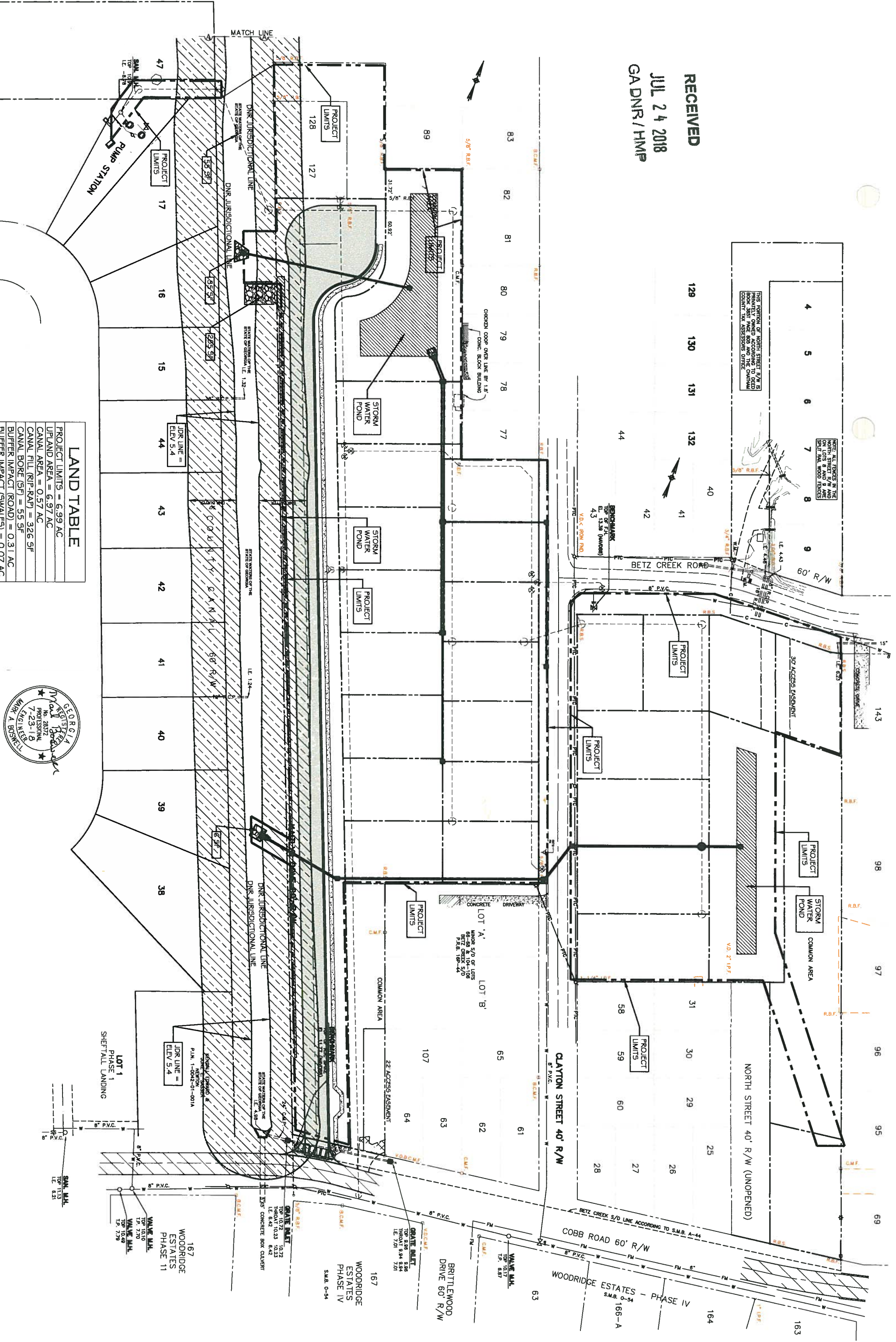
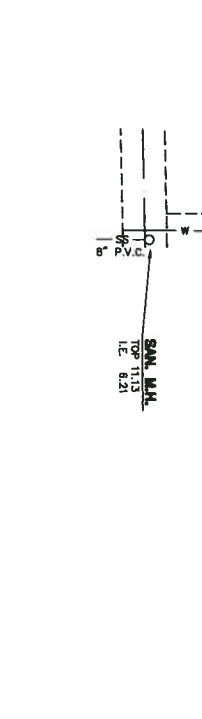
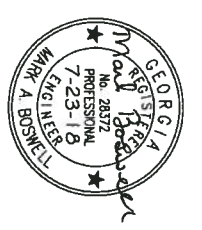


RECEIVED
 JUL 24 2018
 GA DNR / HMP



LAND TABLE

PROJECT LIMITS = 6.99 AC
UPLAND AREA = 6.97 AC
CANAL AREA = 0.57 AC
CANAL FILL (RIP-RAP) = 326 SF
CANAL BORE (SF) = 55 SF
BUFFER IMPACT (ROAD) = 0.31 AC
BUFFER IMPACT (WATER) = 0.07 AC

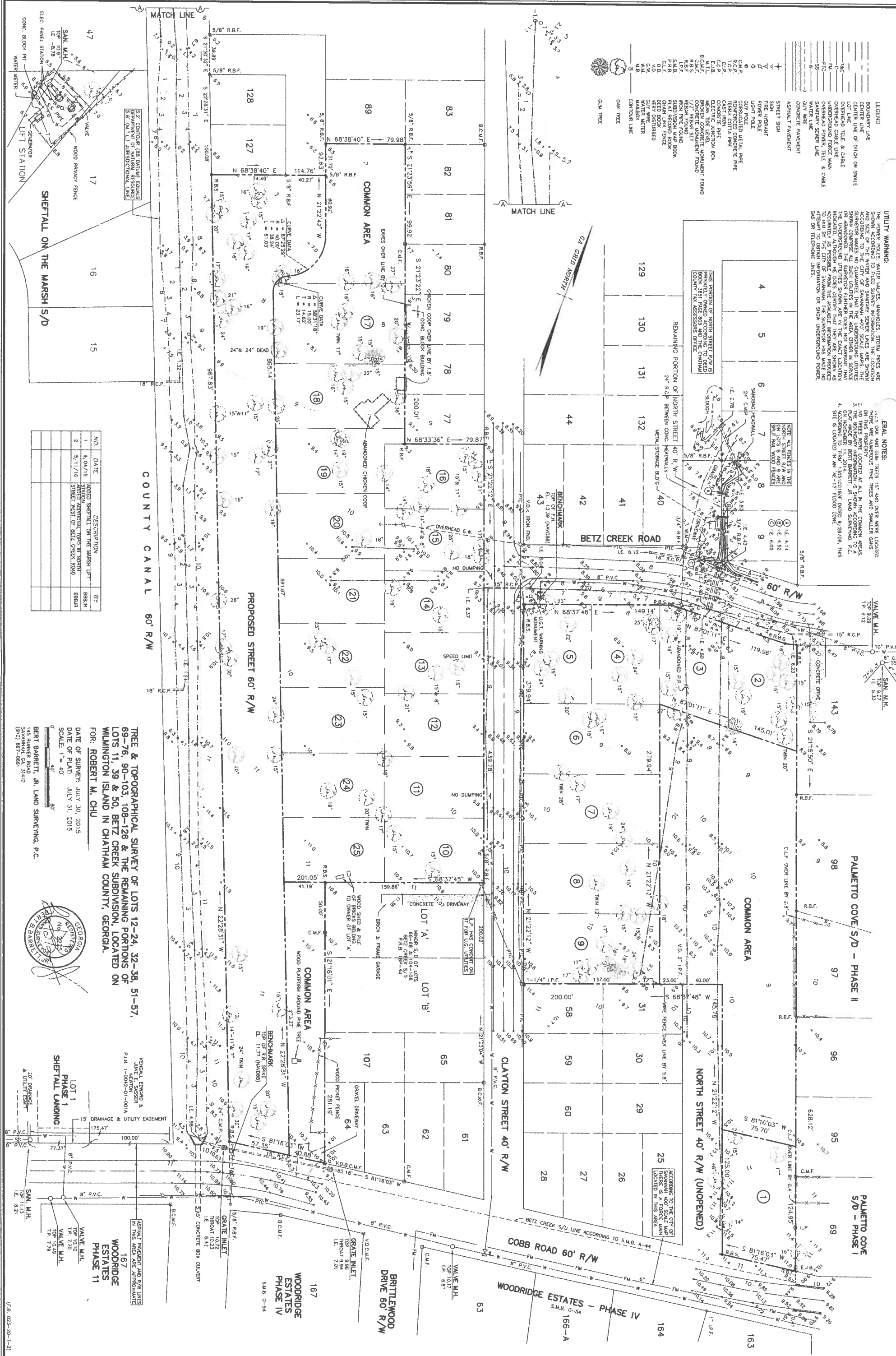


- LEGEND**
- BOUNDARY LINE
 - CENTER LINE OF RICH OR SWALE
 - LOT LINE
 - OVERHEAD TELE & CABLE
 - OVERHEAD FORCE MAIN
 - UNDERGROUND FORCE MAIN
 - UNDERGROUND TELE & CABLE
 - SAWYER SEWER LINE
 - SAWYER WATER LINE
 - SAWYER GAS LINE
 - CONCRETE PAVEMENT
 - ASPHALT PAVEMENT
 - STREET SIGN
 - POLE HYDRANT
 - POWER POLE
 - LIGHT POLE
 - CONCRETE METAL PIPE
 - CONCRETE TELE PIPE
 - TERRA COTTA PIPE
 - CAST IRON PIPE
 - CONCRETE FUNCTION BOX
 - MEAN TIDE LEVEL
 - BROKEN CONCRETE MONUMENT FOUND
 - REBAR FOUND
 - NON FUEL BURNING BURNER
 - FLAT RECORD BOOK
 - CHAIN LINK FENCE
 - VEGETATION DISTURBED
 - DAY WIRE
 - WATER METER
 - WATER METER
 - CONTOUR LINE
 - OAK TREE
 - CUM TREE

UTILITY WARNING:
 THE POWER POLES WATER VALVES MANHOLES STUMP PILES ARE SHOWN ACCORDING TO FIELD SURVEY INFORMATION. THE LOCATION AND SIZE OF THE WATER AND SANITARY SEWER LINES ARE SHOWN ACCORDING TO THE CITY OF SAVANNAH RECORD SCALE MAPS. THE LOCATION AND SIZE OF THE GAS LINES ARE SHOWN ACCORDING TO THE CITY OF SAVANNAH RECORD SCALE MAPS. THE LOCATION AND SIZE OF THE TELEPHONE LINES ARE SHOWN ACCORDING TO THE CITY OF SAVANNAH RECORD SCALE MAPS. THE LOCATION AND SIZE OF THE UNDERGROUND FORCE MAINS ARE SHOWN ACCORDING TO THE CITY OF SAVANNAH RECORD SCALE MAPS. THE LOCATION AND SIZE OF THE UNDERGROUND TELE & CABLE LINES ARE SHOWN ACCORDING TO THE CITY OF SAVANNAH RECORD SCALE MAPS. THE LOCATION AND SIZE OF THE SAWYER SEWER LINES ARE SHOWN ACCORDING TO THE CITY OF SAVANNAH RECORD SCALE MAPS. THE LOCATION AND SIZE OF THE SAWYER WATER LINES ARE SHOWN ACCORDING TO THE CITY OF SAVANNAH RECORD SCALE MAPS. THE LOCATION AND SIZE OF THE SAWYER GAS LINES ARE SHOWN ACCORDING TO THE CITY OF SAVANNAH RECORD SCALE MAPS. THE SURVEYOR HAS MADE NO ATTEMPT TO VERIFY THE LOCATION OR DEPTH OF ANY OF THESE UTILITIES.

EMAL NOTES:
 1. ALL TREES IN THE COMMON AREA AND OVER WERE LOCATED AND MEASURED.
 2. NO TREES WERE LOCATED AT ALL IN THE COMMON AREA.
 3. PLANTING BY BERT BARRETT, JR. LAND SURVEYING, P.C. ON NOVEMBER 11, 2014.
 4. COOPERATION FROM SALES/OWNER DATED 9/28/06. THIS SITE IS LOCATED IN SA. 2013 13000 3000.

NOTE: ALL TREES IN THE COMMON AREA AND OVER WERE LOCATED AND MEASURED.
 1. ALL TREES IN THE COMMON AREA AND OVER WERE LOCATED AND MEASURED.
 2. NO TREES WERE LOCATED AT ALL IN THE COMMON AREA.
 3. PLANTING BY BERT BARRETT, JR. LAND SURVEYING, P.C. ON NOVEMBER 11, 2014.
 4. COOPERATION FROM SALES/OWNER DATED 9/28/06. THIS SITE IS LOCATED IN SA. 2013 13000 3000.



5.7' CONTOUR (SEE DATUM EQUALS DEPARTMENT OF NATURAL RESOURCES 5.5' (M.T.L.) JURISDICTIONAL LINE)

COUNTY CANAL 60' R/W

PROPOSED STREET 60' R/W

CLAYTON STREET 40' R/W

COBB ROAD 60' R/W

BRITTLEWOOD DRIVE 60' R/W

NORTH STREET 40' R/W (UNOPENED)

PALMETTO COVE S/D - PHASE II

PALMETTO COVE S/D - PHASE I

TREE & TOPOGRAPHICAL SURVEY OF LOTS 12-24, 32-38, 51-57, 69-76, 90-103, 108-126 & THE REMAINING PORTIONS OF LOTS 11, 39 & 50, BETZ CREEK SUBDIVISION, LOCATED ON WILMINGTON ISLAND IN CHATHAM COUNTY, GEORGIA.
 FOR: ROBERT M. CHU

WOODRIDGE ESTATES PHASE IV
 S.M.B. 0-54

WOODRIDGE ESTATES PHASE 11
 S.M.B. 0-54

NO.	DATE	DESCRIPTION	BY
1	9/04/15	ADDED SHEET FALL ON THE MARSH S/D	BBBR
2	5/11/16	REVISIONS TO THE MARSH S/D	BBBR

DATE OF SURVEY: JULY 30, 2015
 DATE OF PLAT: JULY 31, 2015
 SCALE: 1" = 40'

BERT BARRETT, JR. LAND SURVEYING, P.C.
 145 RUNNER ROAD
 (912) 897-0651

LOT 1
 SHEET FALL ON THE MARSH S/D

WOODRIDGE ESTATES PHASE 11
 SHEET FALL ON THE MARSH S/D

WOODRIDGE ESTATES PHASE IV
 SHEET FALL ON THE MARSH S/D

LET 9
4 +/-
1.26

DITCH INLET 6
TOP 9.28 +/-
PIPE IE 5.37

DITCH INLET 7
TOP 9.80 +/-
PIPE IE 5.50

DITCH INLET
TOP 8.84
PIPE IE 5.2

P10 = 180 LF
DOUBLE 15" RCP
AT 0.1%

P9 = 130 LF 24"
RCP AT 0.1%

P8 = 105 LF
RCP AT 0.1%

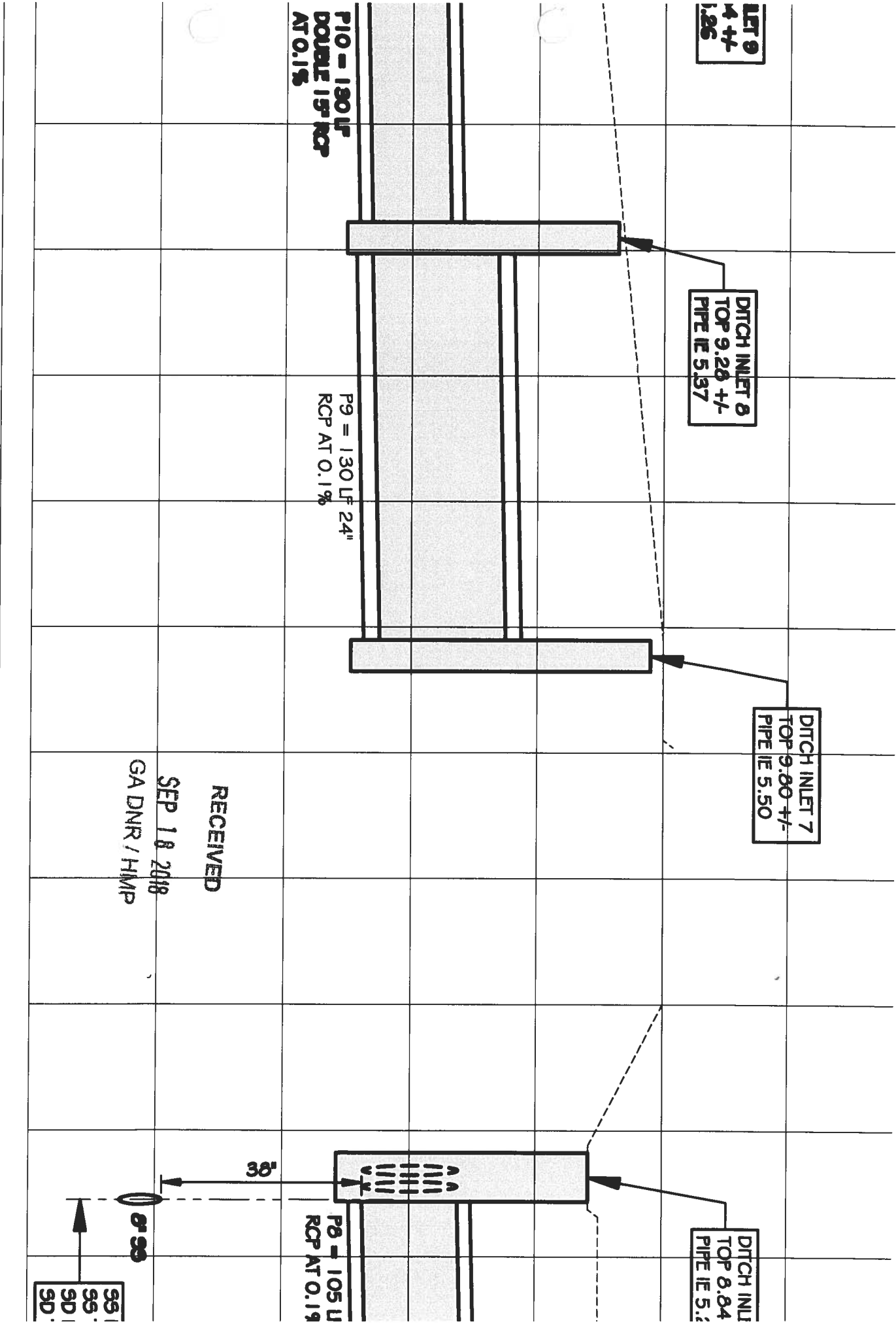
RECEIVED
SEP 18 2018
GA DNR / HMP

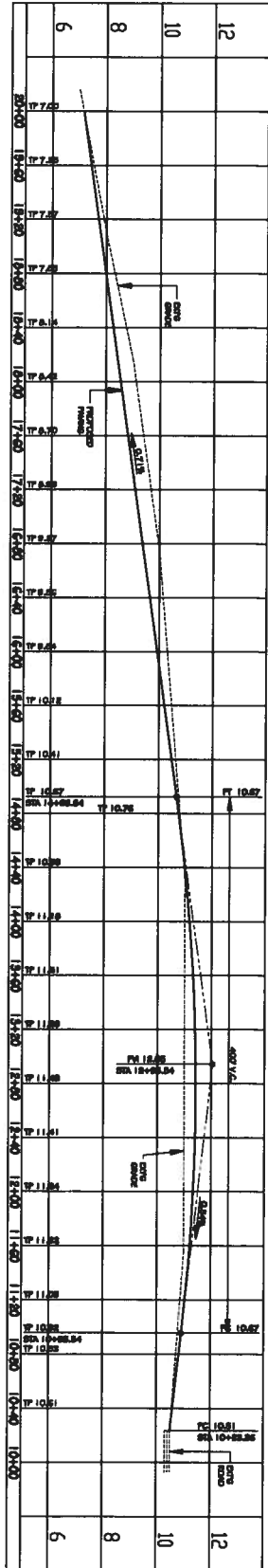
95.1
95.0
95.0
95.0

STORM PIPE PROFILES

H: 1" = 40'

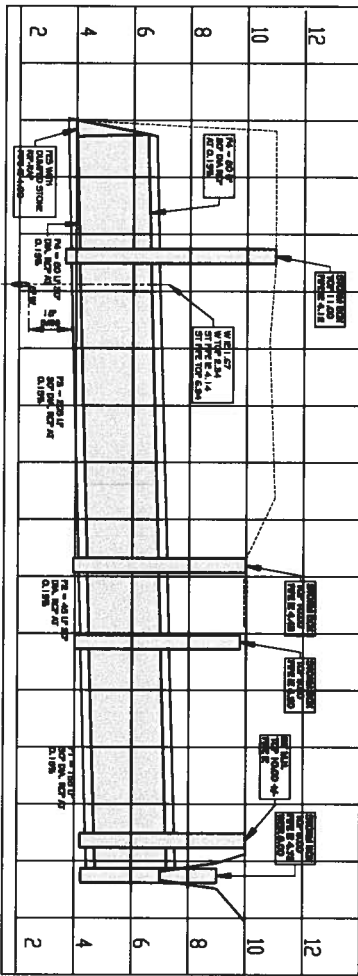
V: 1" = 20'





H: 1" = 40'
V: 1" = 2'

KAITLYN COVE ROAD CENTERLINE PROFILE



H: 1" = 40'
V: 1" = 2'

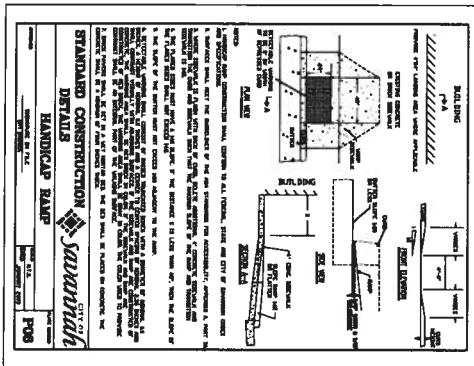
STORM PIPE PROFILES

RECEIVED

SEP 18 2018

GA 11115 / 19MP

STORM AND UTILITIES MANHOLES AND RISE PIPES:
1. RISE PIPE AND MANHOLE TO BE CONSTRUCTED AS PER
REQUIREMENTS AND NOT FOR THE HANDBOOK, SEE, ETC.



STANDARD CONSTRUCTION DETAILS HANDBOOK
HANDICAP RAMP
SCALE: 1/8\"/>