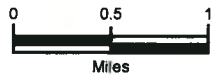


-  Approximate Area of Investigation
-  Proposed Sidewalk Footprint



Source(s): ESRI BaseMap StreetMap

Disclaimer: The information depicted on this figure is for conceptual purposes only, serves to aid a licensed engineer or geologist in rendering professional services, and is subject to review and approval by appropriate regulatory agencies.

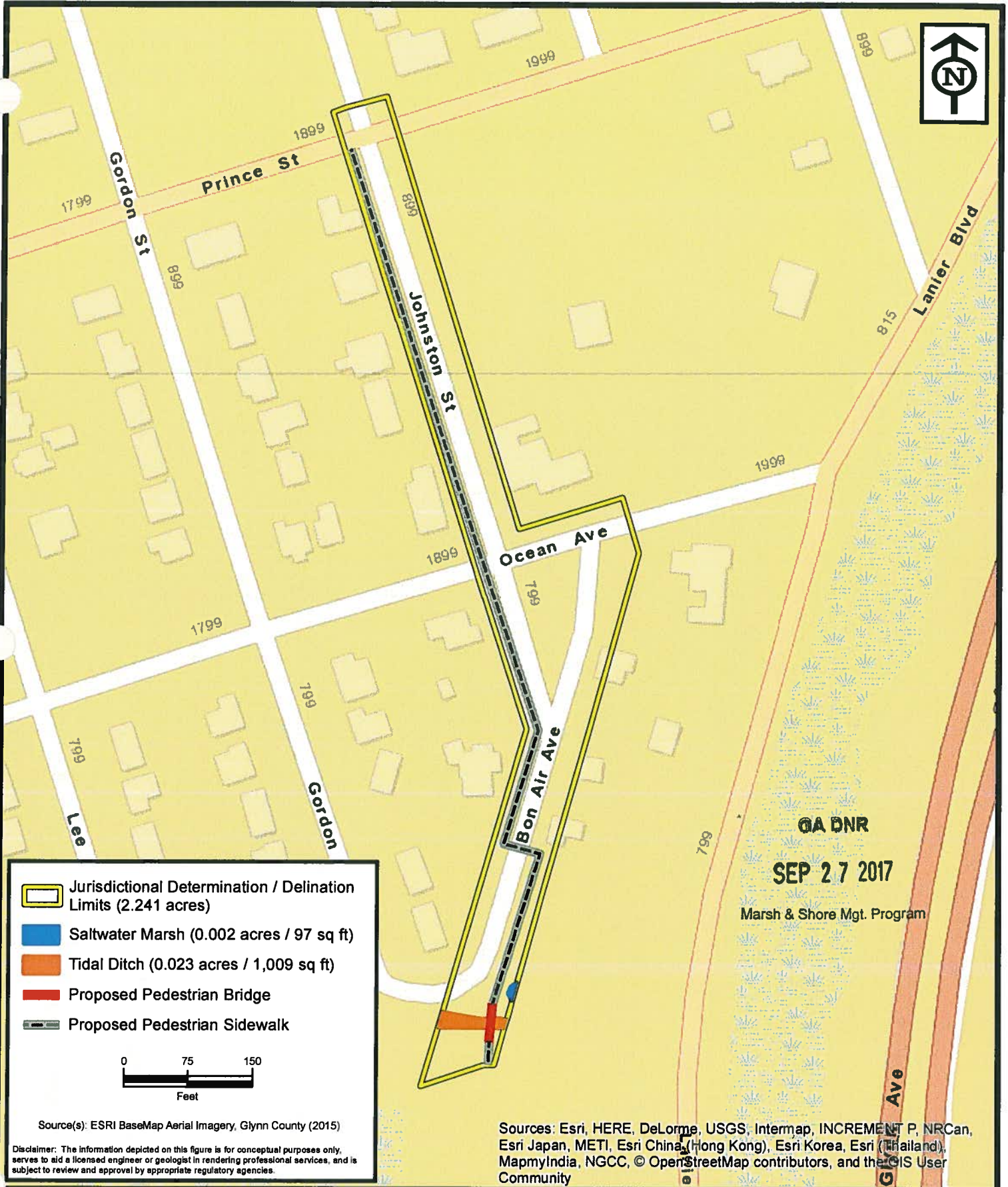
Sources: Esri, HERE, DeLorme, USGS, Intermap, INCREMENT P, NRCan, Esri Japan, METI, Esri China (Hong Kong), Esri Korea, Esri (Thailand), MapmyIndia, NGCC, © OpenStreetMap contributors, and the GIS User Community








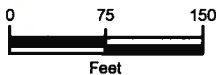
ENVIRONMENTAL SERVICES, INC.
 101 B Estus Drive
 Savannah, GA 31404
 (912) 236-4711
 (912) 236-3688 Fax
 www.environmentalservicesinc.com

Project Vicinity
City of Brunswick - Glynn Middle Sidewalk
 Glynn County, Georgia

Project:	ES16007.00
Date:	Jan. 2017
Drwn/Chkd:	KHS/MJD
Figure:	1



-  Jurisdictional Determination / Delineation Limits (2.241 acres)
-  Saltwater Marsh (0.002 acres / 97 sq ft)
-  Tidal Ditch (0.023 acres / 1,009 sq ft)
-  Proposed Pedestrian Bridge
-  Proposed Pedestrian Sidewalk



Source(s): ESRI BaseMap Aerial Imagery, Glynn County (2015)

Disclaimer: The information depicted on this figure is for conceptual purposes only, serves to aid a licensed engineer or geologist in rendering professional services, and is subject to review and approval by appropriate regulatory agencies.

GA DNR
 SEP 27 2017
 Marsh & Shore Mgt. Program

Sources: Esri, HERE, DeLorme, USGS, Intermap, INCREMENT P, NRCan, Esri Japan, METI, Esri China (Hong Kong), Esri Korea, Esri (Thailand), MapmyIndia, NGCC, © OpenStreetMap contributors, and the GIS User Community











ENVIRONMENTAL SERVICES, INC.

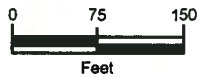
101 B Estus Drive
 Savannah, GA 31404
 (912) 236-4711
 (912) 236-3668 Fax

www.environmentalservicesinc.com

Proposed Pedestrian Sidewalk & Bridge
City of Brunswick - Glynn Middle Sidewalk
 Glynn County, Georgia

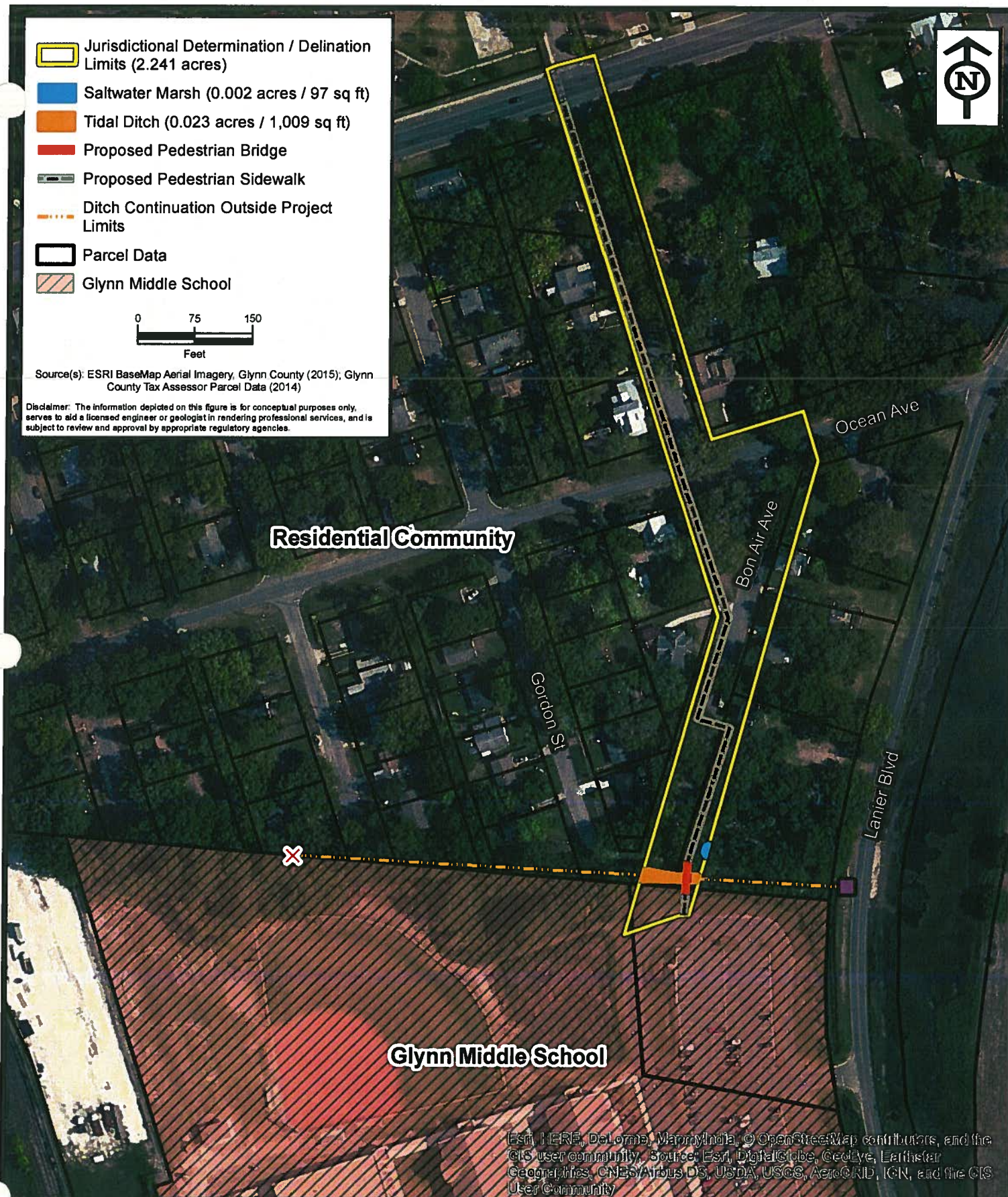
Project:	ES16007.00
Date:	Aug. 2017
Drwn/Chkd:	KHS/MJD
Figure:	2

-  Jurisdictional Determination / Delineation Limits (2.241 acres)
-  Saltwater Marsh (0.002 acres / 97 sq ft)
-  Tidal Ditch (0.023 acres / 1,009 sq ft)
-  Proposed Pedestrian Bridge
-  Proposed Pedestrian Sidewalk
-  Ditch Continuation Outside Project Limits
-  Parcel Data
-  Glynn Middle School



Source(s): ESRI BaseMap Aerial Imagery, Glynn County (2015); Glynn County Tax Assessor Parcel Data (2014)

Disclaimer: The information depicted on this figure is for conceptual purposes only, serves to aid a licensed engineer or geologist in rendering professional services, and is subject to review and approval by appropriate regulatory agencies.



Esri, HERE, DeLorme, MapmyIndia, © OpenStreetMap contributors, and the GIS user community, Source: Esri, DigitalGlobe, GeoEye, Earthstar Geographics, CNES/Airbus DS, USDA, USGS, AeroGRID, IGN, and the GIS User Community



ENVIRONMENTAL SERVICES, INC.

101 B Estus Drive
Savannah, GA 31404
(912) 236-4711
(912) 236-3668 Fax

www.environmentalservicesinc.com

Waterway Features

City of Brunswick - Glynn Middle School

Glynn County, Georgia Marsh & Shore Mgt. Program

GA DNR

SEP 27 2017

Project: ES16007.00

Date: Aug. 2017

Drwn/Chkd: KHS/MJD

Figure: 3



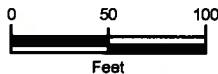
Residential Community

Alternative 2

Alternative 1

Glynn Middle School

- Alternative Sidewalk Routes
- Proposed Pedestrian Bridge
- Proposed Pedestrian Sidewalk
- Ditch Continuation Outside Project Limits
- Saltwater Marsh
- Tidal Ditch
- Glynn Middle School



Source(s): ESRI BaseMap Aerial Imagery, Glynn County (2015); Glynn County Tax Assessor Parcel Data (2014)

Disclaimer: The information depicted on this figure is for conceptual purposes only, serves to aid a licensed engineer or geologist in rendering professional services, and is subject to review and approval by appropriate regulatory agencies.

Source: ESRI, DigitalGlobe, GeoEye, Earthstar Geographics, CNES/Airbus DS, USDA, USGS, AeroGRID, IGN, and the GIS User Community



ENVIRONMENTAL SERVICES, INC.

101 B Estre Drive
Savannah, GA 31404
(912) 236-4711
(912) 236-3668 Fax

www.environmentalservicesinc.com

Project Alternatives

City of Brunswick - Glynn Middle ^{GA DNR} **Sidewalk**

Glynn County, Georgia **SEP 27 2017**

Project: ES16007.00

Date: Aug. 2017

Drwn/Chkd: KHS/MJD

Figure: 4

