

VICINITY MAP

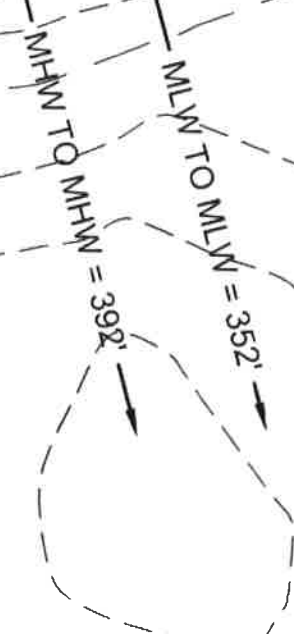
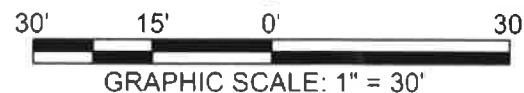
TOTALS:	
EXISTING DOCK:	1080 SF
ALUMINUM GANGWAY:	104 SF
EXISTING PIER:	1194 SF
TOTAL FACILITY:	2378 SF

EX. 4'x26' ALUMINUM GANGWAY
EX. 8'x135' FLOATING DOCK

EX. 8' WIDE ALUMINUM FIXED PIER

EX. CONC. PAD

REDBIRD CREEK



SHEET 1 OF 3

EMC ENGINEERING SERVICES, INC.
10 Chatham Center South,
Ste 100
Savannah, GA 31405
Ph: (912) 232-6533
Fax: (912) 233-4580
savannah@emc-eng.com
www.emc-eng.com

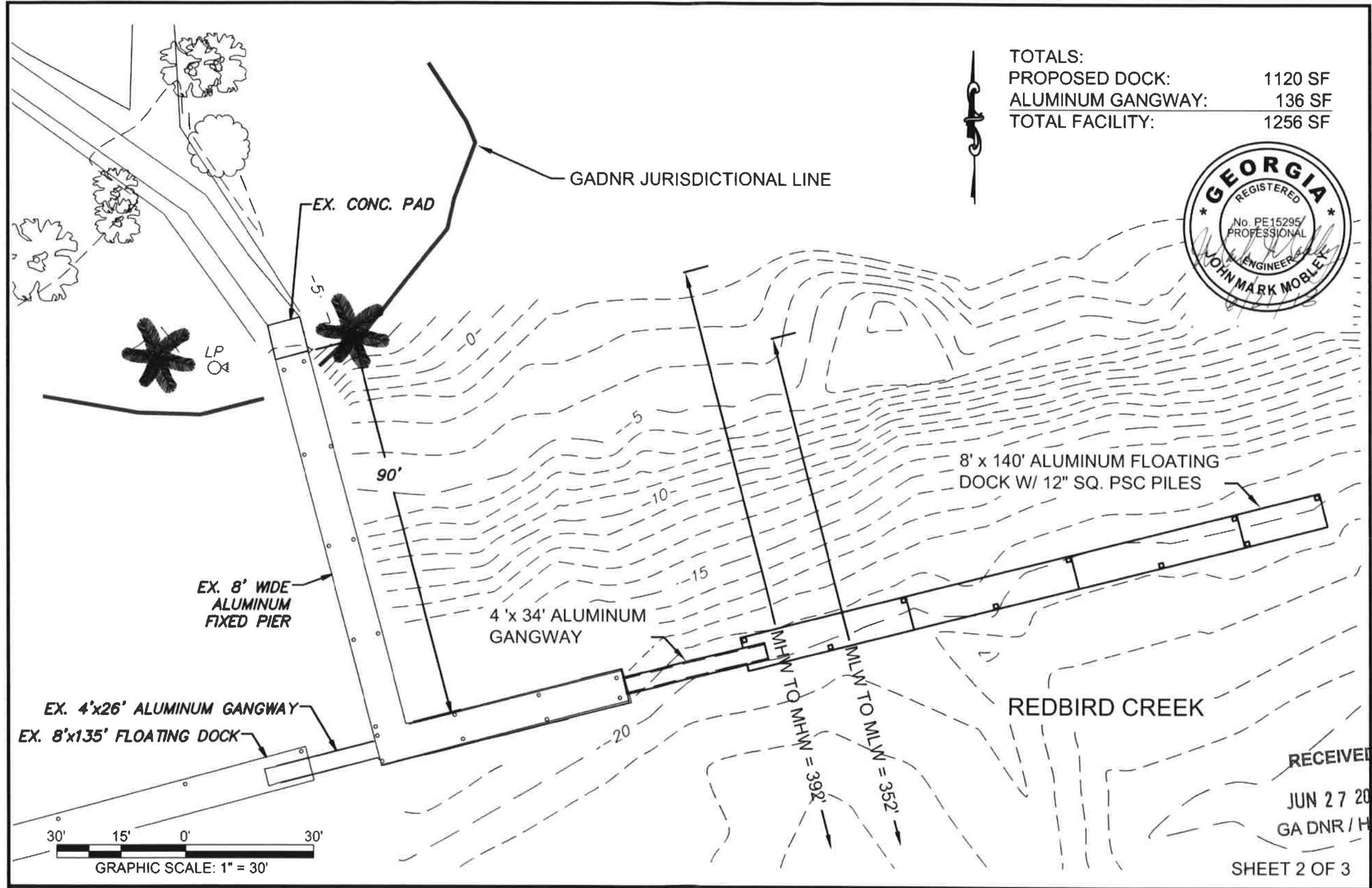
ALBANY, ATLANTA, AUGUSTA, BRUNSWICK,
COLUMBUS, STATESBORO & VALDOSTA

EXISTING DOCK PLAN
FORT McALLISTER STATE PARK DOCK EXPANSION
ON REDBIRD CREEK
BRYAN COUNTY, GEORGIA

Prepared for:
DEPARTMENT OF NATURAL RESOURCES

RECEIVED
JUN 27 2018
GA DNR / HMP

PROJECT NO:	17-2108
DRAWN BY:	WCS
DESIGNED BY:	JMM
SURVEYED BY:	-
SURVEY DATE:	-
CHECKED BY:	JMM
SCALE:	1" = 30'
DATE:	FEB. 2018



TOTALS:

PROPOSED DOCK:	1120 SF
ALUMINUM GANGWAY:	136 SF
TOTAL FACILITY:	1256 SF



RECEIVED
 JUN 27 2018
 GA DNR / HMP

SHEET 2 OF 3

EMC ENGINEERING SERVICES, INC.
 10 Chatham Center South,
 Ste 100
 Savannah, GA 31405
 Ph: (912) 232-6533
 Fax: (912) 233-4580
 savannah@emc-eng.com
 www.emc-eng.com

emc
 CIVIL
 MARINE
 ENVIRONMENTAL

ALBANY, ATLANTA AUGUSTA, BRUNSWICK,
 COLUMBUS, STATESBORO & VALDOSTA

PROPOSED DOCK PLAN

FORT MCALLISTER STATE PARK DOCK EXPANSION

ON REDBIRD CREEK

BRYAN COUNTY, GEORGIA

Prepared for:
DEPARTMENT OF NATURAL RESOURCES

PROJECT NO:	17-2108
DRAWN BY:	WCS
DESIGNED BY:	JMM
SURVEYED BY:	-
SURVEY DATE:	-
CHECKED BY:	JMM
SCALE:	1" = 30'
DATE:	FEB. 2018