



COASTAL RESOURCES DIVISION
ONE CONSERVATION WAY • BRUNSWICK, GA 31520 • 912.264.7218
COASTALGADNR.ORG

MARK WILLIAMS
COMMISSIONER

DOUG HAYMANS
DIRECTOR

NOV 26 2019

Laura Bryant
Boneyard Pictures, LLC
Blackhall Studios
1415 Constitution Rd, SE, Bungalow 200
Atlanta, GA 31316

Re: Letter of Permission (LOP), Film Production and Related Activities, Boneyard Pictures LLC, South Dunes Beach Park to the Glory Beach, Water Tower Beach Access Point, Great Dunes Beach Access Point, Jekyll Island, Glynn County, Georgia

Dear Ms. Bryant:

This Letter of Permission (LOP) is in response to your request received November 15, 2019 and re-submitted on November 18th, to film a scene for the movie "The Tomorrow War." The proposed project includes the temporary use of production equipment and specified vehicles within the State's Shore Protection Act (SPA) jurisdiction between South Dunes Beach Park and Glory Beach on Jekyll Island. Filming within the State's jurisdiction will begin no sooner than 15 days from the date of this letter and will be completed no later than January 30, 2020.

Filming & Rain Dates:

Set-up and/or filming will occur on one-day between December 11, 2019 and January 30, 2020. All scenes will be filmed during daylight and sunlight hours, while set-up and strike may occur during early morning or nighttime hours. Approximate crew call time is at 5:30am and will continue until approximately 8pm and prep will access the site at approximately 3am.

Filming Location

Filming will occur on the beach seaward of the toe of the dunes and landward of the ordinary high-water mark, located at approximately 31.025663 -81.417721, and will consist of 2 cast members and up to 65 crew members, although not all will be present at the shooting location. A detailed location of the film and staging location can be found in the attached map. To ensure there will be no encroachment into the vegetated sand dunes by equipment or crew, 3 ft. wooden stakes will be hammered into the beach area to mark the beach/dune interface.

Beach Access Locations

Access into jurisdiction for both people and equipment will be using Jekyll Island's Approved Beach Access Points at:

1. Water Tower Beach Access
2. Great Dunes Beach Access

NOV 26 2019

Boneyard Pictures, LLC- LOP
Page 2 of 4

Equipment in Jurisdiction

Accessing the filming location using the Water Tower Beach Access:

- Humvee
- Two gators with small trailer attached
- Camera vehicle known as the Grip Trix
- Electrical fans (pulled into place by a gator)
- Four suitcase generators (pulled by a gator or hand truck)
- Absorbing mats and mud mats
- Movie lights and camera equipment
- Lull or Pedibone
- Up to four portable Light Towers
- Stake bed truck
- 3' wooden stakes in the soft and hard sand of the beach
- Portable Heaters

Accessing the filming location using the Great Dunes Beach Access:

- Stake bed truck that will have 12amp generator mounted on the bed of the truck
- 6500 putt-putt generator (that will be pulled by the stake bed)
- Lull or Pedibone (will use mud mats to leap frog to/from filming area)

To prepare for filming:

- On the day of filming, the existing beach sand in the filming area will be hand raked to remove any footprints or Humvee tire tracks. The proposed raked area is approximately 20 yards x 50 yards and up to three inches deep. At the completion of filming, Production crew will spread out any sand over a large area to make it consistent with the natural topography and fully restore the beach to its natural state.
- JIA will remove all "Stay Off Dunes" and other specified signage such as the "beach access 11" sign that may interfere with filming.
- On the day prior to filming, two platforms, approximately 8 ft. W x 12 ft. L x 18 in. H will be placed landward of ordinary high-water and seaward of the toe of the dunes, at approximately 31.026562 -81.417168, and will be weighted down using sand-bags. A uniformed security guard will be stationed near the platforms to ensure safety and to make sure the platforms are secure.
- On the day of filming, cable will be strung through the JIA's Water Tower Beach Access point. There will be approximately 8 cables with a diameter the size of a regular lawn hose. For the purpose of filming, all visible cables will be temporarily covered using the existing sand.
- Mud Mats will be temporarily placed along the approved beach access points.

One scene will take place within SPA jurisdiction. The scene will start on the asphalt road known as Beachview Drive S. The main vehicle, the Humvee, is being chased by 'another vehicle'. This 'vehicle' will be a Grip Trix electric vehicle that the camera will be mounted on. The Humvee turns into the entrance of the JIA Access Road heading toward the beach with the other the vehicle in close pursuit. The vehicles will turn either north or south onto the packed sand. The characters

NOV 26 2019

Boneyard Pictures, LLC- LOP
Page 3 of 4

get out of their vehicles and have a conversation. Two of the characters will be rescued by a simulated helicopter by using large electric powered fans.

Public Access

Public access will temporarily be closed on the beach from the low waterline to the toe of the seaward most dune from the South Dune Park Beach to the Glory Beach on the day of filming. A member of the Company will be on-site to re-direct pedestrians for the duration of filming.

General Provisions:

- This LOP does not give permission to hand-trim dead vegetation within the State's SPA jurisdiction.
- At both specified vehicular access points, all production equipment will access the production location across temporary, pre-fabricated mats placed along a travel corridor that is landward of ordinary high water and seaward of the dunes. Mats will help minimize impacts to the ecosystem at the location while allowing for vehicular ingress & egress across the dry sand beach. The travel corridor will enhance public safety, protect the integrity of the dynamic dune field and existing emergent vegetation at each location.
- Crew, vehicles, and/or equipment may not enter the sand dunes area.
- At the end of production, all matting, equipment, and debris will be removed, and the beach will be hand raked in a manner to be consistent with topography of the immediate surrounding areas.
- Although public access may be temporarily restricted, all efforts shall be made to allow reasonable public access to the beach at and around the filming location.
- Due to the presence of shorebirds, particularly Piping plover, Red Knot, and Wilsons Plover, a JIA or WRD representative will need to be on-site to document the presence or absence of priority shorebirds within the project area. Monitoring will include shorebird response to the filming, including return to the area after filming is completed.
- Prior to placement of the 3 ft. stakes, a DNR representative may coordinate on-site to ensure the placement is outside of dune and vegetated dunes.
- Removal of all signs within jurisdiction need to be replaced within 24-hours of the filming event.
- The portable heaters need to be placed on platforms or on mats within jurisdiction.

The Department authorizes the filming as depicted in the attached description. The Department may inspect all areas as described above during and at the termination of the temporary activities to ensure that those areas are in a condition consistent with the authorization granted by this LOP. No jurisdictional vegetation is to be disturbed during approved activities. **No unauthorized equipment, materials, or debris may be placed, disposed of, or stored in jurisdictional areas.** Any incidental damage or impacts associated with this project must be rectified by fully restoring areas to their pre-construction topographic and vegetative state as determined by the Department.

This LOP is valid for the above referenced project. Any change in the use, location, dimensions, or configuration of the approved project, without prior notification and approval from this office could result in revocation of this permission and in the required removal of the materials and

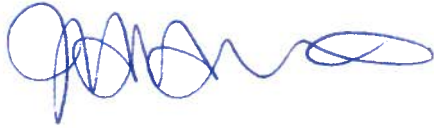
NOV 26 2019

Boneyard Pictures, LLC- LOP
Page 4 of 4

related structures. This project must comply with all other Federal, State, and local statutes, ordinances and regulations.

If you have any further questions or concerns regarding this or any other projects, please feel free to contact Amy Flowers at (912) 262-3109.

Sincerely,



Jill Andrews
Chief, Coastal Management Section

Enclosures: Description and Pictures
Cc: Yank Moore, JIA
File: LOP20190180

G H O S T D R A F T

November 18, 2019

Mr. Josh Noble
Georgia Department of Natural Resources
1 Conservative Way
Brunswick, GA 31520

RE: **REVISED** Letter of request, 'Ghost Draft', Boneyard Pictures, LLC, filming near the state's shore jurisdiction at Jekyll Island, Georgia.

Dear Mr. Noble,

Boneyard Pictures, LLC, is requesting permission to film in and around the state's shore jurisdiction on Jekyll Island, Georgia. We are proposing one filming location and two beach access locations with the following activities at each location:

Key location – 'escaping from the bad people' – our Humvee leaves the main road and enters the JIA authorized, established beach access entrance located across from the Water Tower. The JIA authorized beach entrance would be closed to the public during this time.

Permission to have JIA hand-trim any dead vegetation in the state's jurisdiction in the proposed film site of the natural vegetation on the access road leading to the beach.

The following activities are proposed for the scene referred to as '**escaping from the bad people**'. This scene takes place starting on the asphalt road known as Beachview Drive S. The main vehicle, the Humvee, is being chased by 'another vehicle'. This 'vehicle' will be a Grip Trix electric vehicle that the camera will be mounted on. I've included a photo of the Grip Trix. The size of the Humvee is 78" tall, 84" wide and 190" long and weighs approximately 7,500lbs. The Humvee turns into the entrance of the JIA Access Road heading toward the beach with the other the vehicle in close pursuit. The vehicles will turn either north or south onto the packed sand. The characters get out of the car and have a conversation. One of the characters shoots a flare from a flare gun into the sky. The flare will be shot up and toward the water. The flare will not be pointed toward the main land at any time. Company will have uniformed, off duty Georgia State Patrol with us at all times during filming. Prior to flare gun being shot, Company will have GSP notify their dispatch and any other government official necessary, i.e. BWK Police, St Simons Police and any Marine Patrol Division. GSP will give these entities a block of time this

scene will need in order to complete. Company will have fire extinguishers on site at all times during this scene.

Two of the characters will be 'rescued by a helicopter'. Company is seeking permission to create 'wind from a helicopter' by using large electric powered fans. These fans are electrical and do not leave any residue. The fans will be powered by our generator that will be brought in on a Stake Bed truck. The 12amp generator will be mounted and stay on the Stake Bed Truck. Permission is requested to have a 6500w putt-putt generator on the sand that will have an absorbing mat placed underneath at all times.

Company is seeking permission to drive a 'Lull' or Pettibone onto the beach using the JIA's Beach Access Road across from the Water Tower. There is a possibility this Lull may have to enter from the Great Dunes Beach Access. If this is the case, Company will leap frog mud mats for the Lull to ride over. Once in place near the filming area, Company will build a 'flyswatter' that is a 20x20 screen to create an even light effect that attaches to the Lull. Company will place an absorbing mat under the Lull/Pettibone to ensure no fuel or oil will spill onto the sand. The Lull will enter the beach using the Water Tower Beach Access Road or by using the Great Dunes Beach Access. Once Company hits any soft or packed sand the Lull will have mud mats (see attached photo) placed under the wheels.

Company is seeking permission to access the Access Road or the Great Dunes Beach Access Point and the beach at 3am with the Lull. The flyswatter will be assembled on the beach, then lifted into the air and kept in place on the Access Road until filming begins and the tide allows. Once the tide has receded enough the Lull with the flyswatter will land on the beach and stay until filming is complete. Once filming is complete, the flyswatter will be dismantled and the Lull will leave the same way it entered.

In order for Company to work in a safe environment, Company is asking permission to have three to four light towers on the beach. The light towers will be put in place using a gator and will be removed from the beach with any incoming tides. Once prep is complete the light towers will be removed. The light towers will be put back in place on the beach during any breakdown of Company equipment and end of filming day. Once breakdown is complete, all equipment will be removed from the beach and any Access Roads. If the parking lots are not sufficiently lit, Company will place a light tower in the asphalt parking lot of the Great Dunes Parking lot, the Water Park and in the fenced in area of the Water Tower. Or if permission is granted, on the grass area just outside the fenced in area of the Water Tower making sure that these lights will not impede drivers or cyclists.

Company is seeking permission to use 3' wooden stakes in the soft or hard sand. These stakes will be hammered into the beach area with a sledge hammer and the stakes will be

removed once filming is complete. These wooden stake markers will be used to keep all crew and equipment from any dune activity.

Company is seeking permission to have four Suit-Case Generators on the proposed filming area. These portable generators are gas generated and will be placed on top of an absorbing mat to ensure no fuel or oil will spill onto the sand.

The temporary activities at this entrance and on the beach include the placement of movie lights and camera equipment on the soft sand area on the south side of the JIA's Access dirt road, prior to entering the actual beach. There is no vegetation at this particular area and crew will not walk into or place any equipment in the grass dune area.

Once the two picture vehicles enter the beach area the Company is requesting permission to have the Humvee drive on the edge of the water between the low and high tide watermark.

The Company is requesting permission to have a total of six 4-wheeled gators (and or golf carts) with small trailers attached for the purpose of hauling production equipment and or talent. **ONLY TWO GATORS WILL BE ON THE BEACH AT ANY ONE TIME.** The other four will have equipment on them ready to enter beach when the two on the beach comes off. The other gators will be outside the gate of the Water Tower and on the side of the JIA's entrance to the beach. The gators will be driven by Teamsters and not individual crew members and the Teamsters obey their boss. For all of the production work taking place on the beach at this location, production equipment consists of lighting equipment, grip equipment, set dressing, a camera and dolly track. The gators will be used by camera department for their camera equipment only, electric for their heavy cables and lights, the grip department with pipes and drapes and for props. The Vehicles will not drive in or enter the sand dune area.

While on the beach seaward of the JIA's entrance, permission to hand rake and/or hand broom the existing sand to remove any footprints or Humvee tire tracks from crew and talent. Proposed area to be raked is approximately 20 yards x 50 yards and three inches deep. At the completion of this scene, Production crew will spread out any sand over a large area to make it consistent with the natural topography and fully restore the area to its natural state. Within this work area, the Company is asking permission to have JIA temporarily remove all signage and posts at the entrance to the Access Road and in the dunes and the surrounding area.

All equipment needed for filming will access the beach by using the existing JIA Water Tower access point and the Great Dunes Beach Access point. At all times both parking lots of the Great Dunes Parking Lot and the Glory Beach will remain open to the public.

Company may take up to six to eight parking spaces for any equipment not actually being used but needed on standby.

The generator for all of the above locations will be on a Stake Bed. The Company is requesting permission to run cable through the JIA's Beach Access point across from the Water Tower. Cables are the size of a regular lawn hose. Approximate total cables are eight. These cables will be covered up using the existing sand from that area and covered up just enough where the camera will not notice them.

Company is requesting permission to use Mud Mats that will be temporarily placed from possibly both access roads to the soft sand leeward of the high-water mark to the packed sand.

Our tentative shoot day is for one day between December 6th and December 30th, 2019. Weather and actor permitting, the current proposed film day is Monday, December 9, 2019. We will be filming this scene during daylight and sunlight hours with approximate crew call time of 5:30am and will continue until approximately 8pm. A prep crew would start at approximately 3am.

All production vehicles will be parked in designated parking lots. Production is seeking permission to park our approximately twenty-five Production Trucks and any personal crew vehicles (approximately 95) in the parking lot of the Jekyll Island Water Slide.

Production is also seeking permission to have access to the fenced in area of the Water Tower for three to four of our Working Trucks (essential trucks that have our filming equipment needs in them) inside the Water Tower fenced in area. Company is seeking permission to park on the east and west side of Beachview Drive South being mindful to not park over the sidewalk and not park on the actual road. Company will have uniformed, off duty GSP on each end of our footprint. The gators will load up from these working trucks and will stay off the beach until one or both of the gators on the beach comes off.

If weather is an issue during our proposed filming dates, our schedule could change but is projected to occur between December 6 and December 30, 2019.

For our filming location, Company is asking permission to temporarily close the beach and to control the beach to all pedestrians / public access from the low waterline to the soft sand from the South Dune Park Beach to the Glory Beach. Production will post a Production Assistant at each end of this requested closed beach area. The Production Assistant, when pedestrian approaches our filming area, will explain to pedestrian(s) what is going on and if they could wait to enter our filming area when our filming is complete.

Company is seeking permission to have JIA temporarily remove a sign on the beach, north of the Water Tower entrance, that is marked with '#11". Company is also seeking permission to set up Company's Video Village while filming on the beach in this area close to the scarp line. Prior to filming, Company is requesting permission the day before filming to assemble two platforms using pre-fabricated steel and aluminum pipes and joints and pre-cut wooden deck. These two platforms are 8'w x 12'l x 18"h. Permission to place these two platforms the day prior to filming and remove said platforms on the day filming is complete. The platforms will be next to each other. The platforms will hold production equipment such as grip and electric support and Video Village. Crew will be standing and or sitting in chairs on these two platforms. This area of soft sand does not have any grass evident. The platforms will be landward of the ordinary high-water mark and seaward of the tow of the dune. Company is fully aware of no trespassing or having any equipment in or on the dunes. The platforms will be weighted down with sandbags. Company will also have a uniformed security guard stationed near the platforms to ensure safety and to make sure the platforms are secure at all times.

Company is requesting permission to temporarily have propane powered heaters on wheels on set on the beach. These portable heaters will be near crew and talent to keep them warm.

Sincerely,
Laura Bryant
Laura Bryant
Assistant Location Manager, *GHOST DRAFT*
Boneyard Pictures, LLC
Blackhall Studios
1415 Constitution Rd, SE, Bungalow 200
Atlanta, GA 30316
404-458-1540

Personal Address:
237 Andrews Road
Savannah, GA 31410
912-667-4192 cell

GHOST DRAFT EQUIPMENT LIST FOR WATER TOWER ACCESS:

1. Humvee
2. Two gators with small trailer attached
3. Camera vehicle known as the Grip Trix
4. Electrical fans (pulled into place by a gator)
5. Four suit case generators (pulled by a gator or hand truck)
6. Movie lights and camera equipment
7. Lull or Pedibone
8. Up to four portable Light Towers
9. Stake bed truck

EQUIPMENT LIST FOR GREAT DUNES BEACH ACCESS:

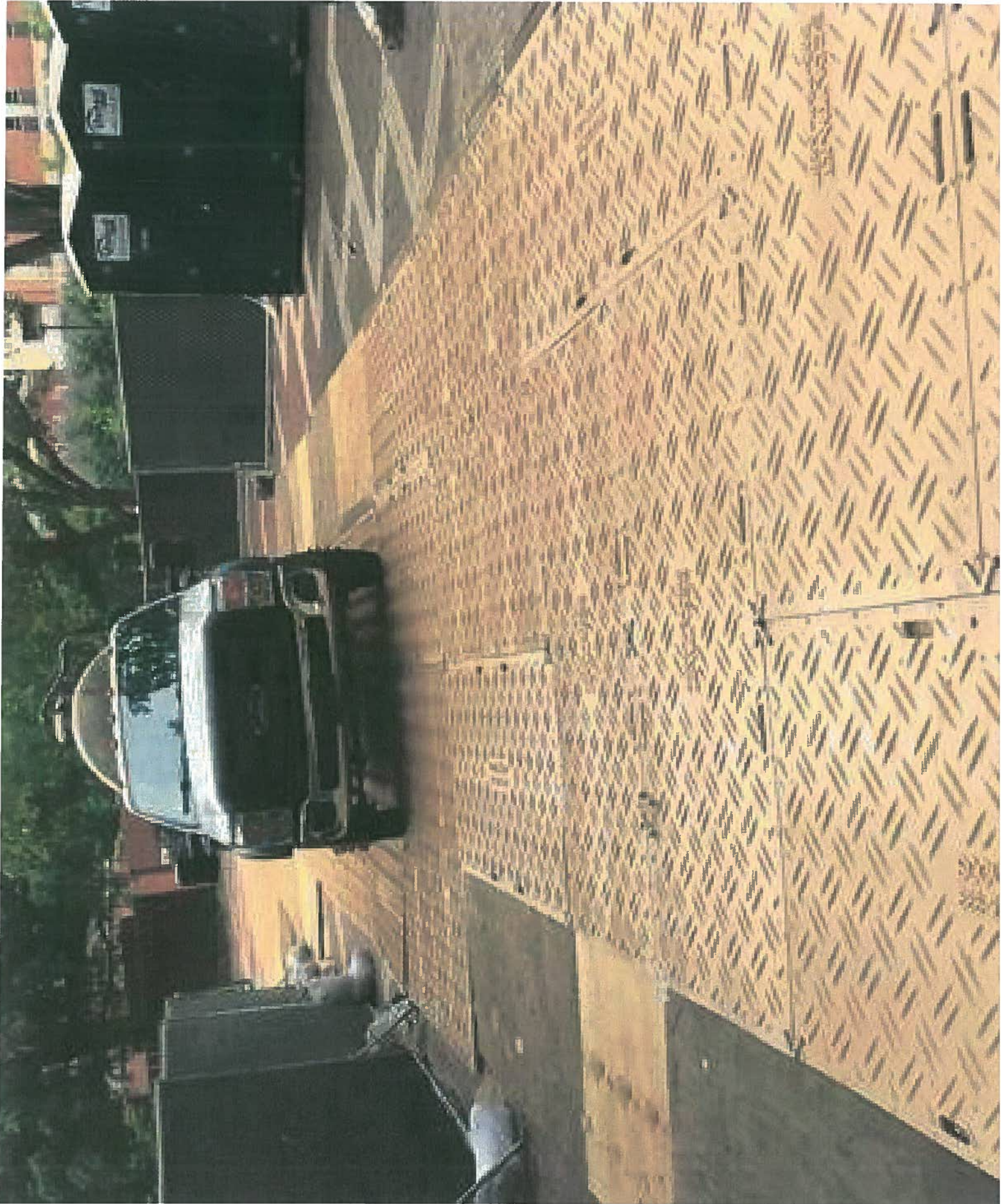
1. Stake bed truck that will have 12amp generator mounted on the bed of the truck
2. 6500 putt-putt generator (that will be pulled by the stake bed)
3. Lull or Pedibone

LAT / LONG OF PROPOSED FILMING AREA:

31°01'32.4"N+81°25'03.8"W/@31.025653,-81.4196268,558m/data

The X is the area for the proposed two platforms.







Osprey Bangalow @
Ocean Oaks - 5 Br Home

Hampton Inn &
Suites Jekyll Island

South Dunes Picnic Area

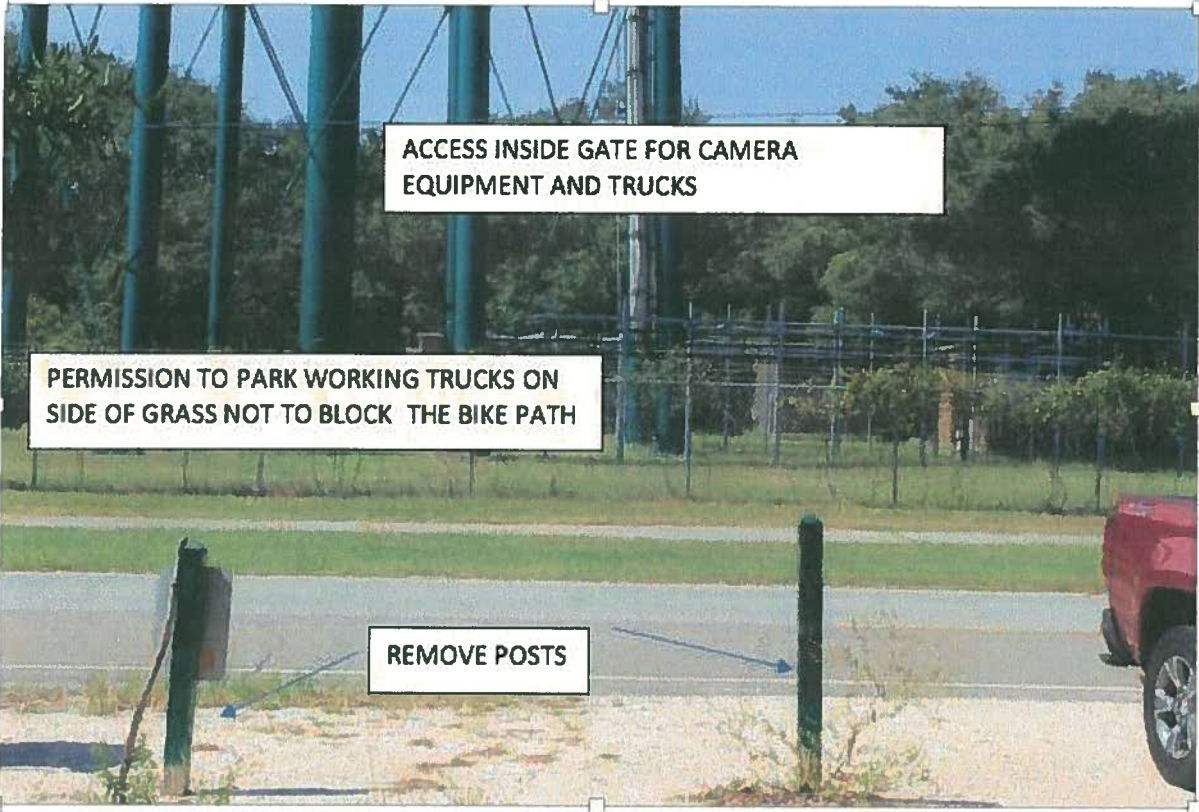
S Riverview Dr

S Loop Trail

S Loop Trail

Jekyll Island
Soccer Complex

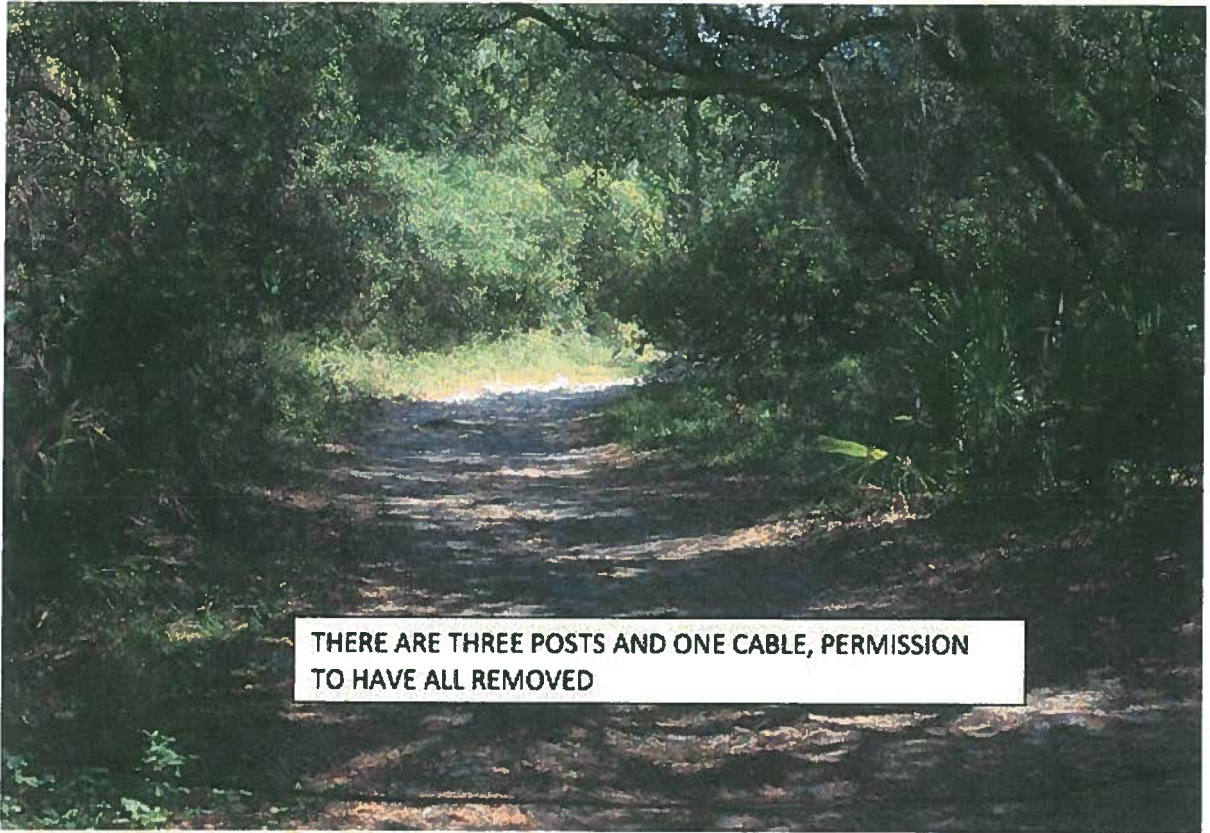
beach entrance
and all beach action



**ACCESS INSIDE GATE FOR CAMERA
EQUIPMENT AND TRUCKS**

**PERMISSION TO PARK WORKING TRUCKS ON
SIDE OF GRASS NOT TO BLOCK THE BIKE PATH**

REMOVE POSTS



**THERE ARE THREE POSTS AND ONE CABLE, PERMISSION
TO HAVE ALL REMOVED**

Permission to bring in cable from the Beachview Drive, S. area and run through the area that has no active dune activity.



Permission to have JIA temporarily remove sign and post. Permission to temporarily stage camera and crew in the soft sand directly behind/beside this sign. Crew will not enter in the dune area.



Entrance to beach using JIA Access Road. Humvee would cross over Soft Sand and stop on packed sand where Humvee would travel north



or south.

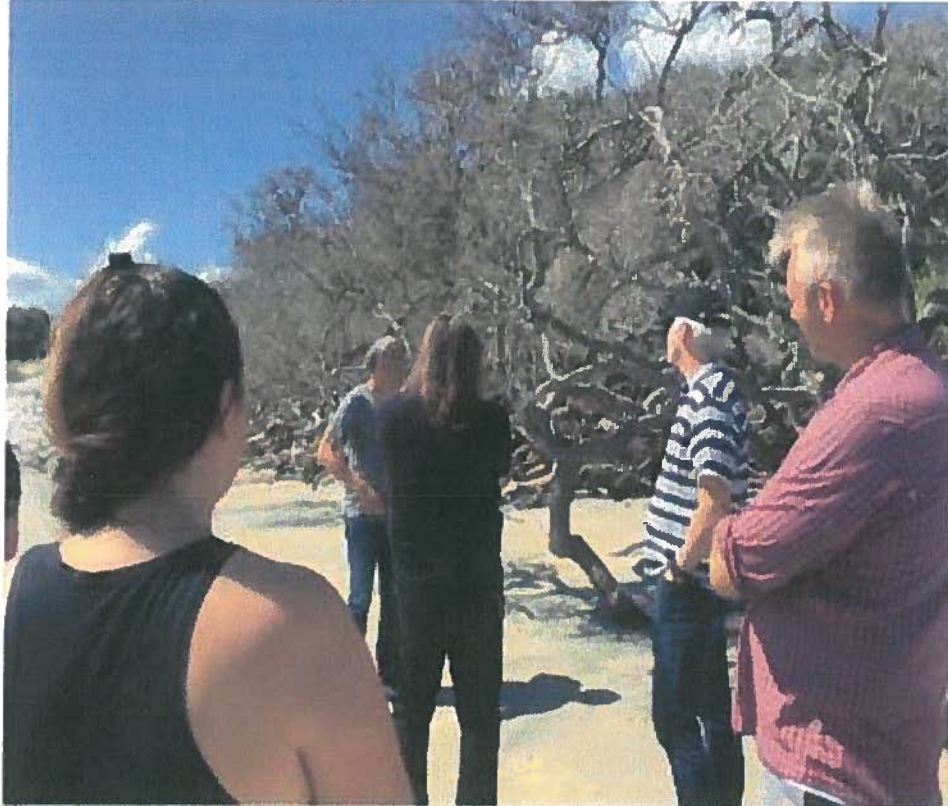
JIA to temporarily remove this green sign and the post. This is the proposed area Company is seeking permission to build two platforms, 8'w x 12'long x 18"h, above the high- water mark on the soft sand.



This area of the beach is where our Picture Vehicle will drive onto the hard-packed sand. This is also the approximate area where our fans will be place to create 'wind from a helicopter'.



Conversation on beach on the hard packed sand



Low water mark where Humvee would drive parallel with water. As tide rises, Humvee would drive closer to High water mark.



Production Assistant staged at Great Dune Access to control pedestrian beach access to filming area.

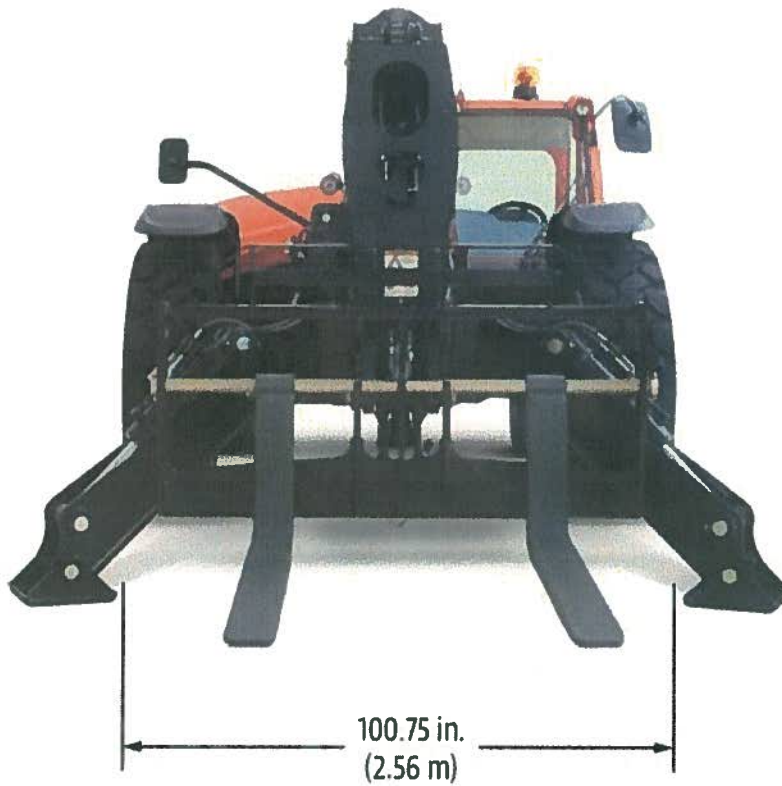


Permission to have Production Assistant staged at the leaning palm in the distance to control pedestrian beach access in our filming area



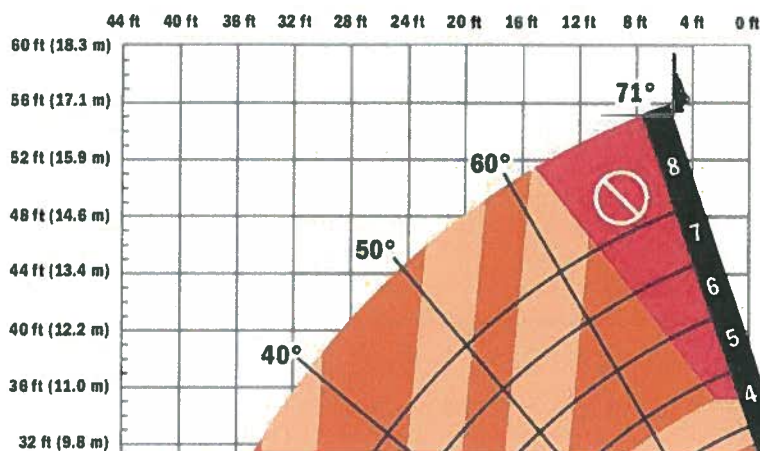


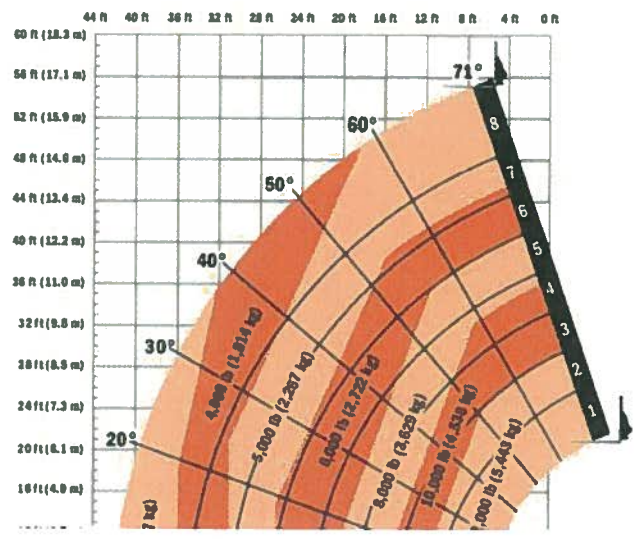
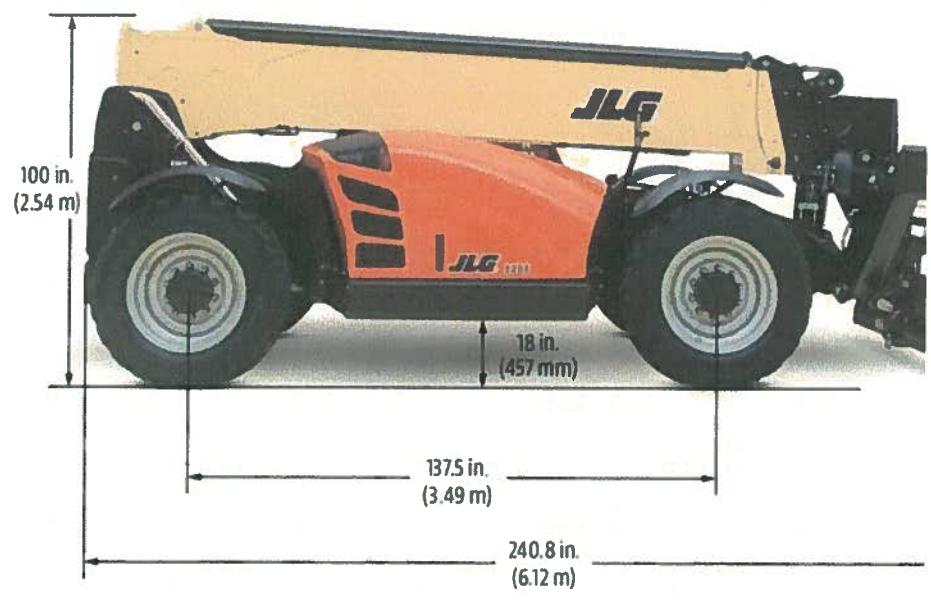
All dimensions are approximate.



10
(2.)

Load Chart









Flowers, Amy

From: Yank Moore <ymoore@jekyllisland.com>
Sent: Friday, November 22, 2019 9:31 AM
To: Flowers, Amy
Subject: Tomorrow War

CAUTION: This email originated from outside of the organization. Do not click links or open attachments unless you recognize the sender and know the content is safe.

The Jekyll Island Authority gives permission as the landowner for the activities outlined in the most recent LOR from Laura Bryant and the Boneyard Pictures LLC, with a basic requirement of having a representative from the JIA on site before and trimming or activities within the special protection area.

Thanks
Yank Moore

Yank Moore, Conservation Land Manager
The Jekyll Island Authority
Phone: (912) 635-4187 | **Cell:** (912) 215-9374 | **Fax:** (912) 717-6861
Wildlife Response Cell (24/7): (912) 222-5992
Email: ymoore@jekyllisland.com



Privileged/Confidential Information may be contained in this message. If you are not the addressee indicated in this message (or responsible for delivery of the message to such person), you may not copy or deliver this message to anyone. In such case, you should destroy this message and kindly notify the sender by reply email. Opinions, conclusions and other information in this message that do not relate to the official business of the Jekyll Island Authority shall be understood as neither given nor endorsed by it.

Flowers, Amy

From: laura bryant <laurabryant2009@gmail.com>
Sent: Tuesday, November 26, 2019 1:27 PM
To: Flowers, Amy; Noble, Josh
Subject: Fwd: FW: [Non-DoD Source] Fwd: filming movie using flare gun on jekyll

CAUTION: This email originated from outside of the organization. Do not click links or open attachments unless you recognize the sender and know the content is safe.

----- Forwarded message -----

From: Crowe, Rachel M MST1 <Rachel.M.Crowe@uscg.mil>
Date: Tue, Nov 26, 2019 at 1:25 PM
Subject: RE: FW: [Non-DoD Source] Fwd: filming movie using flare gun on jekyll
To: laura bryant <laurabryant2009@gmail.com>
Cc: D07-DG-MSUSavannah-WWM <MSUSavannah-WWM@uscg.mil>

Good afternoon Laura,

I was able to get an answer and you are good to go for the flare shooting. We have done a Marine Safety Information Broadcast (MSIB) that will get posted on Homeport.

Per our phone conversation, any future events between Savannah and Brunswick need to go through our office, and I copied our waterways email on here. You should send all correspondence through that email in case I'm out of the office.

V/R,

MST1 Rachel Crowe

U.S. Coast Guard MSU Savannah

100 W. Oglethorpe Ave, Ste. 1017

Savannah, GA 31401

912-652-4353, ext 243

"Pura Vida"

From: laura bryant <laurabryant2009@gmail.com>
Sent: Monday, November 25, 2019 10:22 AM
To: Crowe, Rachel M MST1 <Rachel.M.Crowe@uscg.mil>
Subject: Re: FW: [Non-DoD Source] Fwd: filming movie using flare gun on jekyll

oh goodness, I have no idea! i thought all were the same color but I can find out.

morning rachel!

lb

On Mon, Nov 25, 2019 at 10:19 AM Crowe, Rachel M MST1 <Rachel.M.Crowe@uscg.mil> wrote:

Good morning Laura,

Thank you for getting back to me. What color is the flare going to be? Most are red, but want to verify for our paperwork.

V/R,

MST1 Rachel Crowe

U.S. Coast Guard MSU Savannah

100 W. Oglethorpe Ave, Ste. 1017

Savannah, GA 31401

912-652-4353, ext 243

"Pura Vida"

From: laura bryant <laurabryant2009@gmail.com>
Sent: Friday, November 22, 2019 11:28 AM
To: Crowe, Rachel M MST1 <Rachel.M.Crowe@uscg.mil>
Cc: D07-DG-MSUSavannah-WWM <MSUSavannah-WWM@uscg.mil>
Subject: Re: FW: [Non-DoD Source] Fwd: filming movie using flare gun on jekyll

good morning rachel,

thank you for reaching out to me regarding our proposed filming activities involving a flare gun. my responses are next to your questions.

On Fri, Nov 22, 2019 at 10:34 AM Crowe, Rachel M MST1 <Rachel.M.Crowe@uscg.mil> wrote:

Good morning Laura,

I am MST1 Rachel Crowe at Coast Guard Marine Safety Unit (MSU) Savannah and I will be assisting you with your filming request. I reviewed your request and had a couple of questions.

Do you have a more concrete location of where the Humvee will be when the flare is shot off? OUR FILMING TAKES PLACE ON THE BEACH ACROSS FROM THE WATER TOWER THAT IS ON BEACHVIEW DRIVE S. THIS IS THE LAT/LONG :31°01'32.4"N+81°25'03.8"W/@31.025653,-81.4196268,558m/data . OR WHAT I THINK IS THE CLOSEST POINT. What is the timeframe for the flare shot? RIGHT NOW ALL I KNOW IS IT'S DURING DAY LIGHT HOURS. I CAN TELL YOU BETTER A COUPLE OF DAYS PRIOR TO OUR SCHEDULED SHOOT DAY OF DEC 9TH. Is it just one flare or multiple flares? ONE FLARE AT A TIME, DEPENDING ON HOW MANY TAKES, WE COULD POTENTIALLY DO THIS SCENE 3 - 4 TIMES. Will there be any weather contingency days in case it's bad on December 9? YES, BUT MORE THAN LIKELY WOULD BE THE DAY OR TWO AFTER THE 9TH.

We will be posting a Marine Safety Information Broadcast (MSBI) and a Broadcast Notice to Mariners (BNM) will go out over the radio.

Please let me know if you have any questions or concerns. I also copied our waterways email on here, so please reply to all. There are three others on there and can assist in case I'm out of the office. THANK YOU SO MUCH RACHEL, AND IF I DIDN'T ANSWER SOMETHING PLEASE LET ME KNOW. I WISH I COULD BE MORE SPECIFIC WITH TIMES BUT I DON'T KNOW IF THE ASSISTANT DIRECTOR WHO DOES THE FILMING SCHEDULE HAS THOUGHT ABOUT ORDER OF SCENES QUITE YET.

LB

Have a great day!

V/R,

MST1 Rachel Crowe

U.S. Coast Guard MSU Savannah

100 W. Oglethorpe Ave, Ste. 1017

Savannah, GA 31401

912-652-4353, ext 243

"Pura Vida"

From: Bloch, Lauren LT <Lauren.E.Bloch@uscg.mil>

Sent: Friday, November 22, 2019 9:57 AM

To: Crowe, Rachel M MST1 <Rachel.M.Crowe@uscg.mil>

Subject: FW: [Non-DoD Source] Fwd: filming movie using flare gun on jekyll

Very respectfully,

LT Lauren Bloch

U.S. Coast Guard

Shoreside Compliance Division

Marine Safety Unit Savannah

100 W. Oglethorpe Avenue, Suite 1017

Savannah, GA 31401

Office: (912) 652-4353 x232

From: Ray, Chad L LT <Chad.L.Ray@uscg.mil>
Sent: Friday, November 22, 2019 9:49 AM
To: Bloch, Lauren LT <Lauren.E.Bloch@uscg.mil>
Subject: RE: [Non-DoD Source] Fwd: filming movie using flare gun on jekyll

From: laura bryant <laurabryant2009@gmail.com>
Sent: Thursday, November 21, 2019 2:03 PM
To: Ray, Chad L LT <Chad.L.Ray@uscg.mil>
Subject: [Non-DoD Source] Fwd: filming movie using flare gun on jekyll

thank you for taking my call a bit ago Lt. ray. i am forwarding you the email I sent to petty officer cavagna on tuesday. at your earliest possible convenience, if you could respond with a favorable email, i'd certainly appreciate it.

lb

----- Forwarded message -----

From: laura bryant <laurabryant2009@gmail.com>
Date: Tue, Nov 19, 2019 at 3:49 PM
Subject: filming movie using flare gun on jekyll
To: <guido.v.cavagna@uscg.mil>

afternoon petty officer cavagna,

my name is laura bryant, a location manager working on jekyll for a feature film december 9, 2019.

we are filming for one day and one of our scenes has a flare gun. this is what I requested permission from the DNR:

The Humvee turns into the entrance of the JIA Access Road heading toward the beach with the other the vehicle in close pursuit. The vehicles will turn either north or south onto the packed sand. The characters get out of the car and have a conversation. One of the characters shoots a flare from a flare gun into the sky. The flare will be shot up and toward the water. The flare will not be pointed toward the main land at any time. Company will have uniformed, off duty Georgia State Patrol with us at all times during filming. Prior to flare gun being shot, Company will have GSP notify their dispatch and any other government official necessary, i.e. BWK Police, St Simons Police and any Marine Patrol Division. GSP will give these entities a block of time this scene will need in order to complete. Company will have fire extinguishers on site at all times during this scene.

my coastal permit rep, amy flowers with the DNR, is asking:

1. I spoke with our law enforcement division about the flare gun, and he said you will need to reach out to Sector Charleston Coast Guard. We will need something in writing saying that they've given permission or that they will be submitting "local notice to mariners." Here is a number you can call: 843-740-7050.

so, will you please review my request and amy's condition and respond at your earliest convenience? if you have any questions please feel free to reach out to me via phone or my email address.

thank you for this consideration.

laura bryant

assistant location manager, *GHOST DRAFT*

--

Laura Bryant

912-667-4192 cell

PERSONAL ADDRESS:

Laura Bryant

237 Andrews Road

Savannah, GA 31410

--

Laura Bryant

912-667-4192 cell

--

Laura Bryant

912-667-4192 cell

--

Laura Bryant

912-667-4192 cell

--

Laura Bryant

912-667-4192 cell