



COASTAL RESOURCES DIVISION
ONE CONSERVATION WAY • BRUNSWICK, GA 31520 • 912.264.7218
COASTALGADNR.ORG

MARK WILLIAMS
COMMISSIONER

DOUG HAYMANS
DIRECTOR

JUN 03 2019

Michael Riley
Stalwart Productions, LLC
600 Chestlehurst Rd.
Senoia, GA 30021

Re: Letter of Permission (LOP), Film Production and Related Activities, Stalwart Films, LLC, Driftwood Beach, St. Andrews Beach, Jekyll Island Boat Ramp, Glynn County, Georgia

Dear Mr. Riley,

This Letter of Permission (LOP) is in response to your request received May 21, 2019, to film scenes for an AMC cable television show. The proposed project includes the temporary use of production equipment within the State's Shore Protection Act (SPA) and Coastal Marshlands Protection Act (CMPA) jurisdiction at Driftwood Beach, St. Andrews Beach, and at the Jekyll Island Boat Ramp on Jekyll Island, Glynn County, Georgia. Filming within the State's jurisdiction will begin no sooner than 15 days from the date of this letter and will be completed no later than July 1, 2019.

Dates:

Driftwood Beach

Prep: Tuesday June 18 to Friday June 21, 2019 between 4:00 am - 9:00 pm
Film: Friday June 21 to Sunday June 23, 2019 between 6:30 am - 9:00 pm
Strike: Sunday June 23 to Thursday June 27, 2019 between 6:30 am-9:00 pm

Jekyll Island Boat Ramp

Prep: Sunday June 23, 2019 at 5:00 pm to Monday June 24, 2019 at 06:00 am
Film: Monday June 24, 2019 between 6:30 am – 9:00 pm
Strike: Tuesday June 25, 2019 to Thursday June 27, 2019 between 6:30 am-9:00 pm

St. Andrews Beach

Prep: N/A
Film: One (1) filming day between Saturday June 22, 2019 and Monday June 24, 2019, during daylight hours
Strike: Sunday June 23, 2019 to Thursday June 27, 2019 between 6:30 am-9:00 pm

Rain Dates:

In the event of a significant bad weather forecast, the filming will be shifted. If a change is necessitated due to weather, cleanup and strike dates will be rescheduled to begin on the afternoon following completion of filming.

Location #1: Driftwood Beach

Filming at the first location will occur on soft and hard sand beach located at approximately 31°06'17.74" N, 81°24'16.41" W, and will consist of 65 cast members and 170 crew members, although not all will be present at the shooting location. A detailed location of the film and staging location can be found in the attached map. Access to the beach with equipment and crew will be via the existing Driftwood Beach access trail off Riverview Drive. There will be no encroachment into the vegetated sand dunes.

Equipment required onsite at Location #1 includes the following:

- 350-400 ft. of track mat and/or 4ft.x 8ft., ¾-inch untreated plywood will be placed along the soft sand leading to the entranceway to the beach. Additional matting or plywood will be placed where needed on the beach during filming.
- Four (4) cameras with video assist monitors, sound equipment, lighting equipment and cable
- One (1) camera drone
- One (1) 50 ft. Technocrane with diesel-powered base and all-terrain wheels for camera.
- Matting, either track mat or ¾-inch untreated plywood, will be placed beneath the crane while stationary on the beach and will remain under the crane until driven off the beach.
- Two (2) ATVs with 4ft. x 8ft. utility trailers to move film equipment from working trucks onto the beach. Matting, either track mat or ¾-inch untreated plywood, will be placed beneath the ATVs while stationary on the beach, and will remain in place until driven off the beach.
- Six (6) 10ft. x10ft. pop-up tents for crew support with folding chairs and tables, sandbags, coolers, and trash cans
- Four (4) Multiquip Glow Bug GBC light balloons on a heavy-duty cart with 1200-watt generators and red bulb filtration (will also apply to headlamps and flashlights) for pre-dawn or after-dark lighting during prep/wrap.
- One (1) 10-ton Pettibone-type lift (photos attached)
- Two (2) portable generators (photos attached)
- Assorted common construction and hand tools
- One (1) water pump

The camera view shed will encompass 360° and extend North and South, looking at the Atlantic Ocean, and along Driftwood Beach. Matting, either track mat or ¾-inch untreated plywood, will be placed beneath the crane while stationary on the beach and will remain under the crane until driven off the beach.

In order to film the scene at this location, prefabricated, painted, and fitted set-piece(s) resembling a shipwreck will be brought in and placed on the beach. The base is constructed of 2x4 lumber and plywood which sits atop a stiff but pliable polymer sheet that is then wrapped in a rubberized

JUN 03 2019

Stalwart Films, LLC- LOP

Page 3 of 5

roofing membrane. The 'shipwreck' and base will be moved onto the beach by a 10-ton Pettibone-type lift (photos attached). The lift will remain on track mat and/or 4ft. x 8ft., ¾-inch untreated plywood while within jurisdiction. The shipwreck and tub-like base set pieces will be removed using shovels and hand tools and the Pettibone-type lift. If hand tools are not enough to remove the set piece, a water pump will be used. The beach will be restored to its original topography when the filming is completed. Public access to the filming area on Driftwood Beach and on the Marsh Bike trail will be restricted for safety concerns from Friday, June 21 to Sunday, June 23, 2019. Monday June 24, 2019 will be used as a weather contingency day.

Location #2: Jekyll Island Boat Ramp

The filming at the second location will be at the Jekyll Island boat ramp and dock at approximately 31°02'31.35" N, 81°25'17.79" W, and will consist of approximately ten (10) cast members and seventy-five (75) crew members. A detailed location of the film and staging locations can be found in the attached map. Access to the boat ramp will be from S. Riverview Drive. There will be no encroachment into coastal marshlands.

Equipment required onsite at Location #2 includes the following:

- Two (2) cameras with video assist monitors, sound equipment, lighting equipment and cable
- One (1) camera drone
- One (1) 50 ft. Technocrane with diesel-powered base and all-terrain wheels
- Two (2) ATVs with 4ft. x 8ft. utility trailers to move film equipment from working trucks to set
- One (1) electric golf cart
- Six (6) 10ft. x 10ft. pop-up tents for crew support with folding chairs and tables, sand bags, coolers, and trash cans
- One (1) 1400kw generator and cable run for lighting and set support
- Four (4) Multiquip Glow Bug GBC light balloons on a heavy-duty cart with 1200-watt generators and red bulb filtration for pre-dawn lighting during prep/wrap
- One (1) four-stall restroom trailer with 3200-watt generators stationed outside of CMPA jurisdiction
- Two (2) 10ft. x 10ft. pop-up cooling tents with 1-ton portable AC unit
- Two (2) portable generators

The camera view shed will encompass up to a 360° view of the Jekyll Island boat ramp, parking lot area, the marsh area to the North and South of the boat ramp, and St. Andrews Sound.

In order to film the scene at this location, the boat ramp will be prepped with wood decking placed on the dock and gangway. The metal rails will remain in place but will be covered with fish nets. All added materials will sleeve over the existing dock structure. Any necessary attachment to the existing dock will be made by pressure fitting or clamping. No holes will be made in any existing structure. No materials will be attached to any existing structure by permanent means. Public access at the Jekyll Island Boat ramp will be restricted from 9:00 pm June 23 – 9:00 pm June 25, 2019.

Location #3: St. Andrews Beach

The filming at the third location will be on the hard and soft sand areas of St. Andrews Beach at approximately 31°01'13.66" N, 81°26'04.63" W, and will consist of approximately six to ten (6-10) crew members. A detailed location of the filming location can be found in the attached map. Access to the beach with equipment and crew will be via the existing beach crossover and at the existing sand foot path access north of the beach crossover.

Equipment required onsite at Location #3 includes the following:

- One (1) camera monitor, sound equipment
- Two (2) pop-up tents, chairs
- Four (4) director's chairs
- If needed, a small portable generator with plywood, sandbags, cooler, collapsible trash cans

The camera view shed will encompass a 360° view. Cameras will be either on a tripod or hand-held. No impact on public access is expected. No strike days or restoration plans are anticipated.

General Provisions:

The production crew will hand rake or hand sweep the beach locations to remove any debris as well as vehicle tracks and footprints from crew and talent on set.

Because the project will occur between May 1st and October 31st, sea turtle nesting season, an individual with a DNR Sea Turtle Cooperators Permit must survey the beach location areas to be used by the equipment daily, and prior to the work beginning. All sea turtle nests must be avoided, and no activity may occur within 20ft. of a nest area. No unauthorized equipment may be stored on the beach overnight.

Any lighting used on the beach locations pre-dawn and/or post-sunset must be red lighting to avoid any interference with turtle hatchlings. An individual with a DNR Sea Turtle Cooperators Permit must be onsite to monitor the beach during the pre-dawn activities.

At all vehicular access points, all production equipment will access the production location across temporary, pre-fabricated mats placed along a travel corridor that is landward of ordinary high water and seaward of the dunes. Mats will help minimize impacts to the ecosystem at the location while allowing for vehicular ingress & egress across the dry sand beach. The travel corridor will enhance public safety, protect the integrity of the dynamic dune field and existing emergent vegetation at each location.

All crew and talent will access the beach location sets via a public access dune crossover. At the end of production, all matting and equipment will be removed, and the beach will be hand raked in a manner to be consistent with the topography of the immediate surrounding area.

The Department will inspect all areas as described above during and at the termination of the temporary activities to ensure that those areas are in a condition consistent with the authorization

JUN 03 2019

Stalwart Films, LLC- LOP

Page 5 of 5

granted by this LOP. All persons must remain off the dunes and dune vegetation during setup, filming and breakdown at the approved locations. No jurisdictional vegetation is to be disturbed during approved activities. Any incidental impacts to the dunes or vegetation must be restored to pre-activity vegetated and topographic conditions as determined by the Department.

The Department authorizes the filming as depicted in the attached description. This LOP is not meant to exempt the above referenced activity from future environmental laws. **No unauthorized equipment, materials, or debris may be placed, disposed of, or stored in jurisdictional areas.** Any incidental damage or impacts associated with this project must be rectified by fully restoring areas to their pre-construction topographic and vegetative state. Damage to coastal marshlands or shore jurisdictional area will require restoration efforts to be coordinated through this office.

This LOP is valid for the above referenced project. Any change in the use, location, dimensions, or configuration of the approved project, without prior notification and approval from this office could result in the revocation of this permission and in the required removal of the materials and related structures. This project must comply with all other Federal, State, and local statutes, ordinances and regulations.

If you have any further questions or concerns regarding this or any other projects, please feel free to contact Amy Flowers at (912) 262-3109.

Sincerely,



Jill Andrews
Chief, Coastal Management Section

Enclosures: Description, Marine Event Permit
Cc: Yank Moore, JIA
File: LOP20190079

STALWART PRODUCTIONS, LLC
600 Chestlehurst Rd.
Senoia, GA 30021
678-723-0230

June 1, 2019

Ms. Amy Flowers
Coastal Permit Coordinator
Coastal Resources Division
Georgia Department of Natural Resources
1 Conservation Way
Brunswick, GA 31520

RE: Letter of Permission request from Stalwart Productions, LLC for filming on Jekyll Island Authority (JIA) properties.

Ms. Flowers:

Stalwart Productions, LLC is requesting permission to film scenes for an AMC cable series between the dates of June 18-27, 2019 on Jekyll Island at the following locations:

- Driftwood Beach (Location #1)
- Jekyll Island boat ramp/dock (Location #2)
- St. Andrews Beach (Location #3)

Filming dates would be Friday, June 21-Monday, June 24, 2019 (with June 25 as a weather contingency day).

Filming at all locations would be between 6:30 AM-9:00 PM.

Preparation dates would be Tuesday, June 18-Monday, June 24, 2019.

Restoration dates would be Sunday, June 23-Thursday, June 27, 2019.

FILMING SCHEDULE

Location # 1 - Driftwood Beach, soft and hard sand beach at approximately 31°06'17.74"N, 81°24'16.41"W

Driftwood Beach access will be at paved path off Beachview Dr. north of Villas by the Sea (see attached overhead). Track mat will be installed along the soft sand trail to the beach for equipment access. Production generator, portable toilet facilities and cooling tents will be located at the junction of the marsh bike trail and the footpath leading to the beach (see attached overhead).

We will request restricted public access to the marsh bike trail for safety concerns from Friday, June 21-Sunday, June 23, with Monday, June 24 as a weather contingency day. A sign notifying the public of the dates and times of the closure would be posted at the trail head at the north end of the island in advance of the closing (see attached overhead). The trail would be closed at the concrete bridge north of the access path to the beach. A production assistant would be posted at the bridge to inform cyclists who may not have noticed the posting about the trail closure.

All equipment that could have potential fluid spills will be placed on plywood at all times while on the beach. If any pre-dawn or after-dark crew access or work is required on the beach, approved red-filtered lighting would be in place. All equipment, sets, and personnel would keep a minimum distance of 20 feet from nesting sea turtle sites.

Scene(s) summary:

A group comprising approximately 15-20 coastal community survivors are on the beach participating in martial arts training. A shipwreck is found washed ashore with approximately 15-20 passengers on-board. As they disembark, a battle takes place between the island inhabitants and the passengers.

If time allows:

Three people, accompanied by a dog, walk along the beach and have a conversation.

Two young girls are casting sein nets in the surf along the beach.

Friday, June 21

6:30 AM-9:00 PM

We are requesting public beach access to be closed for a 3-hour period for a cast rehearsal between 9:00 AM-12:00 PM. Later in the afternoon there would be a technical scout with department heads. A still photographer would shoot some photos of the beach to be used for generating computer images. A drone camera, approximately 150 feet in the air, would film a small sail boat heading out to sea. Beach access restrictions would not be necessary for these activities.

Saturday, June 22 and Sunday, June 23

6:30 AM-9:00 AM

Requesting beach access to be closed to the public within the set area (see attached overhead). We will begin filming at first light (6:30 AM-7:00 AM), working our way towards the wrack line as the tide rises. Access to the beach with equipment and crew will be via the existing access trail off Riverview Dr. N., and there will be no encroachment through the sand dunes or marsh. Once filming is completed, any disturbed areas will be hand raked to return the beach to its natural state.

Equipment:

Inside SPA jurisdiction

350-400 ft. of track mat and/or 4'x 8', 3/4" untreated plywood will be placed along the soft sand leading to the entranceway to the beach. Additional matting or plywood will be placed where needed on the beach during filming.

4 - Cameras with video assist monitors, sound equipment, lighting equipment and cable

1 - Camera drone

1 - 50 ft. Technocrane with diesel-powered base and all-terrain wheels for camera.

The crane with the base and camera weighs approximately 7,500-8,500 lbs. Matting, either track mat or 3/4" untreated plywood, will be placed beneath the crane while stationary on the beach and will remain under the crane until driven off the beach.

4 - ATVs with 4'x 8' utility trailers to move film equipment from working trucks onto the beach. Matting, either track mat or 3/4" untreated plywood, will be placed beneath the ATVs while stationary on the beach, and will remain in place until driven off the beach.

3 - Electric golf carts

6 - 10'x10' pop-up tents for crew support with folding chairs and tables, sand bags, coolers, and trash cans. We will police the location throughout the day and remove at wrap any trash or debris created by production. No filming equipment will be left on the beach.

4 - Multiquip Glow Bug GBC light balloons on a heavy-duty cart with 1200-watt generators and red bulb filtration (will also apply to headlamps and flashlights) for pre-dawn or after-dark lighting during prep/wrap.

Outside SPA jurisdiction

1 - 1400kw generator for lighting and set support stationed off beach on the bike path landward of the tree line and SPA jurisdiction

2 - Four-stall restroom trailers with 3200-watt generators stationed off beach on the bike path landward of the tree line and SPA jurisdiction

3 - 10'x 10' pop-up cooling tents with 1-ton portable AC units, stationed off beach on the bike path landward of the tree line and SPA jurisdiction

Personnel:

56 cast members

170 crew members (not all will be present at the shooting locations)

Location #2 - Jekyll Island boat ramp/dock at approximately 31°02'31.35"N, 81°25'17.79"W

Monday, June 24

6:30 AM-9:00 PM

Requesting boat ramp to be closed to the public, 6:00 AM-9:00 PM. Filming begins at first light until completed.

The boat ramp will be accessed from S. Riverview Dr. Message boards will be placed on S. Riverview Dr. and at the entrance to the boat ramp in advance of production, indicating potential traffic delays and restricted access.

Scene(s) Summary:

The small fishing boat arrives dockside and is greeted by a welcoming committee of approximately 4 people. There are 6-10 islanders active on the dock, including 2 young girls casting sein nets into the water. A rescue boat is moored in the river channel; the rescue boat is approached by a smaller boat; the rescue boat is boarded and pulls away.

Equipment:

2 - Cameras with video assist monitors, sound equipment, lighting equipment and cable

1 - Camera drone

1 - 50 ft. Technocrane with diesel-powered base and all-terrain wheels for camera. The crane with the base and camera weighs approximately 7,500-8,500 lbs.

2 - ATVs with 4'x 8' utility trailers to move film equipment from working trucks to set

1 - Electric golf carts

6 - 10'x10' pop-up tents for crew support with folding chairs and tables, sand bags, coolers, and trash cans. We will police each filming location throughout the day and remove at wrap any trash or debris created by production.

1 - 1400kw generator and cable run for lighting and set support (see overhead).

4 - Multiquip Glow Bug GBC light balloons on a heavy-duty cart with 1200-watt generators and red bulb filtration for pre-dawn lighting during prep/wrap

1 - Four-stall restroom trailer with 3200-watt generators stationed off beach on the bike path landward of the tree line and SPA jurisdiction

2 - 10'x 10' pop-up cooling tents with 1-ton portable AC unit

2 - Portable generators

Personnel:

10 cast members
75 crew members

Location #3 - St. Andrews Beach at approximately 31°01'13.66" N, 81°26'04.63"W

Saturday, June 22-Monday, June 24

As time can be found during daylight hours

Scene(s) Summary:

A small fishing boat carrying 2-3 people is seen from the beach approaching the island.

Equipment:

1 - Camera monitor, sound equipment

2 - Pop-up tents, chairs

4 - Director's chairs

If needed, a small portable generator with plywood, sand bags, cooler, collapsible trash cans

We will police the location throughout the day and remove any trash or debris created by production. Camera, on tripod or hand-held, filming a fishing boat as it passes by on the way to the island boat ramp location. No impact on public access expected (see attached overhead).

Personnel

6-10 crew members

PREP SCHEDULE

Location #1 - Driftwood Beach

Tuesday, June 18-Friday, June 21

4:00 AM-9:00 PM daily

Tuesday, June 18

Overnight security (GSP officer) begins and continues until prep/filming/strike/restoration is complete.

2 portable toilets are delivered and placed along the bike trail outside SPA jurisdiction for construction crew and security during prep.

Tuesday, June 18-Friday, June 21

Shipwreck assembled in place on Driftwood Beach.

The set piece will have been prefabricated, painted and fitted prior to arriving at the beach. Sections of the structure will be brought onto the beach with a Pettibone lift then placed and assembled on a stable tub-like base. The base is constructed of 2x4 lumber and plywood which sits atop a stiff but pliable polymer sheet that is then wrapped in a rubberized roofing membrane. It is anticipated the assembly process will take 4 days to complete due to tide restrictions and delivery of the sections. See attached plans and documentation.

No public access restrictions to the beach during prep; however, there may be temporary delays when moving equipment and set pieces on and off the beach.

Equipment:

Inside SPA jurisdiction

- 1 - 10-ton Pettibone-type lift (photos attached)
- 2 - Portable generators (photos attached)
- Assorted common construction tools

Friday, June 21

7:00 AM-9:00 PM

The following would be placed on site, off beach.

- 1 - 1400kw generator for lighting and set support stationed off beach on the bike path landward of the tree line and SPA jurisdiction
- 2 - Four-stall restroom trailers with 3200-watt generators stationed off beach on the bike path landward of the tree line and SPA jurisdiction
- 3 - 10'x 10' pop-up cooling tents with 1-ton portable AC units, stationed off beach on the bike path landward of the tree line and SPA jurisdiction.

Electric department personnel would lay a cable run from the generator along the left edge of the soft sand trail that leads to the beach. There will be no power to the cable until filming begins on Saturday, June 22 (see attached overhead).

If any pre-dawn or after-dark crew access is required on the beach, approved red-filtered lighting would be in place. All equipment, sets, personnel will keep a minimum distance of 20 feet from nesting sea turtle sites.

Location #2 - Jekyll Island boat ramp/dock

Sunday, June 23-Tuesday, June 25

Restricted public access June 24-25.

Friday, June 21

7:00 AM-4:00 PM

1 portable toilet dropped at location for prep and construction crew.

Sunday, June 23

5:00 PM

Prep crew and overnight security arrive.

8:00 PM

Production equipment begins to arrive and will park in the large boat trailer lot (see attached overhead).

5:00 PM Sunday, June 23 - 6:00 AM Monday, June 24

Night and pre-dawn work is being requested for prep. A revised and modified set design is attached.

Metal rails will remain in place, covered with fish nets. Wood decking placed on dock and rampway. No additional floating dock pieces will be installed to extend the existing dock. All added materials will sleeve over the existing dock structure. Any necessary attachment to the existing dock will be made by pressure fitting or clamping. No holes will be made in any existing structure. No materials will be attached to any existing structure by permanent means.

If any pre-dawn or after-dark crew access is required on the beach, approved red-filtered lighting will be in place if required. All equipment, sets, personnel will keep a minimum distance of 20 feet from nesting sea turtle sites should they be within the work zone.

Location #3 - St. Andrews Beach

No prep anticipated.

STRIKE/RESTORATION SCHEDULE

Location # 1 - Driftwood Beach

Monday, June 24-Thursday, June 27

4:00 AM-9:00 PM

Removal of the shipwreck from the beach begins. No public access restrictions during strike/restoration; however, there may be temporary delays when moving equipment and set pieces on and off the beach. Restore beach surface to DNR specifications if needed.

If any pre-dawn or after-dark crew access is required on the beach, approved red-filtered lighting will be in place. All equipment, sets, personnel will keep a minimum distance of 20 feet from nesting sea turtle sites.

Location #2 - Jekyll Island boat ramp/dock

Monday, June 24-Tuesday, June 25, with Wednesday, June 26 as a weather contingency day

5:00 PM-9:00 PM; 7:00 AM-12:00 PM

Remove set design elements, dressing.

Location #3 - St. Andrews Beach

No strike/restoration anticipated.

Additional Production Equipment

Friday, June 21-Monday, June 24 with Tuesday, June 25 held as a weather contingency day

Outside SPA jurisdiction

Base Camp vehicle parking

Option # 1 Approximately 1/3 of parking lot on east side of Beachview Dr. south of Capt. Wylly Rd. See attached overhead.

Option #2 Approximately 1/3 of Jekyll Island Golf Course parking lot. Note: It would require trimming a few low hanging branches or limbs along Captain Wylly Rd. and lifting of utility lines for clearance of the taller equipment. See attached overhead.

Jody Winslet, Transportation Captain, 706-473-3187

- 9 - 53-ft. trailers plus tractors (base camp lot)
- 8 - 40-ft. cast trailers (base camp lot)
- 8 - Stakebeds (base camp and at set)
- 3 - 40-ft equipment trucks (at set)
- 1 - 30-ft. craft service trailer (at set)
- 1 - 30-ft. sound trailer (at set)
- 5 - vans (base camp and at set)
- 7 - Greyhound buses (base camp lot, 2 at set for cooling areas)
- 1 - 53-ft. landhaul trailer plus tractor (base camp lot)
- 1 - 40-ft. set dec truck (at set)
- 1 - 50-ft. crane truck and trailer (at set)
- 1 - 25 ft. catering truck/kitchen, with support box truck and van (at set)
- 1 - Lunch box catering trailer (at set)

TRAFFIC CONTROL

Traffic message boards would be placed on Beachview Dr. and Riverview Dr. in advance of production indicating dates and times of potential traffic delays and restricted access. During filming at Driftwood Beach, we are requesting a temporary lane closure for staging the production vehicles in the east lane of Beachview Dr. north and south of the entrance to Driftwood Beach (see attached overhead). Georgia State Patrol officers will assist with security and traffic control (Sgt. Black, GSP Post Commander, 912-253-0243).

MARINE EVENT

(Permit approved by DNR; copy attached)

John Arbuckle, Marine Coordinator, 310-345-2995

Friday, June 21

Fishing boat (see attached photo) arrives under its own power to Jekyll Island Marina to begin set decorations prep.

15' potter sailboat (see attached photo) is launched, mast stepped and towed to filming location off Driftwood Beach by support boat #1. Photo doubles are picked up at Jekyll Island Marina by support boat #2 and taken to sailboat off Driftwood. Marine Department crew member sets course and hides in cabin during drone shots. At completion, doubles are taken back to marina, potter is towed back and put on trailer.

Saturday, June 22

Rescue boat (see attached photo) is launched in Brunswick and towed by support boat to Jekyll Marina; prep continues on fishing boat. Support boat #2 provides lock up at Driftwood. Marine Department. provides water safety and assists set dec/construction at launch ramp.

Sunday, June 23

Rescue boat is anchored off launch ramp. Shoot dock sequence. Support/safety boats provide lock up with assistance from Glynn County Police Department (Brian Scott, 912-577-0339) will assist with water traffic control.

Monday, June 24

Wrap all picture boats. Tow rescue boat to Brunswick and haul it away. The support boats will be staffed with Marine Department captains and deck hands and there will be an ocean lifeguard on the safety boat.

HOUSING

Cast and crew will be housed at the Jekyll Island Club, Jekyll Ocean Club, Seafarer Inn & Suites, The Holiday Inn Resort and Villas by the Sea. Cast and Crew 150-225. Cast, crew and extras will be bused or driven from hotels to the sets.

All of us with Stalwart Productions, LLC will endeavor to make this a positive filming experience for the Jekyll Island community. All attachments and overheads will follow in a separate email. Should you have any further questions or concerns please contact me.

Best regards,

Michael Riley
Supervising Location Manager
Stalwart Productions, LLC
404-372-2140
jmichaelriley@gmail.com

From: Michael Riley <jmichaelriley@gmail.com>
Sent: Monday, June 3, 2019 3:03 PM
To: Flowers, Amy
Subject: Re: LOP request

CAUTION: This email originated from outside of the organization. Do not click links or open attachments unless you recognize the sender and know the content is safe.

Amy:

#1: No sand on the ramp; it should have been excluded from the OceansideDockWorkNotes
#2: The trash pump and hose would be used, if needed, to remove tracks from the beach and possibly to help in the removal of the base of the shipwreck in conjunctions with hand tool.. As described to me the pump utilizes sea water that would be forced under the structure's base so it could help alleviate an suction or adherence to the beach surface. I will see if I can find an example of such a pump.
#3We will utilize 2 ATV's and 4x8 utility trailers to bring equipment to the mouth of the access to the beach. We can turn them around and head back out to pick up additional equipment. Equipment would then need to be hand carried onto the beach.
#4Message boards Beginning the week of June 10
#5After 5:00 PM if possible to allow us to prep. However, we will work with people who need to access the dock or ramp. If we could restrict access after 9:00 PM that would be helpful if we are prepping overnight. I mentioned working through the night in the LOR is that possible?

Let me know if you need anything else. I will see if I can get a description of the trash pump to you shortly.

Thanks

On Mon, Jun 3, 2019 at 1:45 PM Flowers, Amy <amy.flowers@dnr.ga.gov> wrote:
Mr. Riley,

I have a few questions in regards to the request you submitted today (06/03/19).

1. As we understood from our in-person meeting on Friday 05/31/19, the sand component at the Jekyll Island Boat Ramp was going to be removed from this application. It isn't written or described in the LOP request, but is incorporated into a picture on the document "Oceanside DockWorkNotesForApproval REV

EC 20190601.pdf". Please explain.

2. As we understood from our 05/03/19 meeting, Stalwart Films was planning to use hand tools and a pump to help remove the 'shipwreck' out of the sand at Driftwood Beach. The pump was not mentioned in the request. If you need the pump, please provide a description of the pump and how it will be used.
3. JIA has requested a limit to the number of vehicles on the beach at Driftwood Beach. JIA would prefer that no ATV's or Golf Carts be used on the beach. Is there a way for Stalwart Films to make accommodations for this?
4. In the application, it is mentioned that message boards will be placed 'in advance'. Approximately when will these message boards be placed?
5. In the LOP request, it's mentioned that the boat ramp public access will be restricted on 06/24 and 06/25. Do you plan on restricting access during prep (06/23 5pm - 06/24 6am)?

Thank you.

Amy Flowers
Coastal Permit Coordinator
Coastal Resources Division
(912) 262-3109 | M: (912) 266-0642
Facebook • Twitter • Instagram
Buy a hunting or fishing license today!

A division of the
GEORGIA DEPARTMENT OF NATURAL RESOURCES

From: Michael Riley <jmichaelriley@gmail.com>
Sent: Monday, June 3, 2019 5:26 AM
To: Flowers, Amy <amy.flowers@dnr.ga.gov>
Cc: Noble, Josh <Josh.Noble@dnr.ga.gov>; Alexa Orndoff <aorndoff@jekyllisland.com>; Yank Moore <yomoore@jekyllisland.com>
Subject: LOP request

CAUTION: This email originated from outside of the organization. Do not click links or open attachments unless you recognize the sender and know the content is safe.

Amy:

Good morning.

Attached is Stalwart Productions, LLC LOP request. I sent the attachments and overheads by separate emails.

Let me know if you have any questions.

Best regards,

--

Michael Riley
Location Manager
jmichaelriley@gmail.com
404-372-2140

--

Michael Riley
Location Manager
jmichaelriley@gmail.com
404-372-2140

MARINE EVENT PERMIT

INSTRUCTIONS

1. Before completing this application form, a person desiring a marine event permit should read Chapter 391-4-5 of the Rules of The Department of Natural Resources governing marine events.
2. Print or type in ink to permit reproduction.
3. Applications for marine events must be received by the Boating Law Administrator at least 30 days prior to the event. Applications for water events (10,000 or more participants and spectators) must be received at least 90 days prior to the event Unless a special deadline for a restricted water is in effect. Complete and legible faxes are acceptable.
4. Attach a copy of a chart, map, or scale drawing showing boundaries and/or courses and markers contemplated.

NAME OF EVENT AMC/Stalwart Films, LLC cable television series		LOCATION OF EVENT Jekyll Island	
DATE OF EVENT June 18-26, 2019	TIME (START/FINISH) 5:00 AM-8:30 PM	ANTICIPATED NUMBER OF PARTICIPANTS 150-200	SPECTATORS 0
DESCRIPTION OF EVENT Filming scenes for cable series on Driftwood Beach, Jekyll Island Boat Ramp, St. Andrews Beach		SPONSORING ORGANIZATION (Name, Address) Stalwart Films, LLC 600 Chestlehurst Rd Senoia, GA 30276	
ALL APPLICANTS COMPLETE SECTIONS A & D			

As required by O.C.G.A. § 50-36-1, I hereby verify that I am lawfully present in the United States as follows (Place your initials in the applicable block below):

I am a United States citizen or legal permanent resident eighteen (18) years of age or older;

OR

I am a qualified alien or nonimmigrant under the federal Immigration and Nationality Act, Title 8 U.S.C., as amended; I am eighteen (18) years of age or older; and I am lawfully present in the United States. My alien number issued by the Department of Homeland Security or other federal immigration agency is: _____

SECTION A

Check appropriate box for each question:

- | | | |
|---|---|--|
| 1. Will the event attract more than 500 spectators and/or participants? | Yes <input type="checkbox"/> | No <input checked="" type="checkbox"/> |
| 2. Will the event preempt public use of the resource base? | Yes <input checked="" type="checkbox"/> | No <input type="checkbox"/> |
| 3. Will the event be publicized by paid advertising in the news media? | Yes <input type="checkbox"/> | No <input checked="" type="checkbox"/> |
| 4. Will all participants be knowledgeable, prior to the marine event, of the requirements of the Georgia Boat Safety Act? | Yes <input checked="" type="checkbox"/> | No <input type="checkbox"/> |
| 5. Has the person with management jurisdiction over the affected water body been notified of the proposed marine event? | Yes <input checked="" type="checkbox"/> | No <input type="checkbox"/> |

If questions 1-3 can be answered in the negative and if questions 4 and 5 can be answered in the affirmative, a permit exemption may be returned to the applicant.

If a permit exemption is not anticipated after responding to the foregoing statements, the applicant must:

- Complete Section B and D if fewer than 10,000 participants and spectators are anticipated.
- Complete Section B, C, and D if 10,000 or more participants and spectators are anticipated.

SECTION B

To be considered for a permit to conduct a marine event, the applicant shall complete the following:

1. Description of Vessel Construction Material:

See attached documentation

Does the sponsor agree to remove any nonbuoyant material which

Becomes detached and/or sinks during the course of a marine event? Yes No

2. If requested by the Department, can the sponsor provide:

- Sufficient solid waste containers? Yes No
- Verification that participants and sponsor-approved concessionaires
Are aware of the Georgia Litter Control Law Yes No
- Sufficient sanitary facilities? Yes No
- Recovery and disposal of sunken and floating marine event
Generated debris? Yes No
- Marine event site restoration? Yes No
- Public notice of the time and location of the marine event? Yes No
- Navigational aids? Yes No

The Department may impose any other requirements deemed reasonably necessary to prevent the degradation of the natural resources.

SECTION C



To be considered for a permit to conduct a water event (10,000 or more participants and spectators), the applicant shall submit a plan (as an attachment to this application form) which specifies how the following requirements will be met;

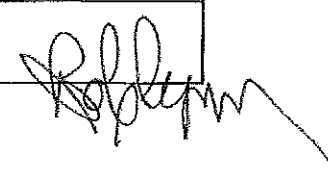
- Water event bonding in accordance with the Georgia Boat Safety Act of 1973, as amended by Georgia Laws 1981, p. 987
- Public safety
- Boating safety
- Vessel construction materials
- Schedule of activities
- Solid waste disposal
- Sanitary facilities
- Debris recovery
- Site restoration

For more detailed information about this requirement, see Rule 391-4-5-.15.

SECTION D

The undersigned has full authority to represent the sponsor and certifies that the above information is true to the best of his/her knowledge.

Signature/Organization Affiliation  SUPERVISING LOCATION MANAGER	Name/Address/Phone Number Michael Riley 600 Chestlehurst Rd. Senoia, GA 30276 404-372-2140
Mail to: Michael Riley c/o Stalwart Films, LLC 600 Chestlehurst Rd. Senoia, GA 30276	Department Use Only Date: 05/23/19 Exemption Approved <input type="checkbox"/> Denied <input type="checkbox"/> Permit Approved <input checked="" type="checkbox"/> Denied <input type="checkbox"/> Signature: 
Please provide Email Address: jmichaelriley@gmail.com	



Sailboat arrives

Set

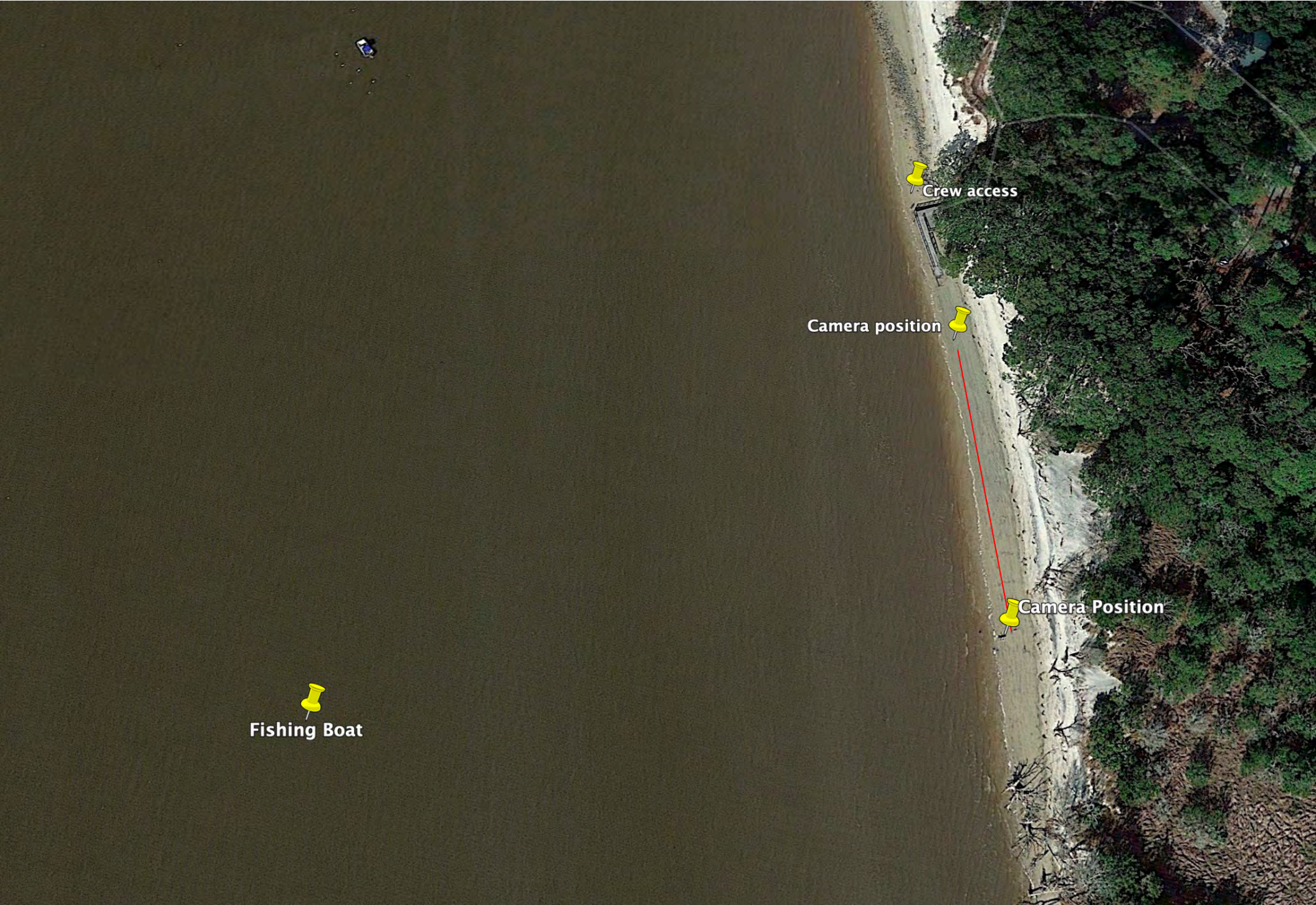
Cable run with crossovers

Generator

Equipment staged

Escape boat





Crew access

Camera position

Camera Position

Fishing Boat



Message Board Lane Closed Ahead

Riverview Dr

Close Bike Trail at bridge

GSP Officer

Equipment in East Lane

Militia training and boat washed ashore

Cable run

Generator, toilets, tents w/AC

Access Beach

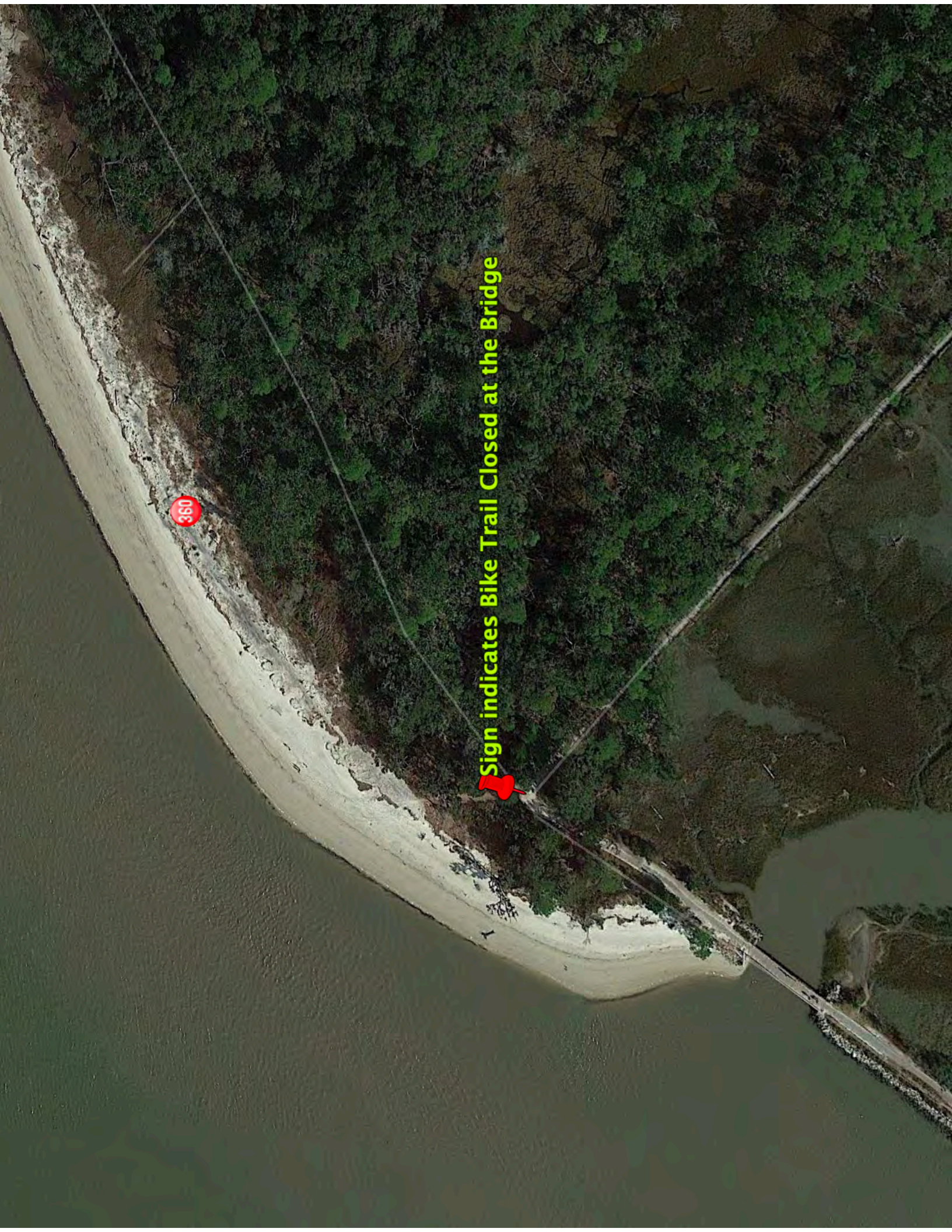
Claflin Rd

Equipment in East Lane

Catering

GSP Officer

© 2018 Google



Sign indicates Bike Trail Closed at the Bridge

360



Close Bike Trail at bridge

Militia trainin



Cable run



Generator



SHIPWRECK SET & INSTALLATION INFORMATION

SET CONSTRUCTION MATERIALS:

- SINTRA
- PINE OR SPRUCE 1X AND 2X LUMBER
- ALUMINUM COMPOSITE MATERIAL (ACM)
- STEEL
- RUBBER ROOFING MEMBRANE
- PLYWOOD

RELATED EQUIPMENT & MACHINERY:

- PROPANE GENERATOR
- GAS GENERATOR (BACKUP)
- TRASH PUMP & HOSE
- 10K FLEETONE ** NOTED ON TRANSPORTATION DEPT. LIST
- (TRACK MATS FOR TRAVELING ACROSS SAND, PLYWOOD WHERE PARKED)
- GATOR WITH TRAILER ** NOTED ON TRANSPORTATION DEPT. LIST

SHIPWRECK

LAT: 31° 6'18 N
LONG: 81° 24'17 W

PHOTO BRUSH

PHOTO BRUSH



SITE PLAN - SHIPWRECK, DRIFTWOOD BEACH

SCALE: 1" = 300' - 0"

REVISED
6/1/2019

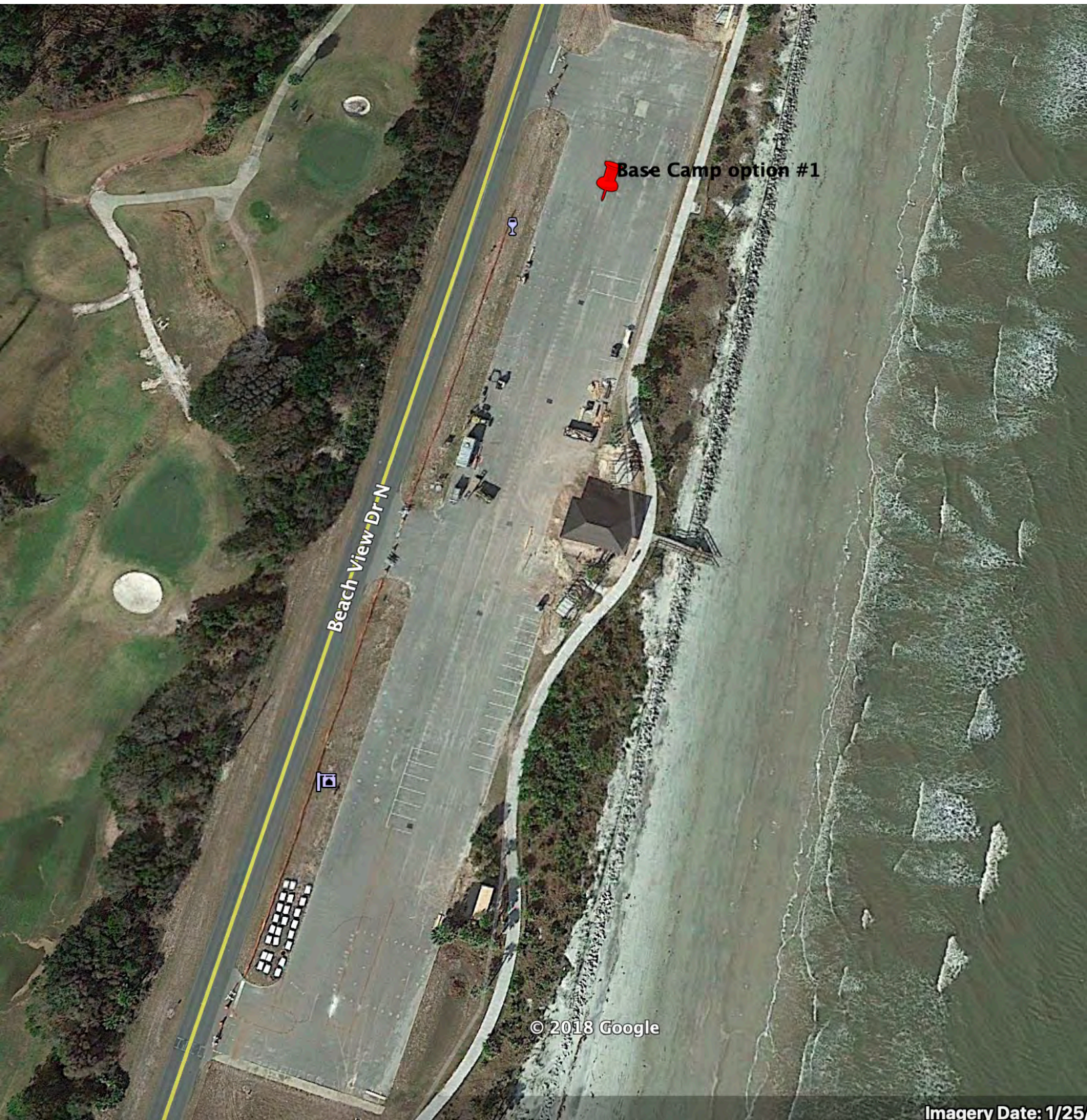
THE WALKING DEAD
SEASON 10

DIRECTOR	STALWART FILMS, LLC	1001	1 (622) 6233
PRODUCTION DESIGNER	JEFF SILVERMAN	600 ONE EIGHT SEVEN TWO	8/1/2019
ART DIRECTOR	ELIZABETH CLUMMINGS	SENOIA, GA 30176	8/1/2019
TITLE	OCEANSIDE SHIPWRECK	SCALE	1" = 300'
NOTES FOR PERMIT APPROVAL		DESIGNED BY	EC
LOCATION	JEKYLL ISLAND, DRIFTWOOD BEACH	DATE	08/01/19
		A79	
<small>1001 A79 Oceanside Shipwreck Work Notes For Approval REV EC 20190801.pdf 1001 JekyllIsland EC.vrx</small>			



Base Camp option #2





Base Camp option #1

Beach View Dr-N

© 2018 Google

Imagery Date: 1/25





672

BURKINCK, GA

672



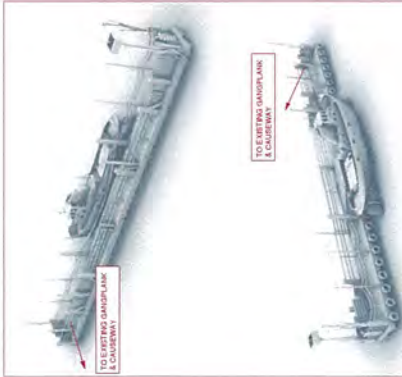
BigTex

226N

FL5376PN

FL883122

INTENSILE



PLEASE NOTE:

- THE TWO REFERENCED WITHIN THIS FRAME ARE FOR PAPER OVERSIGHT REFERENCE ONLY.
- NO ADDITIONAL TIE DOWN DOCK PIECES WILL BE INSTALLED TO EXTEND THE EXISTING DOCK.
- ANY NECESSARY ATTACHMENT TO THE EXISTING DOCK WILL BE MADE BY PRESSURE.
- NO MATERIALS WILL BE ATTACHED TO ANY EXISTING STRUCTURE.
- NO MATERIALS WILL BE ATTACHED TO ANY EXISTING STRUCTURE BY PERMANENT LEANS.

DRESSING MATERIAL TO BE INSTALLED ON EXISTING DOCK:

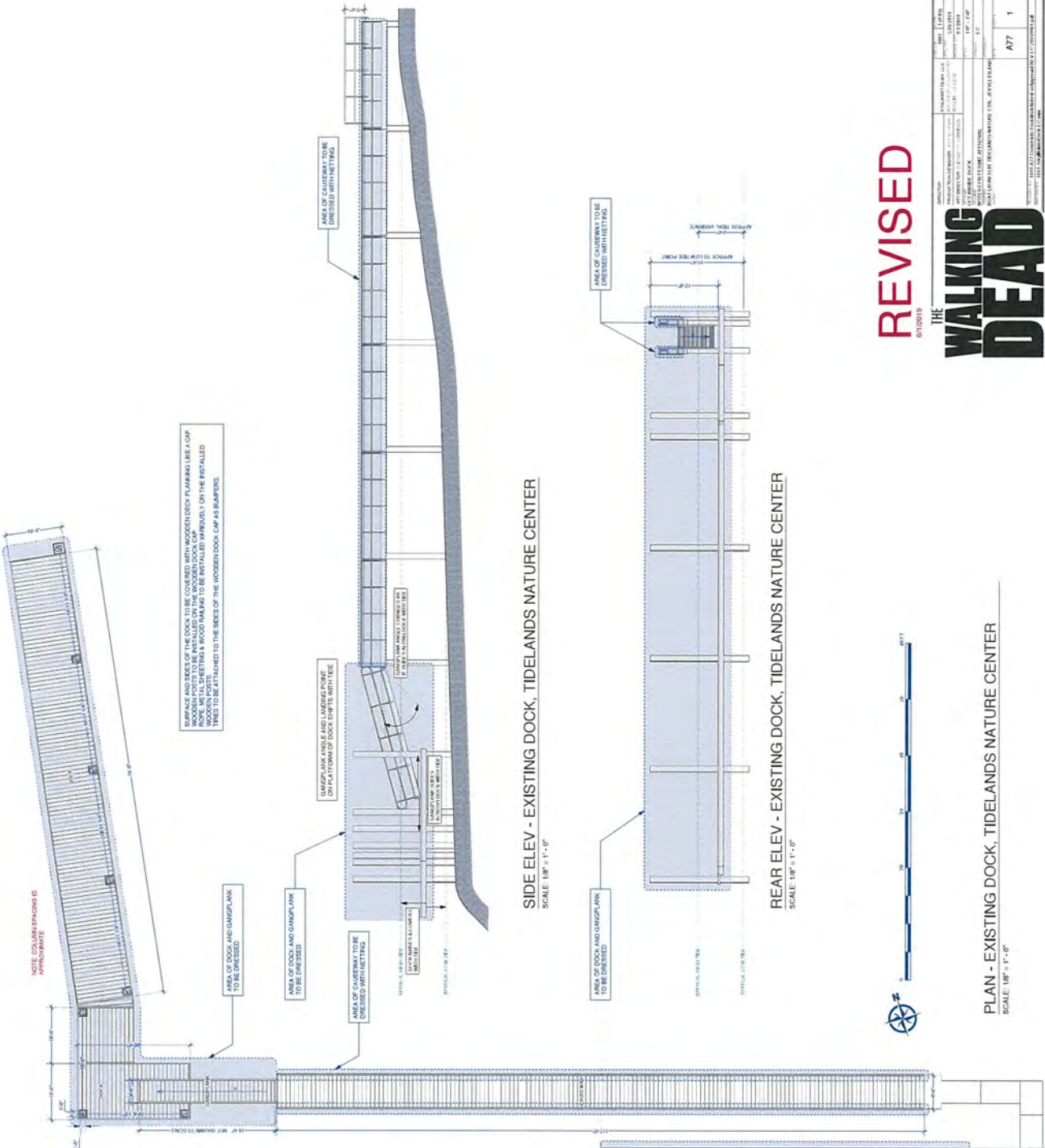
- BRACKETS
- SHEET METAL JOINTS
- TIE DOWNERS
- ALUMINUM/STEEL BRIMS/TYRON BRACKETS & FASTENERS

DRESSING MATERIAL TO BE INSTALLED ON CAUSEWAY & GANGPLANK:

- NETTING
- COTTON CANVAS GROUND COVER
- SAND (MINIMAL QUANTITY, INSTALLED ON TOP OF CANVAS GROUND COVER)

"ALL WORK SHALL BE MADE IN ACCORDANCE WITH THE FOLLOWING:

- "FROM THE START AT THE COMPLETION OF FILING."



REVISED

9/15/2019

THE WALKING DEAD

SEASON 10

DATE	10/27/2019
PROJECT	THE WALKING DEAD
LOCATION	WALKING DEAD
CLIENT	AMERICA'S GOTTA GOTTA
ARCHITECT	THE WALKING DEAD
DESIGNER	THE WALKING DEAD
SCALE	1/8\"/>
<p>FOR THE ARCHITECT: THE WALKING DEAD, 1000 W. BROADWAY, SUITE 1000, NEW YORK, NY 10013</p> <p>FOR THE CLIENT: AMERICA'S GOTTA GOTTA, 1000 W. BROADWAY, SUITE 1000, NEW YORK, NY 10013</p>	
NO. OF SHEETS	A77
TOTAL NO. OF SHEETS	1

PLAN - EXISTING DOCK, TIDELANDS NATURE CENTER

SCALE: 1/8" = 1'-0"

REAR ELEV - EXISTING DOCK, TIDELANDS NATURE CENTER

SCALE: 1/8" = 1'-0"

SIDE ELEV - EXISTING DOCK, TIDELANDS NATURE CENTER

SCALE: 1/8" = 1'-0"



6 ½' Wide

15' long

2' Column Lift

8'2" Top height

6Klbs - Taurus Base Weight

4X4

Hydraulic leveling column



Generator, toilets, tents w/AC

© 2018 Google



By continuing to browse this website, you are agreeing to our use of cookies. For more information about our use of cookies, please visit our Terms page.

742

JLG® Telehandler

I accept



Key Specs

- **Maximum Lift Capacity:** 7000 lb / 3175.15 kg
- **Maximum Lift Height:** 42 ft / 12.8 m
- **Maximum Reach:** 29 ft 1 in. / 8.86 m

Performance

Drawbar Pull	19000 lb / 8618.26 kg
Lift Capacity at Full Height	6000 lb / 2721.55 kg
Lift Capacity at Max Reach	1000 lb / 453.59 kg
Load Center	50 ft / 15.24 m
Maximum Lift Capacity	7000 lb / 3175.15 kg
Maximum Lift Height	42 ft / 12.8 m
Maximum Reach	29 ft 1 in. / 8.86 m
Outriggers or Stabilizers	No

Outside Turning Radius	12 ft / 3.66 m
Speed - Maximum Lift	11.3 sec.
Speed - Maximum Lower	9 sec.
Speed - Maximum Telescope In	11.5 sec.
Speed - Maximum Telescope Out	11 sec.
Speed - Maximum Travel	18 mph / 28.97 km/h

Dimensional Data

Ground Clearance	1 ft 5 in. / 0.43 m
Machine Height	8 ft / 2.44 m
Machine Length	23 ft 1 in. / 7.04 m
Machine Width	8 ft 1 in. / 2.46 m
Tire Size	370/75-28
Wheelbase	11 ft 3 in. / 3.43 m

Power Source

Capacity - Fuel Tank	38.3 gal. / 144.98 L
Engine Horsepower	74 hp / 55.20 kW
Engine Manufacturer	Cummins
Engine Model	QSF 3.8L Tier 4 Final
Maximum Engine RPM	2500 rpm

General

Axle-Front	High Bias, Limited Slip
Axle-Rear	Oscillating
Function Pump Type	Load Sensing Piston
Operating Vehicle Weight	21476 lb / 9741.35 kg
Service Brake Type	Wet Multi-Disc
Transmission - Nr Forward Gears Standard	4
Transmission - Nr Reverse Gears	3
Transmission Type	Powershift

Key Features

- Enhanced operator comfort—spacious cab, intuitive single joystick and integrated arm rest

- Maximum serviceability— extended service intervals, easy-to-access parts and durable components for less overall maintenance
- Greater operator confidence— better visibility, Stabil-Trak rear axle stabilization, precision gravity lowering system, optional reverse sensing system and reversing camera
- 74 hp engine doesn't require Diesel Exhaust Fluid (DEF) and meets Tier 4 Final regulations
- Increased versatility—wide range of attachment options

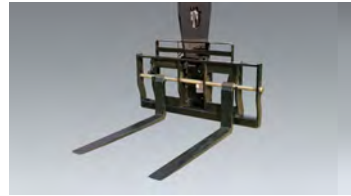
Attachments



Standard Carriage



Side-Tilt Carriage



Swing Carriage



Dual Fork Positioning Carriage



Side-Shift Carriage



Tower



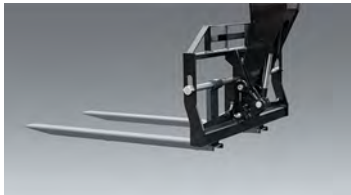
Pallet Forks



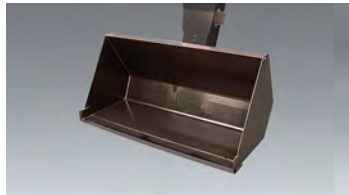
Lumber Forks



Cubing Forks



Fork Extensions



Material Buckets



Grapple Buckets



Fork-Mounted Work Platform



Coupler-Mounted Lifting Hook



Material Handling Arm



Trash Hopper



Sweeper



Fork-Mounted Extendable Truss

Literature

742-Telehandler-
SpecSheet

JLG Telehandler Family
Brochure

Telehandler Attachment
Guide

Manuals

JLG Telehandler Video



TeleMaster™ Telehandler Tires



Telemaster telehandler tires offer a comfortable ride and longer service life. These solid, flat-proof tires are available as an option on select JLG® and SkyTrak® telehandlers.

[See Details](#)

Understanding DEF

Learn how DEF, SCR and DOC impact you.

Stay Connected

Subscribe to our E-news

Tour the JLG Telehandlers



Trash Hopper Attachment



[Home](#) > [Equipment](#) > [Telehandlers](#) > [JLG Telehandlers](#) > [742](#)

[Global Home](#) | [Site Map](#) | [Terms of Use](#) | [Privacy Policy](#)

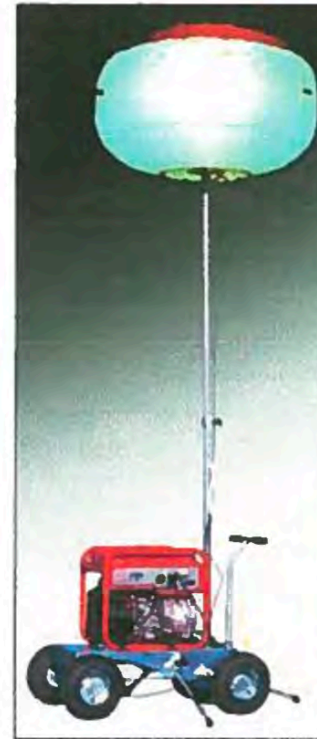
Copyright © 2019 JLG Industries

JLG Industries, Inc. is the world's leading designer, manufacturer and marketer of access equipment. The Company's diverse product portfolio includes leading brands such as JLG® aerial work platforms; JLG, SkyTrak® and Lull® telehandlers; and an array of complementary accessories that increase the versatility and efficiency of these products. JLG is an Oshkosh Corporation Company [NYSE: OSK].



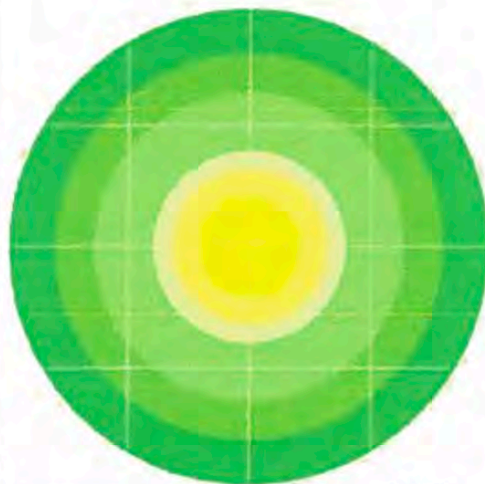
An Oshkosh Corporation Company

- 360° glare-free diffused lighting
- Integrated electric ballast inside lamp housing
- Perfect elliptical balloon shape
- Balloon is washable and repairable
- Quick, and easy set-up and transportation
- Rugged roll cage supports and protects lamps
- High quality collapsible air-shock masts
- GBC steel cart with (3) outriggers and brakes
- GloBug units easily store in ready-carry vinyl cases
- Units operate in inclement weather conditions
- Meets DOT diffused lighting specifications



Model	GBC
Voltage (V)	120
Current (A)	9.3A @ 120V
Hertz (Hz)	50-60
Lamp (1)	1kW Metal Halide
Lumens	107,000
Balloon	47" x 28"
Mast	3-Stage
Cart	Steel, zinc plated with (3) outriggers and brake
Total Height	10.6'
Total Weight	127 lbs.
Min. Generator	1,200 Watts
Wind Limits	25 MPH

Light plot - GB12GBW



Grid = 20'

Footcandle	10	5	2	1	0.5	0.25
Diameter (Ft)	17.1	25.6	34.8	51.2	63.6	78.7

Light plot - GBC & GBW



Grid = 20'

Footcandle	10	5	2	1	0.5	0.25
Diameter (Ft)	32	40	64	74	106	146



Features**Specs****Accessories****Applications****Manuals****Reviews**

Engine

Honda GX390 EFI

Displacement

389cc

AC Output

120/240V 7000W max. (58.3/29.1A) 5500W rated (45.8/22.9A)

Receptacles

20A 125V GFCI Duplex (2), 30A 125V Locking Plug, 30A 125/250V Locking Plug

DC Output

N/A

Starting System

Recoil, electric

Fuel Tank Capacity

5.1 gal.

Run Time per Tankful

6.5 hrs.@ rated load, 18.0 hrs. @ 1/4 load

Dimensions (L x W x H)

33.4" x 27.6" x 28.4"

Noise Level

58 dB(A) @ rated load, 52 dB(A) @ 1/4 load

Dry Weight

261 lbs.

Residential Warranty

3 Years

Commercial Warranty

3 Years

EU7000iS

(EU7000iSAT1)

FEATURES

- 7000 watts, 120/240V
- Perfect for home back up power, RVs, outdoor events, and more
- Super quiet
- Fuel efficient - runs up to 18 hours on 5.1 gal of fuel
- Convenient electric start
- Inverter - stable power for computers and more
- Fuel injected - better fuel efficiency and lower maintenance

MSRP

\$4959.95*



(147 reviews)

[Write a Review](#)



489

[Compare Models](#)

*Manufacturer's suggested retail price. Price excludes applicable taxes.
Dealer sets actual selling price.

[For full warranty details click here.](#)



Hover over image to zoom in



zoom

