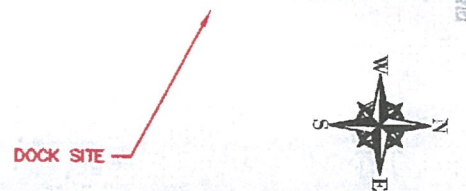


RECEIVED
 DEC 05 19
 GA-DNR



T. R. Long Engineering, P.C.
 114 North Commerce Street
 Hinesville, Georgia 31313
 (912) 368-5664
 (912) 368-7206 Fax

Proposed Dock Improvements
 for Little Cumberland Island
 Homes Association

Sheet Name: County Level Vicinity Map
 Sheet Number: C-01
 Initial Date: 08/27/2018
 Drawn By: AGW
 Project Number: 2018-126



DOVER BLUFF IS LOCATED TO THE NORTHWEST



WOODBINE IS LOCATED TO THE WEST

DOCK SITE
N35° 57' 01.47", W81° 25' 16.25"

Shellbine GRAPHIC SCALE



(IN FEET)
1 inch = 5,000'



© 2018 Microsoft Corporation. © 2018 DigitalGlobe. © CNES (2018) Distribution Airbus DS. © 2018 HERE

T. R. Long Engineering, P.C.
114 North Commerce Street
Hinesville, Georgia 31313
(912) 368-5664
(912) 368-7206 Fax

Proposed Dock Improvements
for Little Cumberland Island
Homes Association

Sheet Name: Vicinity Map
Sheet Number: C-02
Initial Date: 08/25/2018
Drawn By: AGW
Project Number: 2018-126

RECEIVED
DEC 05 18

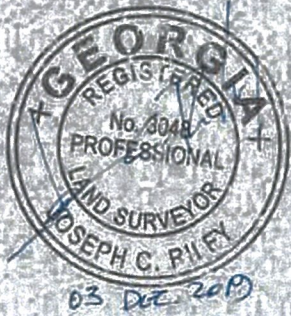


CUMBERLAND RIVER

Shell Creek

DOCK SITE

CUMBERLAND ISLAND



(IN FEET)

1 inch = 1,000 feet

2019 DigitalGlobe ©CNES (2019) Distribution Airbus DS © 2019 HERE

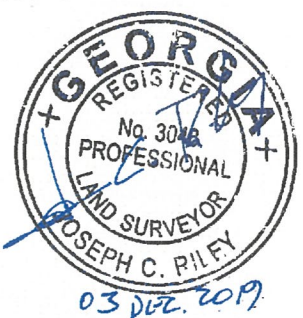
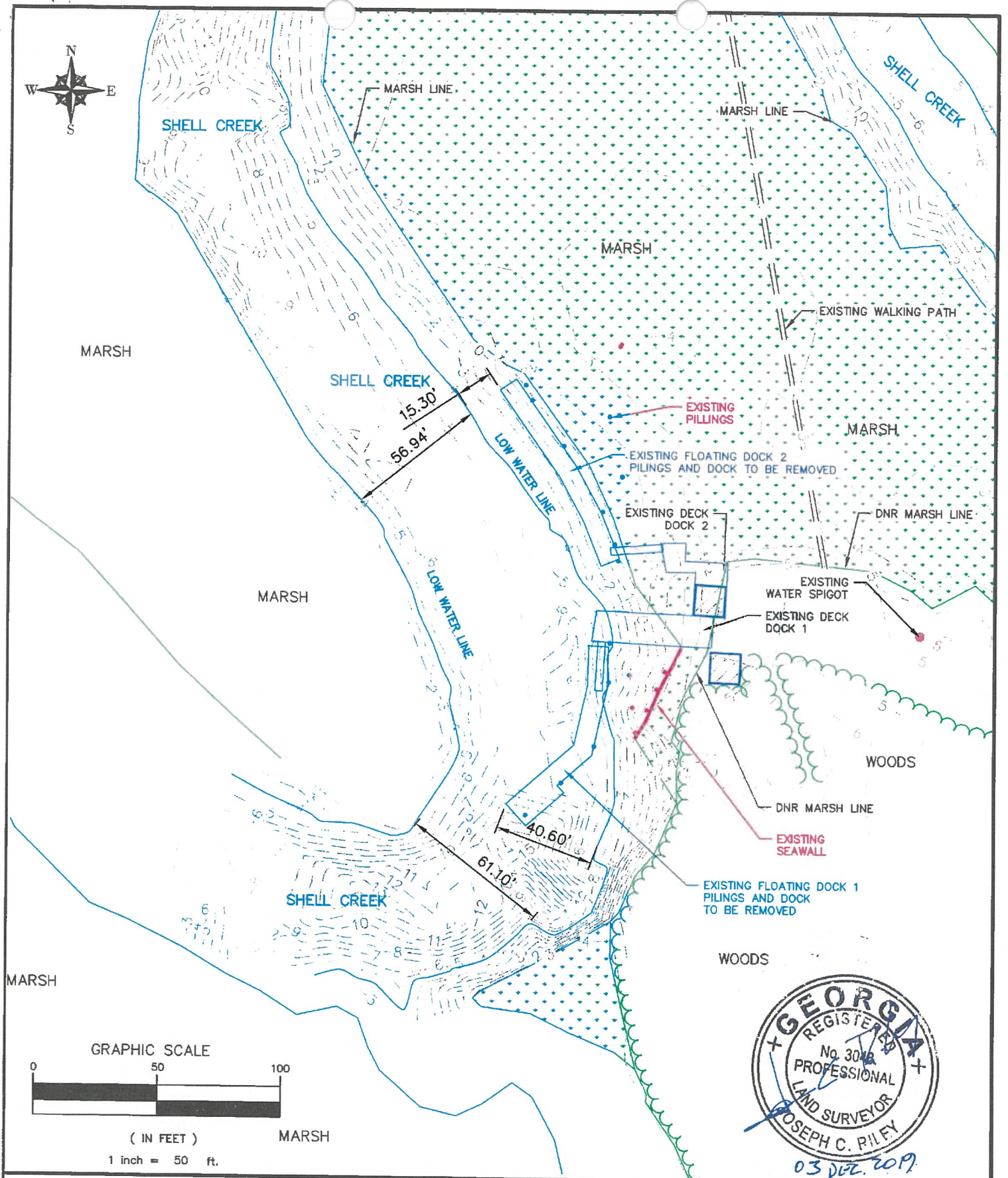
T. R. Long Engineering, P.C.
114 North Commerce Street
Hinesville, Georgia 31313
(912) 368-5664
(912) 368-7206 Fax

Proposed Dock Improvements
for Little Cumberland Island
Homes Association

Sheet Name: Vicinity Map Enlarged
Sheet Number: C-03
Initial Date: 08/25/2018
Drawn By: AGW
Project Number: 2018-126

RECEIVED

DEC 05 19

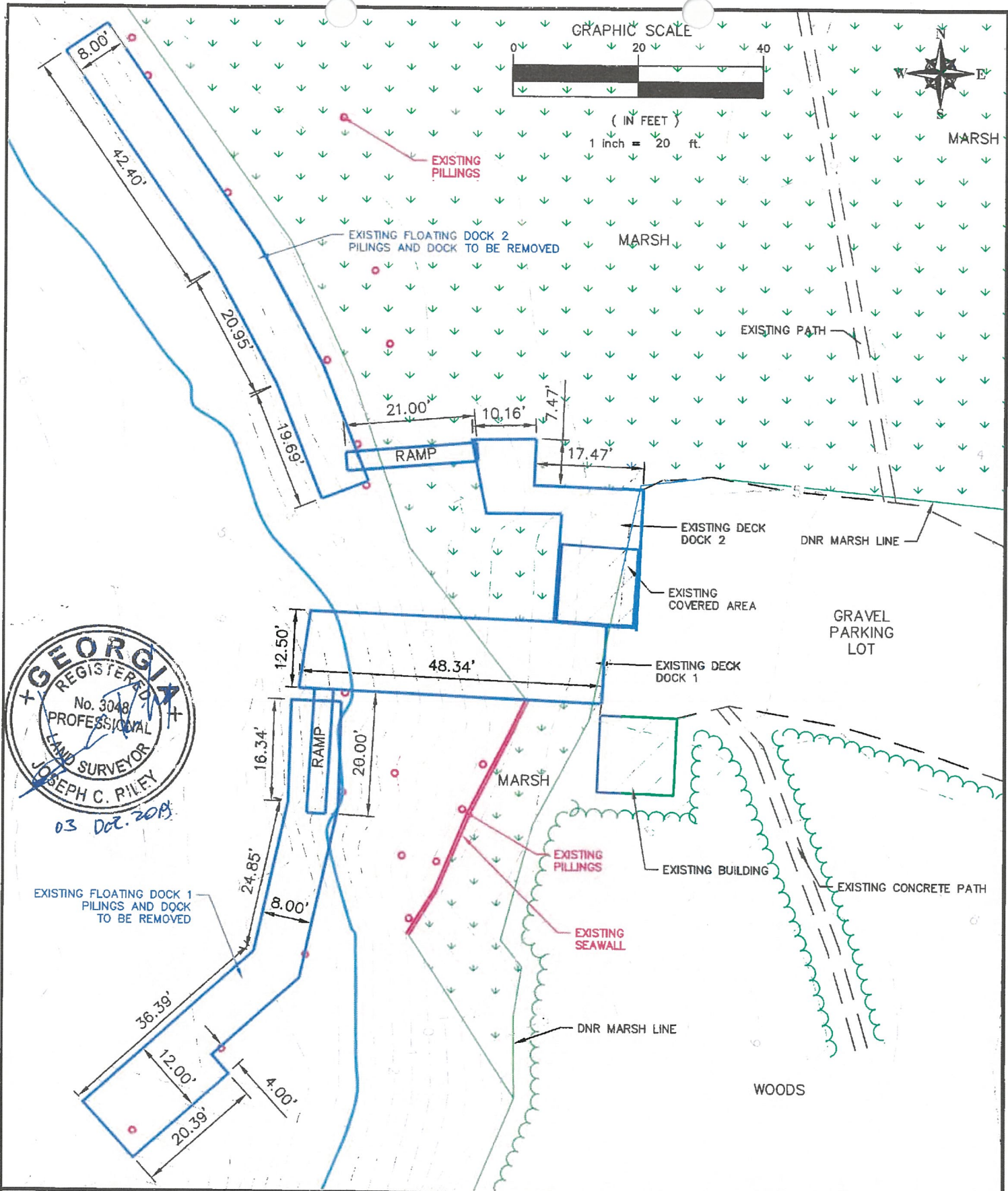


T. R. Long Engineering, P.C.
 114 North Commerce Street
 Hinesville, Georgia 31313
 (912) 368-5664
 (912) 368-7206 Fax

**Proposed Dock Improvements
 for Little Cumberland Island
 Homes Association**

Sheet Name: Existing Conditions
 Sheet Number: C-04
 Initial Date: 08/25/2018
 Drawn By: AGW
 Project Number: 2018-126

RECEIVED
 DEC 05 19



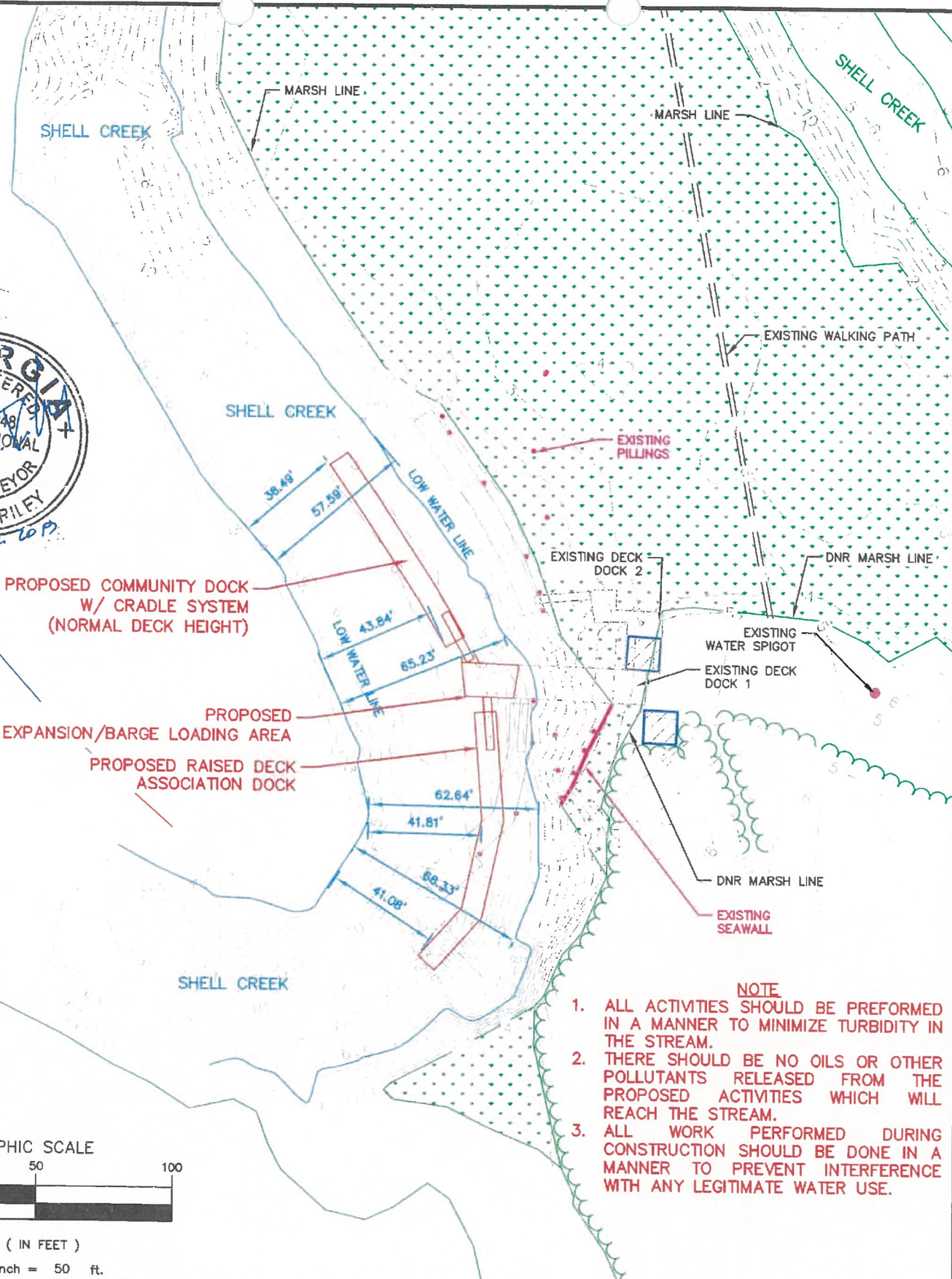
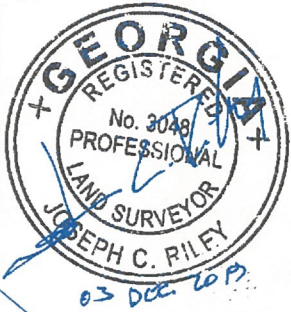
T. R. Long Engineering, P.C.
 114 North Commerce Street
 Hinesville, Georgia 31313
 (912) 368-5664
 (912) 368-7206 Fax

Proposed Dock Improvements
 for Little Cumberland Island
 Homes Association

Sheet Name: Existing Conditions Enlarged
 Sheet Number: C-05
 Initial Date: 08/25/2018
 Drawn By: AGW
 Project Number: 2018-126

RECEIVED

DEC 05 19



PROPOSED COMMUNITY DOCK
W/ CRADLE SYSTEM
(NORMAL DECK HEIGHT)

PROPOSED
EXPANSION/BARGE LOADING AREA

PROPOSED RAISED DECK
ASSOCIATION DOCK

EXISTING PILLINGS

EXISTING DECK DOCK 2

EXISTING WATER SPIGOT

EXISTING DECK DOCK 1

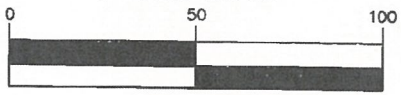
DNR MARSH LINE

EXISTING SEAWALL

NOTE

1. ALL ACTIVITIES SHOULD BE PREFORMED IN A MANNER TO MINIMIZE TURBIDITY IN THE STREAM.
2. THERE SHOULD BE NO OILS OR OTHER POLLUTANTS RELEASED FROM THE PROPOSED ACTIVITIES WHICH WILL REACH THE STREAM.
3. ALL WORK PERFORMED DURING CONSTRUCTION SHOULD BE DONE IN A MANNER TO PREVENT INTERFERENCE WITH ANY LEGITIMATE WATER USE.

GRAPHIC SCALE



(IN FEET)

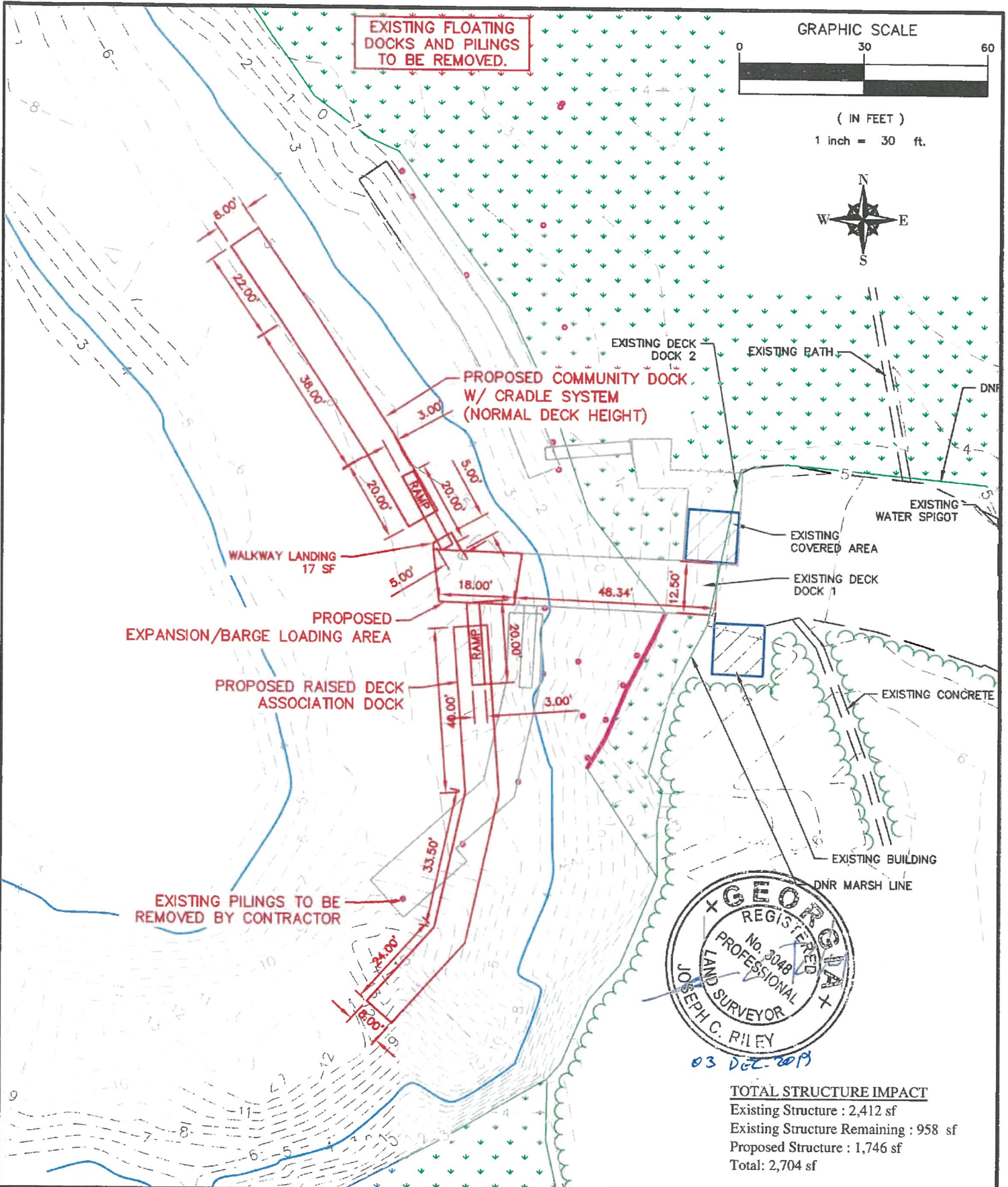
1 inch = 50 ft.

T. R. Long Engineering, P.C.
 114 North Commerce Street
 Hinesville, Georgia 31313
 (912) 368-5664
 (912) 368-7206 Fax

Proposed Dock Improvements
 for Little Cumberland Island
 Homes Association

Sheet Name: Proposed Conditions
 Sheet Number: C-06
 Initial Date: 08/25/2018
 Drawn By: AGW
 Project Number: 2018-126

RECEIVED
 DEC 05 19



TOTAL STRUCTURE IMPACT
 Existing Structure : 2,412 sf
 Existing Structure Remaining : 958 sf
 Proposed Structure : 1,746 sf
 Total: 2,704 sf

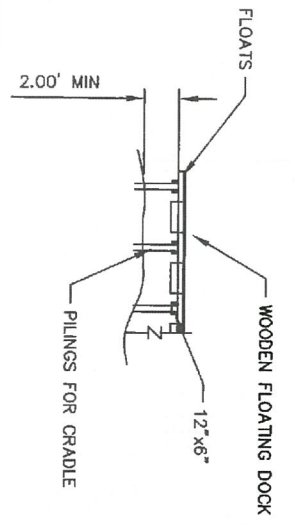
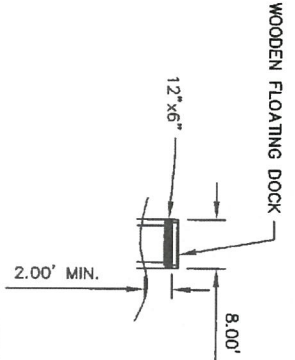
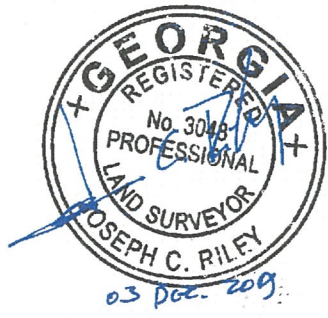
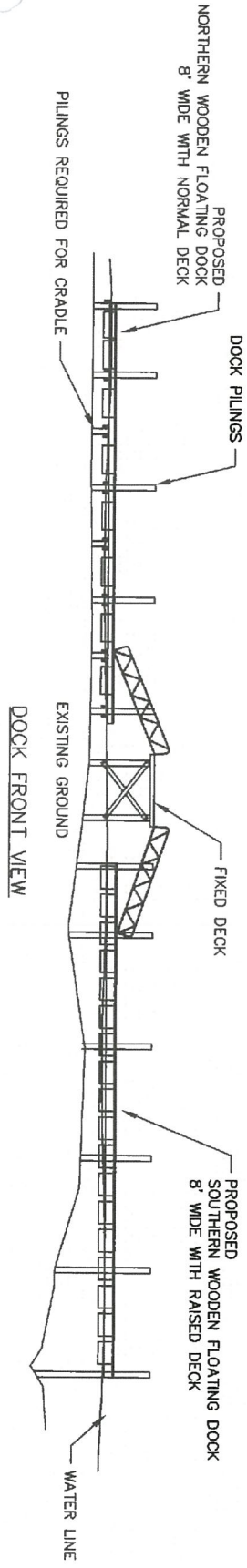
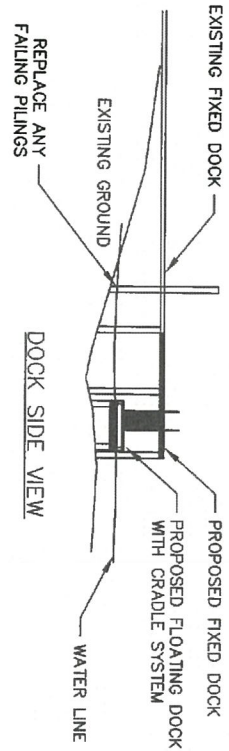
T. R. Long Engineering, P.C.
 114 North Commerce Street
 Hinesville, Georgia 31313
 (912) 368-5664
 (912) 368-7206 Fax

**Proposed Dock Improvements
 for Little Cumberland Island
 Homes Association**

Sheet Name: Proposed Conditions Enlarged
 Sheet Number: C-07
 Initial Date: 08/25/2018
 Drawn By: AGW
 Project Number: 2018-126

RECEIVED

DEC 05 19



T. R. Long Engineering, P.C.
 114 North Commerce Street
 Hinesville, Georgia 31313
 (912) 368-5664
 (912) 368-7206 Fax

Proposed Dock Improvements
 for Little Cumberland Island
 Homes Association

Sheet Name: Dock Plan and Profile
 Sheet Number: C-08
 Initial Date: 08/25/2018
 Drawn By: AGW
 Project Number: 2018-126

RECEIVED
 DEC 05 18