

West Point WMA

Heard and Troup Counties

For More Information,
Contact 706-295-6041

WMA Boundary
— WMA Boundary

Infrastructure

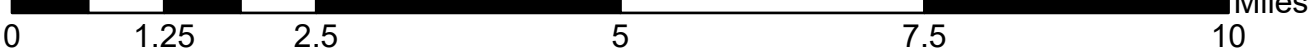
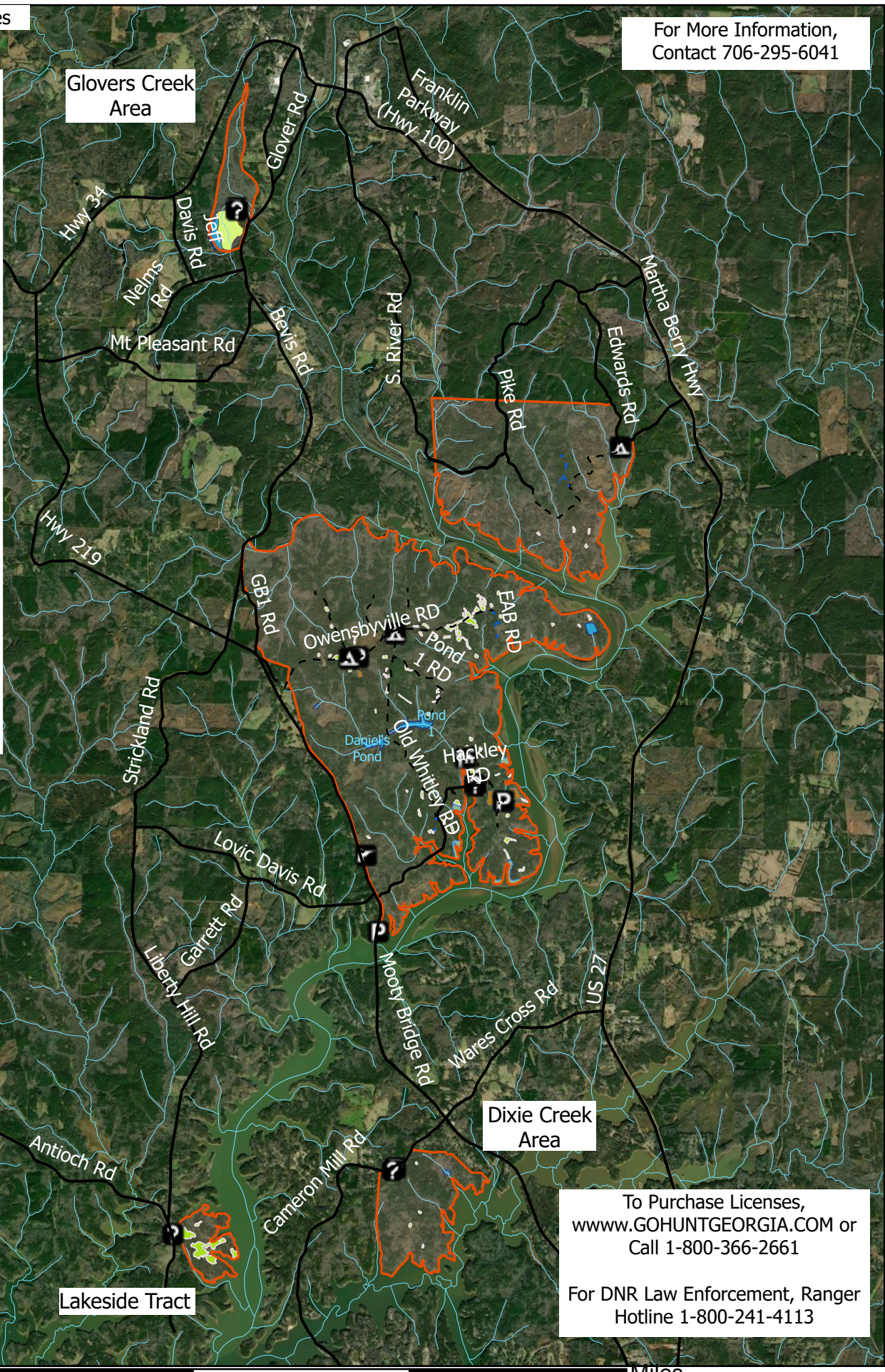
- 📍 Check Station
- ❓ Information Kiosk
- 🏹 Shooting Range

Roads

- Mobility Impaired
- Open
- - - Seasonal
- <all other values>

Designated_Areas

- 🌿 Goose Grazing Area
- 🟡 Marsh
- ⬜ Other
- 🟠 Dove Fields
- 🟢 Openings
- 🟦 Waterbody



To Purchase Licenses,
www.GOHUNTGEORGIA.COM or
Call 1-800-366-2661

For DNR Law Enforcement, Ranger
Hotline 1-800-241-4113