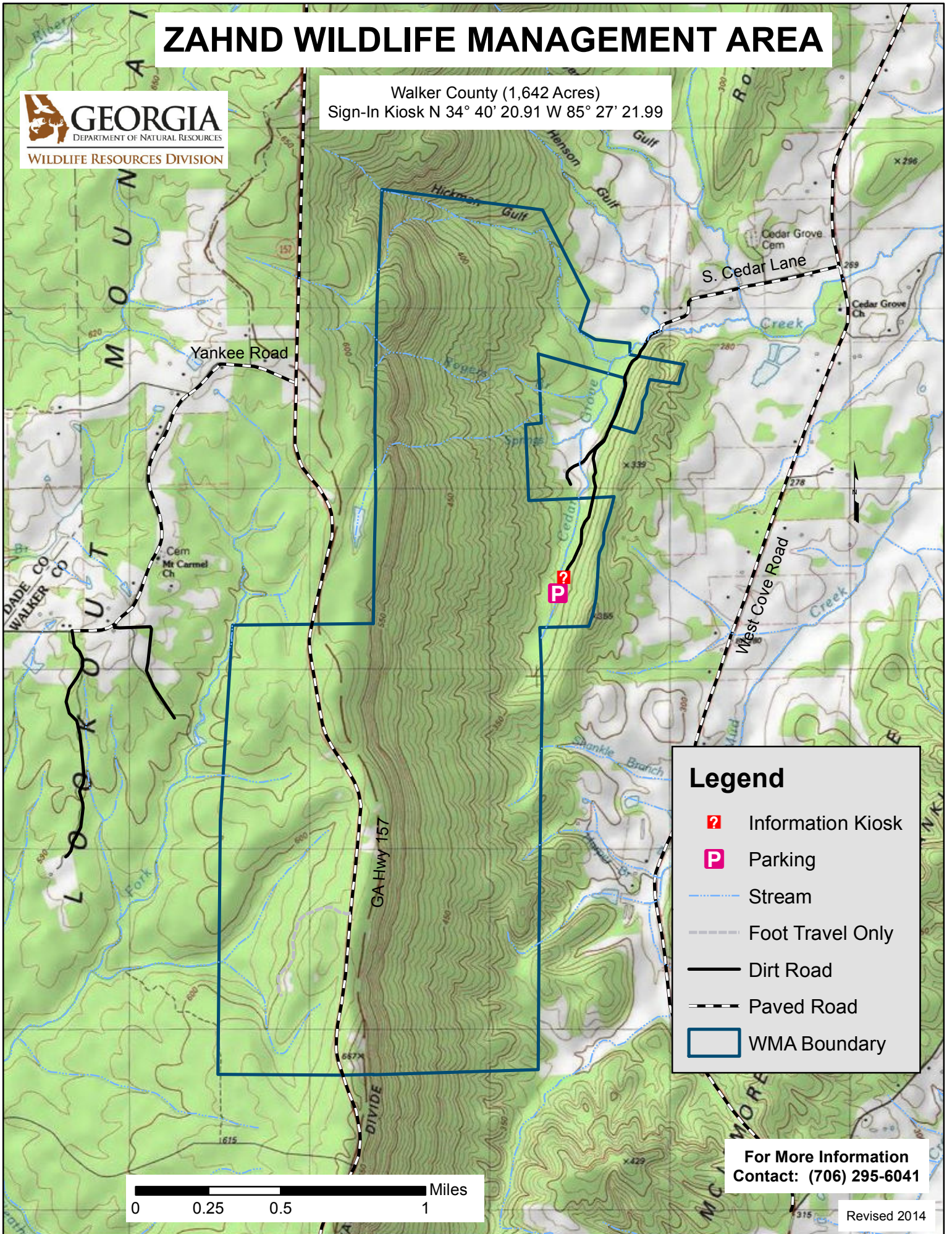


ZAHND WILDLIFE MANAGEMENT AREA



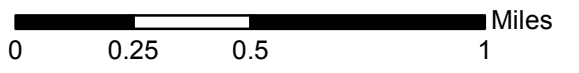
Walker County (1,642 Acres)
Sign-In Kiosk N 34° 40' 20.91 W 85° 27' 21.99



Legend

- Information Kiosk
- Parking
- Stream
- Foot Travel Only
- Dirt Road
- Paved Road
- WMA Boundary

For More Information
Contact: (706) 295-6041



Revised 2014