



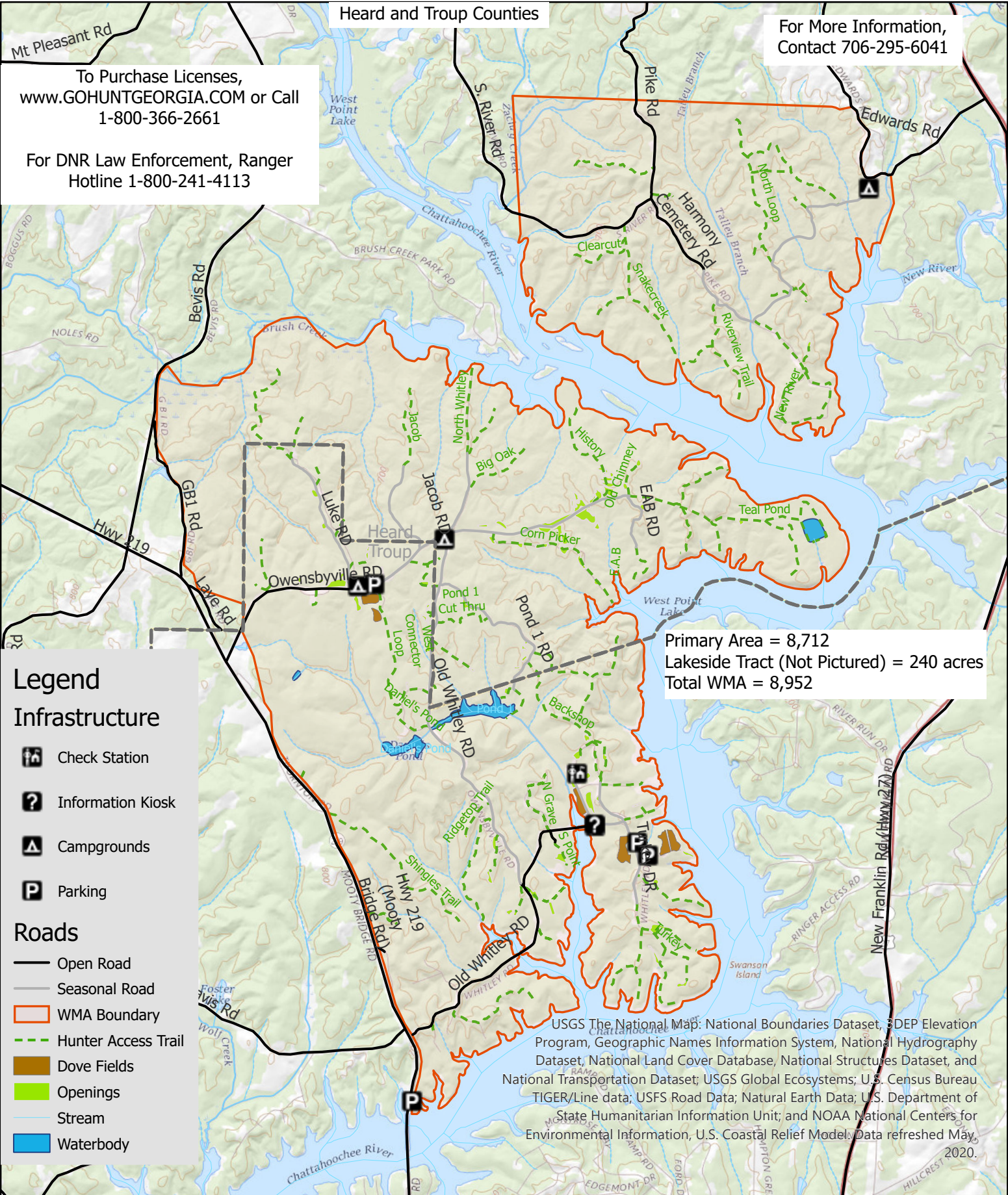
West Point WMA

Heard and Troup Counties

For More Information,
Contact 706-295-6041

To Purchase Licenses,
www.GOHUNTGEORGIA.COM or Call
1-800-366-2661

For DNR Law Enforcement, Ranger
Hotline 1-800-241-4113



Primary Area = 8,712
Lakeside Tract (Not Pictured) = 240 acres
Total WMA = 8,952

Legend

Infrastructure

- Check Station
- Information Kiosk
- Campgrounds
- Parking

Roads

- Open Road
- Seasonal Road
- WMA Boundary
- Hunter Access Trail
- Dove Fields
- Openings
- Stream
- Waterbody

USGS The National Map: National Boundaries Dataset, 3DEP Elevation Program, Geographic Names Information System, National Hydrography Dataset, National Land Cover Database, National Structures Dataset, and National Transportation Dataset; USGS Global Ecosystems; U.S. Census Bureau TIGER/Line data; USFS Road Data; Natural Earth Data; U.S. Department of State Humanitarian Information Unit; and NOAA National Centers for Environmental Information, U.S. Coastal Relief Model. Data refreshed May, 2020.

